

**Niche partitioning between invasive and native corixids
(Hemiptera, Corixidae) in south-west Spain**

Author

Coccia, Cristina, Fry, Brian, Ramirez, Francisco, Boyero, Luz, Bunn, Stuart E, Diz-Salgado, Carmen, Walton, Mark, Le Vay, Lewis, Green, Andy J

Published

2016

Journal Title

Aquatic Sciences

Version

Accepted Manuscript (AM)

DOI

[10.1007/s00027-016-0469-0](https://doi.org/10.1007/s00027-016-0469-0)

Rights statement

© 2016 Birkhäuser Verlag, Basel/Switzerland. This is an electronic version of an article published in Aquatic Sciences Volume 78, Issue 4, Pages 779-791, 2016. Aquatic Sciences is available online at: <http://link.springer.com/> with the open URL of your article.

Downloaded from

<http://hdl.handle.net/10072/142948>

Griffith Research Online

<https://research-repository.griffith.edu.au>

Aquatic Sciences

Niche partitioning between invasive and native corixids (Hemiptera, Corixidae) in south-west Spain --Manuscript Draft--

Manuscript Number:	AQSC-D-15-00119R3	
Full Title:	Niche partitioning between invasive and native corixids (Hemiptera, Corixidae) in south-west Spain	
Article Type:	Research Article	
Keywords:	Invasive species, Corixidae, Trichocorixa, Sigara, Stable isotopes, Niche partitioning	
Corresponding Author:	Cristina Coccia Doñana Biological Station-CSIC Sevilla, SPAIN	
Corresponding Author Secondary Information:		
Corresponding Author's Institution:	Doñana Biological Station-CSIC	
Corresponding Author's Secondary Institution:		
First Author:	Cristina Coccia	
First Author Secondary Information:		
Order of Authors:	Cristina Coccia	
	Brian Fry	
	Francisco Ramírez	
	Luz Boyero	
	Stuart Bunn	
	Carmen Diz-Salgado	
	Mark Walton	
	Lewis Le Vay	
	Andy Green	
Order of Authors Secondary Information:		
Funding Information:	Consejería Economía, Innovación, Ciencia y Empleo, Junta de Andalucía (P10- RNM-6262)	Andy Green
	Consejo Superior de Investigaciones Científicas	Mrs. Cristina Coccia
Abstract:	<p>Trichocorixa verticalis verticalis, a North American water boatman, is the only alien corixid in European fresh waters. It has rapidly spread, becoming the dominant corixid in and around the Doñana protected area in SW Spain. Its high abundance and similar morphology to native corixids suggest that T. verticalis may impact them through competition for food. Here we used stable isotopes of nitrogen (N) and carbon (C) and Bayesian analytical tools to investigate niche partitioning between T. verticalis and the native water boatman Sigara lateralis and S. scripta through a combination of experimental and field data. Species sampled from permanent ponds and laboratory aquaria could be separated based on their isotopic values ($\delta^{15}\text{N}$ and $\delta^{13}\text{C}$). S. lateralis consistently showed higher $\delta^{15}\text{N}$ values than T. verticalis, suggesting that the invasive species may be feeding at a lower trophic position and relying more on herbivory than its native competitors. This was particularly true for the T. verticalis nymph stage, which showed lower $\delta^{15}\text{N}$ values compared to adults, indicating ontogenetic dietary shifts. In contrast, native corixids and the invasive species showed similar isotopic compositions in temporary habitats at different stages in the flooding-</p>	

	<p>desiccation cycle, suggesting some degree of niche overlap and a slight reduction in trophic level for <i>S. lateralis</i> when inhabiting ephemeral systems. The combination of experimental and field data can help elucidate trophic interactions during a biological invasion. Stable isotopes provided insights into the trophic ecology of this invasive species and into the mechanisms facilitating co-existence with native species.</p>
Response to Reviewers:	<p>Dear Dr. Ramasubramaniam,</p> <p>Thank you very much for finding our ms AQSC-D-15-00119 provisionally suitable for publication in Aquatic Sciences once we have addressed the Editor-in-Chief comments. In the new version the word corrections suggested by the EIC have been taken into account. Please find attached the clean version of our manuscript. The answer to the EIC is detailed below:</p> <p>RESPONSES TO EIC' COMMENTS</p> <p>EIC: Minor wording revisions will be shown in pdf sent separately.</p> <p>We have now eliminated some words and replaced others as suggested (P7; L16: represent by are, P18; L6 to by for, P19; L7-8: whole structure by those recorded, and P22; L1: Bibliography by References).</p> <p>Please do not hesitate to contact us if any further improvements are needed.</p> <p>Best regards, Cristina Coccia</p>

Cristina Coccia
Wetland Ecology Department
EBD-CSIC, Av. Américo Vespucio s/n
41092, Seville, Spain
coccia@ebd.csic.es

Seville January 2016

Dear Dr. Ramasubramaniam,

Thank you very much for finding our ms AQSC-D-15-00119 provisionally suitable for publication in Aquatic Sciences once we have addressed the Editor-in-Chief comments. In the new version the word corrections suggested by the EIC have been taken into account. Please find attached the clean version of our manuscript. The answer to the EIC (in blue) is detailed below:

RESPONSES TO REVIEWERS' COMMENTS

EIC: Minor wording revisions will be shown in pdf sent separately.

We have now eliminated some words and replaced others as suggested (P7; L16: represent by are, P18; L6 to by for, P19; L7-8: whole structure by those recorded, and P22; L1: Bibliography by References).

Please do not hesitate to contact us if any further improvements are needed.

Best regards,

Cristina Coccia

1
2 1 Niche partitioning between invasive and native corixids (Hemiptera,
3
4 2 Corixidae) in south-west Spain.
5
6 3

7
8
9 4 Cristina Coccia^{1*}, Brian Fry², Francisco Ramírez³, Luz Boyero^{1,4,5}, Stuart E. Bunn², Carmen
10
11 5 Diz-Salgado¹, Mark Walton⁶, Lewis Le Vay⁶ and Andy J. Green¹
12
13
14
15 6

16
17
18 7 ¹Department of Wetland Ecology, Doñana Biological Station (EBD-CSIC), Américo
19
20 8 Vespucio s/n, 41092 Seville, Spain

21
22 9 ²Australian Rivers Institute, Griffith University, Nathan, Queensland, Australia, 4111

23
24 10 ³Department of Biological Conservation, Doñana Biological Station (EBD-CSIC), Américo
25
26 11 Vespucio s/n, 41092 Seville, Spain

27
28 12 ⁴Present address: Faculty of Science and Technology, University of the Basque Country
29
30 13 (UPV/EHU), Leioa, Spain

31
32 14 ⁵Present address: IKERBASQUE, Basque Foundation for Science, Bilbao, Spain

33
34 15 ⁶Centre for Applied Marine Sciences, Bangor University, Wales, UK

35
36 16 *Corresponding author: *coccia@ebd.csic.es*
37
38
39
40

41 17 **Acknowledgements**

42
43 18 This research was funded by project P10- RNM-6262 financed by the Consejería de
44
45 19 Innovación, Ciencia y Empresa, Junta de Andalucía, and by a JAE predoctoral grant from
46
47 20 CSIC. Permission to work in Veta la Palma was provided by Pesquerías Isla Mayor, S.A. We
48
49 21 are grateful to Raquel López Luque for laboratory and field assistance and to Renaud de
50
51 22 Stephanis and Ricardo Alvarez for their useful advice. We are also grateful to David
52
53 23 Aragonés Borrego for preparing the map of the study area
54
55
56
57
58
59
60
61
62
63
64
65

1 Abstract

2 *Trichocorixa verticalis verticalis*, a North American water boatman, is the only alien corixid
3 in European fresh waters. It has rapidly spread, becoming the dominant corixid in and around
4 the Doñana protected area in SW Spain. Its high abundance and similar morphology to native
5 corixids suggest that *T. verticalis* may impact them through competition for food. Here we
6 used stable isotopes of nitrogen (N) and carbon (C) and Bayesian analytical tools to
7 investigate niche partitioning between *T. verticalis* and the native water boatman *Sigara*
8 *lateralis* and *S. scripta* through a combination of experimental and field data. Species sampled
9 from permanent ponds and laboratory aquaria could be separated based on their isotopic
10 values ($\delta^{15}\text{N}$ and $\delta^{13}\text{C}$). *S. lateralis* consistently showed higher $\delta^{15}\text{N}$ values than *T. verticalis*,
11 suggesting that the invasive species may be feeding at a lower trophic position and relying
12 more on herbivory than its native competitors. This was particularly true for the *T. verticalis*
13 nymph stage, which showed lower $\delta^{15}\text{N}$ values compared to adults, indicating ontogenetic
14 dietary shifts. In contrast, native corixids and the invasive species showed similar isotopic
15 compositions in temporary habitats at different stages in the flooding-desiccation cycle,
16 suggesting some degree of niche overlap and a slight reduction in trophic level for *S. lateralis*
17 when inhabiting ephemeral systems. The combination of experimental and field data can help
18 elucidate trophic interactions during a biological invasion. Stable isotopes provided insights
19 into the trophic ecology of this invasive species and into the mechanisms facilitating co-
20 existence with native species.

21
22 Key words: Invasive species, Corixidae, *Trichocorixa*, *Sigara*, Stable isotopes, Niche
23 partitioning

1 Introduction

2 Invasion by exotic species is a global ecological and conservation problem, causing
3 community change and species extinctions worldwide (Crowl et al. 2008; Vilà et al. 2010;
4 Hermoso, et al., 2011; Strayer 2012). The impact caused by biological invasions can range
5 from undetectable to dramatic (Edelaar and Tella 2012) depending partly on how invasive
6 species traits, including behaviour or physiology, match those of natives in the invaded
7 community (Strauss et al. 2006). Several studies have related traits such as competitive ability
8 for food and/or space to invasion success, as invasive species are often considered superior
9 competitors (Levine et al. 2003; Vilà and Weiner, 2004).

10 When competition occurs, the degree of resource/niche overlap among invasive and native
11 species largely determines species exclusion or co-existence (De Roos et al. 2008). Niche
12 similarity between species can cause the strongest impact on inferior competitors (Dick 2008)
13 through behavioural alterations (i.e., shifts in habitat use and foraging niche) or species
14 exclusion and extinction (Begon et al. 1996; Simon and Townsend 2003). In contrast, niche
15 differentiation, in which competing species specialise on distinct resources (resource
16 partitioning) or exploit the same resources at different places or times (spatial or temporal
17 niche partitioning), favours species co-existence (Koch 1974; Tilman 1982; Chesson 2000).

18 The outcome of species relationships, however, is context specific (Chesson 2000). For
19 example, competitive interactions, within and between species, may be reversed among
20 habitats that differ in productivity and resource diversity (Tobler 2008). In recent years, stable
21 isotopes and novel quantitative metrics have been shown to be valuable tools in identifying
22 trophic niche characteristics and trophic interactions among species (Olsson et al. 2009;
23 Zambrano et al. 2010; Piscart et al. 2011; Eloranta et al. 2013; Jackson and Britton 2013).
24 Stable isotopes are especially powerful because they integrate information over long time
25 periods (Bearhop et al. 2004; Olsson et al. 2009; Atkinson et al. 2010), and do not have the

1 biases of gut analysis (Clarke et al. 2005; Araújo et al. 2007) which is difficult to apply in
2 small animals, given the difficulties of identifying material in their guts.

3 Freshwater habitats have proportionally more invaders than terrestrial systems (Vitousek
4 et al. 1997). Nonetheless, for the majority of these invaders the effects on the invaded systems
5 are largely unknown. Exceptions include the zebra mussel *Dreissena polymorpha*, the
6 mosquitofish *Gambusia holbrooki* and the crayfish *Procambarus clarkii* (Pimentel et al.
7 2005; Caiola and Sostoa, 2005; Savini et al. 2010). The North American boatman
8 *Trichocorixa verticalis verticalis* (Fieber, 1851) (Heteroptera, Corixidae) is a successful
9 invader in the south-west Iberian Peninsula. First recorded in the Algarve (Portugal) in 1997,
10 *T. verticalis* has since become widespread in southern Portugal (Sala and Boix 2005), south-
11 west Spain (Rodríguez-Pérez et al. 2009) and Morocco (L'Mohdi et al. 2010), and is
12 predicted to spread widely across Europe and the Mediterranean region in the future
13 (Guareschi et al. 2013). It has established populations at several sites, including the Doñana
14 wetland complex, where it is the dominant corixid in saline wetlands, whilst is still scarce in
15 less saline waters in the same area (Rodríguez-Pérez et al. 2009; Van de Meutter et al. 2010).

16 Given the voracity of *T. verticalis* in its native range (Wurtsbaugh 1992) and the
17 morphological similarity of piercing and sucking mouthparts within Hemiptera, we can
18 expect resource competition between the invasive corixid and native corixids, especially
19 *Sigara lateralis* and *S. scripta*, which are often syntopic in the invaded range (Carbonell et al.
20 2015). Furthermore, the wide spectrum of potential food used by *T. verticalis*, including
21 zooplankton, filamentous algae and dipteran larvae (Kelts 1979; Simonis 2013) suggests that
22 other important ecological interactions might occur. In its native range, *T. verticalis* is likely
23 to cause changes in ecosystem processes via trophic cascades (Wurtsbaugh 1992; Simonis
24 2013). Nonetheless, there is no previous information about trophic relationships between *T.*
25 *verticalis* and native corixid species, or about its trophic ecology in the invaded areas.

1 In this study we applied stable isotopes ($\delta^{15}\text{N}$ and $\delta^{13}\text{C}$) and Bayesian tools to
2 experimental and field data to assess the potential of *T. verticalis* to compete with native
3 corixid species. We are not aware of any previous stable isotope studies of resource
4 partitioning that compare stable isotopic variability between related species that include both
5 laboratory and wild populations. This approach offers the possibility to examine the trophic
6 relationships between species, removing biases that may be related to spatial or age
7 variability. Specifically, we examine niche partitioning among wild populations of *T.*
8 *verticalis* and native corixids in permanent and temporary waterbodies in Doñana, as well as
9 in experimental populations reared in the laboratory under standardized conditions, so as to
10 understand how their trophic relationships change according to habitat variability. We
11 hypothesised that niche differentiation through resource partitioning facilitates the co-
12 existence in permanent, saline ponds where resource availability is expected to be more
13 constant. However, we expected a different outcome of species interactions in temporary
14 waterbodies where *T. verticalis* was often less abundant than native corixids and resource
15 availability should be more variable. In addition, we aimed to further our understanding of the
16 trophic ecology of *T. verticalis* in the introduced range, and of its potential impact in the
17 invaded aquatic systems. Finally, we discuss the implications of our results for conservation
18 of native corixids and prey communities.

19 20 **Methods**

21 **Laboratory experiment**

22 To reduce the effect of factors other than niche partitioning that may potentially confound
23 isotopic differences between corixids (e.g. age-related dietary differences or spatial
24 segregation), a laboratory experiment was conducted during August and September 2012 at

1 the Doñana Biological Station-CSIC. Aquaria (6 L, 27x17x18 cm) were filled with sediments
2 and water collected from the FAO pond within Doñana National Park, where *T. verticalis* and
3 *S. lateralis* were co-existing. Salinity in aquaria was less than 1 ppt. One plastic circular jar
4 lid (~9 cm diameter) was added to each aquarium as a substrate for periphyton growth. From
5 here on, we use periphyton to refer to epilithon (periphyton growth on hard substrate) and
6 epiphyton (periphyton on macrophyte). Aquaria were maintained with a 12h:12h dark/light
7 regime until flora and fauna from egg and seed banks within pond sediment colonized them.
8 After three weeks, we added V instar corixid nymphs to each aquarium. These nymphs had
9 been reared in the laboratory from the egg stage. To collect eggs, adults of *T. verticalis* and *S.*
10 *lateralis* originating from the FAO pond were placed separately in aquaria containing 5 X 5
11 cm of 500 µm plastic mesh (known from previous observations to be a preferred substrate for
12 egg laying). Mesh pieces were later carefully removed and placed in separate aquaria until
13 eggs hatched. Nymphs were then fed with lyophilized microalgae (*Tetraselmis chuii*) until
14 they reached the V instar.

15 We added 15 nymphs of each species in the same aquarium, with two replicates. Live
16 chironomid larvae from the FAO pond were added one day after the experiment started. After
17 12 days, adult corixids and resources were removed and processed for stable isotope analysis.
18 This time is considered to capture the overall isotope change in invertebrates when changing
19 their diet (Prasifka et al. 2004; Gratton and Forbes 2006).

20 21 Field study

22 Corixids and their potential food resources were collected during June-July 2011 and
23 February 2012 from areas within the Doñana wetland complex (Fig. 1). Five permanent,
24 saline ponds, located in Veta la Palma estate within Doñana Natural Park (hereafter VLP),
25 were sampled twice during summer (July) and winter (February). Four temporary waterbodies

1 were sampled only once (June). These sites were inside Doñana National or Natural Park and
2 included two ponds (local names 9N3PP and AC3, hereafter T1 and T2), one section of a
3 seasonal stream (Entremuros, hereafter T3), and one shallow lake (Lucio del Lobo, hereafter
4 T4). These temporary sites started to fill in December 2010, and to dry out progressively in
5 June 2011. The colonization of these ponds by adult corixids started in March 2011 with a
6 few individuals, but densities of adults and nymphs increased from then on (authors'
7 unpublished data). Sampling in June therefore decreased the probability of collecting migrants
8 from the VLP ponds. Water salinities varied spatially and temporally, from 8.7 and 19.8 psu
9 in summer to 10.2 and 18.3 psu in winter in permanent ponds, and between 5.4 and 15.9 psu
10 in temporary sites (see Online Resource 1). Details of VLP and its aquatic invertebrate
11 community are given by Rodríguez-Pérez and Green (2012) and Walton et al. (2015). The
12 temporary sites were described by Frisch et al. (2012).

13 In general, the alien *T. verticalis* is much more abundant and dominates in the permanent,
14 saline habitats in VLP, whereas native corixids dominate in the temporary sites of lower
15 salinity (Rodríguez-Pérez et al. 2009; Van de Meutter et al. 2010). We selected *Sigara*
16 *lateralis* and *S. scripta* because they are the most frequent and abundant corixids found in
17 syntopy with *T. verticalis*. Corixid size differed between species, with *S. lateralis* (mean total
18 length \pm SE, 4.73 ± 0.25 mm, $n = 103$,) the larger species, followed by *S. scripta* (4.39 ± 0.25
19 mm, $n = 93$) and *T. verticalis* (4.16 ± 0.32 mm, $n = 111$).

20 When possible, 20 adults of each species, balanced for sex, were collected. Nymphs (III, IV
21 and V instars) of *T. verticalis* were only obtained in February from permanent ponds. No
22 adult corixids were found in two of the five permanent ponds sampled in winter. Details of
23 sampling methods for flora and fauna in permanent and temporary sites are summarized in
24 Online Resource 2. With the exception of periphyton, potential resources were always
25 collected at different locations within permanent ponds, because they were also used for a

1 broader study of pond food webs (Walton et al. 2015). In the case of temporary waterbodies,
2 corixids and resources were collected in the same area (ca. 20 m²) within the site.

3 After collection, samples were kept inside plastic containers partly filled with water,
4 placed within a portable freezer and transported to the laboratory. Once at the laboratory,
5 suspended particulate organic matter (POM) was obtained by filtering a known volume of
6 water (pre-filtered through a 100 µm mesh) onto Whatman GF/F glass fiber filters (ø = 47
7 mm) under vacuum. Filters were then packed into aluminium paper and frozen. The
8 periphyton suspension (Online Resource 2) was filtered through Whatman GF/F glass fiber
9 filters in the same way POM. Flora and fauna were rinsed with distilled water and put in
10 Eppendorf tubes (1.5 ml) or in plastic bags before being frozen. Samples were frozen as soon
11 as possible using a liquid nitrogen tank and stored until processing. All samples were thawed
12 and oven-dried at 50°C for 24h before stable isotope analysis.

13 POM and periphyton were exfoliated from the glass filters and pulverized. POM filters
14 from VLP were fumigated with concentrated HCl and subsequently re-dried. VLP sediments
15 were sequentially acidified with 0.1M HCl to remove carbonates then oven-dried, while
16 sediments from the temporary sites were divided into two groups. For δ¹³C analyses,
17 subsamples were washed with diluted HCl to remove carbonates and redried. δ¹⁵N was
18 measured on untreated samples, as HCl treatment has been reported to affect δ¹⁵N values
19 (Bunn et al. 1995). In both study areas, sediments were considered as a proxy for periphyton
20 (i.e. epipelon).

21 Adult corixids from VLP were analyzed whole, while adults minus one leg were analysed
22 from temporary sites. *T. verticalis* nymphs and chironomids were pooled for analyses, as
23 samples of multiple individuals. Dry samples were homogenised, weighed and packed into tin
24 capsules before analysis.

1 Stable isotope analysis

2 Isotopic analyses of carbon and nitrogen contents were carried out at the UC Davis Stable
3 Isotope Facility (University of California, Davis) and in the Laboratory of Stable Isotopes at
4 EBD-CSIC (www.ebd.csic.es/lie/index.html). At UC Davis, samples from VLP were analysed
5 using a PDZ Europa Scientific Roboprep elemental analyser in line with a PDZ Europa Hydra
6 20/20 isotope ratio mass spectrometer (Crewe, UK). At the EBD-CSIC, samples of the
7 laboratory experiment and temporary sites (each about 0.9–1 mg) were combusted using a
8 continuous flow isotope-ratio mass spectrometry system by means of a Flash HT Plus
9 elemental analyser coupled to a Delta-V Advantage isotope ratio mass spectrometer via a
10 CONFLO IV interface (Thermo Fisher Scientific, Bremen Germany).

11 All isotope results are expressed in δ -notation as parts per thousand (‰) deviation, and
12 referred to international standards for nitrogen (i.e., Air) and carbon (i.e., Vienna Pee Dee
13 Belemnite) as defined by the equation: $\delta^{13}\text{C}$, $\delta^{15}\text{N} = [(R_{\text{sample}} / R_{\text{reference}}) - 1] \times 10^3$, where R =
14 $^{13}\text{C}/^{12}\text{C}$ for carbon and $^{15}\text{N}/^{14}\text{N}$ for nitrogen. The standard error (based on replicate analyses of
15 standard reference material) for samples measured at UC Davis was $\pm 0.1\text{‰}$ and $\pm 0.1\text{‰}$ for
16 $\delta^{13}\text{C}$ and $\delta^{15}\text{N}$, respectively and for samples measured at EBD-CSIC was $\pm 0.05\text{‰}$ and \pm
17 0.1‰ for $\delta^{13}\text{C}$ and $\delta^{15}\text{N}$, respectively. Online Resource 3 gives the standard reference
18 materials used at each laboratory.

19 A total of 505 corixids (277 *T. verticalis*, 160 *S. lateralis* and 68 *S. scripta*) were analyzed
20 from field studies, and 34 (18 *T. verticalis* and 16 *S. lateralis*) from laboratory experiments.
21 C:N ratios ranged from 3.5 to 3.9 for *S. lateralis*, *T. verticalis* and *S. scripta*, so $\delta^{13}\text{C}$ values
22 were not corrected according to differences in lipid contents (Post et. al. 2007).

1 Statistical analyses

2 Non parametric Kruskal–Wallis or Mann-Whitney U tests were used to test for differences
3 in $\delta^{13}\text{C}$ and $\delta^{15}\text{N}$ values among species, or between *T. verticalis* adults and nymphs. These
4 tests were conducted within each waterbody (permanent or temporary) or aquarium.
5 Significance levels of non-parametric post hoc tests were Holm-Bonferroni corrected, when
6 appropriate.

7 These non-parametric tests were also used to test for spatial (among ponds) differences in
8 isotopic values for species and food sources, and seasonal differences in *T. verticalis* isotopic
9 composition and food sources. These analyses were conducted using the ponds sampled in
10 both seasons (3 permanent ponds) and the food sources sampled in each pond (i.e. sediments
11 and POM).

13 Estimated trophic position within habitats

14 Within each aquarium or waterbody (permanent and temporary) we constructed the
15 mixing polygon of potential sources and corrected consumer data for trophic enrichment
16 using the values reported by McCutchan et al. (2003): $\Delta^{13}\text{C}$ 0.5‰ and $\Delta^{15}\text{N}$ 2.3‰ for corixids
17 with mixed diet. We also estimated the relative mean trophic position of corixids by using
18 POM as the baseline. POM was selected as an appropriate baseline because this was the
19 resource common to each studied system. Given the larger error associated with the use of
20 primary producers (Vander Zanden and Rasmussen 2001), absolute values for these estimates
21 must only be considered as a proxy of their actual trophic position. However, since corixid
22 $\delta^{15}\text{N}$ values were corrected for site-specific $\delta^{15}\text{N}$ baselines, these estimates are still useful for
23 evaluating differences in trophic positions across systems.

1 Niche width and trophic structure

2 To visualise how corixid populations were separated, or overlapped each other in $\delta^{13}\text{C}$ -
3 $\delta^{15}\text{N}$ bi-plot space within each system, we calculated Standard Ellipse Areas corrected for
4 sample size (SEAc expressed in $\%o^2$) following Jackson et al. (2011) and using Bayesian
5 Stable Isotopes Ellipses (SIBER) in the SIAR package in R. Standard ellipses contained ca.
6 40% of the data, and were obtained from the variance and covariance matrix of $x(\delta^{13}\text{C})$ and y
7 ($\delta^{15}\text{N}$) data. Therefore, an ellipse represents the core isotopic niche for each species and is a
8 proxy of the richness and evenness of resources consumed by the population (Bearhop et al.
9 2004). When the spatial variation in corixid isotopic composition could be dismissed
10 (Cummings et al. 2012), the SEAc was used to calculate the degree of standard ellipse overlap
11 between species within each individual pond (i.e. the percentage of area that overlaps relative
12 to the total isotopic niche occupied by the two species), and the Bayesian estimates of SEA
13 (SEAB , bootstrapped $n = 10000$) were generated to test for significant differences between
14 corixid isotopic niche widths by comparing their confidence intervals (Jackson et al. 2012).
15 The SEAc method is equivalent to the convex hull area proposed by Layman et al. (2007),
16 and has the advantage of avoiding any bias (Brind'Amour and Dubois 2013) when a
17 minimum of 20 individuals is used, as we often did in this study. However, slightly lower
18 sample sizes are also less biased if the variability in populations is low (Syväranta et al.
19 2013). Jackson et al. (2011) further discussed the relationship between SEA, SEAc and SEAB .
20 We tested for the distance between ellipse centroid locations (D) following the methodology
21 of Turner et al. (2010). Two centroids are considered to occupy different locations if the
22 distance between them is significantly greater than zero (Turner et al. 2010). All these metrics
23 and test statistics were performed with R (v 2.15.1), using the package SIAR (Jackson et al.
24 2011) and the scripts provided by Turner et al. (2010).

1 Results

2 Stable Isotopes

3 *T. verticalis* had significantly lower $\delta^{15}\text{N}$ values than *S. lateralis* in each aquarium (Mann-
4 Whitney U tests $P < 0.05$, Fig. 2), but $\delta^{13}\text{C}$ values differed significantly only in the second
5 aquarium AQ2 (mean isotopic differences between species: 0.3‰ for $\delta^{13}\text{C}$ and 3.6‰ for $\delta^{15}\text{N}$
6 at AQ1; 1.1‰ for $\delta^{13}\text{C}$ and 1.7‰ for $\delta^{15}\text{N}$ at AQ2, Table 1).

7 *T. verticalis* and *S. lateralis* showed significant differences in both $\delta^{13}\text{C}$ and $\delta^{15}\text{N}$ values
8 within each permanent pond where they co-existed ($P < 0.001$, Fig. 3). On average, *S.*
9 *lateralis* was more ^{13}C -depleted and ^{15}N -enriched than *T. verticalis* (mean isotopic differences
10 between species: 4.5‰ for $\delta^{13}\text{C}$ and 1.3‰ for $\delta^{15}\text{N}$ at pond A3; 2.5‰ for $\delta^{13}\text{C}$ and 3.3‰ for
11 $\delta^{15}\text{N}$ at pond B3, Table 1). We did not find isotopic differences among the ponds where both
12 species co-existed for *T. verticalis* ($P > 0.05$), but a significant difference in $\delta^{13}\text{C}$ ($P = 0.02$)
13 was found for *S. lateralis*. We did not find any significant differences in the isotope values of
14 the common trophic sources between ponds ($P > 0.05$).

15 *T. verticalis* adults were more ^{15}N -enriched than nymphs at permanent ponds B7 (0.9‰)
16 and A5 (1.0‰) ($P < 0.05$), and significantly more ^{13}C -depleted (2.4‰) than nymphs at pond
17 B7 ($P = 0.006$). No differences were found between adults and nymphs at pond A7 (Online
18 Resource 4). Adults of *T. verticalis* showed significant spatial differences in both $\delta^{13}\text{C}$ and
19 $\delta^{15}\text{N}$, but we did not find any isotopic differences for sediments or POM ($P > 0.05$) between
20 ponds.

21 Strong seasonal differences were also found for $\delta^{13}\text{C}$ and $\delta^{15}\text{N}$ values ($P < 0.05$). In
22 winter, *T. verticalis* was overall more ^{13}C -depleted (mean = -18.4‰) but ^{15}N -enriched (mean
23 = 11.4‰) than in summer (mean $\delta^{13}\text{C} = -16.7$ ‰; mean $\delta^{15}\text{N} = 9.7$ ‰). We did not find any
24 seasonal differences in $\delta^{13}\text{C}$ for sediments or POM ($P > 0.05$), but there was a significant

1 seasonal difference in $\delta^{15}\text{N}$ value in each food source ($P < 0.05$). In winter, values for
2 sediments and POM were more ^{15}N -depleted than in summer (sediments mean = 8.06 vs.
3 11.20; POM mean = 2.52 vs. 6.16) (Online Resource 5).

4 Interspecific differences in isotopic values were more pronounced among temporary sites
5 (Fig. 4). *T. verticalis* was significantly ^{13}C -enriched at waterbody T1 relative to *S. lateralis*
6 and *S. scripta*, but the opposite was observed at T2 (Holm-Bonferroni test $P < 0.05$). The alien
7 species was significantly enriched in ^{13}C relative to *S. lateralis* at T4 ($P < 0.001$), but depleted
8 in ^{13}C compared to *S. scripta* at T3 ($P = 0.01$, Table 1). *T. verticalis* was significantly depleted
9 in ^{15}N compared to both native species at T1 ($P < 0.001$, Table 1) and to *S. lateralis* at T4 ($P =$
10 0.03). Strong spatial differences between temporary sites were also found for *T. verticalis* and
11 *S. scripta* in $\delta^{13}\text{C}$ values (Kruskal-Wallis test $P < 0.001$) and in both $\delta^{13}\text{C}$ and $\delta^{15}\text{N}$ values for
12 *S. lateralis* ($P < 0.001$). Both $\delta^{13}\text{C}$ and $\delta^{15}\text{N}$ values of sediments and POM also differed
13 among sites ($P < 0.05$). Spatial differences were found in $\delta^{15}\text{N}$ for periphyton ($P = 0.03$) and
14 in $\delta^{13}\text{C}$ for chironomids ($P = 0.01$), but we did not find any isotopic difference for *Scirpus*
15 spp. among sites ($P > 0.05$) (Online Resource 6).

17 Estimated trophic position within habitats

18 The estimated mean (\pm SD) trophic position was at 3.3 ± 1.4 for *S. lateralis* and at $2.1 \pm$
19 1.2 for *T. verticalis* in the laboratory experiment (Fig. 2). Similarly, in permanent ponds
20 *S. lateralis* fed at a higher trophic level (3.4 ± 0.4) than *T. verticalis* (2.4 ± 0.1). In temporary
21 waterbodies, the mean estimated trophic position was at 2.1 ± 0.9 for *S. lateralis*, at 1.9 ± 0.7
22 for *S. scripta* and at 1.7 ± 0.8 for *T. verticalis*.

24 Niche width differences among species

25 SEA_B values did not differ significantly between *T. verticalis* and *S. lateralis* within each

1 aquarium where they co-existed, and SEAc showed complete segregation (Table 2).

2 SEAB comparisons between *T. verticalis* and *S. lateralis* were not performed within each
3 permanent pond or between them, as the observed subsets within species (Fig. 3) could be
4 largely the result of spatial variability in the isotopic composition either between or among
5 ponds, preventing a reliable comparison of their dietary and isotopic niche variability.
6 Nevertheless, it was evident that no SEAc overlap existed between species at A3 and B3.

7 In temporary waters, *T. verticalis* had a significantly larger SEAB than *S. lateralis* at T2
8 and T4 (SEAc of *T. verticalis* 75 and 80% larger than the SEAc of *S. lateralis*, respectively)
9 (Table 2). At T1 SEAB was significantly smaller for *T. verticalis* than for *S. lateralis* (the
10 SEAc of *T. verticalis* was 43% smaller than that of *S. lateralis*). There were no significant
11 differences in SEAB for *T. verticalis* and *S. scripta* (Table 2). Maximum SEAc overlap was
12 found at T4 between *T. verticalis* and *S. scripta* (27%) and at T3 between *T. verticalis* and *S.*
13 *lateralis* (31%). These were the only two cases in which the centroid locations for different
14 corixid species were not statistically different (Table 3; Figs. 2-4).

16 Discussion

17 To our knowledge, this is the first isotopic study that compares trophic relationships
18 between invasive and native aquatic insects in different ecosystems, supported by an
19 experimental approach. Stable isotopes revealed strong resource partitioning between species
20 with little or no isotopic niche overlap in permanent ponds when water levels are relatively
21 stable, but also some degree of niche overlap in unstable temporary sites. These results are in
22 agreement with niche theory predictions, as native and invasive corixids appear to partition
23 the resources to co-exist in response to restrictions in resource conditions. This resource
24 partitioning has the potential to affect the distribution and abundance of the native species,

1 resulting from inadequate nutrient intake due to resource limitations or from the energetic
2 investments required for catching prey.

3 4 5 6 7 4 Limitations of this study

8
9 5 During this study we encountered some of the limitations observed in other isotopic
10 studies, including a high degree of spatial and temporal variability in basal resources. We
11 cannot be sure to what extent the isotope variability among ponds derived from movement
12 and foraging of individuals in different sites, diet specialization or differences in the
13 magnitude of variation of basal resources between sites (Bolnick et al. 2003; Bearhop et al.
14 2004). In addition, various physiological processes, including life stage, growth rate or body
15 size (Fry and Arnold 1982; Haubert et al. 2005; Carleton and Martínez del Rio 2005) may
16 have also influenced the isotopic variability of corixids found in this study.

17
18 13 Lastly, for resources composed of a mixture of components, such as POM and periphyton
19 the variability may have been a product of other factors including seasonal changes in species
20 composition and growth rate, slight differences at a microscale level and differences in the
21 proportion of living organisms and detritus between samples (Trudeau and Rasmussen 2003;
22 Borduqui, Ferragut and Bicudo 2008; Gu 2009).

23
24 18 We are unable to assess the relative contribution of these factors to the observed
25 variability in species isotopic composition between sites, but this was not our objective. Our
26 results support the initial predictions of changes in the relative position of $\delta^{13}\text{C}$ and $\delta^{15}\text{N}$
27 values between co-existing invasive and native corixids among the studied habitats. This
28 provided new information about the mechanisms behind the co-existence of *T. verticalis* and
29 native corixids in Doñana, and furthers our understanding of the basis of the success of *T.*
30 *verticalis* in the introduced range.

1 Trophic relationships between *T. verticalis* and native corixids

2 Permanent ponds and aquaria

3 A prerequisite for species co-existence in stable habitats, assuming that consumers and
4 resources are all in equilibrium, is that species must exploit different resources to survive
5 (Hutchinson 1958). We found consistent differences in both $\delta^{13}\text{C}$ and $\delta^{15}\text{N}$ values between the
6 native and the invasive species in both permanent ponds and experimental aquaria, and no
7 isotopic niche overlap between them. We cannot exclude the possibility that *S. lateralis* found
8 in saline permanent ponds were migrants that had been feeding in other sites of low salinity
9 with different food resources (Velasco et al. 2006). However, our aquarium experiment
10 indicated that when confined in the same conditions, *T. verticalis* and *S. lateralis* fed on
11 different food items, facilitating their co-existence.

12 Omnivorous corixids such as *T. verticalis* and *S. lateralis* (Murillo and Recasens 1986;
13 Simonis 2013) possess similar piercing-sucking mouthparts (stylets) suitable for feeding on
14 both plants and animals. However, previous studies have confirmed the importance of animal
15 prey to *S. lateralis* (Murillo and Recasens 1986; Layer et al. 2010) and others have found *T.*
16 *verticalis* to be predators on Cladocera and *Artemia* in its native range (Wurtsbaugh 1992;
17 Simonis 2013). In contrast, our results showed that *T. verticalis* fed at a lower trophic level
18 than *S. lateralis* both in the experimental aquaria and in permanent ponds, and suggest a
19 tendency of *T. verticalis* towards herbivory and a higher importance of animal prey for *S.*
20 *lateralis*. This may partly be explained by the salinity of the permanent ponds we studied,
21 which are too saline for cladocerans but are not hypersaline and have no *Artemia* (Frisch et al.
22 2006). Our data did not allow a detailed assessment of corixid diets, as many corixids fell
23 outside the polygons that could be constructed with measured resources within each system,
24 so we are not able to estimate if small or large differences exist in their diet. However, plants
25 and animals from the laboratory experiment had sufficiently distinct $\delta^{13}\text{C}$ values to aid

1 approximate identification of their diet. In fact, the close isotopic value of Chironomidae and
2 Oligochaeta to *S. lateralis* (Fig. 2) suggested their inclusion in its diet. In contrast, *T.*
3 *verticalis* did not appear to be heavily reliant on animal prey (Fig. 2).

4 There was evidence of larger inter-individual variation in the field than in the laboratory
5 experiment for both species. Wide isotopic variation in wild populations is common in nature,
6 due to sexual or age differences, diet specialization and spatial variation (Fry et al. 1999;
7 Layman and Allgeier 2012). While we were unable to pinpoint the exact mechanism behind
8 this variation, it seems possible that spatial heterogeneity in basal resource values, within or
9 among ponds, explains the clustering of isotopic values we observed in each corixid species
10 in permanent ponds, and the much greater isotopic variation observed there for *T. verticalis*
11 and *S. lateralis* than in experimental aquaria.

12 Isotopic composition of sources can vary at very small scales (< 1 m) within a freshwater
13 system (Hill et al. 2008). Similarly, our results revealed considerable isotopic variation for
14 sources within a single permanent pond (Fig. 3), and how patchiness represented by between
15 aquarium variability (Fig. 2) can affect the isotopic composition of consumers in aquaria.
16 Therefore, it is possible that, despite the ability of both species to fly between waterbodies,
17 corixids in permanent ponds are very local in their feeding strategy and faithful to a patch,
18 their isotopic values reflecting the patch availability of the resources. However, individuals
19 may also disperse and feed between ponds that differed in basal resource values. Our result
20 did not support this hypothesis, as we did not find spatial differences (among permanent
21 ponds) in the isotopic values of sources. These two possibilities need to be investigated in the
22 future by more detailed spatial analyses of consumers and sources, as such high patch fidelity
23 would represent a very surprising result for a non-sessile organism.

1 Temporary waterbodies

2 The isotopic values of different corixid species were very similar at some of the four
3 temporary waterbodies but very different at others. Similar isotopic values do not necessarily
4 indicate similar diet, as corixids can feed on different sources that are not distinct enough
5 isotopically to allow discrimination. Similarly, isotope niche widths were site specific for
6 each species (Fig. 4). There are several possible explanations for the observed variability in
7 species isotopic composition (see above), but our results show that some degree of niche
8 overlap might also occur between the invasive and native corixids in highly variable systems
9 (Fig. 4).

10 During summer, with high temperatures and no rainfall, temporary aquatic habitats in Doñana
11 quickly reduce their depth and surface area and dry out completely before August (Serrano et
12 al. 2006; Frisch et al. 2012). In these conditions, corixid densities become very high and
13 opportunities for *S. lateralis* to feed on preferred prey may decrease, as other invertebrates
14 become scarce. At the same time, a high quantity of detritus caused by the decomposition of
15 organic matter becomes progressively mixed and concentrated in shallow waters where
16 corixids concentrate. In these conditions of disturbance and superabundant food of low
17 diversity, some individuals of both species are likely to exploit similar resources.

18 Niche overlap is not sufficient to indicate that competition between species occurs in these
19 habitats, especially without data that directly quantifies limitation or superabundance of food.
20 However, the existence of niche partitioning and the use of similar resources among native
21 and invasive corixids indicate that competitive interactions can exist between them.
22 Furthermore, *S. lateralis* seemed to occupy a slightly lower position in temporary waters with
23 respect to aquaria. Therefore, it seems possible that higher dietary plasticity of the native
24 species is the mechanism behind its co-existence with *T. verticalis*.

1 Trophic ecology of *T. verticalis* in stable permanent ponds

2 Stable isotopes suggest that the invasive species tends to be herbivorous in stable waters.
3 This result agrees with previous studies and personal observations that indicate *T. verticalis*
4 has a herbivorous strategy at the first instar stage (Campbell 1979; Kelts 1979), and a diet
5 based on periphyton as adults (Downing 2005; authors' personal observation). Periphyton is a
6 mixture of algae, cyanobacteria, heterotrophic microbes, detritus and mucilaginous
7 polysaccharides, and each of these is likely to have very different isotopic values to those
8 recorded during this study. It is possible that *T. verticalis* assimilated only some components
9 from this mixture. A periphyton-based diet is also supported by close relationships between
10 $\delta^{13}\text{C}$ values of *T. verticalis* from permanent ponds with those of periphyton during winter
11 (Online Resource 5).

12 Contrary to the typical winter ^{15}N -depletion (Harrod and Grey 2006), which was found for
13 POM and sediments during this study, *T. verticalis* was ^{15}N -enriched. This suggests this
14 seasonal variation in *T. verticalis* $\delta^{15}\text{N}$ values was not related to change in the importance of
15 periphyton in its diet, but was most likely explained by seasonal changes within periphyton
16 composition and its $\delta^{13}\text{C}$ and $\delta^{15}\text{N}$ values (Borduqui, Ferragut and Bicudo 2008) (Online
17 Resource 5). Thus, *T. verticalis* could be assigned to the grazer guild in our permanent pond
18 system.

19 Varying use of periphyton between permanent ponds and aquaria may partly reflect
20 differences in its composition with their different water chemistry (e.g. salinity, see Online
21 Resource 1), light intensity or with the substratum where growth occurs (i.e. rocks / solid
22 material, macrophytes and sediments). At higher nutrient concentrations, such as those of the
23 permanent ponds, periphyton may contain a higher proportion of green algae, more palatable
24 to grazers (Rejmánková and Komárková 2005).

1 Different isotopic values for nymph and adult *T. verticalis* suggest an ontogenetic dietary
2 shift, as found by Simonis (2013). However, different dynamics of tissue turnover between
3 life stages (Haubert et al. 2005) or increases in consumption rate during ontogeny (Simonis
4 2013) could also contribute to isotopic shifts between nymphs and adults, at least during
5 winter. Further studies (e.g. metabarcoding of gut contents) are needed to clarify this point, as
6 ontogenetic diet shift can play an important role in explaining the success of some organisms
7 in the invaded ecosystem, by allowing a better use of resources and/or reducing competition
8 (Céréghino 2006).

9 Conclusion

10 We showed how trophic interactions between native and invasive corixids change between
11 permanent and temporary waterbodies. These changes seem to indicate that the extent of
12 competition among corixids changes between habitats that differed in the types and
13 abundance of local food sources. Although these are results from only one sampling
14 campaign, our findings help to elucidate the processes underlying the co-existence of these
15 species, and raise further questions about this invasion that should be addressed in the future.
16 Climate change can decrease aquatic system productivity (O'Reilly et al. 2003), which
17 implies that competition for food between native and invasive species may become
18 exacerbated in the future. There is a need for further studies to fully understand the habitat
19 and foraging ecology of *T. verticalis* in its introduced range, especially since the species is
20 expected to spread across a large part of Europe (Guareschi et al. 2013). Long-term field and
21 mesocosm studies are required to assess the impact of this invasive species on the native
22 corixid community (including species not covered in the present study, see Carbonell et al. in
23 press), as well as on prey assemblages (e.g. through trophic cascades via predation on
24 zooplankton, Simonis 2013). The effect of the invader in other habitat types where it is

1 present in the Iberian Peninsula, such as solar saltworks (Van de Meutter et al. 2010; authors,
2 unpublished) should also be addressed.

3
4
5 3

6
7
8
9
10
11
12
13
14
15
16
17
18
19
20
21
22
23
24
25
26
27
28
29
30
31
32
33
34
35
36
37
38
39
40
41
42
43
44
45
46
47
48
49
50
51
52
53
54
55
56
57
58
59
60
61
62
63
64
65

References

- Araújo MS, Bolnick DI, Machado G, et al (2007) Using $\delta^{13}\text{C}$ stable isotopes to quantify individual-level diet variation. *Oecologia* 152:643–54.
- Atkinson CL, Opsahl SP, Covich AP, et al (2010) Stable isotopic signatures, tissue stoichiometry, and nutrient cycling (C and N) of native and invasive freshwater bivalves. *J North Am Benthol Soc* 29:496–505.
- Bearhop S, Adams CE, Waldron S, et al (2004) Determining trophic niche width: a novel approach using stable isotope analysis. *J Anim Ecol* 73:1007–1012.
- Begon M, Harper JL, Townsend CR (1996) *Ecology: individual, population and communities*. Blackwell Scientific Publications, London, U.K.
- Bolnick DI, Svanbäck R, Fordyce JA, et al (2003) The ecology of individuals: incidence and implications of individual specialization. *Am Nat* 161:1–28.
- Borduqui M, Ferragut C, Bicudo C (2008) Chemical composition and taxonomic structure vertical and seasonal variation of periphyton community in a shallow hypereutrophic reservoir (Garças Reservoir, São Paulo, Brazil). *Acta Limnol Bras* 20:381–392.
- Brind'Amour A, Dubois SF (2013) Isotopic diversity indices: how sensitive to food web structure? *PLoS One* 8:e84198.
- Bunn SE, Loneragan NR, Kempster MA (1995) Effects of acid washing on stable isotope ratios of C and N in penaeid shrimp and seagrass: Implications for food-web studies using multiple stable isotopes. *Limnol Oceanogr* 40:622–625.
- Caiola BN, Sostoa AD (2005) Possible reasons for the decline of two native toothcarps in the Iberian Peninsula: evidence of competition with the introduced Eastern mosquitofish. *J Appl Ichthyol* 21:358–363.
- Campbell BC (1979) The spatial and seasonal abundance of *Trichocorixa verticalis* (Hemiptera:Corixidae) in salt marsh intertidal pools. *Can Entomol* 111:1005–1011.
- Carbonell JA, Millán A, Green AJ, Céspedes V, Coccia C, Velasco J (2015). What traits underpin the successful establishment and spread of the invasive water bug *Trichocorixa verticalis* (Fieber, 1851)? *Hydrobiologia*. doi: 10.1007/s10750-015-2556-y.
- Carleton SA, Martínez del Rio C (2005) The effect of cold-induced increased metabolic rate on the rate of ^{13}C and ^{15}N incorporation in house sparrows (*Passer domesticus*). *Oecologia* 144:226–32.
- Céréghino R (2006) Ontogenetic diet shifts and their incidence on ecological processes: a case study using two morphologically similar stoneflies (Plecoptera). *Acta Oecologica* 30:33–38.
- Chesson P (2000) Mechanisms of maintenance of species diversity. *Annu Rev Ecol Syst* 31:343–366.
- Clarke LR, Videgar DT, Bennett DH (2005) Stable isotopes and gut content show diet overlap among native and introduced piscivores in a large oligotrophic lake. *Ecol Freshw Fish* 14:267–277.
- Crowl TA, Crist TO, Parmenter RR, et al (2008) The spread of invasive species and infectious disease as drivers of ecosystem change. *Front Ecol Environ* 6:238–246.
- Cummings DO, Buhl J, Lee RW, et al (2012) Estimating niche width using stable isotopes in the face of habitat variability: a modelling case study in the marine environment. *PLoS One* 7:e40539.
- De Roos AM, Schellekens T, Van Kooten T, Persson L (2008) Stage-specific predator species help each other to persist while competing for a single prey. *Proc Natl Acad Sci USA* 105:13930–5.
- Dick JTA (2008) Role of behaviour in biological invasions and species distributions; lessons from interactions between the invasive *Gammarus pulex* and the native *G. duebeni* (Crustacea: Amphipoda). *Contrib to Zool* 77:91–98.
- Downing AL (2005) Relative effects of species composition and richness on ecosystem properties in ponds. *Ecology* 86:701–715.
- Edelaar P, Tella JL (2012) Managing non-native species: don't wait until their impacts are proven. *Ibis (Lond 1859)* 154:635–637.
- Eloranta AP, Knudsen R, Amundsen PA (2013) Niche segregation of coexisting Arctic charr (*Salvelinus alpinus*) and brown trout (*Salmo trutta*) constrains food web coupling in subarctic lakes. *Freshw Biol* 58:207–221.

- 1 Frisch D, Cottenie K, Badosa A, Green AJ (2012) Strong spatial influence on colonization rates in a
 2 pioneer zooplankton metacommunity. PLoS One 7:e40205.
- 3 Frisch D, Rodríguez-Pérez H, Green AJ (2006) Invasion of artificial ponds in Doñana Natural Park,
 4 southwest Spain, by an exotic estuarine copepod. Aquat Conserv Mar Freshw Ecosyst 16:483–
 5 492.
- 6 Fry B, Arnold C (1982) Rapid ^{13}C / ^{12}C turnover during growth of brown shrimp (*Panaeus aztecus*).
 7 Oecologia 54:200–204.
- 8 Fry B, Mumford PL, Tam F, et al (1999) Trophic position and individual feeding histories of fish from
 9 lake Okeechobee, Florida. Can J Fish Aquat Sci 56:590–600.
- 10 Gratton C, Forbes AE (2006) Changes in $\delta^{13}\text{C}$ stable isotopes in multiple tissues of insect predators fed
 11 isotopically distinct prey. Oecologia 147:615–24.
- 12 Guareschi S, Coccia C, Sánchez-Fernández D, et al (2013) How Far Could the alien boatman
 13 *Trichocorixa verticalis verticalis* spread? Worldwide estimation of its current and future
 14 potential distribution. PLoS One 8:e59757.
- 15 Gu G (2009) Variation and controls of nitrogen stable isotopes in particulate organic matter of lakes.
 16 Oecologia 160: 421-431.
- 17 Harrod C, Grey J (2006) Isotopic variation complicates analysis of trophic relations within the fish
 18 community of Plußsee: a small, deep, stratifying lake. Arch für Hydrobiol 167:281–299.
- 19 Haubert D, Langel R, Scheu S, Ruess L (2005) Effects of food quality, starvation and life stage on
 20 stable isotope fractionation in Collembola. Pedobiologia (Jena) 49:229–237.
- 21 Hermoso V, Clavero M, Blanco-Garrido F, Prenda J (2011) Invasive species and habitat degradation
 22 in Iberian streams: an analysis of their role in freshwater fish diversity loss. Ecol Appl 21:175–
 23 88.
- 24 Hill WR, Fanta SE, Roberts BJ (2008) ^{13}C dynamics in benthic algae: Effects of light, phosphorus, and
 25 biomass development. Limnol Oceanogr 53:1217–1226.
- 26 Hutchinson GE (1958) Concluding remarks. Cold springs harbor symposium. Quant Biol 22:415–427.
- 27 Jackson AL, Inger R, Parnell AC, Bearhop S (2011) Comparing isotopic niche widths among and
 28 within communities: SIBER - Stable Isotope Bayesian Ellipses in R. J Anim Ecol 80:595–602.
- 29 Jackson MC, Britton JR (2013) Variation in the trophic overlap of invasive *Pseudorasbora parva* and
 30 sympatric cyprinid fishes. Ecol Freshw Fish 22:654–657.
- 31 Jackson MC, Donohue I, Jackson AL, et al (2012) Population-level metrics of trophic structure based
 32 on stable isotopes and their application to invasion ecology. PLoS One 7:e31757.
- 33 Kelts LJ (1979) Ecology of a tidal marsh corixid, *Trichocorixa verticalis* (Insecta, Hemiptera).
 34 Hydrobiologia 64:37–57.
- 35 Koch AL (1974) Competitive coexistence of two predators utilizing the same prey under constant
 36 environmental conditions. J Theor Biol 44:387–95.
- 37 L'Mohdi O, Bennis N, Himmi O, et al (2010) *Trichocorixa verticalis verticalis* (Fieber, 1851)
 38 (Hemiptera, Corixidae): une nouvelle espèce exotique au Maroc. Bol la Soc Entomológica
 39 Aragon 46:395–400.
- 40 Layer K, Hildrew A, Monteith D, Woodward G (2010) Long-term variation in the littoral food web of
 41 an acidified mountain lake. Glob Chang Biol 16:3133–3143.
- 42 Layman C, Allgeier J (2012) Characterizing trophic ecology of generalist consumers: a case study of
 43 the invasive lionfish in The Bahamas. Mar Ecol Prog Ser 448:131–141.
- 44 Layman CA, Arrington AD, Montana CG, Post DM (2007) Can stable isotope ratios provide for
 45 community-wide measures of trophic structure? Ecology 88:42–48.
- 46 Levine JM, Vilà M, D'Antonio CM, et al (2003) Mechanisms underlying the impacts of exotic plant
 47 invasions. Proc Biol Sci 270:775–81.
- 48 McCutchan JHJ, Lewis WMJ, Kendall C, Mcgrath CC (2003) Variation in trophic shift for stable
 49 isotope ratios of carbon, nitrogen, and sulfur. Oikos 102:378–390.
- 50 Murillo J, Recasens L (1986) Hábitos alimentarios de *Sigara lateralis* (Heteroptera, Corixidae). Misc
 51 Zool 10:135–140.
- 52 Olsson K, Stenroth P, Nyström P, Granéli W (2009) Invasions and niche width: does niche width of an
 53 introduced crayfish differ from a native crayfish? Freshw Biol 54:1731–1740.
- 54 O'Reilly CM, Alin SR, Plisnier PD, Cohen AS, McKee BA (2003) Climate change decreases
 55 aquatic ecosystem productivity of lake Tanganyika, Africa. Nature 424:766–768.

- 1 Pimentel D, Zuniga R, Morrison D (2005) Update on the environmental and economic costs
2 associated with alien-invasive species in the United States. *Ecol Econ* 52:273–288.
- 3 Piscart C, Roussel JM, Dick JTA, et al (2011) Effects of coexistence on habitat use and trophic
4 ecology of interacting native and invasive amphipods. *Freshw Biol* 56:325–334.
- 5 Post DM, Layman CA, Arrington DA, Takimoto G, Quattrochi J, Montaña CG (2007) Getting to the
6 fat of the matter: models, methods and assumptions for dealing with lipids in stable isotope
7 analyses. *Oecologia* 152:159-179.
- 8 Prasifka JR, Heinz KM, Winemiller KO (2004) Crop colonisation, feeding, and reproduction by the
9 predatory beetle, *Hippodamia convergens*, as indicated by stable carbon isotope analysis. *Ecol*
10 *Entomol* 29:226-233.
- 11 Rejmánková E, Komárková J (2005) Response of cyanobacterial mats to nutrient and salinity changes.
12 *Aquat Bot* 83:87–107.
- 13 Rodríguez-Pérez H, Florencio, Gómez-Rodríguez C, et al (2009) Monitoring the invasion of the
14 aquatic bug *Trichocorixa verticalis verticalis* (Hemiptera: Corixidae) in the wetlands of Doñana
15 National Park (SW Spain). *Hydrobiologia* 634:209–217.
- 16 Rodríguez-Pérez H, Green AJ (2012) Strong seasonal effects of waterbirds on benthic communities in
17 shallow lakes. *Freshw Sci* 31:1273–1288.
- 18 Sala J, Boix D (2005) Presence of the nearctic water boatman *Trichocorixa verticalis verticalis*
19 (Fieber, 1851) (Heteroptera, Corixidae) in the Algarve region (S Portugal). *Graellsia* 61:31–36.
- 20 Savini D, Occhipinti-Ambrogi A, Marchini A, et al (2010) The top 27 animal alien species introduced
21 into Europe for aquaculture and related activities. *J Appl Ichthyol* 26:1–7.
- 22 Serrano L, Reina M, Martín G, et al (2006) The aquatic systems of Doñana (SW Spain): watersheds
23 and frontiers. *Limnética* 25:11–32.
- 24 Simon KS, Townsend CR (2003) Impacts of freshwater invaders at different levels of ecological
25 organisation, with emphasis on salmonids and ecosystem consequences. *Freshw Biol* 48:982–
26 994.
- 27 Simonis JL (2013) Predator ontogeny determines trophic cascade strength in freshwater rock pools.
28 *Ecosphere* 4:1–25.
- 29 Strauss SY, Webb CO, Salamin N (2006) Exotic taxa less related to native species are more invasive.
30 *Proc Natl Acad Sci USA* 103:5841–5.
- 31 Strayer DL (2012) Eight questions about invasions and ecosystem functioning. *Ecol Lett* 15:1199–
32 210.
- 33 Syväranta J, Lensu A, Marjomäki TJ, et al (2013) An empirical evaluation of the utility of convex hull
34 and standard ellipse areas for assessing population niche widths from stable isotope data. *PLoS*
35 *One* 8:e56094.
- 36 Tilman D (1982) Resource competition and community structure. In: Princeton University Press NJ
37 (ed)
- 38 Tobler M (2008) Divergence in trophic ecology characterizes colonization of extreme habitats. *Biol J*
39 *Linn Soc* 95:517–528.
- 40 Trudeau V, Rasmussen JB (2003) The effect of water velocity on stable carbon and nitrogen isotope
41 signatures of periphyton. *Limnol. Oceanogr.* 48:2194: 2199.
- 42 Turner TF, Collyer ML, Krabbenhoft TJ (2010) A general hypothesis-testing framework for stable
43 isotope ratios in ecological studies. *Ecology* 91:2227–33.
- 44 Van De Meutter F, Trekels H, Green AJ, Stoks R (2010) Is salinity tolerance the key to success for the
45 invasive water bug *Trichocorixa verticalis*? *Hydrobiologia* 649:231–238.
- 46 Vander Zanden JM, Rasmussen JB (2001) Variation in $\delta^{15}\text{N}$ and $\delta^{13}\text{C}$ trophic fractionation :
47 Implications for aquatic food web studies. *Limnol Oceanogr* 46:2061–2066.
- 48 Velasco J, Millán A, Hernández J, Gutiérrez C, Abellán P, Sánchez D, Ruiz M (2006). Response of
49 biotic communities to salinity changes in a Mediterranean hypersaline stream. *Saline Systems* 2:
50 1-15.
- 51 Vilà M, Basnou C, Pyšek P, et al (2010) How well do we understand the impacts of alien species on
52 ecosystem services? A pan-European, cross-taxa assessment. *Front Ecol Environ* 8:135–144.
- 53 Vilà M, Weiner J (2004) Are invasive plant species better competitors than native plant species?
54 evidence from pair-wise experiments. *Oikos* 105:229–238.

1 Vitousek PM, D'Antonio CM, Loope L, et al (1997) Introduced species: a significant component of
2 human-caused global environmental change. *N Z J Ecol* 21:1–16.
3 Walton MEM, Vilas C, Coccia C, Green AJ, Cañavate JP, Prieto A, van Bergeijk SA, Medialdea JM,
4 Kennedy H, King J, Le Vay L (2015). The effect of water management on extensive aquaculture
5 food webs in the reconstructed wetlands of the Doñana Natural Park, Southern Spain.
6 *Aquaculture* 448: 451–463.
7 Wurtsbaugh WA (1992) Food-web modification by an invertebrate predator in the Great Salt Lake
8 (USA). *Oecologia* 89:168–175.
9 Zambrano L, Valiente E, Jake Vander Zanden M (2010) Stable isotope variation of a highly
10 heterogeneous shallow freshwater system. *Hydrobiologia* 646:327–336.
11
12

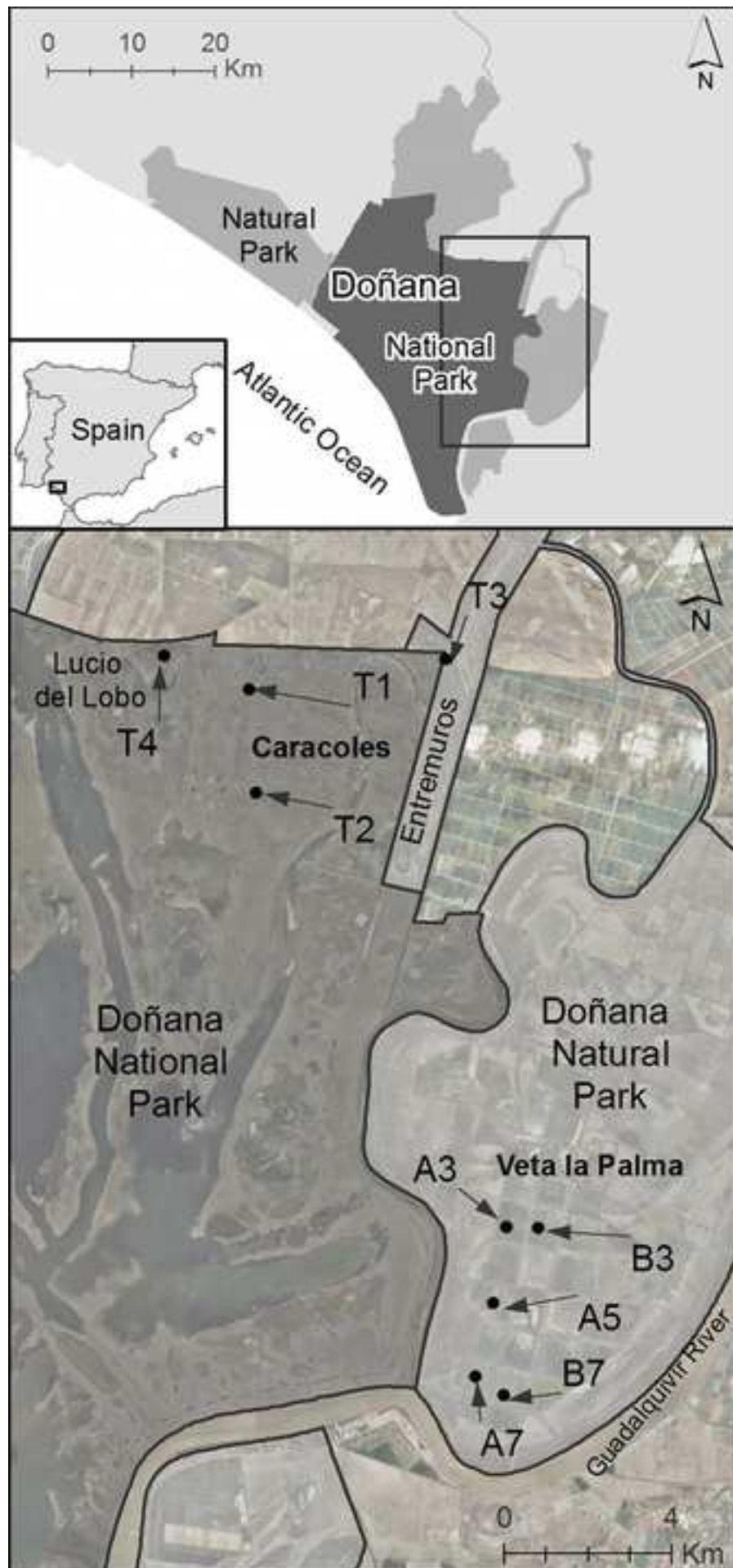
1 FIGURE

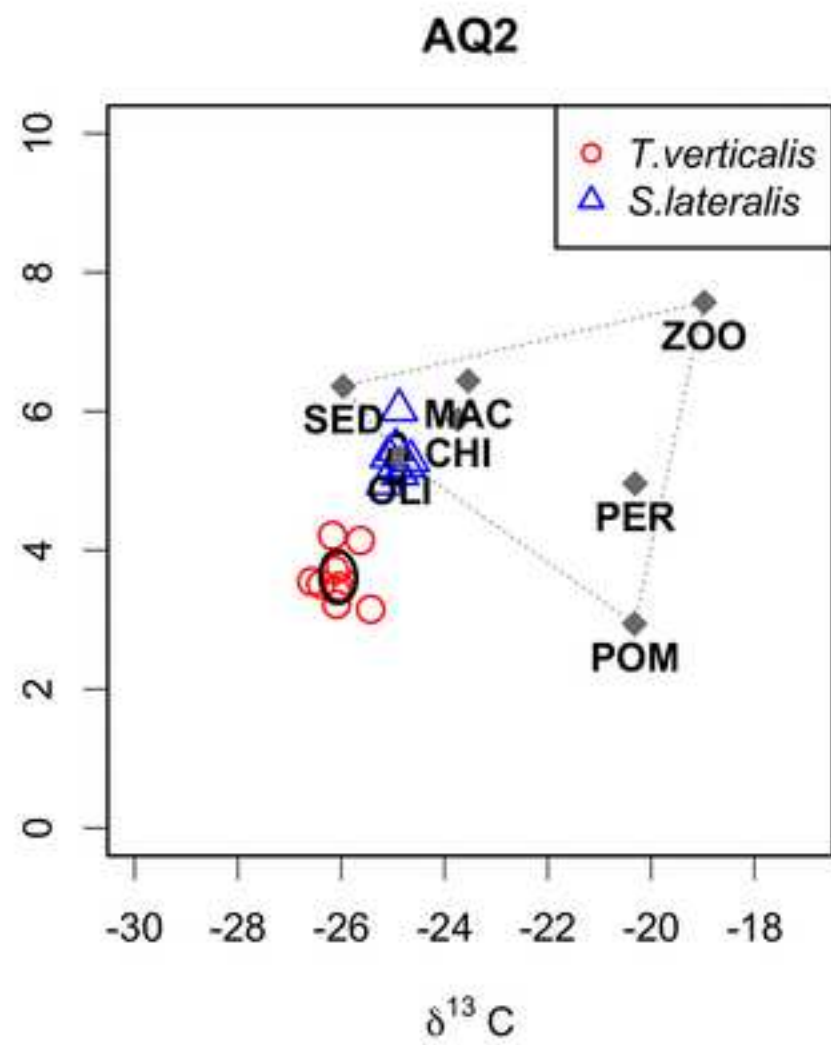
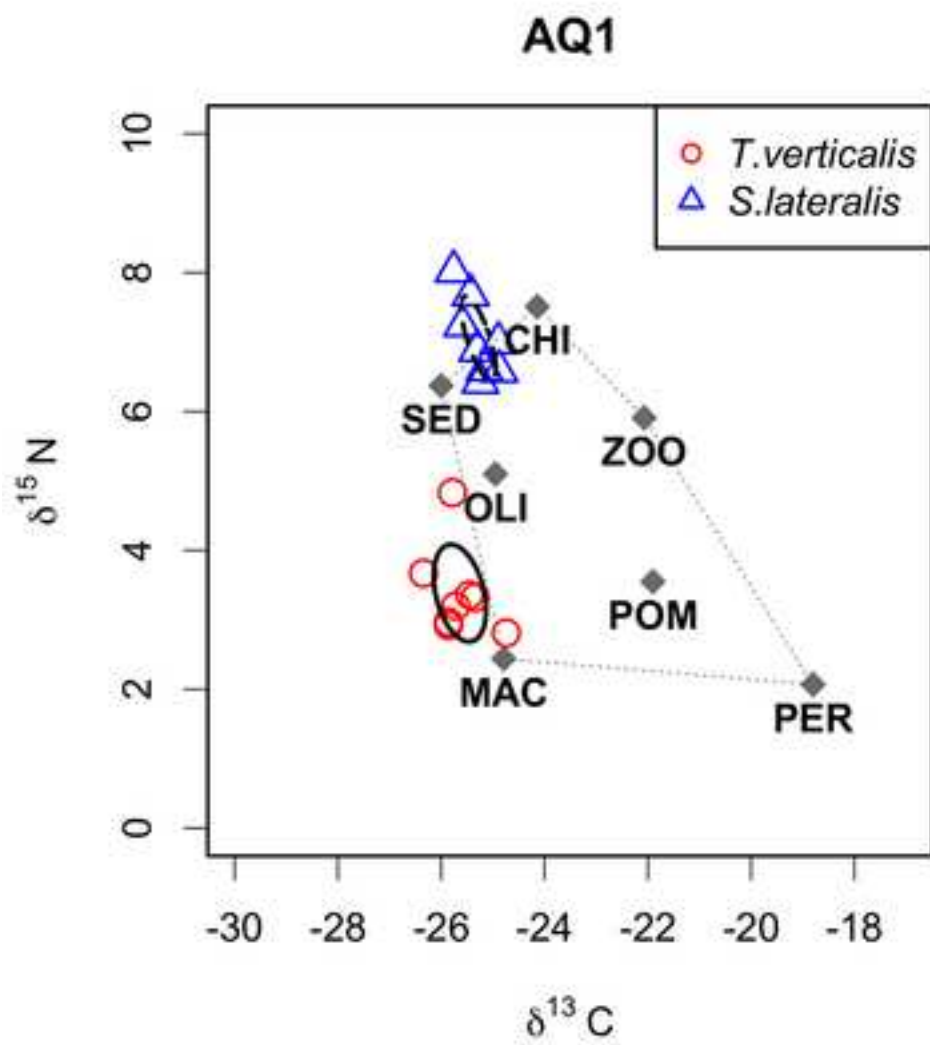
2 Fig. 1 Map of the sampling sites in Doñana. The dark grey area in the upper figure
3 indicates Doñana National Park and the light grey area indicates Doñana Natural Park.
4 Five permanent ponds are labelled in Veta la Palma estate, and four temporary sites are
5 labelled in and around the Caracoles estate.

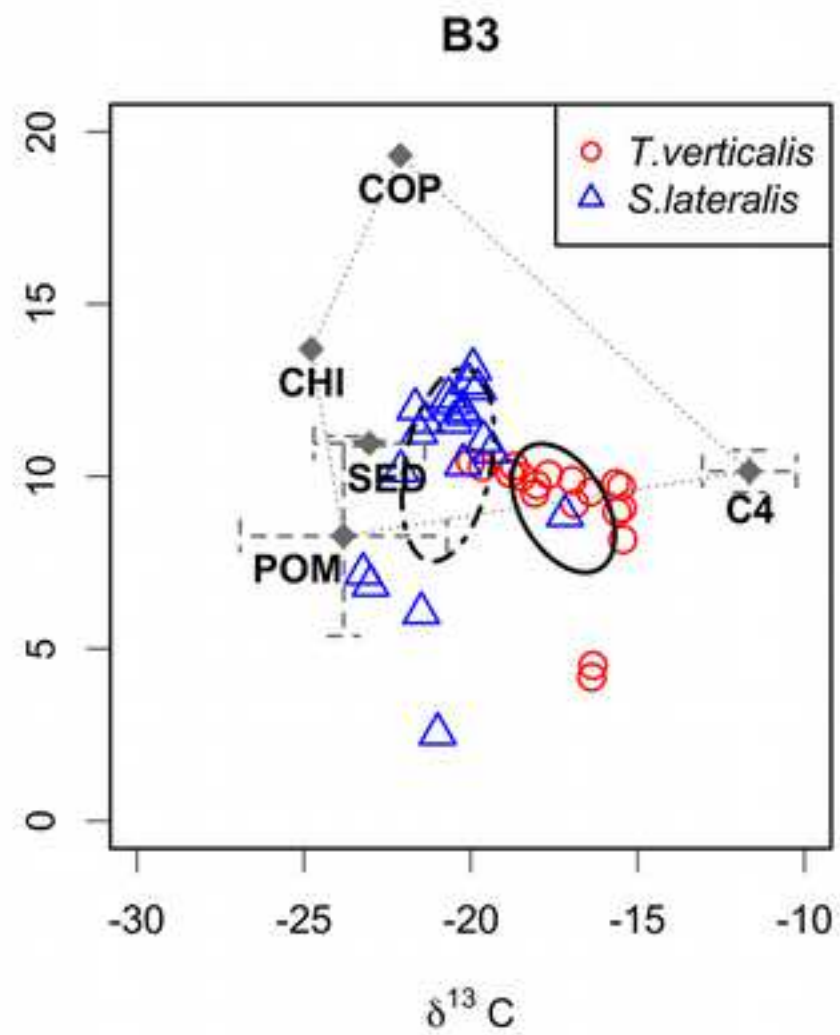
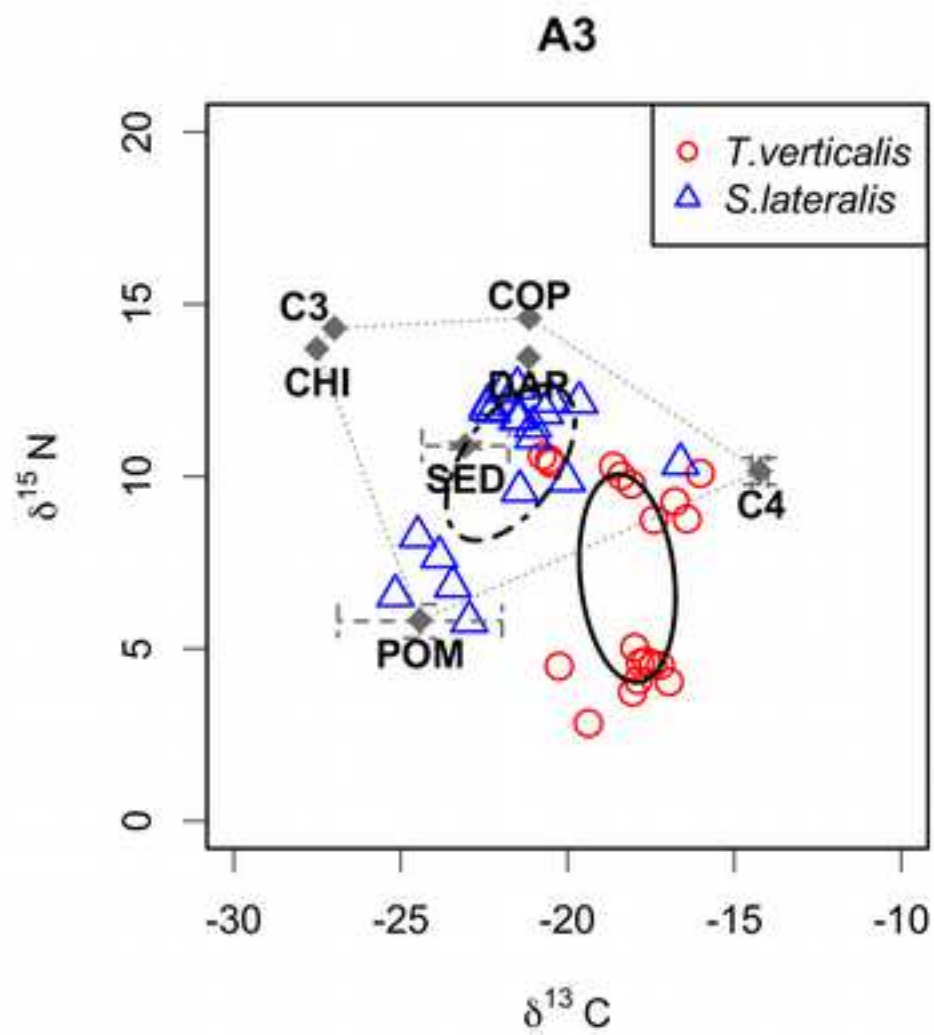
6
7
8
9
10 Fig. 2 Dual-isotope food web diagram of two aquaria (AQ1 and AQ2) including Standard
11 ellipses (solid line = *T. verticalis*; dot-dashed line = *S. lateralis*) showing differences in *T.*
12 *verticalis* and *S. lateralis* isotope values. Food web components: CHI = chironomidae;
13 PER = periphyton; POM = particulate organic matter; OLI = oligochaeta; MAC =
14 macrophytes; SED = sediments; ZOO = zooplankton. Dotted lines represent the mixing
15 polygons circumscribed by the isotopic signature of several resources (mean $\delta^{13}\text{C}$ and $\delta^{15}\text{N}$).
16 Corixid $\delta^{13}\text{C}$ and $\delta^{15}\text{N}$ values were corrected for trophic enrichment.

17
18
19
20
21 Fig. 3 Dual-isotope food web diagram of two permanent ponds (A3 and B3) showing the
22 Standard ellipse area (SEAc) of *T. verticalis* (solid line) and *S. lateralis* (dot-dashed line).
23 CHI = chironomidae; COP = copepods; DAP = *Daphnia* sp.; POM = particulate organic
24 matter, SED = sediments; C3 = *Phragmites* sp.; C4 = *Ruppia* sp.; *Spartina* sp.; and
25 *Potamogeton pectinatus*. Dotted lines represent the mixing polygons circumscribed by the
26 isotopic signature of several resources (mean $\delta^{13}\text{C}$ and $\delta^{15}\text{N} \pm \text{SD}$). Corixid $\delta^{13}\text{C}$ and $\delta^{15}\text{N}$
27 values were corrected for trophic enrichment.

28
29
30
31
32
33 Fig. 4 Dual-isotope food web diagram of 4 temporary waterbodies (T1–T4) showing the
34 Standard ellipse area (SEAc) of *T. verticalis* (solid line), *S. lateralis* (dot-dashed line) and
35 *S. scripta* (dotted line). ALG = filamentous algae; CHI = chironomidae; POM =
36 particulate organic matter; SCI = *Scirpus* sp.; PER = periphyton; SED = sediments; RUP =
37 *Ruppia* sp.; SCR = *Scirpus* sp. + *Ruppia* sp. Dotted lines represent the mixing polygon
38 circumscribed by the isotopic signature of several resources (mean $\delta^{13}\text{C}$ and $\delta^{15}\text{N} \pm \text{SD}$).
39 Corixid $\delta^{13}\text{C}$ and $\delta^{15}\text{N}$ values were corrected for trophic enrichment.







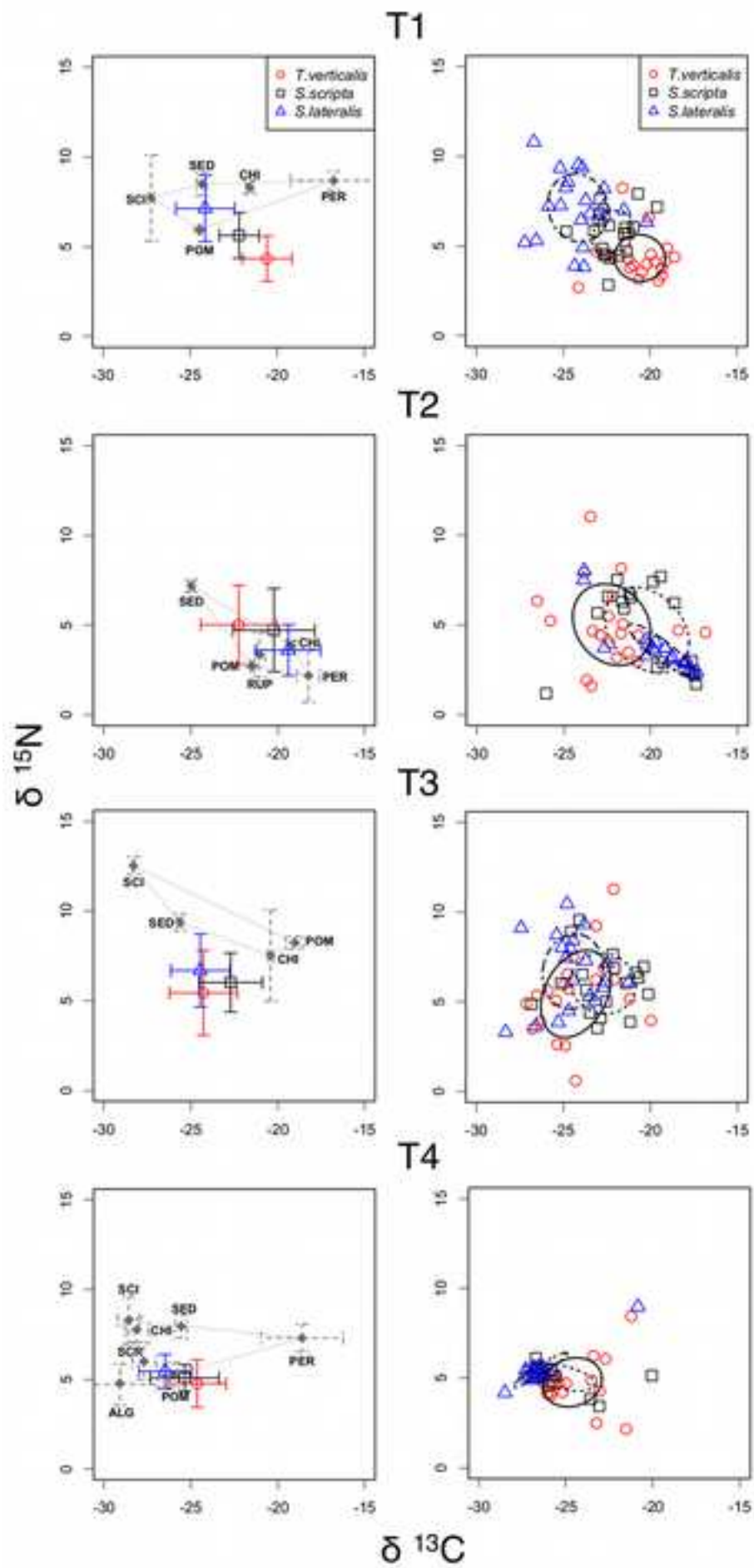


Table 1 Stable isotope values (mean \pm SD) and % of Carbon and Nitrogen (mean \pm SD) of *T. verticalis* (TV), *S. lateralis* (SL) and *S. scripta* (SS) in the aquaria (AQ1, AQ2), permanent ponds (A3, B3) and temporary waters (T1-T4).

Sites	Species	<i>n</i>	$\delta^{13}\text{C} \pm \text{SD}$	% C \pm SD	$\delta^{15}\text{N} \pm \text{SD}$	% N \pm SD
AQ1	TV	8	-25.1 \pm 0.5	48.7 \pm 0.7	5.7 \pm 0.6	11.1 \pm 0.2
	SL	8	-24.8 \pm 0.3	49.4 \pm 0.9	9.3 \pm 0.6	10.8 \pm 0.2
AQ2	TV	10	-25.5 \pm 0.3	46.3 \pm 0.7	5.9 \pm 0.3	11.4 \pm 0.1
	SL	8	-24.4 \pm 0.2	44.9 \pm 1.7	7.6 \pm 0.3	10.9 \pm 0.1
A3	TV	20	-16.7 \pm 1.4	55.8 \pm 1.1	11.4 \pm 2.9	10.6 \pm 0.6
	SL	20	-21.2 \pm 1.9	55.5 \pm 1.7	12.7 \pm 2.2	10.6 \pm 0.7
B3	TV	18	-17.7 \pm 1.5	55.9 \pm 1.9	9.3 \pm 1.8	11.1 \pm 0.7
	SL	20	-20.2 \pm 1.3	57.3 \pm 1.6	12.6 \pm 2.7	10.8 \pm 0.7
T1	TV	20	-20.1 \pm 1.4	47.9 \pm 6.0	6.6 \pm 1.3	12.1 \pm 2.4
	SL	21	-23.6 \pm 1.7	38.2 \pm 5.9	9.4 \pm 1.8	16.8 \pm 1.8
	SS	19	-21.6 \pm 1.1	39.2 \pm 1.9	7.9 \pm 1.3	15.5 \pm 1.8
T2	TV	20	-21.7 \pm 2.2	40.1 \pm 1.4	7.3 \pm 2.2	14.9 \pm 0.9
	SL	23	-18.9 \pm 1.9	46.7 \pm 1.8	5.9 \pm 1.4	11.0 \pm 0.4
	SS	18	-19.8 \pm 2.3	49.3 \pm 2.3	7.0 \pm 2.3	10.6 \pm 1.0
T3	TV	20	-23.8 \pm 2.0	39.4 \pm 0.7	7.7 \pm 2.4	15.1 \pm 0.8
	SL	20	-23.9 \pm 1.8	39.3 \pm 2.1	8.9 \pm 2.6	15.5 \pm 1.1
	SS	18	-22.2 \pm 1.7	37.5 \pm 4.5	8.3 \pm 2.0	15.7 \pm 1.2
T4	TV	19	-24.1 \pm 1.7	49.9 \pm 3.9	7.1 \pm 1.3	10.8 \pm 0.7
	SL	18	-25.9 \pm 1.5	49.5 \pm 3.7	7.7 \pm 0.9	11.2 \pm 0.5
	SS	13	-24.9 \pm 2.0	49.6 \pm 1.7	7.4 \pm 0.7	10.6 \pm 0.9

Local names for these sites are as follows: T1 = 9N3PP; T2 = AC3; T3 = Entremuros; T4 = Lucio del Lobo (see Frisch et al. 2012 for details). See Fig. 1 for location.

Table 2 Summary of niche width analyses based on Bayesian tools showing the Isotopic space (SEAc) inhabited by *T. verticalis* (TV), *S. lateralis* (SL) and *S. scripta* (SS), the Bayesian probability that the isotopic space (SEAc) of one species was smaller than that of the other species, and the proportional SEAc overlap. Sample sizes (n) are reported for each species in each aquaria (AQ1, AQ2) and temporary ponds (T1-T4). Asterisks indicate significant differences between SEAc values.

Sites	n			SEAc (‰ ²)			Bayesian probability (%)			SEAc overlap (%)		
	TV	SL	SS	TV	SL	SS	TV- SL	TV- SS	SS- SL	TV- SL	TV- SS	SS- SL
AQ1	8	8	/	1.04	0.43	/	32	/	/	0	/	/
AQ2	10	8	/	0.19	0.40	/	52	/	/	0	/	/
T1	20	21	19	5.93	10.34	4.73	96*	25	99*	0	5	4
T2	20	23	18	15.67	3.88	17.36	0*	61	0*	5	23	15
T3	20	20	18	14.54	11.38	9.94	22	12	67	31	24	18
T4	19	18	13	7.26	1.45	4.31	0.09*	10	4*	0.16	27	12

Table 3 P values for comparison of mean centroid position between *T. verticalis* (TV), *S. lateralis* (SL) and *S. scripta* (SS) in the aquaria (AQ1, AQ2), permanent ponds (A3, B3) and temporary ponds (T1-T4) according to the methodology developed by Turner, et al. (2010). Significant differences are indicated by asterisks.

Sites	Species comparison		
	TV-SL	TV-SS	SS-SL
AQ1	0.001*	/	/
AQ2	0.001*	/	/
A3	0.001*	/	/
B3	0.001*	/	/
T1	0.001*	0.001*	0.001*
T2	0.001*	0.008*	0.084
T3	0.106	0.018*	0.008*
T4	0.001*	0.297	0.073

Journal Name

Aquatic Sciences

Title

Niche partitioning between invasive and native corixids (Hemiptera, Corixidae) in south-west Spain.

Authors

Cristina Coccia^{1*}, Brian Fry², Francisco Ramírez³, Luz Boyero^{1,4,5}, Stuart E. Bunn²,
Carmen Diz-Salgado¹, Mark Walton⁶, Lewis Le Vay⁶ and Andy J. Green¹

¹Department of Wetland Ecology, Doñana Biological Station (EBD-CSIC), Américo Vespucio s/n, 41092 Seville, Spain

²Australian Rivers Institute, Griffith University, Nathan, Queensland, Australia, 4111

³Department of Biological Conservation, Doñana Biological Station (EBD-CSIC), Américo Vespucio s/n, 41092 Seville, Spain

⁴Present address: Faculty of Science and Technology, University of the Basque Country (UPV/EHU), Leioa, Spain

⁵Present address: IKERBASQUE, Basque Foundation for Science, Bilbao, Spain

⁶Centre for Applied Marine Sciences, Bangor University, Wales, UK

*Corresponding author: *coccia@ebd.csic.es*

Online Resource 1 Salinity and Chlorophyll *a* variation in temporary (T) and permanent waterbodies (A-B) across seasons.

Sites	Season	Chl <i>a</i> ($\mu\text{g l}^{-1}$)	Salinity (psu)
T1	summer	36.4	7.6
T2	summer	105.5	15.9
T3	summer	44.6	8.7
T4	summer	76.7	5.4
A3	summer	55.5	9.1
B3	summer	145.5	9.3
A7	summer	155.0	19.8
B7	summer	135	18.6
A5	summer	157.0	8.7
A7	winter	23.7	18.3
B7	winter	53.7	11.6
A5	winter	15.5	10.9

1
2
3
4
5
6
7
8
9
10
11
12
13
14
15
16
17
18
19
20
21
22
23
24
25
26
27
28
29
30
31
32
33
34
35
36
37
38
39
40
41
42
43
44
45
46
47
48
49
50
51
52
53
54
55
56
57
58
59
60
61
62
63
64
65

Journal Name

Aquatic Sciences

Title

Niche partitioning between invasive and native corixids (Hemiptera, Corixidae) in south-west Spain.

Authors

Cristina Coccia^{1*}, Brian Fry², Francisco Ramírez³, Luz Boyero^{1,4,5}, Stuart E. Bunn²,
Carmen Diz-Salgado¹, Mark Walton⁶, Lewis Le Vay⁶ and Andy J. Green¹

¹Department of Wetland Ecology, Doñana Biological Station (EBD-CSIC), Américo Vespucio s/n, 41092 Seville, Spain

²Australian Rivers Institute, Griffith University, Nathan, Queensland, Australia, 4111

³Department of Biological Conservation, Doñana Biological Station (EBD-CSIC), Américo Vespucio s/n, 41092 Seville, Spain

⁴Present address: Faculty of Science and Technology, University of the Basque Country (UPV/EHU), Leioa, Spain

⁵Present address: IKERBASQUE, Basque Foundation for Science, Bilbao, Spain

⁶Centre for Applied Marine Sciences, Bangor University, Wales, UK

*Corresponding author: *coccia@ebd.csic.es*

Online Resource 2 Sampling methodology used across temporary and permanent waterbodies.

Species	Sampling methods
Corixids (adults and juveniles)	D-framed pond net (500 µm mesh; 16 × 16 cm)
Benthos	D-framed pond net (500 µm mesh; 16 × 16 cm) Cylindrical (32 cm ²) cores. Box (240 cm ²) cores.
Zooplankton	Tows (200 µm and 500 µm sizes). Concentrated in laboratory on a 64 µm mesh
Mysidacea	Fixed traps (Fyke type, funnel-mouthed bags trap) with three mesh sizes: 2 mm, 5 mm and 10 mm.
Macrophytes	Collected by hand from the water's edge and in the lagoon
Epiphyton (periphyton on macrophytes)	Submerged part of plants were brushed with a toothbrush, then vigorously shaken in distilled water
Epilithon (periphyton on hard substrates)	Jar lids were brushed with a toothbrush, then vigorously shaken in distilled water
Sediments (i.e. epipelon)	Benthic corer (top 5 mm)

1
2
3
4
5
6
7
8
9
10
11
12
13
14
15
16
17
18
19
20
21
22
23
24
25
26
27
28
29
30
31
32
33
34
35
36
37
38
39
40
41
42
43
44
45
46
47
48
49
50
51
52
53
54
55
56
57
58
59
60
61
62
63
64
65

Journal Name

Aquatic Sciences

Title

Niche partitioning between invasive and native corixids (Hemiptera, Corixidae) in south-west Spain.

Authors

Cristina Coccia^{1*}, Brian Fry², Francisco Ramírez³, Luz Boyero^{1,4,5}, Stuart E. Bunn²,
Carmen Diz-Salgado¹, Mark Walton⁶, Lewis Le Vay⁶ and Andy J. Green¹

¹Department of Wetland Ecology, Doñana Biological Station (EBD-CSIC), Américo Vespucio s/n, 41092 Seville, Spain

²Australian Rivers Institute, Griffith University, Nathan, Queensland, Australia, 4111

³Department of Biological Conservation, Doñana Biological Station (EBD-CSIC), Américo Vespucio s/n, 41092 Seville, Spain

⁴Present address: Faculty of Science and Technology, University of the Basque Country (UPV/EHU), Leioa, Spain

⁵Present address: IKERBASQUE, Basque Foundation for Science, Bilbao, Spain

⁶Centre for Applied Marine Sciences, Bangor University, Wales, UK

*Corresponding author: coccia@ebd.csic.es

Online Resource 3 Standards used at UC Davis and at LIE laboratory. The internal standards used by each laboratory (labelled in italics) include measured values. These internal standards have been previously calibrated against international standards (labelled in normal font).

	$\delta^{13}\text{C}$ (‰VPDB)	% C	$\delta^{15}\text{N}$ (‰Air)	% N
UC Davis				
<i>Bovine Liver</i>	-21.69		7.72	
<i>Nylon</i>	-27.81	40.81	-9.77	
<i>Peach leaves</i>	-26.12	46.18	1.95	2.88
IAEA-N-1 Ammonium sulphate			+0.4 ± 0.2	
IAEA-N-2 Ammonium sulphate			+20.3 ± 0.2	
IAEA-N-3 Potassium nitrate			+4.7 ± 0.2	
USGS-40 L Glutamic Acid	-26.39 ± 0.04		-4.5 ± 0.1	
USGS-41 L Glutamic Acid	+37.63 ± 0.05		+47.6 ± 0.2	
LIE (EBD-CSIC)				
<i>EBD-23 Cow Horn</i>	-22.49 ± 0.12		9.94 ± 0.14	
<i>LIE-BB Whale Baleen</i>	-22.48		9.92	
<i>LIE-PA Feathers of Razorbill</i>	-15.72 ± 0.08		16.55 ± 0.2	
<i>LIE-P 22 Protein</i>	26.98 ± 0.13		5.94	
EEZ-20 Saccharose	-12.26			
IAEA-600 Caffeine	-27.77 ± 0.04		+1.0 ± 0.2	
IAEA-N-2 Ammonium sulphate			+20.3 ± 0.2	
USGS-40 L Glutamic Acid	-26.39 ± 0.04		-4.5 ± 0.1	

Journal Name

Aquatic Sciences

Title

Niche partitioning between invasive and native corixids (Hemiptera, Corixidae) in south-west Spain.

Authors

Cristina Coccia^{1*}, Brian Fry², Francisco Ramírez³, Luz Boyero^{1,4,5}, Stuart E. Bunn²,
Carmen Diz-Salgado¹, Mark Walton⁶, Lewis Le Vay⁶ and Andy J. Green¹

¹Department of Wetland Ecology, Doñana Biological Station (EBD-CSIC), Américo Vespucio s/n, 41092 Seville, Spain

²Australian Rivers Institute, Griffith University, Nathan, Queensland, Australia, 4111

³Department of Biological Conservation, Doñana Biological Station (EBD-CSIC), Américo Vespucio s/n, 41092 Seville, Spain

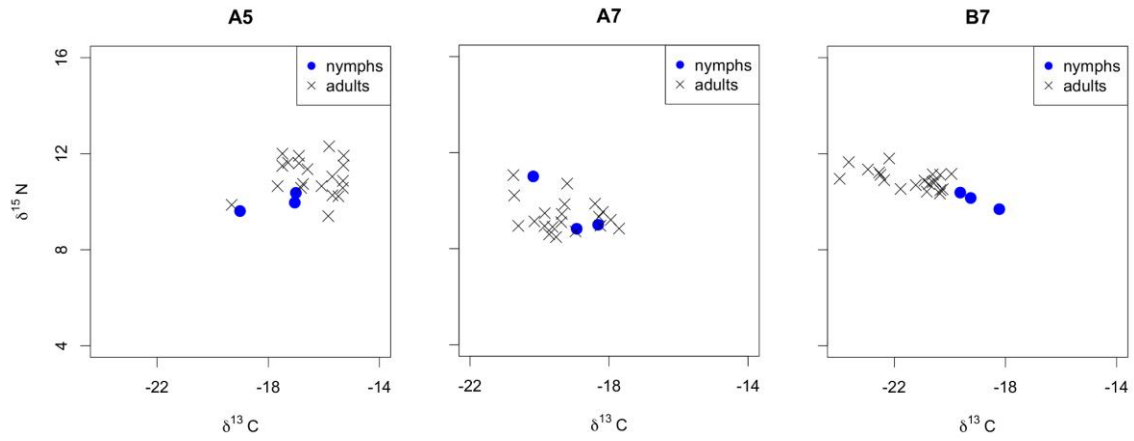
⁴Present address: Faculty of Science and Technology, University of the Basque Country (UPV/EHU), Leioa, Spain

⁵Present address: IKERBASQUE, Basque Foundation for Science, Bilbao, Spain

⁶Centre for Applied Marine Sciences, Bangor University, Wales, UK

*Corresponding author: *coccia@ebd.csic.es*

Online Resource 4 Dual-isotope food web diagram within three permanent ponds (A5, A7 and B7) illustrating isotopic differences in *T. verticalis* adults and nymphs during winter.



1
2
3
4
5
6
7
8
9
10
11
12
13
14
15
16
17
18
19
20
21
22
23
24
25
26
27
28
29
30
31
32
33
34
35
36
37
38
39
40
41
42
43
44
45
46
47
48
49
50
51
52
53
54
55
56
57
58
59
60
61
62
63
64
65

Journal Name

Aquatic Sciences

Title

Niche partitioning between invasive and native corixids (Hemiptera, Corixidae) in south-west Spain.

Authors

Cristina Coccia^{1*}, Brian Fry², Francisco Ramírez³, Luz Boyero^{1,4,5}, Stuart E. Bunn²,
Carmen Diz-Salgado¹, Mark Walton⁶, Lewis Le Vay⁶ and Andy J. Green¹

¹Department of Wetland Ecology, Doñana Biological Station (EBD-CSIC), Américo Vespucio s/n, 41092 Seville, Spain

²Australian Rivers Institute, Griffith University, Nathan, Queensland, Australia, 4111

³Department of Biological Conservation, Doñana Biological Station (EBD-CSIC), Américo Vespucio s/n, 41092 Seville, Spain

⁴Present address: Faculty of Science and Technology, University of the Basque Country (UPV/EHU), Leioa, Spain

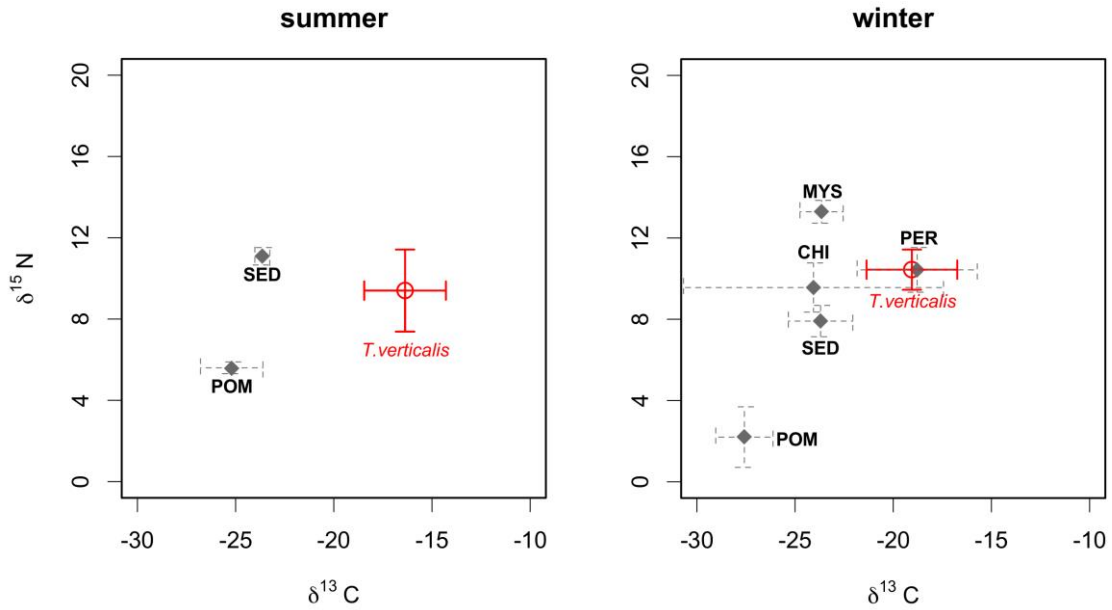
⁵Present address: IKERBASQUE, Basque Foundation for Science, Bilbao, Spain

⁶Centre for Applied Marine Sciences, Bangor University, Wales, UK

*Corresponding author: *coccia@ebd.csic.es*

1
2
3
4
5
6
7
8
9
10
11
12
13
14
15
16
17
18
19
20
21
22
23
24
25
26
27
28
29
30
31
32
33
34
35
36
37
38
39
40
41
42
43
44
45
46
47
48
49
50
51
52
53
54
55
56
57
58
59
60
61
62
63
64
65

Online Resource 5 Dual-isotope food web diagram of three permanent ponds (A5, A7 and B7) illustrating isotopic seasonal and spatial variation in *T. verticalis* and common food web components: CHI = chironomids; PER = periphyton; POM = particulate organic matter; MYS = *Mesopodopsis slabberi*; SED = sediments.



1 **Journal Name**

2 Aquatic Sciences

3
4
5 3

6
7 **4 Title**

8
9 5 Niche partitioning between invasive and native corixids (Hemiptera, Corixidae) in south-west
10 Spain.
11 6

12
13 7

14
15
16 **8 Authors**

17 9 Cristina Coccia^{1*}, Brian Fry², Francisco Ramírez³, Luz Boyero^{1,4,5}, Stuart E. Bunn², Carmen
18 Diz-Salgado¹, Mark Walton⁶, Lewis Le Vay⁶ and Andy J. Green¹
19
20 10

21
22
23 11 ¹Department of Wetland Ecology, Doñana Biological Station (EBD-CSIC), Américo
24 Vespucio s/n, 41092 Seville, Spain

25
26 12 ²Australian Rivers Institute, Griffith University, Nathan, Queensland, Australia, 4111

27 13 ³Department of Biological Conservation, Doñana Biological Station (EBD-CSIC), Américo
28 Vespucio s/n, 41092 Seville, Spain

29 14 ⁴Present address: Faculty of Science and Technology, University of the Basque Country
30 (UPV/EHU), Leioa, Spain

31 15 ⁵Present address: IKERBASQUE, Basque Foundation for Science, Bilbao, Spain

32 16 ⁶Centre for Applied Marine Sciences, Bangor University, Wales, UK

33
34
35 20

36 17
37 18
38 19
39 20
40 21
41 22
42 23
43 24
44 25
45 26
46 27
47 28
48 29
49 30
50 31
51 32
52 33
53
54
55
56
57
58
59
60
61
62
63
64
65

34 Online Resource 6 Range of stable isotope values of source items ($n = 3$) in 4 temporary
 35 waters: PER = periphyton; POM = particulate organic matter; SCI = *Scirpus* sp.; RUP =
 36 *Ruppia* sp.; SCR = *Scirpus* sp. root; ALG = filamentous algae; CHI = chironomids; SED =
 37 sediments.
 38
 39
 40

Sites	Source	Range	
		$\delta^{13}\text{C}$	$\delta^{15}\text{N}$
T1	PER	-19.1 to -14.1	8.1 to 9.0
	POM	-24.5 to -24.3	5.8 to 6.0
	SCI	-27.4 to -27.0	5.0 to 9.7
	CHI	-21.8 to -21.4	7.9 to 8.7
	SED	-24.7 to -24.1	7.8 to 9.0
T2	PER	-18.6 to -17.5	1.2 to 3.9
	POM	-21.6 to -21.4	2.7 to 2.8
	RUP	-21.3 to -20.7	2.3 to 4.7
	CHI	-19.5 to -19.1	3.7 to 4.2
	SED	-25.1 to -24.8	6.9 to 7.5
T3	POM	-19.4 to -18.5	7.9 to 8.6
	SCI	-28.3 to -28.2	12.0 to 13.0
	CHI	-20.5 to -20.2	4.6 to 9.0
	SED	-25.8 to -25.5	9.5 to 9.8
T4	PER	-21.0 to -16.3	6.7 to 8.1
	POM	-26.1 to -25.7	4.7 to 6.0
	ALG	-31.3 to -26.9	3.9 to 6.1
	SCI	-29.3 to -28.1	7.3 to 9.8
	SCR	-28.5 to -27.1	4.9 to 6.9
	CHI	-28.6 to -27.3	7.2 to 8.5
	SED	-25.9 to -25.2	7.6 to 8.7

41

42

43

1
2
3
4
5
6
7
8
9
10
11
12
13
14
15
16
17
18
19
20
21
22
23
24
25
26
27
28
29
30
31
32
33
34
35
36
37
38
39
40
41
42
43
44
45
46
47
48
49
50
51
52
53
54
55
56
57
58
59
60
61
62
63
64
65