

Turning potential into action: Using pluripotent stem cells to understand heart development and function in health and disease

Author

Fonoudi, Hananeh, Bosman, Alexis

Published

2017

Journal Title

Stem Cells Translational Medicine

Version

Version of Record (VoR)

DOI

[10.1002/sctm.16-0476](https://doi.org/10.1002/sctm.16-0476)

Rights statement

© The Author(s) 2017 published by Wiley Periodicals, Inc. on behalf of AlphaMed Press. This is an open access article under the terms of the Creative Commons Attribution License, which permits use, distribution and reproduction in any medium, provided the original work is properly cited.

Downloaded from

<http://hdl.handle.net/10072/347432>

Griffith Research Online

<https://research-repository.griffith.edu.au>

Turning Potential Into Action: Using Pluripotent Stem Cells to Understand Heart Development and Function in Health and Disease

Hananeh Fonoudi, Alexis Bosman



The advertisement banner features a dark blue background with a light green horizontal bar at the bottom. On the left, there is a partial view of a white laboratory instrument. The text is centered and reads: "You Don't Need Reproducible Research UNTIL YOU DO." in white, with "UNTIL YOU DO." in a larger font. Below this, the light green bar contains the text "Minimize uncertainty with PHCbi brand products" in white. On the right side of the banner is the PHCbi logo, which consists of the letters "phc" in blue and "bi" in red.



Turning Potential Into Action: Using Pluripotent Stem Cells to Understand Heart Development and Function in Health and Disease

HANANEH FONOUDI,^a ALEXIS BOSMAN^b

^aDevelopmental and Stem Cell Biology Division, Victor Chang Cardiac Research Institute, Sydney, Australia; ^bGriffith University School of Medicine, Gold Coast, Queensland, Australia

SUMMARY

Pluripotent stem cells hold enormous potential for regenerative therapies, however their ability to provide insight into early human development and the origins of disease could arguably provide an even greater outcome. This is primarily due to their contribution to the establishment of a powerful knowledge base of human development, something which all researchers and clinicians can potentially benefit from. Modeling human heart development and disease using pluripotent stem cells has already provided many important insights into cardiogenesis and cardiovascular disease mechanisms however, it is important to be aware of the complexities of this model system. Thorough contemplation of experimental models and specialized techniques is required to provide high-quality evidence of the intricacies of both normal early development, and when this process goes awry in disease states. *STEM CELLS TRANSLATIONAL MEDICINE* 2017;6:1452–1457

SIGNIFICANCE STATEMENT

This Perspective article provides a brief overview of the current and potential uses of pluripotent stem cells for investigating early development of the human heart in both health and in disease states. Additionally, it provides guidance and insight into the complexities of establishing pluripotent stem cell models to probe early cardiogenesis and cardiovascular disease.

“Heart and Brain are the two lords of life. In the metaphors of ordinary speech and in the stricter language of science, we use these terms to indicate two central powers, from which all motives radiate, to which all influences converge.”

— George Henry Lewes

our understanding of how the heart develops and functions, both

INTRODUCTION

Understanding early human development is a complicated and technically difficult process. The formation of a complex biological organism such as a human is the result of a plethora of intricate cellular mechanisms and biochemical processes interacting in time and space to form a highly sophisticated entity with multiple systems, organs, and intermediate structures. Further, understanding the development of the heart is of great interest not only for developmental biologists, but also for those studying diseases resulting in structural or functional cardiovascular deficits, and those treating individuals with these deficits. According to the World Health Organization, cardiovascular disease is the leading cause of death globally [1], therefore it is imperative we increase

under normal physiological conditions, as well as in diseased states.

When attempting to examine organogenesis in humans, it is particularly difficult to uncover the pathways involved in this complex process due to technical difficulties and ethical concerns associated with human-based research. Further, because of these limitations there is—justifiably—restricted availability of human tissue available for scientific purposes, even though access to this material would help to unlock the secrets of early development. In 1981, a discovery was made which changed the way we looked at mammalian development-pluripotent cells were “born.” First discovered as embryonic stem cells in mouse [2], this was then controversially mimicked in humans [3], and heralded a new era

Correspondence: Alexis Bosman, Ph.D., Griffith University School of Medicine, Gold Coast, Queensland, Australia.
e-mail: alexis.bosman@griffithuni.edu.au

Received 29 November 2016; accepted for publication 24 February 2017; published Online First on March 24, 2017. ©AlphaMed Press 1066-5099/2016/\$20.00/0; <http://dx.doi.org/10.1002/sctm.16-0476>

This is an open access article under the terms of the Creative Commons Attribution License, which permits use, distribution and reproduction in any medium, provided the original work is properly cited.

in developmental biology. However, as they say, necessity is the mother of invention, and pluripotent stem cells were then sensationally reinvented in 2007 as the universally ethically acceptable induced pluripotent stem cells (iPSC) [4]. The appeal of pluripotent stem cells (PSC) was not lost on any who understood their potential—cells which have the infinite capability to produce the plethora of cell types found in the human body. Since then, the concept of a “make-your-own cure” to degenerative diseases has been the twinkle in the eye of the public, clinicians and stem cell researchers alike. It is important however, to realize the even greater potential of these cells—uncovering the intricacies of human development to create a developmental knowledge base for all to benefit from. Therefore, human PSC (hPSC) have become a powerful tool in allowing researchers to examine early human development, circumventing the need for primary tissues [5–7]. In this Perspective article, we will briefly discuss what is known about normal heart development and the different factors involved in early cardiogenesis and how hPSC can help us to better understand this process. Current *in vitro* uses for hPSC-CMs are addressed along with the clinical applications of these cells. Finally, some practicalities of working with these cells are shared in order to give insight to the intricacies of their successful use.

PLURIPOTENT STEM CELLS HELPING TO UNRAVEL HEART DEVELOPMENT

The heart is a very complex organ. The cellular bulk of heart tissue mainly consists of cardiomyocytes and fibroblasts however these are not the only cell types which play an important role in cardiac development and function. Cells of the conduction system (nodal, bundle of His, bundle branch and Purkinje cells), inflammatory cells, blood vessels, endocardial and epicardial cells must also be considered. All these cell types play an important role in the correct functioning of the heart, and the body as a whole. The heart responds to sympathetic/parasympathetic stimulation—for example through psychological stress or increases/reductions in blood pressure and volume—as well as to pain, ischemia, oxygen concentration variation, changes in blood flow, and chemical/pharmacological insult.

The heart is the first functional organ created during mammalian embryonic development, derived from the mesodermal germ layer established in the early embryo. There are two distinct heart fields which contribute to the formation of the intricately complex four-chambered heart in a spatially and temporally defined manner. Upon gastrulation, the primitive streak is formed consisting of a layer of cells that establish the embryonic midline. In second week of human gestation, mesenchymal cells migrate through the streak and move out to create heart-forming regions. By week 3, this crescent shaped mesodermal region, often called the cardiac crescent, expands to form a primitive heart tube, made up of an exterior layer of myocardial cells and an interior layer of endocardial cells, separated by an extracellular matrix [8]. The heartbeat is initiated around this stage, followed by the progression of numerous cell divisions to form the common atrium and ventricles. The electrocardiogram also becomes clear at this stage, where it can be observed that cells of the primary heart tube possess low contractility and velocity, as opposed to cells of the chamber myocardium, which have high contractility and velocity [9], indicating early divergent identities of cardiomyocytes in regards to their electrophysiological properties in the early heart.

The “transcriptional machinery” of the heart is made up of an evolutionarily conserved group of transcription factors that reinforce one another’s expression and can either act singularly, or in conjunction, for the expression of genes required for proper cardiac development [10]. Signaling pathways associated with early cardiac development include the bone morphogenic protein, Wnt and fibroblast growth factor signaling pathways. Also associated are sonic hedgehog (Shh) and Notch proteins.

The concept of inducing cardiogenesis in PSC is to attempt to mimic the normal development of the heart in a dish. *In vitro* differentiation of PSCs into cardiomyocytes can be broken down to three critical steps; (a) mesoendodermal differentiation, (b) mesoderm generation, and (c) cardiac specification. These three processes can, and have been, achieved by combining different cytokines and small molecules in a tightly time- and dose-dependent manner [11]. Cardiac specification can also be influenced by the manipulation of the microenvironment, such as using matrices [12], carrier proteins [13] or coculturing with specific cell types [14]. This is further described in Figure 1.

Although hPSCs can be differentiated to CMs, so far it has been shown that they are relatively immature and maintain fetal characteristics. Efforts toward maturing these cells *in vitro* will help to further understand how functional and developmental characteristics change over time.

CURRENT *IN VITRO* USES FOR PSC-DERIVED CARDIAC CELLS

The various uses of hPSC to date have included: modeling disease with known mutations [15]; creating cells for drug testing purposes [16, 17]; understanding the concept of cell identity and potential [18]; creating cell-specific populations for possible use in regenerative models of disease [19, 20], and of course, examining both normal early human development [7] and in diseased states [21]. Some more creative uses of these cells have also been suggested, one being the use of hPSC-derived cardiomyocytes (hPSC-CMs) for making microbiomachines [22]. Here, we will focus on the disease modeling applications of these cells.

The use of hPSC-CMs for modeling disease has shown to be fruitful not only in monogenic diseases, but also for complex diseases such as trisomies and syndromes [21], where the problem of penetrance or individual disease variations could have theoretically stymied their successful use. An extremely important factor in effectively modeling complex disease is ensuring all controls used are appropriate (e.g., related individuals, generated in the same laboratory in the same manner, identical culture conditions, etc.) [23]. This is even more crucial when the target disease is highly heterogeneous, or when only subtle differences between patients and controls are observed. The confounding factors which may affect the experimental outcomes include; the origin of primary reprogrammed cell, reprogramming method, genetic background, age, sex, comorbidities, and so forth. Therefore, a superior experimental design would be one which, beside the disease phenotype, has the most similarity between patients and controls. Additionally, having multiple clones from the same individual helps to eliminate the effects of reprogramming itself on the cells and any heterogeneity ensuing from the experimental processes performed.

Further bolstering models of heterogenous disease is to make a cohort of numerous patients, which ensures a more robust outcome and confirms that specific observed phenotypes are not merely due to genetic characteristics of individual patients. In the

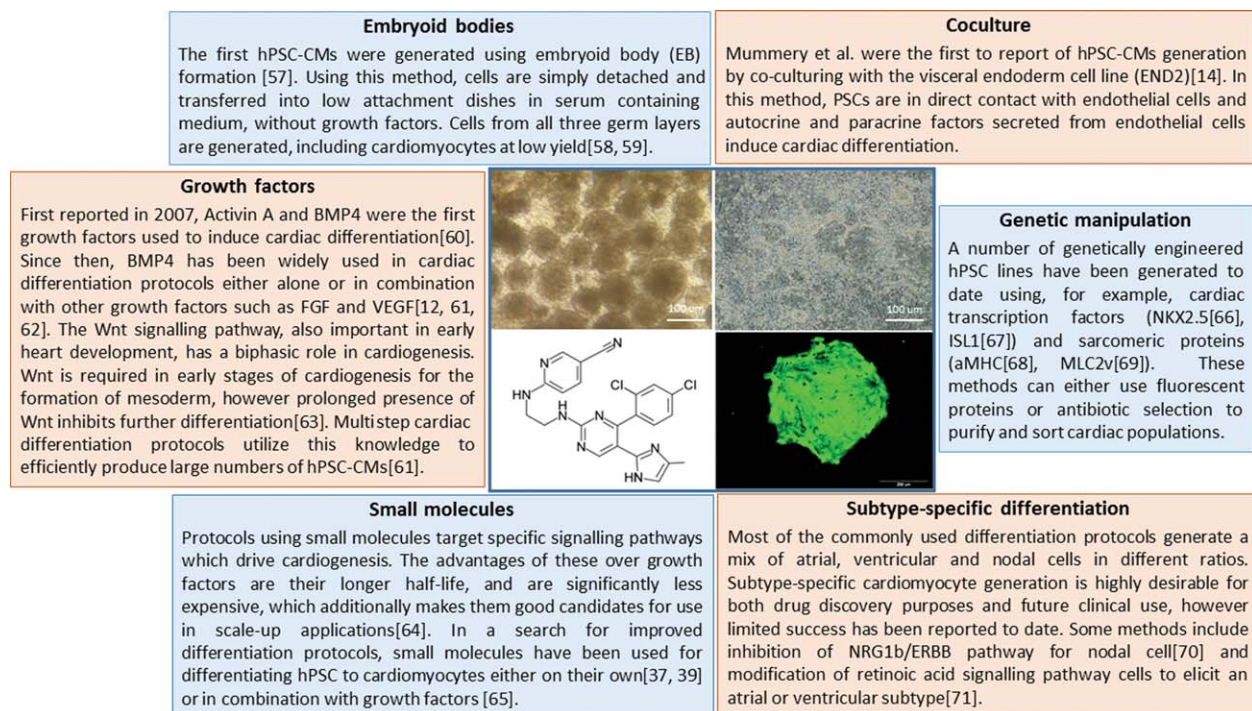


Figure 1. Summary of different methods used to differentiate hPSCs to cardiomyocytes.

case of complex diseases when multiple unknown genetic loci are involved, patient-derived iPSC or diseased embryonic stem cell lines are the best option. On the other hand, when the effect of a single genetic variation is questioned irrespective of the genetic background, genome editing, such as with CRISPR/Cas9 [24, 25], in unaffected PSC is the preferred model. It is worth mentioning that current genetic manipulation techniques are not perfect. Generation of edited cell lines is usually a time-consuming process, and the CRISPR/Cas9 system can have off-target effects. However, the technology in this area is developing rapidly and systems with greater efficiency and less off-targets have been introduced which will soon facilitate the creation of isogenic models of disease [26, 27].

THE CLINICAL LANDSCAPE OF PSC-DERIVED CARDIAC CELLS

Heart failure places an enormous burden on health systems worldwide. Patients suffering from heart failure have a poor 5-year mortality rate of approximately 50% [28] with limited treatment options. Currently, the best treatment for heart failure is transplantation, which for the majority of patients, is not a likely reality. The main cause of heart failure is ischemic heart disease [29], however congenital diseases, such as hypoplastic left heart syndrome and transposition of the great arteries, should also be considered in this burden, even though the number of affected individuals is comparatively small.

Preclinical trials using hPSC-CMs in non-human primates and porcine models have shown some promise for the treatment of heart failure [29–31], and although hPSC-CMs therapies have yet to be rigorously tested in humans, there has been evidence that other stem cell types may provide some benefit. Therapeutic trials using cardiac stem cells, mesenchymal stem cells, and bone marrow-derived cells have variably been shown to improve certain endpoints, however their true outcomes remain controversial

[32, 33]. Improvements in these models are suspected to be a consequence of paracrine functions of the transplanted cells and not due to differentiation into cardiomyocytes, however this has not yet been definitively ascertained [28]. The first trial of hPSC-derived cardiac progenitor cells involving a single post-myocardial infarction patient was performed in 2015 [34], providing evidence of the feasibility of using hPSC for treatment of heart failure. Much work is still required to discover if this will be a promising option for treatments in the future.

For stem cell therapies to work, it is postulated that transplanted cells should be able to fully integrate and mature into cells similar to those found in vivo [29]. One school of thought suggests that transplantation of cells similar to the native tissue should be used [29], whereas others propose an earlier or progenitor type cell be transplanted to allow the cells opportunity to adapt to the native tissue environment [34]. It will only be through rigorous high-quality studies that this will eventually be ascertained.

An important step for the clinical success of hPSC for regenerative medicine is being able to reproducibly generate large numbers of highly-purified cells under clinical good manufacturing practice conditions [35, 36]. Although many articles have reported on ways to produce highly pure cardiomyocyte populations, the success of these methods has been variable from line to line. The reality is that every individual stem cell line is different, and thus responds differently to differentiation protocols, even in experienced hands and when well defined [11]. To date, it has been extremely difficult to reproducibly create functional cells with highly-purified populations from numerous genetically unique lines [37–39]. The largest study done to date using a small molecule-based cardiac differentiation protocol reported high reproducibility on a record 23 genetically individual pluripotent stem cell lines (51 total lines, including clones) [40]. Possible

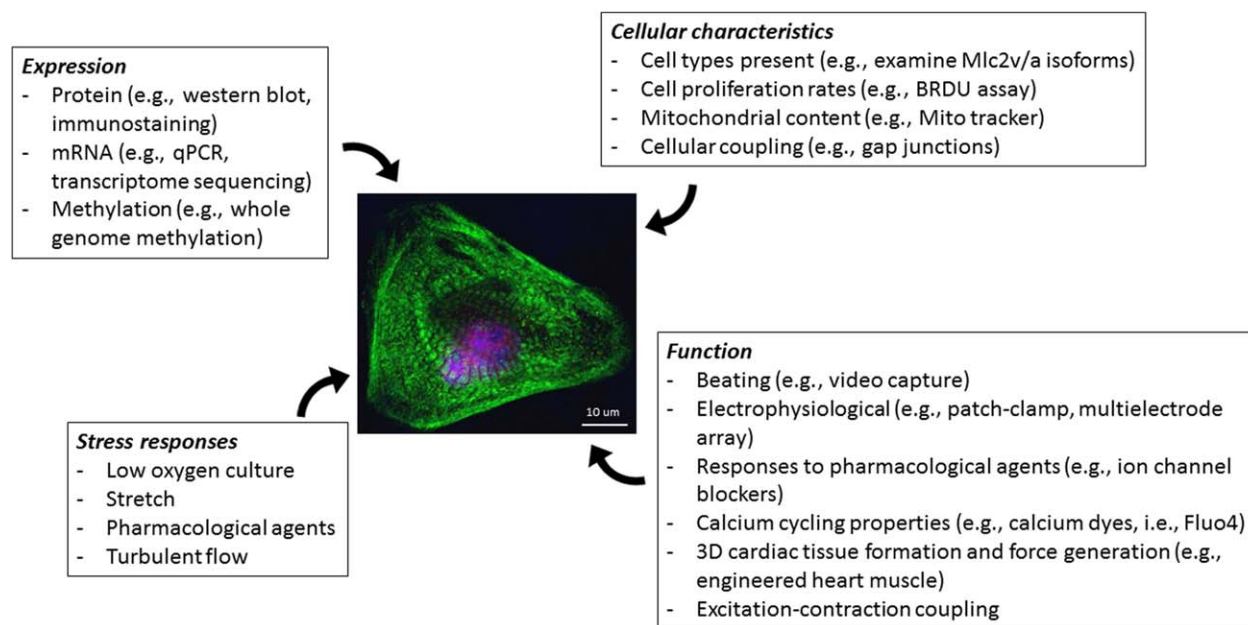


Figure 2. Experimental procedures to consider when performing experiments with PSC-CMs. **Expression:** hPSC-CMs can be analyzed for the expression of proteins, RNA, methylation markings. **Cellular characteristics:** These methods used to examine the physical characteristics of cells will give insight into many types of diseases, particularly those with functional consequences. **Function:** The most challenging aspect of using hPSC-CM is assessing their function. Methods included are specialized and require expert advice. For example, engineered heart muscle is a 3D tissue construct made of mixture of cardiomyocytes, fibroblasts and extracellular matrix which can be formed within ring shaped molds, embedded with rigid posts, or elongated into rigid mesh. These can be used to measure the force of contraction of PSC-CM, and has also been shown to induce sarcomere assembly and maturation. Patch clamping is the gold standard method for the electrophysiological characterization of cardiomyocytes. Using this method, functionality of the cells, maturity level and even subtype of the cells can be revealed. This method, however is extremely time consuming and low-throughput. Multielectrode array (MEA) is a non-invasive method for detection of field potential. This method can be used for high-throughput safety screening of drugs. Excitation-contraction coupling can be investigated using dye transfer techniques. **Stress responses:** Cellular responses to external stress, such as culturing cells in low oxygen level and stretch, can also be used to probe the functionality of hPSC-CMs characteristics. (see References [41, 52, 54–57, 73–75])

clinical applications of hPSC-CMs will be hindered by this huge roadblock in the regenerative medicine field if personalized therapies are the way forward to treatment.

PRACTICALITIES OF MAKING hPSC-CMS

The laboratory environment is one that is highly contrived and obviously not precisely mimicking normal development. Although some excellent methods have been published on how to efficiently differentiate hPSC into cardiomyocytes, how these actually represent in vivo cells is still unanswered. It is known however, that the maturity of these cells is limited to very early developmental stages [41]. It also has been shown that hPSC-CMs are smaller when compared to adult human cardiomyocytes. Cell size is very important because it affects the membrane capacitance, contractile force and action potential depolarization [42]. During cardiac maturation, electrophysiology, mitochondrial content, expression of cardiac specific isoforms, and sarcomere organization changes, which will consequently change the functionality of the cardiomyocytes. So far, different approaches have been used to enhance hPSC-CMs maturation levels, such as long term culture [43], substrate stiffness [44], cell patterning approaches [45, 46], electric stimulation [47, 48], or addition of different biochemical materials such as adrenergic receptor agonists [49] and Triiodothyronine [50]. However, the problem with these methods is that they are usually time consuming and by themselves have

only resulted to an intermediate state of maturation. The best result achieved so far is to neonatal stage. This area is currently the focus of a large number of studies which have the aim to produce more mature type cells. One possible approach would be to combine two or more of the maturation methods in order to enhance the final outcome.

When considering hPSC-CMs and their role in modeling both development and cardiac disease, one must not only consider the role of the cell functionally, but also the role of cell-to-cell interactions (e.g., intercalated discs, gap junctions, desmosomes), and the environment in which the cells reside, (e.g., extracellular matrix, three-dimensional [3D] spatiality, shear forces). Given the complexity of mechanical, structural and hemodynamic interactions in normal development, it is challenging to isolate specific signals which may affect development and remodeling responses in vivo, particularly since stretch and strain often vary in vitro [51]. Therefore, existing experimental techniques still remain inadequate in uncovering differences between diseased versus nondiseased, and in vivo and in vitro produced cells. This however, should not preclude the use of these cells in complex models of cardiac disease and development, as many undiscovered or surprising outcomes have still been revealed using current techniques [21].

If making one or one million cardiomyocytes, it is important to remember that this cell is merely one building block of a larger, more complex organ. One must consider the outcome of what any experiment is set up to achieve (Fig. 2). The heart is not

merely an electrically stimulated muscular pump for the blood, but a neurally integrated, hemodynamically active organ which responds to changes in the body as a whole, compensating homeostatically to changes in blood pressure, stress, and access to nutrients and oxygen. The importance of the 3D structure of the heart and each cell's contribution to the organ must be also acknowledged, and finally the importance of cell coupling—both electrically and physically—must also be considered. The development of engineered tissues [52] or organoids [53] now give us the opportunity to examine interactions between different cell types and now have an even better understanding of what may be occurring physiologically in the heart. Engineered heart muscle is a 3D tissue construct made of mixture of cardiomyocytes, fibroblasts and extracellular matrix which can be formed within ring shaped molds [52], embedded with rigid posts [54, 55], or elongated into rigid mesh [41, 56]. These can be used to measure the force of contraction of hPSC-CMs, and has also been shown to

induce sarcomere assembly and maturation [57]. To make these tissues requires more than a million cells, which limits greater applications of these structures. A current aim in this sphere is to miniaturize this system in order to facilitate their mass production, and thus, enhance their application in disease modeling and drug screening platforms [57]. With the plethora of uses these versatile cells provide, it is exciting to consider what might be the next step in this already electrified field of research.

AUTHOR CONTRIBUTIONS

H.F. and A.B.: manuscript writing, final approval of the manuscript.

DISCLOSURE OF POTENTIAL CONFLICTS OF INTEREST

The authors indicated no potential conflicts of interest.

REFERENCES

- World Health Organization. Cardiovascular Diseases Factsheet. 2016; Available at <http://www.who.int/mediacentre/factsheets/fs317/en/>. Accessed January 2017.
- Evans MJ, Kaufman, MH. Establishment in culture of pluripotential cells from mouse embryos. *Nature* 1981;292:154–156.
- Thomson JA, Itskovitz-Eldor J, Shapiro SS, et al. Embryonic stem cell lines derived from human blastocysts. *Science* 1998;282:1145–1147.
- Takahashi K, Tanabe K, Ohnuki M, et al. Induction of pluripotent stem cells from adult human fibroblasts by defined factors. *Cell* 2007;131:861–872.
- Patterson M, Chan DN, Ha I, et al. Defining the nature of human pluripotent stem cell progeny. *Cell Res* 2012;22:178–193.
- Pankratz MT, Li XJ, Lavaute TM, et al. Directed neural differentiation of human embryonic stem cells via an obligated primitive anterior stage. *STEM CELLS* 2007;25:1511–1520.
- Calderon D, Bardot E, Dubois N. Probing early heart development to instruct stem cell differentiation strategies. *Dev Dyn* 2016;245:1130–1144.
- Srivastava D. Making or breaking the heart: From lineage determination to morphogenesis. *Cell* 2006;126:1037–1048.
- Dunwoodie SL. Combinatorial signaling in the heart orchestrates cardiac induction, lineage specification and chamber formation. *Semin Cell Dev Biol* 2007;18:54–66.
- Bondué A, Lapouge G, Paulissen C, et al. Mesp1 acts as a master regulator of multipotent cardiovascular progenitor specification. *Cell Stem Cell* 2008;3:69–84.
- Kattman SJ, Witty AD, Gagliardi M, et al. Stage-specific optimization of activin/nodal and BMP signaling promotes cardiac differentiation of mouse and human pluripotent stem cell lines. *Cell Stem Cell* 2011;8:228–240.
- Zhang J, Klos M, Wilson GF, et al. Extracellular matrix promotes highly efficient cardiac differentiation of human pluripotent stem cells: The matrix sandwich method. *Circ Res* 2012;111:1125–1136.
- Fonoudi H, Yeganeh M, Fattahi F, et al. ISL1 protein transduction promotes cardiomyocyte differentiation from human embryonic stem cells. *PLoS One* 2013;8:e55577.
- Mummery C, Ward-van Oostwaard D, Doevendans P, et al. Differentiation of human embryonic stem cells to cardiomyocytes: Role of coculture with visceral endoderm-like cells. *Circulation* 2003;107:2733–2740.
- Bellin M, Casini S, Davis RP, et al. Isogenic human pluripotent stem cell pairs reveal the role of a KCNH2 mutation in long-QT syndrome. *EMBO J* 2013;32:3161–3175.
- Liang P, Lan F, Lee AS, et al. Drug screening using a library of human induced pluripotent stem cell-derived cardiomyocytes reveals disease-specific patterns of cardiotoxicity. *Circulation* 2013;127:1677–1691.
- Mercola M, Colas A, Willems E. Induced pluripotent stem cells in cardiovascular drug discovery. *Circ Res* 2013;112:534–548.
- Bosman A, Sartiani L, Spinelli V, et al. Molecular and functional evidence of HCN4 and caveolin-3 interaction during cardiomyocyte differentiation from human embryonic stem cells. *Stem Cells Dev* 2013;22:1717–1727.
- Neofytou E, O'Brien CG, Couture LA, et al. Hurdles to clinical translation of human induced pluripotent stem cells. *J Clin Invest* 2015;125:2551–2557.
- Lalit PA, Hei DJ, Raval AN, et al. Induced pluripotent stem cells for post-myocardial infarction repair: Remarkable opportunities and challenges. *Circ Res* 2014;114:1328–1345.
- Bosman A, Letourneau A, Sartiani L, et al. Perturbations of heart development and function in cardiomyocytes from human embryonic stem cells with trisomy 21. *STEM CELLS* 2015;33:1434–1446.
- Park SJ, Gazzola M, Park KS, et al. Phototactic guidance of a tissue-engineered soft-robotic ray. *Science* 2016;353:158–162.
- Bellin M, Mummery, CL. Inherited heart disease - what can we expect from the second decade of human iPSC cell research? *FEBS Lett* 2016;590:2482–2493.
- Cong L, Ran FA, Cox D, et al. Multiplex genome engineering using CRISPR/Cas systems. *Science* 2013;339:819–823.
- Jiang W, Bikard D, Cox D, et al. RNA-guided editing of bacterial genomes using CRISPR-Cas systems. *Nat Biotechnol* 2013;31:233–239.
- Zetsche B, Gootenberg JS, Abudayyeh OO, et al. Cpf1 is a single RNA-guided endonuclease of a class 2 CRISPR-Cas system. *Cell* 2015;163:759–771.
- Shen B, Zhang W, Zhang J, et al. Efficient genome modification by CRISPR-Cas9 nickase with minimal off-target effects. *Nat Methods* 2014;11:399–402.
- Chong JJ, Murry CE. Cardiac regeneration using pluripotent stem cells—progression to large animal models. *Stem Cell Res* 2014;13:654–665.
- Chong JJ, Yang X, Don CW, et al. Human embryonic-stem-cell-derived cardiomyocytes regenerate non-human primate hearts. *Nature* 2014;510:273–277.
- Kimbrel EA, Lanza R. Current status of pluripotent stem cells: Moving the first therapies to the clinic. *Nat Rev Drug Discov* 2015;14:681–692.
- Trounson A, DeWitt ND. Pluripotent stem cells progressing to the clinic. *Nat Rev Mol Cell Biol* 2016;17:194–200.
- Trounson A, McDonald C. Stem cell therapies in clinical trials: Progress and challenges. *Cell Stem Cell* 2015;17:11–22.
- Nowbar AN, Mielewicz M, Karavassilis M, et al. Discrepancies in autologous bone marrow stem cell trials and enhancement of ejection fraction (DAMASCENE): Weighted regression and meta-analysis. *BMJ* 2014;348:g2688.
- Menasche P, Vanneau V, Hagege A, et al., Human embryonic stem cell-derived cardiac progenitors for severe heart failure treatment: First clinical case report. *Eur Heart J* 2015;36:2011–2017.
- Crook JM, Peura TT, Kravets L, et al. The generation of six clinical-grade human embryonic stem cell lines. *Cell Stem Cell* 2007;1:490–494.
- De Sousa PA, Downie JM, Tye BJ, et al. Development and production of good manufacturing practice grade human embryonic stem cell lines as source material for clinical application. *Stem Cell Res* 2016;17:379–390.

- 37 Zhu WZ, Van Biber B, Laflamme MA. Methods for the derivation and use of cardiomyocytes from human pluripotent stem cells. *Methods Mol Biol* 2011;767:419–431.
- 38 Lian X, Hsiao C, Wilson G, et al. Robust cardiomyocyte differentiation from human pluripotent stem cells via temporal modulation of canonical Wnt signaling. *Proc Natl Acad Sci USA* 2012;109:E1848–E1857.
- 39 BurrIDGE PW, Matsa E, Shukla P, et al. Chemically defined generation of human cardiomyocytes. *Nat Methods* 2014;11:855–860.
- 40 Fonoudi H, Ansari H, Abbasalizadeh S, et al. Large-scale production of cardiomyocytes from human pluripotent stem cells using a highly reproducible small molecule-based differentiation protocol. *J Vis Exp* 2016.
- 41 Bian W, Badie N, Himel HDT, et al. Robust T-tubulation and maturation of cardiomyocytes using tissue-engineered epicardial mimetics. *Biomaterials* 2014;35:3819–3828.
- 42 Spach MS, Heidlage JF, Barr RC, et al. Cell size and communication: Role in structural and electrical development and remodeling of the heart. *Heart Rhythm* 2004;1:500–515.
- 43 Lundy SD, Zhu WZ, Regnier M, et al. Structural and functional maturation of cardiomyocytes derived from human pluripotent stem cells. *Stem Cells Dev* 2013;22:1991–2002.
- 44 Jacot JG, Kita-Matsuo H, Wei KA, et al. Cardiac myocyte force development during differentiation and maturation. *Ann N Y Acad Sci* 2010;1188:121–127.
- 45 Wang PY, Yu J, Lin JH, et al. Modulation of alignment, elongation and contraction of cardiomyocytes through a combination of nanotopography and rigidity of substrates. *Acta Biomater* 2011;7:3285–3293.
- 46 Heidi Au HT, Cui B, Chu ZE, et al. Cell culture chips for simultaneous application of topographical and electrical cues enhance phenotype of cardiomyocytes. *Lab Chip* 2009;9:564–575.
- 47 Martherus RS, Vanherle SJ, Timmer ED, et al. Electrical signals affect the cardiomyocyte transcriptome independently of contraction. *Physiol Genomics* 2010;42A:283–289.
- 48 Deng XF, Rokosh DG, Simpson PC. Autonomous and growth factor-induced hypertrophy in cultured neonatal mouse cardiac myocytes. Comparison with rat. *Circ Res* 2000;87:781–788.
- 49 Foldes G, Mioulane M, Wright JS, et al. Modulation of human embryonic stem cell-derived cardiomyocyte growth: A testbed for studying human cardiac hypertrophy? *J Mol Cell Cardiol* 2011;50:367–376.
- 50 Lee YK, Ng KM, Chan YC, et al. Triiodothyronine promotes cardiac differentiation and maturation of embryonic stem cells via the classical genomic pathway. *Mol Endocrinol* 2010;24:1728–1736.
- 51 Zhu R, Blazeski A, Poon E, et al. Physical developmental cues for the maturation of human pluripotent stem cell-derived cardiomyocytes. *Stem Cell Res Ther* 2014;5:117.
- 52 Zimmermann WH, Schneiderbanger K, Schubert P, et al. Tissue engineering of a differentiated cardiac muscle construct. *Circ Res* 2002;90:223–230.
- 53 McCracken KW, Cata EM, Crawford CM, et al. Modelling human development and disease in pluripotent stem-cell-derived gastric organoids. *Nature* 2014;516:400–404.
- 54 Hansen A, Eder A, Bonstrup M, et al. Development of a drug screening platform based on engineered heart tissue. *Circ Res* 2010;107:35–44.
- 55 Stoehr A, Neuber C, Baldauf C, et al. Automated analysis of contractile force and Ca²⁺ transients in engineered heart tissue. *Am J Physiol Heart Circ Physiol* 2014;306:H1353–H1363.
- 56 Tulloch NL, Muskheili V, Razumova MV, et al. Growth of engineered human myocardium with mechanical loading and vascular coculture. *Circ Res* 2011;109:47–59.
- 57 Huebsch N, Loskill P, Deveshwar N, et al. Miniaturized iPSC-cell-derived cardiac muscles for physiologically relevant drug response analyses. *Sci Rep* 2016;6:24726.
- 58 Kehat I, Kenyagin-Karsenti D, Snir M, et al. Human embryonic stem cells can differentiate into myocytes with structural and functional properties of cardiomyocytes. *J Clin Invest* 2001;108:407–414.
- 59 He JQ, Ma Y, Lee Y, et al. Human embryonic stem cells develop into multiple types of cardiac myocytes: Action potential characterization. *Circ Res* 2003;93:32–39.
- 60 Xu C, Police S, Rao N, et al. Characterization and enrichment of cardiomyocytes derived from human embryonic stem cells. *Circ Res* 2002;91:501–508.
- 61 Laflamme MA, Chen KY, Naumova AV, et al. Cardiomyocytes derived from human embryonic stem cells in pro-survival factors enhance function of infarcted rat hearts. *Nat Biotechnol* 2007;25:1015–1024.
- 62 Yang L, Soonpaa MH, Adler ED, et al. Human cardiovascular progenitor cells develop from a KDR⁺ embryonic-stem-cell-derived population. *Nature* 2008;453:524–528.
- 63 BurrIDGE PW, Thompson S, Millrod MA, et al. A universal system for highly efficient cardiac differentiation of human induced pluripotent stem cells that eliminates interline variability. *PLoS One* 2011;6:e18293.
- 64 Ueno S, Weidinger G, Osugi T, et al. Biphasic role for Wnt/beta-catenin signaling in cardiac specification in zebrafish and embryonic stem cells. *Proc Natl Acad Sci USA* 2007;104:9685–9690.
- 65 Fonoudi H, Ansari H, Abbasalizadeh S, et al. A universal and robust integrated platform for the scalable production of human cardiomyocytes from pluripotent stem cells. *STEM CELLS TRANSL MED* 2015;4:1482–1494.
- 66 Minami I, Yamada K, Otsuji TG, et al. A small molecule that promotes cardiac differentiation of human pluripotent stem cells under defined, cytokine- and xeno-free conditions. *Cell Rep* 2012;2:1448–1460.
- 67 Elliott DA, Braam SR, Koutsis K, et al. NKX2-5(eGFP/w) hESCs for isolation of human cardiac progenitors and cardiomyocytes. *Nat Methods* 2011;8:1037–1040.
- 68 Bu L, Jiang X, Martin-Puig S, et al. Human ISL1 heart progenitors generate diverse multipotent cardiovascular cell lineages. *Nature* 2009;460:113–117.
- 69 Anderson D, Self T, Mellor IR, et al. Transgenic enrichment of cardiomyocytes from human embryonic stem cells. *Mol Ther* 2007;15:2027–2036.
- 70 Huber I, Itzhaki I, Caspi O, et al. Identification and selection of cardiomyocytes during human embryonic stem cell differentiation. *FASEB J* 2007;21:2551–2563.
- 71 Zhu WZ, Xie Y, Moyes KW, et al. Neuregulin/ErbB signaling regulates cardiac subtype specification in differentiating human embryonic stem cells. *Circ Res* 2010;107:776–786.
- 72 Zhang Q, Jiang J, Han P, et al. Direct differentiation of atrial and ventricular myocytes from human embryonic stem cells by alternating retinoid signals. *Cell Res* 2011;21:579–587.
- 73 Egashira T, Yuasa S, Tohyama S, et al. Patient-specific induced pluripotent stem cell models: Characterization of iPSC Cell-derived cardiomyocytes. *Methods Mol Biol* 2016;1353:343–353.
- 74 Kanda Y, Yamazaki D, Kurokawa J, et al. Points to consider for a validation study of iPSC cell-derived cardiomyocytes using a multi-electrode array system. *J Pharmacol Toxicol Methods* 2016;81:196–200.
- 75 Marcu IC, Illaste A, Heuking P, et al. Functional characterization and comparison of intercellular communication in stem cell-derived cardiomyocytes. *STEM CELLS* 2015;33:2208–2218.