

RESEARCH ARTICLE

Open Access



Prevalence of BRCA mutations among hereditary breast and/or ovarian cancer patients in Arab countries: systematic review and meta-analysis

Khadiga Abdulrashid, Nour AlHussaini, Wifag Ahmed and Lukman Thalib* 

Abstract

Background: To systematically assess the prevalence of BRCA1 and BRCA2 gene mutations in women with Hereditary Breast and/or Ovarian Cancer (HBOC) in Arab countries and to describe the variability in the BRCA gene mutations in different regions of the Arab world.

Methods: Observational studies reporting prevalence of BRCA mutations from 22 Arab countries were systematically searched in databases including PUBMED, EMBASE, Web of Science, and Google Scholar. Two reviewers independently screened the studies and extracted data and assessed the risk of bias. Hoy's risk of Bias tool was used to assess the biases in individual studies. Due to substantial heterogeneity, pooled weighted estimates were calculated using Quality Effect Models (QEM) that adjust for bias, while the Random Effect Models (REM) estimates served as the sensitivity estimates.

Results: Fourteen studies reporting prevalence of BRCA were included. The pooled estimate of BRCA among HBOC was 20% (95% CI: 7–36%). Subgroup analysis including only those with low risk of bias provided an estimate of 11% (95% CI: 1–27%). Levant region had higher prevalence 28% (95% CI: 11–49%) compared to Arabian Gulf region and North Africa but differences are not statistically significant, when tested using Z-test for proportions.

Conclusion: Given the pooled estimates vary widely with substantial heterogeneity, larger, well-designed studies are warranted to better understand the frequency and the impact of BRCA gene mutations among Arab women.

Trial registration: International Prospective Register of Systematic Reviews (PROSPERO) registration number: [CRD42018095905](https://www.crd.york.ac.uk/PROSPERO/record/CRD42018095905).

Keywords: BRCA mutations, Familial breast cancer, Familial ovarian cancer, Arab countries, Systematic review, meta-analysis

Background

Hereditary Breast and/or Ovarian cancer (HBOC) is an autosomal dominant cancer, that produce higher than normal levels of breast cancer and ovarian cancer in genetically related families [1]. About 5–10% of all breast cancer cases [2] and more than 23% of all ovarian cancers [3] are thought to be hereditary. BRCA genes have been identified to be the most commonly linked germ line mutations [4]. Harmful mutations in the *BRCA1*

and *BRCA2* genes can produce very high rates of breast and ovarian cancer and increases the risk of developing breast cancer by up to 85% and the ovarian cancer by up to 54% [3].

However, BRCA frequencies are known to vary between populations. For instance, the prevalence of BRCA1 in Japan were reported to be as low as 2.6% while in the USA it can be as high as 11.1% [30]. Understanding population specific BRCA gene distributions can be helpful in developing appropriate risk assessment strategies that can help reduce the risk of developing cancers. It is also important in developing cost-effective

* Correspondence: Lthalib@qu.edu.qa

Department of Public Health, College of Health Sciences, Qatar University, PO Box 2713, Doha, Qatar



strategies for genetic testing for BRCA mutations [5]. In terms of prognosis breast or/and ovarian cancer patients with family history of the disease with one or more of family members differs from sporadic cancers that occur without any hereditary link [6].

However, there is paucity of high quality data on the epidemiology of BRCA mutations in Arab populations, despite the fact that the breast cancer is the leading cause of all cancer deaths among Arab women [36]. The breast cancer also accounts for about 14 to 42% of all female cancers in the Arab world [37]. For instance, in Lebanon the breast cancer is leading in cancer incidences, with about 37.6% of all new female cancer cases diagnosed during the period of 2004–2010 [38]. A study in Yemen showed that breast cancer accounted 22% from all cancers cases [39]. Similar incidences were reported from Oman, where the breast cancer accounts for 25% of all cancer cases [40]. Given that breast cancer is the most commonly diagnosed cancer among Arab women [7], understanding the genetic role can help deal with the diseases better. Moreover, breast and ovarian cancer patients (BOC) are also diagnosed as early onset cases in the Arab countries. This led some to suggest that there exist variant mutations of BRCA genes among Arabs [8].

To the best of our knowledge, there is no aggregated data on BRCA gene distribution among Arab women. To this effect, we aimed to quantify the prevalence of BRCA1 and BRCA2 gene mutations and to explore the geographic variability of these gene mutations within the Arab world. Given the clinical implications in terms of diagnosis, risk stratifications, and management of breast or/and ovarian cancer, quantifying the extent to which these gene mutations prevail in the Arab populations can be highly valuable.

Methods

Protocol and registration

This present study was conducted following the recommendations provided by the PRISMA [9] and MOOSE guidelines [10]. This study was registered with the International Prospective Register of Systematic Reviews (PROSPERO) and the registration number is: CRD42018095905.

Inclusion and exclusion criteria

The following inclusion criteria were used to identify eligible studies: peer reviewed studies published in English or Arabic; cohort studies, cross-sectional, case-series or registry based studies, providing sufficient data to compute the prevalence of either BRCA1 or BRCA2 gene mutations in the breast and / or ovarian cancer patients in the Arab world.

Studies were excluded if they were confined mainly to the carriers of BRCA mutations without including other cancer patients. Those studies that has no information on family history of disease were also excluded as there is no way of quantifying HBOC. Likewise, experimental studies that were evaluating the effect of an intervention on HBOC patients were also excluded as computing prevalence in these studies were not possible. Additionally, studies reporting on BRCA1/2 genes mutations in cancers other than breast or ovarian cancers were also excluded.

Information sources and databases

The electronic databases Web of Science, PubMed/Medline and EMBASE were searched to identify the primary studies up to April 11, 2018. Further search included Google Scholar search to identify any relevant studies as well hand search of the reference lists of the relevant articles. Although, there were no systematic reviews or meta-analyses from this region, we searched for all review articles reporting on the BRCA mutations from other parts of the world to identify any relevant studies from Arab countries. Only those published in English and Arabic were included, and the duplicates studies were removed using EndNote software.

Search strategy

Studies from all 22 Arab member states of the Arab league [11] were included. We used the following terms to be in the “Titles” or “Abstracts: [BRCA],” and [“Arabs,” or “Qatar,” or “Kuwait,” “Oman,” or “Iraq,” or “Saudi Arabia,” or “Bahrain,” or “United Arab Emirates,” or “Yamen,” “Syria,” or “Lebanon,” or “Jordan,” or “Palestine,” or “Jerusalem,” or “Gaza,” or “Egypt,” or “Libya,” or “Sudan,” or “Tunisia,” or “Morocco,” or “Algeria,” or “Somalia,” or “Comoros,” or “Djibouti,” or “Mauritania.”] and any other variant names for any of these countries.

Study selection

Two review authors independently assessed titles and abstracts of all citations retrieved by the search for relevance against the inclusion criteria. Then the full-text versions of studies considered potentially eligible were retrieved. The same two authors independently assessed the full papers for eligibility, with disagreements resolved through input by a third author [12]. When the eligibility of a study was unclear, we attempted to contact study authors.

Data extraction

Two authors independently extracted data from eligible studies and cross-checked for accuracy and agreement by the third author. Data extraction using a standardized form

Table 1 Characteristics of Studies Included

Author	Year	Country	City	Design	HBOC/ HBC	Age at Diagnosis (range or mean)	Mutation type	Test type	Sample size	Sample size of HBOC
Abdel-Razeq	2018	Jordan	–	Pilot study	HBC ^b	22–75	Deleterious Suspected- deleterious	BART ¹	100	84
Bu	2016	Saudi Arabia	–	Cross-sectional	HBC	41.9	Deleterious	PCR ² , CS ³ / SS ⁴ , and TCS ⁵	818	60
Bujassoum	2017	Qatar	–	Retro ^a	HBC	23–68	Deleterious	MLPA ⁶	82	82
Cherbal	2015	Algeria	High Plains	Cross-sectional	HBOC ^c	< 50	Deleterious VUS	PCR ²	192	192
El Saghir	2015	Lebanon	Beirut	Cross-sectional	HBC	40.8	Deleterious VUS	MLPA ⁶	250	74
Ibrahim	2010	Egypt	Alexandria	Registry data	HBC	43.5	Deleterious	SSCP ⁷ HAC ⁸	60	39
Jalkh	2012	Lebanon	–	Cross-sectional	HBC	41	Deleterious VUS Polymorphisms	Fluorescent DS ⁹	72	72
Kadouri	2007	Palestine	East Jerusalem	Cross-sectional	HBC	–	Deleterious VUS Polymorphisms	DHPLC ¹⁰	31	10
Laarabi	2017	Morocco	North-East morocco (Rabat, Fes, Oujda)	Cross-sectional	HBOC	–	Deleterious	CSS ¹¹ NGS ¹² TS ¹³	122	122
Laraqui	2013	Morocco	Rabat	Retro	HBC	–	Deleterious	DS ¹⁴	121	19
Mahfoudh	2012	Tunisia	Sousse	Cross-sectional	HBC	29–65	Deleterious VUS Polymorphisms	DS ¹⁵	24	24
Riahi	2016	Tunisia	–	Cross-sectional	HBC	–	Deleterious	Logistic regression model (studied three studies)	92	92
Tazzite	2012	Morocco	Casablanca	Case series	HBOC	25–60	Deleterious	DS ¹⁵	40	34
Uhrhammer	2008	Algeria	Algiers	Pilot study	HBC	15–52	Deleterious VUS Polymorphisms	PCR ²	64	13

^aRetro: retrospective cohort study

^bHBC: hereditary breast cancer

^cHBOC: hereditary breast and/or ovarian cancer

¹BART: Comprehensive BRACAnalysis and BRACAnalysis rearrangement test

²PCR: Polymerase chain reaction

³CS: Capture sequencing

⁴SS: Sanger sequencing

⁵TCS: Targeted capture sequencing

⁶MLPA: Multiple ligation dependent probe amplification

⁷SSCP: single strand conformation polymorphism assay

⁸HAC: Heteroduplex assay confirmation

⁹Fluorescent direct sequencing of the entire coding region and intronic sequence flanking each exon

¹⁰DHPLC: denaturing high performance liquid chromatography

¹¹CSS: Conventional individual exon-by-exon Sanger sequencing

¹²NGS: Next generation sequencing

¹³TS: Target screening for exon 10 in BRCA2

¹⁴Direct sequencing of all coding exons and flanking intron sequences of the BRCA1 gene

¹⁵DS: Direct Sequencing

¹⁶Direct sequencing

included variables such as author, year of publication, country, city, study design, type of disease (BC/OC), age at diagnosis, mutation type, mutation test used, overall sample size and sample size of HBOC subset patients (Table 1).

Methodological quality assessment

We used the risk of bias assessment tool developed by Hoy et al. [13] to evaluate the quality of individual studies. The tool has 10 items: four items were related to

external validity in terms of how well study sample represent the study population and remaining six items were related to internal validity of the studies. Total quality scores for each study was obtained by summing the binary response scores (Yes = 1 or No = 0) that ranged from 0 to 10. As per Hoy et al. [13], scores above 7 indicated low risk of bias while a score between 6 to 7 indicated moderate risk of bias. Those studies scoring less than 6 were considered to have high risk of bias.

Syntheses of results

We pooled the quantitative data using Meta-XL version 5.3 [14]. We reported the pooled prevalence and 95% confidence intervals (CI) and explored the robustness of meta-analyses using appropriate meta-analytical models based on the level of heterogeneity. Statistical heterogeneity were assessed using Cochrane Q statistic and I-squared (I²) statistics [15].

In the absence of heterogeneity, the Fixed Effect Models (FEM) were used. When substantial heterogeneity is encountered, the Quality Effects Models (QEM) were used to pool the prevalence [16]. Significant heterogeneity is indicated by a significant P-value of the

Cochrane-Q test or an I² statistic value that is higher 50%. We used the quality scores computed by ROB assessment tool to fit the bias adjusted QEM. Additionally, Random Effect Models (REM) were used to obtain sensitivity estimates when substantial heterogeneity is encountered. We further investigated the sources of heterogeneity using subgroup analysis. We used a-priori defined test to compare the pooled prevalence in three different regions of the Arab world: Levant, North Africa and Arabian Gulf Co-operation Countries (GCC) using Z- tests for proportions.

Results

Selection of studies

The database search generated a total of 6315 records (Fig. 1). We excluded 6249 studies and reasons for exclusions are listed in the Fig. 1. We assessed the full text of 66 studies for their eligibility. Three authors independently read through the full texts and identified those eligible for the review based on a-priori inclusion criteria. Only 14 publications were found to be eligible and included in this study.

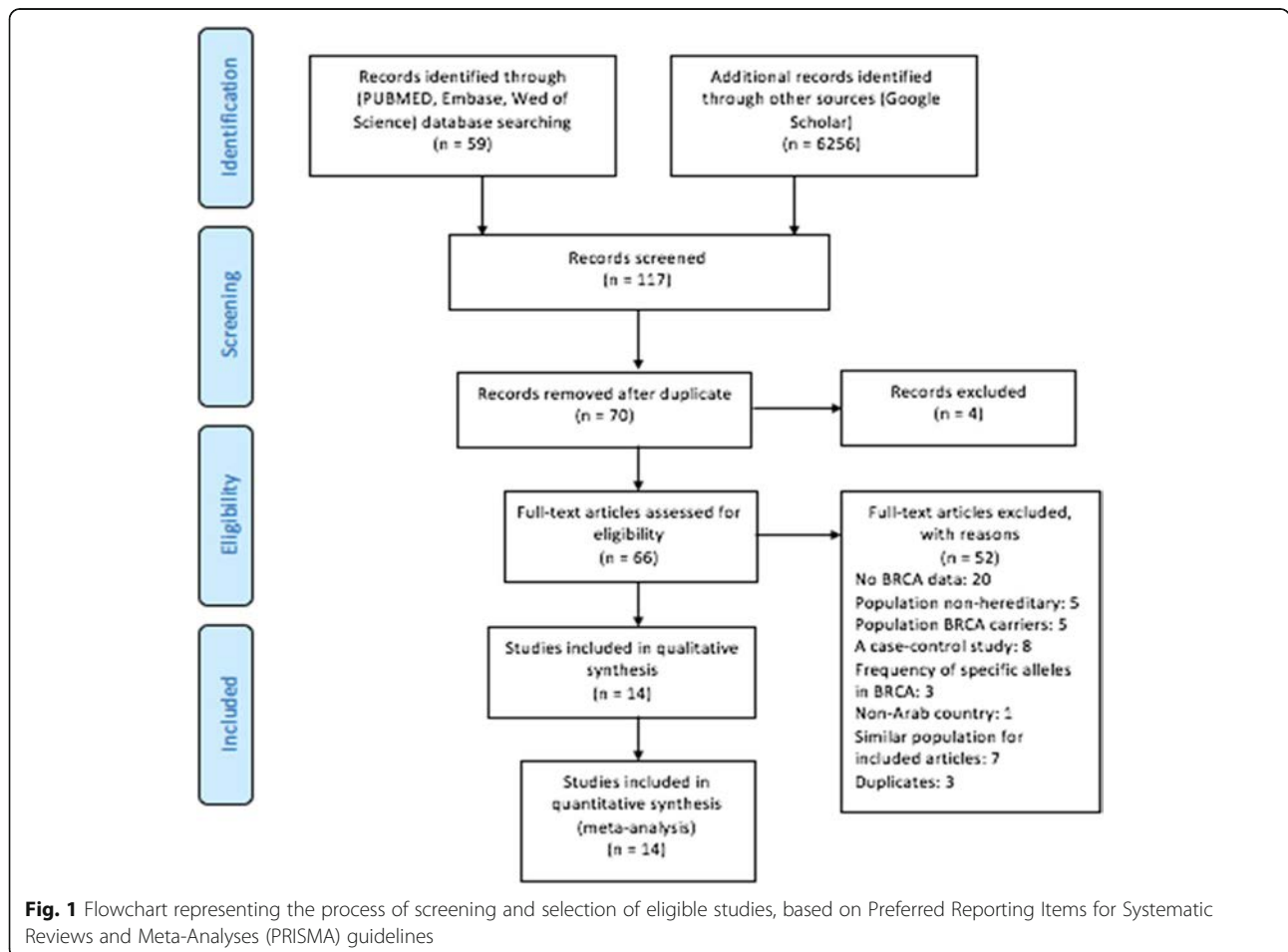


Fig. 1 Flowchart representing the process of screening and selection of eligible studies, based on Preferred Reporting Items for Systematic Reviews and Meta-Analyses (PRISMA) guidelines

Study characteristics

The 14 studies selected were all peer reviewed full length publications from nine different Arab countries. All these 14 articles were published in English and published during the period of 2007 and 2018. They reported on the prevalence of BRCA1 and / or BRCA2 mutations among breast or/ and ovarian cancer patients. Of these, eight were conducted in North African countries, four from Levant, and two from GCC. There were three studies from Morocco: one each from North-east Morocco [27], Casablanca [22] and Rabat [4]. Two studies each from the following countries. Algeria [23, 25], Lebanon [7, 26], and Tunisia [20, 21]. Single studies from each of the following countries: Qatar [17], Saudi Arabia [5], Jordan [24], Palestine [19], and Egypt [18].

Sample sizes of the included studies ranged between 10 to 192, and total number of patients pooled was 917. Of these, 11 studies included Hereditary Breast Cancer (HBC) patients, three had Hereditary Breast and/or Ovarian

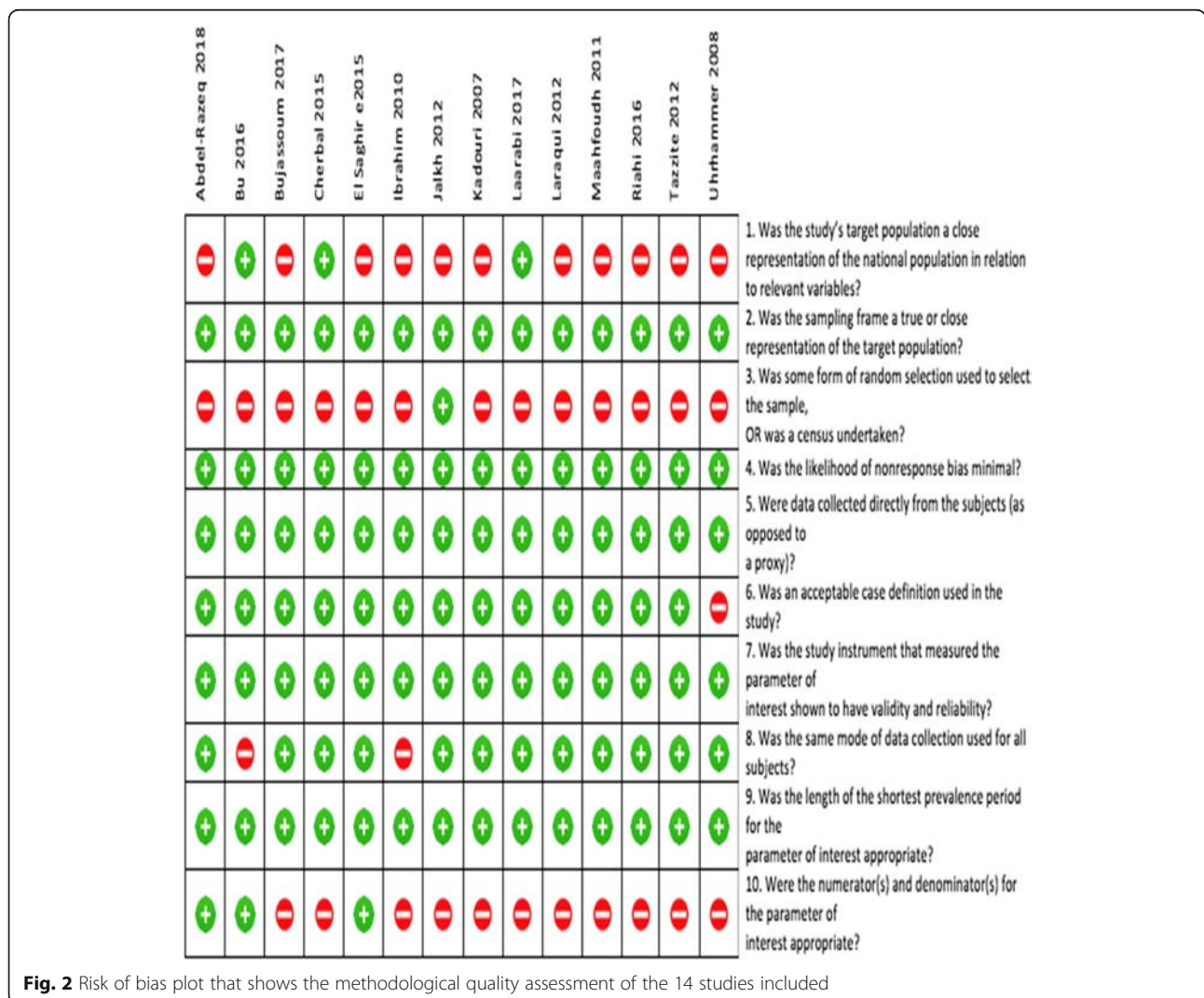
Cancer (HBOC) patients, and a single study included only Hereditary Ovarian Cancer (HOC) patients. Seven studies investigated both BRCA1 and BRCA2 gene mutations, six studies had data on only BRCA1 gene mutation and one study was exclusively on BRCA2 mutations. There were variation in the methods used to detect BRCA mutations. Three studies used direct sequencing, while others used varying types of methods.

Risk of Bias

Of the 14 articles included in our study, eight studies were found to have moderate risk of bias [4, 17–23], and six had lower risk of bias [5, 7, 24–27]. In term of the external validity components, only three articles were considered to have a good external validity [5, 25, 27] (See Fig. 2).

Quantitative synthesis

From studies reported total BRCA mutation cases, the overall pooled prevalence of BRCA among breast and/or



ovarian cancer based on QEM was 20% (95% CI: 7–36%) [4, 5, 7, 17–27] (Fig. 3a). The pooled prevalence of BRCA1 mutation among hereditary breast and/ or

ovarian cancer was 12% (95% CI: 4–21%) (Fig. 3b) [4, 5, 7, 17, 19–25]. The estimated pooled prevalence of BRCA2 was 12% (95% CI: 4–25%) based on five studies

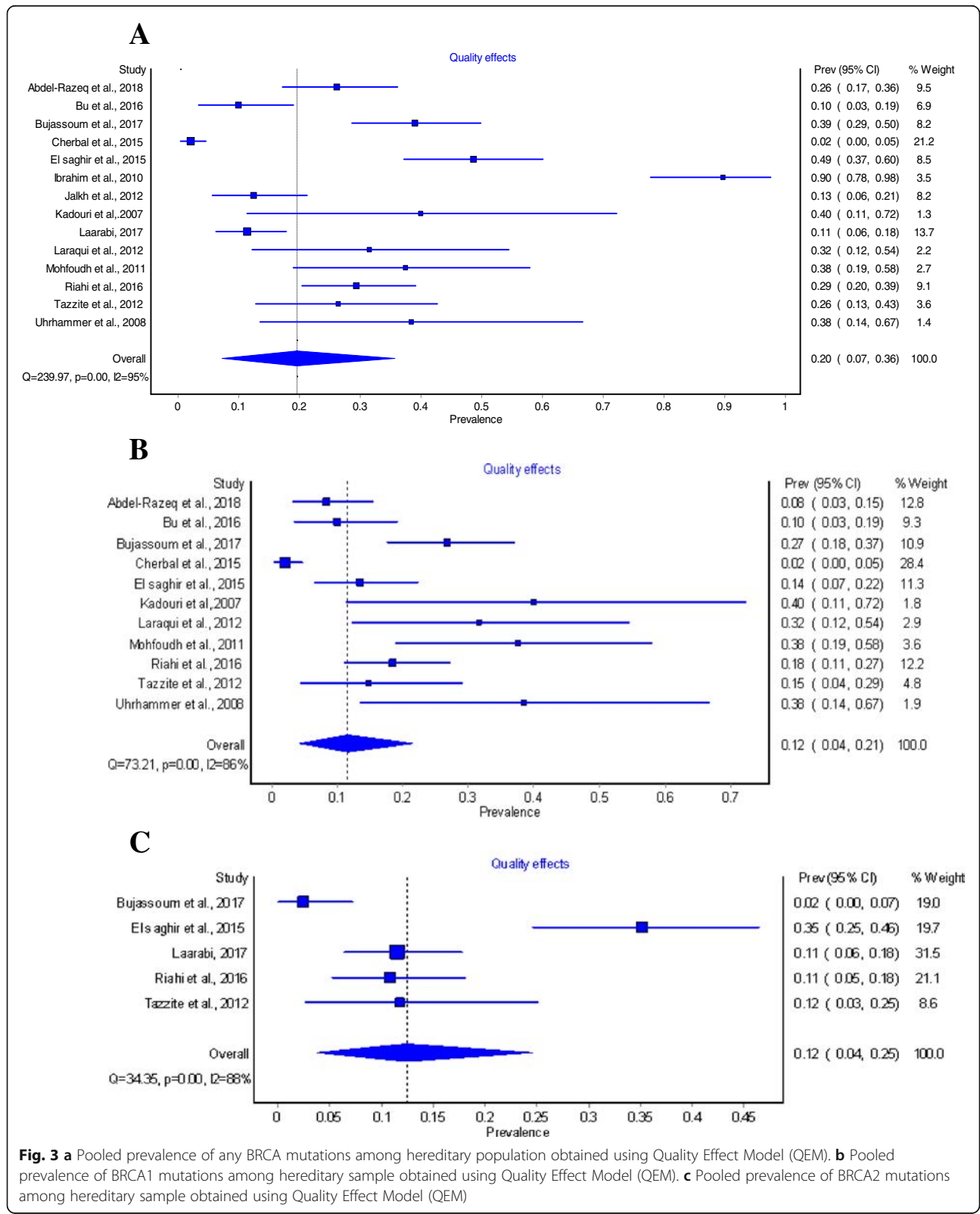


Fig. 3 a Pooled prevalence of any BRCA mutations among hereditary population obtained using Quality Effect Model (QEM). **b** Pooled prevalence of BRCA1 mutations among hereditary sample obtained using Quality Effect Model (QEM). **c** Pooled prevalence of BRCA2 mutations among hereditary sample obtained using Quality Effect Model (QEM)

reported such mutation in the HBOC population [7, 17, 21, 22, 27] (Fig. 3c). Further, six studies reported prevalence of BRCA mutation among non-hereditary sample [4, 5, 7, 18, 22, 23]. The pooled prevalence in this population was estimated to be 10% (95% CI: 0–28%).

Of all 14 studies included, 13 reported prevalence of BRCA among breast cancer patients and the pooled prevalence was 21% (95% CI: 6–40%) [4, 5, 7, 17, 19–26]. Of this, the prevalence of BRCA1 mutation alone among breast cancer patients was 11% (95% CI: 4–21%) [4, 5, 7, 17, 19–25]. Likewise, the prevalence of BRCA2 mutations among breast cancer patients was 17% (95% CI: 9–27%) [7, 17, 21, 22, 24]. Only one study reported the prevalence of BRCA1 mutations among ovarian cancer patients which was in Algeria [25] with a prevalence

of 1% (95% CI: 0–2%). Three studies [17, 22, 27] out of 14 studies report a prevalence of BRCA1 or BRCA2 among both Breast and Ovarian Cancer patients, the pooled prevalence was 9% (95% CI: 0–25%).

All the estimates provided above are QEM based to adjust for bias in individual studies. However, the Random Effect Model (REM) is a commonly used and is recommended by Cochrane group as the choice of model when there is substantial heterogeneity between studies included in a meta-analysis [12]. We therefore used REM as a sensitivity method to compare the QEM estimates. Table 2 shows a comparison between QEM and REM estimates, which were not much different.

We repeated the primary analysis of overall pooled prevalence of BRCA among hereditary breast or/and

Table 2 Comparison between Quality Effect Model and the Random Effect Model results

	Quality effect model			Random effect model		
	No. of studies (patients)	Prevalence (CI 95%)	I ² %	No. of studies (patients)	Prevalence (CI 95%)	I ² %
All eligible studies	14 (917)	20% (7–36%)	94.6%	14 (917)	63% (17–44%)	94.6%
Risk of Bias						
Low ROB	6 (604)	11% (1–27%)	94.7%	6 (604)	66% (4–31%)	94.7%
Moderate ROB	8 (313)	40% (21–60%)	87.1%	2 (313)	63% (26–59%)	87.1%
Studies with good external validity	3 (374)	5% (0–14%)	85.5%	3 (374)	49% (1–16%)	85.5%
Gene mutations						
Both BRCA1 and BRCA2	7 (477)	34% (18–52%)	93.2%	7 (477)	78% (22–56%)	93.2%
BRCA1	11 (684)	19% (7–36%)	92.8%	11 (684)	59% (15–42%)	92.8%
BRCA2	6 (488)	27% (16–40%)	87.4%	6 (488)	75% (18–42%)	87.4%
Target population						
HBOC	3 (348)	7% (0–20%)	91.8%	3 (348)	55% (0–25%)	91.8%
HBC	11 (569)	32% (18–47%)	90.8%	10 (550)	65% (23–50%)	90.8%
HOC	1 (192)	2% (0–5%)	0	1 (192)	33% (0–5%)	0
Geographic Location						
Levant	4 (240)	28% (11–49%)	87.9%	4 (240)	63% (13–49%)	87.9%
GCC	2 (142)	22% (0–58%)	93.9%	2 (142)	24% (0–56%)	93.9%
North Africa	8 (535)	16% (0–43%)	96.2%	8 (535)	64% (11–54%)	96.2%
Sample size						
< 100	12 (603)	29% (16–44%)	89.9%	12 (603)	62% (21–48%)	89.9%
≥ 100	2 (314)	5% (0–16%)	91.4%	2 (314)	52% (0–17%)	91.4%
Year of recruitment						
≤ 2011	10 (467)	25% (8–47%)	93.1%	10 (467)	60% (17–52%)	93.1%
2012–2018	5 (572)	13% (1–31%)	95.6%	5 (572)	71% (5–37%)	95.6%
Type of mutation						
Deleterious	8 (532)	26% (11–44%)	93.6%	8 (532)	71% (17–49%)	93.6%
Deleterious and VUS	2 (266)	10% (0–100%)	98.8%	2 (266)	73% (0–85%)	98.8%
Deleterious, VUS, and Polymorphisms	4 (119)	20% (4–43%)	72.4%	4 (119)	46% (7–57%)	85.0%

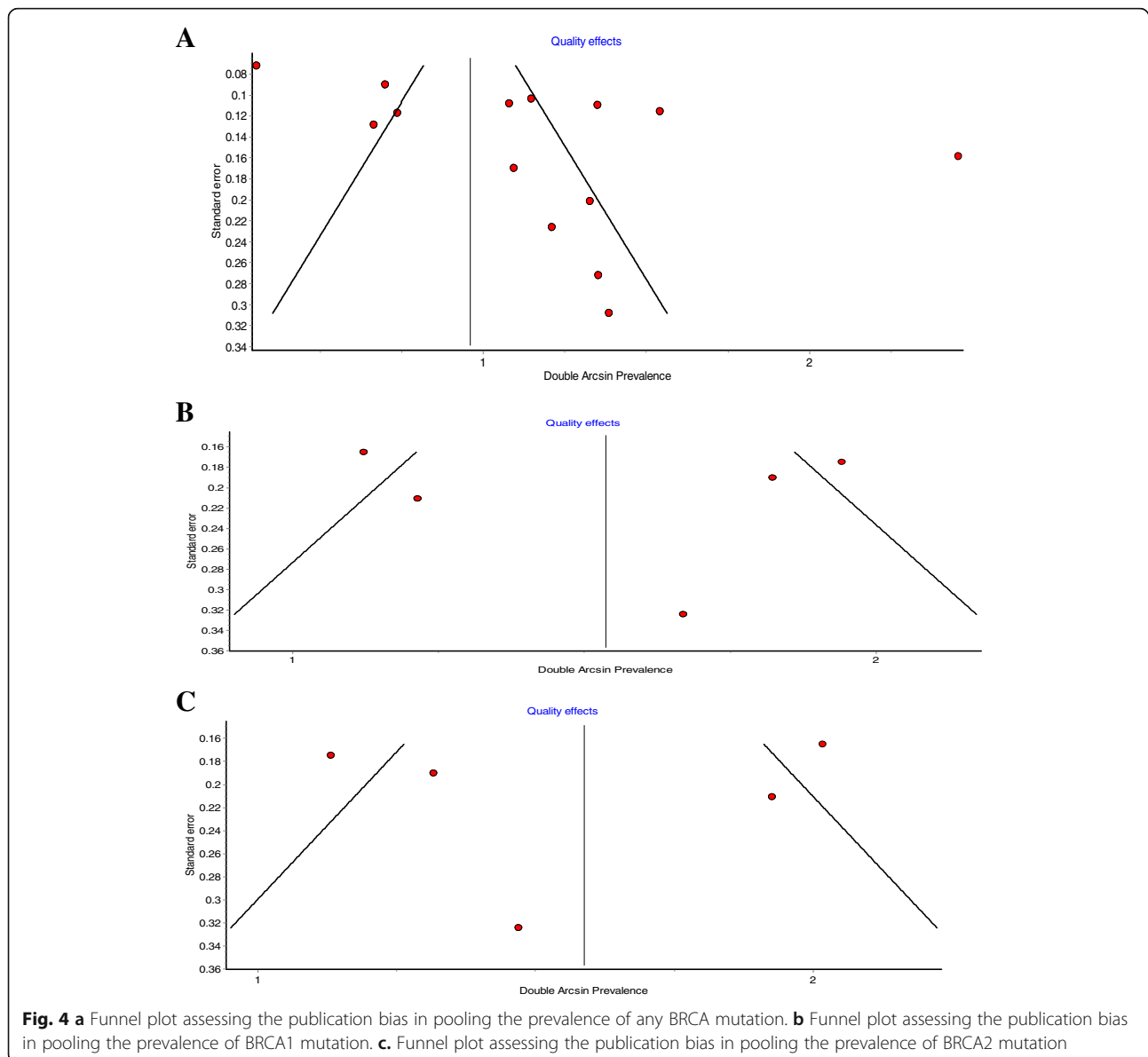
ovarian cancer by only including the low risk of bias studies to estimate the prevalence of high quality studies [5, 7, 24–27]. The pooled prevalence of BRCA mutations among the high quality studies were estimated to be 11% (95CI: 1–27%). This compared to the overall pooled prevalence including all studies was lower and much more comparable with the global estimates.

Quality effect model (QEM) used for subgroup analysis from different geographical locations in GCC, Levant and North Africa to understand any geographic variations in the prevalence of BRCA mutations among hereditary breast or/and ovarian cancer patients. The highest pooled prevalence of BRCA mutations was estimated in Levant region the pooled prevalence was 28% (95% CI: 11–49%) followed by the Gulf region where the

pooled prevalence was 22% (95% CI: 0–58%). Comparable prevalence in the North African region was lower than other regions, as it was estimated to be 16% (95%CI: 0–44%). These estimates did not differ statistically based on Z- test for proportions.

Heterogeneity assessment

Significant heterogeneity was encountered throughout the analysis as indicated by the *p* values of the Cochran Q statistics and *I*² statistics values. For instance, the studies [4, 5, 7, 17–27] included to pool the prevalence for BRCA mutations had a Cochran Chi-square *p* value of < 0.001 and *I*² of 95%. Likewise, there were significant heterogeneity across the studies used to obtain the pooled prevalence for BRCA1 among total HBOC



(Chi-square = 69.2, p -value < 0.001, $I^2 = 86\%$) [4, 5, 7, 17, 19–25]. For BRCA2 heterogeneity between the studies were also substantial (Chi-square = 23.5, p -value < 0.001, $I^2 = 79.7\%$) [7, 17, 21, 22, 27].

For total BRCA mutations among general population, there was a considerable heterogeneity across studies (Chi-square = 70, P value = 0.001, I-square = 94.3%) and the pooled prevalence was 35% (95% %CI: 16–55%). The pooled prevalence of BRCA1 mutation among Breast Cancer Patients was 11% (95% CI: 4–21%) [4, 5, 7, 17, 19–25], and there was a substantial heterogeneity across the studies (Chi-square = 79.3, P value < 0.001, I-square = 87.38%). As for the prevalence of BRCA 2 mutation among Breast Cancer patients, data was reported from 5 studies [7, 17, 21, 22, 24]. Where the pooled prevalence was 17% (95% CI: 9–27%), and significant heterogeneity was found (Chi-square = 18.5, P value = 0.001, I square = 78.39%). Only one study [25] reported BRCA1 among ovarian cancer and no studies reported BRCA2 among ovarian cancer patients, so heterogeneity was not assessed. For BRCA1 or/and BRCA2 among patients with both Breast and Ovarian cancer, the pooled prevalence was 9% (95% CI: 0–25%) [17, 22, 27]. For heterogeneity, there was large heterogeneity detected (Chi-square = 19, P value < 0.001, I-square = 89.4%).

Publication Bias

Publication bias was investigated using classical funnel plot, where an asymmetry indicated potential publication bias (Fig. 4a, b and c). As for BRCA1 and BRCA2 mutations estimates in hereditary patients, funnel plots showed a potential publication bias. However, Hunter et al. [28] suggested that conventional funnel plots, that assess publication bias, are inaccurate for prevalence meta-analysis. We are unsure about the asymmetry observed in our study if it is true reflection of publication

bias or simply an over-estimate as argued by Hunter et al. [28].

Discussion

This study included 14 eligible studies from nine Arab countries, to systematically review the prevalence of BRCA mutations. The study revealed that one in five hereditary breast or/and ovarian cancer patients in the Arab region are likely to have BRCA mutations. The prevalence BRCA2 were more common (17%) than BRCA1 mutations (11%) in the region. The prevalence of BRCA mutations were also noted to vary considerably from other populations [31–35]. For instance, prevalence of BRCA gene mutations in India, Japan, Hispanics in USA, and Spain were substantially higher than that of the Arab populations, whilst Iran, Mexico, Sweden, Germany, Australia and Turkey reported significantly lower prevalence (Table 3).

There were variability in the prevalence of BRCA mutations between different areas of the Arab region. Such differences might be explained by biological differences in the BRCA gene prevalence [23], varying age at onset in the study population with varying proportion of younger population in different parts of the Arab world. This was further amplified by the fact that the diagnosis at a young age is an indication for the referral for BRCA testing. Studies have also suggested that there is a variation of BRCA prevalence among different ethnicities [41], while others found that the prevalence of BRCA mutations is the same across different ethnicities [42]. Family history of breast or ovarian cancer could be a significantly strong predictor for being a carrier of BRCA gene mutations [43] as this could be another reason for having a variation in the prevalence of mutations.

Table 3 Comparison between the pooled prevalence in Arab countries with other regions around the world

Author (year)	Country	Sample size	BRCA mutation prevalence	z-score	P -value
Keshavarzi et al. (2011)	Iran	85	7%	15.429	< 0.0001
Vaca-Panigua et al. (2012)	Mexico	39	7.7%	13.97	< 0.0001
Loman et al. (2001)	Sweden	234	8.9%	11.81	< 0.0001
Hamann et al. (2003)	Germany	23	13%	6.30	< 0.0001
Alsop et al. (2012)	Australia	1001	14.1%	5.134	< 0.0001
Yazici et al. (2000)	Turkey	53	15.1%	4.144	< 0.0001
Sharma et al., (2014)	Kansas, USA	207	15.4%	3.86	0.0001
Han et al. (2013)	Korea	775	21.7%	1.25	0.2117
Hedau et al. (2004)	India	24	25%	3.497	= 0.0005
Sugano et al. (2008)	Japan	135	26.7%	4.59	< 0.0001
Weitzel et al. (2005)	Hispanics in USA	110	30.9%	7.14	< 0.0001
Hoya et al. (2001)	Spain	102	43%	14.07	< 0.0001

Our findings have important clinical implications. Firstly, the previously held notion that Arab population has less frequent BRCA mutations compared to other regions of the world [7] may not be entirely true. It is also possible that the BRCA mutations may be linked to the increases in the breast and ovarian cancer cases in Arab countries [29] along with other reasons such as weaker screening programs [44]. Increasing incidences in the breast and ovarian cancer cases in the region could also be associated with having children at older age, increased use of oral contraceptives and reduced breastfeeding as well as increasing level of obesity and physical inactivity [45, 46]. Appropriate risk assessment strategies may help manage and control the risk of breast and ovarian cancer, targeted particularly in the region with higher BRCA mutations [5].

Our study has some limitations. There were paucity of data on BRCA mutations in most part of the Arab world. All of the 14 studies included in this paper came from nine countries and the rest of the 14 countries had no published reports on BRCA prevalence. As for the quality of studies included, most of them had moderate to lower risk of bias, but with higher risk of external validity. This indicates that the studies may not have been well representative of the respective study populations from where these reports originated. There were also substantial heterogeneity among the studies, that presented a major threat to the validity of the pooled estimates. High quality epidemiological studies in Arab populations are, thus warranted.

Conclusion

We conclude that one in five HBOC patients in the Arab world have BRCA mutations. The BRCA2 is the most prevalent type mutation among breast cancer patients in the Arab region, with an estimated prevalence was 17% with a higher pooled prevalence of BRCA mutations in the Levant Region 28%. When we compared with studies from different parts of the world the Arab world appear to have different profiles with varying BRCA frequencies. High quality epidemiologic studies are warranted to understand the impact of the BRCA gene mutations and their role in breast and ovarian cancer incidence, risk and prognosis in the Arab world that is experiencing a steady increase in the cancer incidence.

Abbreviations

ASR: Age-standardized mortality rate; BART: Comprehensive BRCA analysis and BRCA analysis rearrangement test; BC: Breast cancer; BRCA1: Breast cancer 1 gene; BRCA2: Breast cancer 2 gene; CIS: Carcinoma in situ; CS: Capture sequencing; CSS: Conventional individual exon-by-exon sanger sequencing; DHPLC: Denaturing high performance liquid chromatography; EOC: Epithelial ovarian cancer; HAC: Heteroduplex assay confirmation; HBC: Hereditary breast cancer; HBOC: Hereditary breast or/and ovarian cancer; HOC: Hereditary ovarian cancer; MLPA: Multiple ligation dependent

probe amplification; NGS: Next generation sequencing; OV: Ovarian cancer; PCR: Polymerase chain reaction; SS: Sanger sequencing; SSCP: Single strand conformation polymorphism assay; TCS: Targeted capture sequencing; TS: Target screening for exon 10 in BRCA; YLL: Year of life lost

Acknowledgements

Not applicable.

Funding

The publication of this article was funded by the Qatar National Library.

Availability of data and materials

Input data for the analyses are available from the corresponding author on request.

Authors' contributions

KA, NA, WA design the study under the close supervision of LT. LT did the protocol registration. KA, NA and WA did the database searches, study selection, data extraction and quality assessment. Data analysis were carried out by KA, WA and NA under the close direction of LT. KA, NA and WA prepared the first draft under the direction of LT and it was critically revised by LT. All authors read and approved the final manuscript.

Authors' information

Khadiga, Noor and Wifag are recent graduates of Bachelors of Public Health program from Qatar University. Lukman Thalib is a Professor of Biostatistics at Qatar University.

Ethics approval and consent to participate

Not applicable.

Consent for publication

Not applicable.

Competing interests

The authors declare that they have no competing interests.

Publisher's Note

Springer Nature remains neutral with regard to jurisdictional claims in published maps and institutional affiliations.

Received: 11 October 2018 Accepted: 13 March 2019

Published online: 21 March 2019

References

- Morrison S, Cremin C, Tomiak E, Allanson JE, Carroll JC. Hereditary Breast and Ovarian Cancer (BRCA1/BRCA2) [Internet]. Genetics Education Canada – Knowledge Organization (GEC-KO). 2016. Available from: <https://geneticseducation.ca/educational-resources/gec-ko-on-the-run/hereditary-breast-and-ovarian-cancer-brca1brca2/>.
- Larsen MJ, Thomassen M, Gerdes A-M, Kruse TA. Hereditary breast Cancer: clinical, pathological and molecular characteristics. *Breast Cancer*. 2014;8:145–55.
- Toss A, Tomasello C, Razzaboni E, Contu G, Grandi G, Cagnacci A, et al. Hereditary ovarian cancer: Not only BRCA 1 and 2 Genes. *BioMed Research International* [Internet]. 2015;2015. doi:<https://doi.org/10.1385/1-59259-328-3:041>
- Laraqui A, Uhrhammer N, Lahlou-Amine I, Rhaffouli HE, Baghdadi JE, Dehayni M, et al. Mutation screening of the BRCA1 gene in early onset and familial breast/ovarian Cancer in Moroccan population. *Int J Med Sci* [Internet]. 2013;10(1):60–7. <https://doi.org/10.7150/ijms.5014>.
- Bu R, Siraj AK, Al-Obaisi KA, Beg S, Hazmi MA, Ajarim D, et al. Identification of novel BRCA founder mutations in middle eastern breast cancer patients using capture and sanger sequencing analysis. *Int J Cancer* [Internet]. 2016; 139(5):1091–7. <https://doi.org/10.1002/ijc.30143>.
- Arpino G, Pensabene M, Condello C, Ruocco R, Cerillo I, Lauria R, et al. Tumor characteristics and prognosis in familial breast cancer. *BMC Cancer* [Internet]. 2016;16. doi: <https://doi.org/10.1186/s12885-016-2962-1>
- El Saghir NS, Zgheib NK, Assi HA, Khoury KE, Bidet Y, Jaber SM, et al. BRCA1 and BRCA2 mutations in ethnic Lebanese Arab women with high hereditary risk breast Cancer. *Oncologist* [Internet]. 2015;20(4):357–64.

8. Alhuqail A, Alzahrani A, Almubarak H, Al-Qadheeb S, Alghofaili L, Almoghribi N, et al. High prevalence of deleterious BRCA1 and BRCA2 germline mutations in Arab breast and ovarian Cancer patients. *Breast Cancer Res Treat* [Internet]. 2018;168(3):695–702. <https://doi.org/10.1007/s10549-017-4635-4>.
9. Liberati A, Altman DG, Tetzlaff J, Mulrow C, Gøtzsche PC, Ioannidis JP, et al. The PRISMA Statement for Reporting Systematic Reviews and Meta-Analyses of Studies That Evaluate Health Care Interventions: Explanation and Elaboration. *Plos Medicine* [Internet]. 2009;6(7).
10. Stroup DF, Berlin JA, Morton SC. Meta-analysis of observational studies in epidemiology: a proposal for reporting. *Jama* [Internet]. 2000;283(15):2008–12. <https://doi.org/10.1001/jama.283.15.2008>.
11. Sika NM. *The League of Arab States*. In: *The Democratization of International Institutions*. Routledge Taylor & Francis Group; 2014. p. 391–397.
12. Deeks JJ, Higgins JP, Altman DG. Chapter 9: Analysing data and undertaking meta-analyses; 2011.
13. Hoy D, Brooks P, Woolf A, Blyth F, March L, Bain C, et al. Assessing risk of bias in prevalence studies: modification of an existing tool and evidence of interrater agreement. *J Clin Epidemiol* [Internet]. 2012;65(9):934–9. <https://doi.org/10.1016/j.jclinepi.2011.11.014>.
14. Barendregt J. *Metaxl* [Internet]. *EpiGear*. 2016; Available from: https://www.epigear.com/index_files/metaxl.html.
15. Higgins JPT, Thompson SG, Deeks JJ, Altman DG. Measuring inconsistency in meta-analyses. *BMJ* [Internet]. 2003;327(7414):557–60. <https://doi.org/10.1136/bmj.327.7414.557>.
16. Doi SA, Thalib L. A quality-effects model for meta-analysis. *Epidemiol* [Internet]. 2008;19(1):94–100. <https://doi.org/10.1097/EDE.0b013e31815c24e7>.
17. Bujassoum SM, Bugrein HA, Sulaiman RA. Genotype and Phenotype Correlation of Breast Cancer in BRCA Mutation Carriers and Non-Carriers. *J Cancer Sci Ther* [Internet]. 2017;9(3). doi: <https://doi.org/10.4172/1948-5956.1000442>
18. Ibrahim SS, Hafez EE, Hashishe MM. Presymptomatic breast cancer in Egypt: role of BRCA1 and BRCA2 tumor suppressor genes mutations detection. *J Exp Clin Cancer Res* [Internet]. 2010;29(1):82. doi: <https://doi.org/10.1186/1756-9966-29-82>
19. Kadouri L, Bercovich D, Elimelech A, Lerer I, Sagi M, Glusman G, et al. A novel BRCA-1 mutation in Arab kindred from east Jerusalem with breast and ovarian cancer. *BMC Cancer* [Internet]. 2007;7(1). doi: <https://doi.org/10.1186/1471-2407-7-14>
20. Mahfoudh W, Bouaouina N, Ahmed SB, Gabbouj S, Shan J, Mathew R, et al. Hereditary breast cancer in middle eastern and north African (MENA) populations: identification of novel, recurrent and founder BRCA1 mutations in the Tunisian population. *Mol Biol Rep* [Internet]. 2011;39(2):1037–46. <https://doi.org/10.1007/s11033-011-0829-8>.
21. Riahi A, Ghourabi ME, Fourati A, Chaabouni-Bouhamed H. Family history predictors of BRCA1/BRCA2 mutation status among Tunisian breast/ovarian cancer families. *Breast Cancer* [Internet]. 2016;24(2):238–44. <https://doi.org/10.1007/s12282-016-0693-4>.
22. Tazite A, Jouhadi H, Nadifi S, Aretini P, Falaschi E, Collavoli A, et al. BRCA1 and BRCA2 germline mutations in Moroccan breast/ovarian cancer families: novel mutations and unclassified variants. *Gynecologic Oncol* [Internet]. 2012;125(3):687–92. <https://doi.org/10.1016/j.ygyno.2012.03.007>.
23. Uhrhammer N, Abdelouhab A, Lafarge L, Feillel V, Dib AB, Bignon Y-J. BRCA1 mutations in Algerian breast cancer patients: high frequency in young, sporadic cases. *Int J Med Sci* [Internet]. 2008;5(4):197–202. <https://doi.org/10.7150/ijms.5.197>.
24. Abdel-Razeq H, Al-Omari A, Zahran F, Arun B. Germline BRCA1/BRCA2 mutations among high risk breast cancer patients in Jordan. *BMC Cancer* [Internet]. 2018;18(1). doi: <https://doi.org/10.1186/s12885-018-4079-1>
25. Cherbal F, Gaceb H, Mehemmi C, Bakour R, Boualga K, Mahfouf H. Prevalence of BRCA1 and BRCA2 common mutations among Algerian Patients with Breast and/or Ovarian cancer. *American Society of Human Genetics* [internet]. 2015. Available from https://www.researchgate.net/publication/280948479_PgmNr_2670_Prevalence_of_BRCA1_and_BRCA2_common_mutations_among_Algerian_Patients_with_Breast_andor_Ovarian_cancer
26. Jalkh N, Nassar-Slaba J, Chouery E, Salem N, Uhrhammer N, Golmard L, et al. Prevalance of BRCA1 and BRCA2 mutations in familial breast cancer patients in Lebanon. *Hereditary Cancer Clin Pract* [Internet]. 2012;10(1). <https://doi.org/10.1186/1897-4287-10-7>
27. Laarabi F-Z, Ratbi I, Elalaoui SC, Mezzouar L, Doubaj Y, Bouguenouch L, et al. High frequency of the recurrent c.1310_1313delAAGA BRCA2 mutation in the North-East of Morocco and implication for hereditary breast–ovarian cancer prevention and control. *BMC Res Notes* [Internet]. 2017;10(1). doi: <https://doi.org/10.1186/s13104-017-2511-2>
28. Hunter JP, Saratzis A, Sutton AJ, Boucher RH, Sayers RD, Bown MJ. In meta-analyses of proportion studies, funnel plots were found to be an inaccurate method of assessing publication bias. *J Clin Epidemiol* [Internet]. 2014;67(8): 897–903. <https://doi.org/10.1016/j.jclinepi.2014.03.003>.
29. Chouchane L, Boussen H, Sastry KSR. Breast cancer in Arab populations: molecular characteristics and disease management implications. *Lancet Oncol* [Internet]. 2013;14(10). doi: [https://doi.org/10.1016/s1470-2045\(13\)70165-7](https://doi.org/10.1016/s1470-2045(13)70165-7)
30. Sharma P, Klemp JR, Kimler BF, Mahnken JD, Geier LJ, Khan QJ, et al. Germline BRCA mutation evaluation in a prospective triple-negative breast cancer registry: implications for hereditary breast and/or ovarian cancer syndrome testing. *Breast Cancer Res Treat*. 2014;145(3):707–14. <https://doi.org/10.1007/s10549-014-2980-0>.
31. Han S, Kim S, Kang E, Park SK, Ahn S, Lee MH, et al. The prevalence of BRCA mutations among familial breast cancer patients in Korea: results of the Korean hereditary breast cancer study. *Familial Cancer*. 2012;12(1):75–81. <https://doi.org/10.1007/s10689-012-9578-7>.
32. Hamann U, Liu X, Bungardt N, Ulmer HU, Bastert G, Sinn HP. Similar contributions of BRCA1 and BRCA2 germline mutations to early-onset breast cancer in Germany. *Eur J Hum Genet*. 2003;11:464–7. <https://doi.org/10.1038/sj.ejhg.5200988>.
33. Loman N, Johannsson O, Kristofferson U, Olsson H, Borg Å. Family history of breast and ovarian cancers and BRCA1 and BRCA2 mutations in a population-based series of early-onset breast Cancer. *J Natl Cancer Inst*. 2001;93(16):1215–23. <https://doi.org/10.1093/jnci/93.16.1215>.
34. Sugano K, Nakamura S, Ando J, Takayama S, Kamata H, Sekiguchi I, Ubukata M, Kodama T, Arai M, Kasumi F, Hirai Y, Ikeda T, Jinno H, Kitajima M, Aoki D, Hirasawa A, Takeda Y, Yazaki K, Fukutomi T, Kinoshita T, Tsunematsu R, Yoshida T, Izumi M, Umezawa S, Yagata H, Komatsu H, Arimori N, Matoba N, Gondo N, Yokoyama S, Miki Y. Cross-sectional analysis of germline BRCA1 and BRCA2 mutations in Japanese patients suspected to have hereditary breast/ovarian cancer. *Jpn Cancer Assoc*. 2008;99(10):1967–76. <https://doi.org/10.1111/j.1349-7006.2008.00944.x>.
35. Brewer HR, Jones ME, Schoemaker MJ, Ashworth A, Swerdlow AJ. Family history and risk of breast cancer: an analysis accounting for family structure. *Breast Cancer Res Treat*. 2017;165(1):193–200 <https://doi.org/10.1007/s10549-017-4325-2>.
36. Donnelly TT, Al-Khater AH, Al-Bader SB, Al-Kuwari MG, Abdul Malik MA, Al-Meer N, Singh R. Perceptions of Arab men regarding female breast cancer screening examinations-findings from a Middle East study. *PLoS One*. 2017; 12(7):e0180696. <https://doi.org/10.1371/journal.pone.0180696>.
37. Akeel R, El Darsa H, Anouti B, Mukherji D, Temraz S, Raslan R, Tfayli A, Assi H. (2017). Anxiety, depression and quality of life in breast Cancer patients in the Levant. *Asian Pac J Cancer Prev*. 18(10), 2809-2816. Doi: <https://doi.org/10.22034/APJCP.2017.18.10.2809>.
38. Lakkis, N. A., Adib, S. M., Hamadeh, G., El Jarrah, R., & Osman, M. H. (2017). Sociological transition and breast Cancer in the Arab world: the experience of Lebanon. *Asian Pac J Cancer Prev*. 18(5), 1357-1364. Doi:<https://doi.org/10.22034/APJCP.2017.18.5.1357>.
39. El-Zaemey S, Nagi N, Fritschi L, Heyworth J. Breast cancer among Yemeni women using the National Oncology Centre Registry 2004–2010. *Cancer Epidemiol*. 2012;36(3):249–53. <https://doi.org/10.1016/j.canep.2012.01.006>.
40. Gupta I, Burney I, Al-Moundhri MS, Tamimi Y. Molecular genetics complexity impeding research progress in breast and ovarian cancers. *Molecular and clinical oncology*. 2017;7(1):3–14.
41. Balmaña J, Diez O, Rubio I, Castiglione M. BRCA in breast cancer: ESMO clinical practice guidelines. *Ann Oncol*. 2010;24(5):v20–2.
42. Hall MJ, Reid JE, Burbidge LA, Pruss D, Deffenbaugh AM, Frye C, et al. BRCA1 and BRCA2 mutations in women of different ethnicities undergoing testing for hereditary breast-ovarian cancer. *Cancer*. 2009; 115(10):2222–33.
43. Neuhausen SL. Ethnic differences in cancer risk resulting from genetic variation. *Cancer*. 1999;86:2575–82. [https://doi.org/10.1002/\(SICI\)1097-0142\(19991201\)86:11+<2575::AID-CNCR15>3.0.CO;2-F](https://doi.org/10.1002/(SICI)1097-0142(19991201)86:11+<2575::AID-CNCR15>3.0.CO;2-F).

44. Donnelly TT, Al Khater A, Al-Bader SB, Al Kuwari MG, Al-Meer N, Malik M, et al. Arab Women's breast Cancer screening practices: a literature review. *Asian Pac J Cancer Prev.* 2013;14(8):4519–28. <https://doi.org/10.7314/APJCP.2013.14.8.4519>.
45. Lakkis NA, Adib SM, Hamadeh G, El Jarrah R, Osman MH. Sociological Transition and Breast Cancer in the Arab World: the Experience of Lebanon. *Asian Pac J Cancer Prev.* 2017;18(5):1357–1364. doi:<https://doi.org/10.22034/APJCP.2017.18.5.1357>
46. Jemal A, Bray F, Center MM, Ferlay J, Ward E, Foreman D. Global Cancer statistics. *CA Cancer J Clin.* 2011;61(2):69–90.

Ready to submit your research? Choose BMC and benefit from:

- fast, convenient online submission
- thorough peer review by experienced researchers in your field
- rapid publication on acceptance
- support for research data, including large and complex data types
- gold Open Access which fosters wider collaboration and increased citations
- maximum visibility for your research: over 100M website views per year

At BMC, research is always in progress.

Learn more biomedcentral.com/submissions

