

Common and Low Frequency Variants in MERTK are Independently Associated with Multiple Sclerosis Susceptibility with Discordant Association Dependent upon HLA-DRB1*15:01 Status

Author

Binder, Michele D, Fox, Andrew D, Merlo, Daniel, Johnson, Laura J, Giuffrida, Lauren, Calvert, Sarah E, Akkermann, Rainer, Ma, Gerry ZM, Perera, Ashwyn A, Gresle, Melissa M, Laverick, Louise, Foo, Grace, Fabis-Pedrini, Marzena J, Spelman, Timothy, Jordan, Margaret A, Baxter, Alan G, Foote, Simon, Butzkueven, Helmut, Kilpatrick, Trevor J, Field, Judith, ANZGene Consortium

Published

2016

Journal Title

PLoS Genetics

Version

Version of Record (VoR)

DOI

[10.1371/journal.pgen.1005853](https://doi.org/10.1371/journal.pgen.1005853)

Rights statement

© 2016 Binder et al. This is an open access article distributed under the terms of the Creative Commons Attribution License, which permits unrestricted use, distribution, and reproduction in any medium, provided the original author and source are credited.

Downloaded from

<http://hdl.handle.net/10072/404198>

Griffith Research Online

<https://research-repository.griffith.edu.au>

RESEARCH ARTICLE

Common and Low Frequency Variants in *MERTK* Are Independently Associated with Multiple Sclerosis Susceptibility with Discordant Association Dependent upon *HLA-DRB1*15:01* Status



click for updates

Michele D. Binder^{1,2*}, Andrew D. Fox^{1,3}, Daniel Merlo², Laura J. Johnson¹, Lauren Giuffrida^{2^{na}}, Sarah E. Calvert¹, Rainer Akkermann², Gerry Z. M. Ma^{1,2^{nb}}, ANZgene[¶], Ashwyn A. Perera¹, Melissa M. Gresle⁴, Louise Laverick⁴, Grace Foo⁴, Marzena J. Fabis-Pedrin⁵, Timothy Spelman⁴, Margaret A. Jordan⁶, Alan G. Baxter⁶, Simon Foote⁷, Helmut Butzkueven⁴, Trevor J. Kilpatrick^{1,2}, Judith Field^{1,2}

1 Multiple Sclerosis Division, The Florey Institute of Neuroscience and Mental Health, Parkville, Victoria, Australia, **2** Department of Anatomy and Neuroscience, University of Melbourne, Parkville, Victoria, Australia, **3** Bioinformatics Core, The Florey Institute of Neuroscience and Mental Health, Parkville, Victoria, Australia, **4** Department of Medicine, University of Melbourne, Parkville, Victoria, Australia, **5** Western Australian Neuroscience Research Institute, Nedlands, Western Australia, Australia, **6** Comparative Genomics Centre, James Cook University, Townsville, Queensland, Australia, **7** John Curtin School of Medical Research, Australian National University, Acton, Australian Capital Territory, Australia

^{na} Current address: Cancer Immunology Program, Peter MacCallum Cancer Centre, East Melbourne, Victoria, Australia

^{nb} Current address: MRC Centre for Regenerative Medicine, The University of Edinburgh, Edinburgh, United Kingdom

¶ Membership of ANZgene is provided in the Acknowledgments.

* mbinder@florey.edu.au

 OPEN ACCESS

Citation: Binder MD, Fox AD, Merlo D, Johnson LJ, Giuffrida L, Calvert SE, et al. (2016) Common and Low Frequency Variants in *MERTK* Are Independently Associated with Multiple Sclerosis Susceptibility with Discordant Association Dependent upon *HLA-DRB1*15:01* Status. *PLoS Genet* 12(3): e1005853. doi:10.1371/journal.pgen.1005853

Editor: Greg Gibson, Georgia Institute of Technology, UNITED STATES

Received: October 14, 2015

Accepted: January 18, 2016

Published: March 18, 2016

Copyright: © 2016 Binder et al. This is an open access article distributed under the terms of the [Creative Commons Attribution License](https://creativecommons.org/licenses/by/4.0/), which permits unrestricted use, distribution, and reproduction in any medium, provided the original author and source are credited.

Data Availability Statement: The GEO accession number for the RNAseq data from which all samples can be accessed is GSE77598. The NCBI dbVar accession number for the structural variants identified is nstd124. All other relevant data are in the paper and its Supporting Information files.

Funding: This work was supported by the National Multiple Sclerosis Society (US) Grant Number 6007629 to MDB, TJK, JF, HB and ADF; by the Multiple Sclerosis Research Australia Grant Number 13-013 to MDB, JF and TJK; by the National Health

Abstract

Multiple Sclerosis (MS) is a chronic inflammatory demyelinating disease of the central nervous system. The risk of developing MS is strongly influenced by genetic predisposition, and over 100 loci have been established as associated with susceptibility. However, the biologically relevant variants underlying disease risk have not been defined for the vast majority of these loci, limiting the power of these genetic studies to define new avenues of research for the development of MS therapeutics. It is therefore crucial that candidate MS susceptibility loci are carefully investigated to identify the biological mechanism linking genetic polymorphism at a given gene to the increased chance of developing MS. *MERTK* has been established as an MS susceptibility gene and is part of a family of receptor tyrosine kinases known to be involved in the pathogenesis of demyelinating disease. In this study we have refined the association of *MERTK* with MS risk to independent signals from both common and low frequency variants. One of the associated variants was also found to be linked with increased expression of *MERTK* in monocytes and higher expression of *MERTK* was associated with either increased or decreased risk of developing MS, dependent upon *HLA-DRB1*15:01* status. This discordant association potentially extended

and Medical Research Council Grant Number APP1032486 to HB, JF and AGB, and by the Australian Research Council Linkage Grant Number LP110100473 to HB, JF and AGB. The Florey Institute of Neuroscience and Mental Health acknowledges the strong support from the Victorian Government and in particular the funding from the Operational Infrastructure Support Grant. The funders had no role in study design, data collection and analysis, decision to publish, or preparation of the manuscript.

Competing Interests: The authors have declared that no competing interests exist.

beyond MS susceptibility to alterations in disease course in established MS. This study provides clear evidence that distinct polymorphisms within *MERTK* are associated with MS susceptibility, one of which has the potential to alter *MERTK* transcription, which in turn can alter both susceptibility and disease course in MS patients.

Author Summary

Multiple sclerosis (MS) is the most common neurological disease of young Caucasian adults. Oligodendrocytes are the key cell type damaged in MS, a process that is accompanied by loss of the myelin sheath that these cells produce, resulting in demyelination and ultimately in secondary damage to nerve cells. Susceptibility to MS is strongly influenced by genes, and over 100 genes have now been linked with the risk of developing MS. However, surprisingly little is known about the biological mechanism by which any one of these genes increases the probability of developing MS. In this study we have explored in detail the links between one known MS risk gene, *MERTK*, and MS susceptibility. We found that a number of different alterations in the *MERTK* gene are independently associated with the risk of developing MS. One of these changes was also linked with changes in the level of expression of *MERTK* in monocytes, an immune cell type known to be involved in the etiology of MS. In an unexpected result, we found this expression-linked alteration in *MERTK* was either protective or risk-associated, depending on the genotype of the individual at another well known MS risk gene known as *HLA-DRB1*. In addition, we found that not only were alterations in *MERTK* associated with MS susceptibility, but potentially with ongoing disease course, indicating that *MERTK* may be a good target for the development of novel MS therapeutics.

Introduction

Multiple Sclerosis (MS) is an inflammatory demyelinating disease of the central nervous system (CNS). Although the initiating insult in MS remains unknown, it is clear that the pathology of the disease involves a complex interaction between the immune system, neurons and glia, in which cells of the immune system target oligodendrocytes, ultimately resulting in central demyelination and secondary axonal damage.

A genetic basis for MS susceptibility has long been suggested by the observation of an increased familial risk in twins and in first-degree relatives [1], and there is substantial evidence that the increased risk seen in family members of MS patients is not simply the result of shared environment [1–4]. Although estimates of sibling relative risk (λ_s) vary, a recent meta-analysis has calculated λ_s as 16.8, with an overall heritability (h^2) of 54% [5].

The association of MS susceptibility with specific genes began with studies in the 1970s describing an increase in the frequency of certain human leukocyte antigens (HLA) in MS populations [6–8]. The HLA genes are located on chromosome 6 and include the major histocompatibility class (MHC) I and II loci. Improved methods of subtyping HLA loci, as well as studies with increased sample size, have allowed the identification of an extended HLA haplotype, *HLA DRB1*15:01, DQA1*0102, DQB1*0602*, within the MHC class II region that is strongly associated with the risk of developing MS [9–11]. The association between HLA and MS susceptibility remained for many decades the only convincing association with MS risk. The advent of genome-wide association studies (GWAS) in the last decade has significantly

altered the landscape of MS genetics. In 2007, the first MS GWAS detected the first non-HLA loci [Interleukin-2 receptor alpha (*IL2RA*)] to be associated with MS at a genome-wide significance level [12]. A number of GWAS studies of increasing power have since extended the number of loci established as associated with MS risk to 103 [13–15].

One clear finding from MS-GWAS has been that, outside the HLA genes, the majority of the associated variants exert small effects as measured by odds-ratios (ORs <1.10), compared with, for example, the *HLA-DRB1*15:01* (*DR15*) association which has an estimated OR of 3.1 [13]. The combined effect of the known MS-susceptibility loci is estimated to account for only around 28% of the heritability of MS [15]. A number of distinct, and not necessarily exclusive, hypotheses exist as to the nature of the "missing heritability" of MS and other common diseases, including the existence of rare variants of large effect, structural genomic alterations such as copy-number variants (CNVs), or epigenetic modifications, all of which are either poorly captured by GWAS or, in the case of epigenetic changes, not captured at all [16]. It is therefore crucial that candidate MS-susceptibility loci identified by GWAS are carefully investigated to identify the biological mechanism linking genetic polymorphism at a given locus to the increased chance of developing MS.

We and others have demonstrated that signalling via the TAM (TYRO3, AXL and MERTK) family of receptor tyrosine kinases (RTKs) profoundly influences the outcome of demyelination. The TAM receptors were identified as a distinct RTK subfamily in 1991 [17], share a common domain structure [18,19], and are activated by two closely related ligands, GAS6 and PROTEIN S (PROS) [20–22]. The TAM receptors were first linked to demyelination in 2008 when we showed that loss of Gas6 leads to increased disease severity in cuprizone-induced demyelination in mice [23]. More recently, work from our group and others has shown that TAM receptor signalling is involved in both the etiology and the pathogenesis of MS. In 2011, we showed that polymorphisms within the *MERTK* gene are associated with MS susceptibility [24], a finding replicated by a large international GWAS [13], and *MERTK* remains on the current list of established MS-risk loci [15]. The MERTK and AXL receptors, as well as the soluble forms of these receptors, have also been found to be upregulated in MS lesions, and may be correlated with extended lesion activity [25]. Alterations in the circulating levels of the TAM ligands, GAS6 and PROS, have been detected in MS patients, and the level of circulating PROS has been associated with severity measures in MS [26].

These data indicate that *MERTK* is not only an important susceptibility gene for MS, but it could potentially have an ongoing role in determining disease severity. We therefore performed fine-mapping studies to refine the genetic association within this locus in order to identify biologically relevant variants within *MERTK*. We identified both rare and common variants within the *MERTK* gene independently and significantly associated with the risk of developing MS. Two of the associated variants were found to operate in *trans* with the *HLA-DRB1* locus, with one SNP showing discordant association depending upon DR15 status. In exploring the functional basis of the associations, we found that associated variants were also expression quantitative trait loci (eQTLs) for *MERTK* in human monocytes, a cell type central to MS pathology. Finally, we provide evidence that the *MERTK* MS risk-associated variants may also alter disease course in established MS.

Results

Identification of a low-frequency SNP within *MERTK* associated with MS susceptibility

We have previously identified SNPs within the *MERTK* gene that are associated with the risk of developing MS [24], and one of the SNPs we identified (rs17174780) was the lead SNP in a

large study by the IMSSC [13], confirming the association of *MERTK* with MS susceptibility. As is frequently found for GWAS-identified risk variants, all the risk-associated SNPs within the *MERTK* gene identified in the initial discovery phase were common, none were within exons, nor were they located within any obvious regulatory regions. In an attempt to identify functionally relevant variants underlying the association of *MERTK* with MS susceptibility, we conducted a follow-up fine-mapping study in which SNPs located within and adjacent to a number of known MS susceptibility genes, including *MERTK*, were genotyped to better define the most associated genetic variations leading to increased risk of developing MS [27].

Included in this follow-up study were 239 SNPs on chromosome 2, including 124 within *MERTK*, selected from dbSNP and the 1000 Genomes project. These SNPs were genotyped in 3268 MS cases and 3579 controls and analysed for association with MS. We identified a peak of association within the *MERTK* region on chromosome 2, with 36 SNPs within the *MERTK* gene showing suggestive association ($p < 0.05$), including 2 SNPs significantly associated with MS susceptibility following adjustment for multiple testing (Fig 1A, $p < 2.2 \times 10^{-4}$). The SNPs within the *MERTK* gene that were associated with MS susceptibility ($p < 0.05$), included 8 of the 10 most associated SNPs on chromosome 2 (Table 1). The SNPs within *MERTK* were contained within a region of high linkage disequilibrium (LD) that included the previously associated rs17174870 (Table 1, Fig 1B). The lead SNP within this region, rs13414207, was strongly associated with the risk of developing MS ($p = 8.5 \times 10^{-08}$), with an OR of 1.6 (Table 1). In contrast to the majority of variants previously associated with MS susceptibility [15], the risk associated allele at the lead SNP is low frequency [minor allele frequency (MAF) < 0.05]. We also identified a striking over-representation of individuals homozygous for the risk allele at rs13414207 amongst cases ($n = 14$) compared with healthy controls ($n = 3$) amongst the 3268 people with MS and 3579 controls that we assessed, suggesting an allele dosage effect, which fits with a number of potential models (Table 2).

MERTK SNPs define MS risk and protective haplotypes associated with MS susceptibility

Given the substantial LD within the region, we examined the relationship of the lead SNP to other SNPs within the *MERTK* gene that showed suggestive association with MS susceptibility. We found that 28 SNPs form a single block of very high LD ($D' > 0.99$; $\text{LOD} \geq 2$) containing 5 haplotypes with a frequency of $> 1\%$ (Fig 2). The minor allele of the lead SNP (rs13414207) tags a low frequency haplotype that is significantly associated with the risk of developing MS (Fig 2, $p = 8.53 \times 10^{-07}$). This risk haplotype also contains variants previously shown to carry MS risk in other studies, including the risk allele of rs17174870 [13,24], as well as a newly identified risk SNP (rs6710189). However, these SNPs do not appear to be independently associated with MS susceptibility outside of this haplotype (Fig 2).

In addition to the haplotype significantly associated with risk, a separate haplotype is significantly more frequent in controls compared with cases, forming an apparent protective haplotype ($p = 0.0012$). As this apparently protective haplotype is tagged by the opposite alleles of the SNPs significantly associated with risk, it may be the effect is not truly protective but represents the absence of risk.

Haplotype-based variant identification using whole-genome and resequencing strategies

The data accumulated from the fine-mapping strategy suggest that we had either identified a functionally relevant (causal) variant within the *MERTK* gene, or alternatively that we have identified a variant that is in very strong LD with a causal variant. The lack of obvious predicted

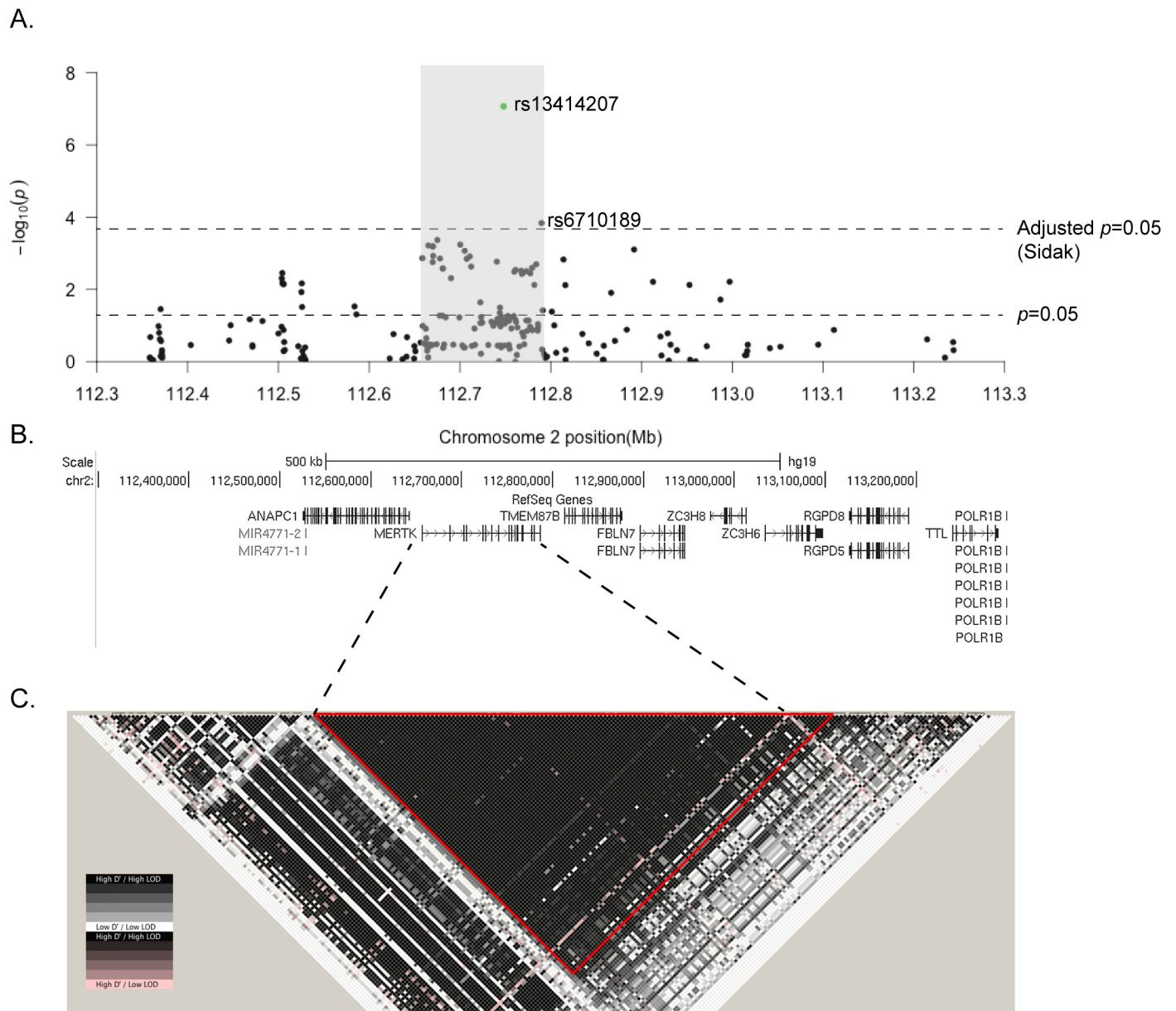


Fig 1. A low-frequency SNP within *MERTK* is significantly associated with MS susceptibility. 124 SNPs on chromosome 2 were directly genotyped in 3268 MS cases and 3579 controls. (A) The negative log of the unadjusted p -value of each SNP is plotted against the relative position on chromosome 2, with a schematic of the gene structures shown underneath (B). Two SNPs, both within *MERTK*, reach significance using the Sidak adjustment for multiple testing at a nominal $\alpha = 0.05$. Association p -values were determined using a Chi-square test. (C) Schematic of the pattern of LD across the whole region, with a large single block of high LD ($D' > 0.99$), including the whole of the *MERTK* gene, highlighted with a red triangle.

doi:10.1371/journal.pgen.1005853.g001

structural or regulatory alteration resulting from variation at rs13414207 makes the latter more probable. We used the high LD and the strong genotype effect as the basis for two complementary strategies to identify potential causal variants within the *MERTK* gene, with a particular focus on low frequency and novel variants. Specifically, we identified individuals who were homozygous for the risk-associated haplotype ($n = 17$). We designed and validated a series of overlapping amplicons ($n = 31$) and employed long-range PCR to amplify the entire *MERTK* gene plus ~ 10 kb upstream and downstream of the gene (Chr2:112,645,298–112,789,127 on

Table 1. Top 10 SNPs within *MERTK* associated with Multiple Sclerosis susceptibility.

| SNP ID | Position ^a | Minor Allele | Major Allele | MAF ^b cases | MAF controls | Odds Ratio ^c | Unadjusted <i>p</i> -value |
|------------|-----------------------|--------------|----------------|------------------------|--------------|-------------------------|----------------------------|
| rs13414207 | 112,748,053 | A | G | 0.04893 | 0.03082 | 1.618 | 8.5x10 ⁻⁰⁸ |
| rs6710189 | 112,789,792 | G | A | 0.2704 | 0.242 | 1.161 | 0.000145 |
| rs1516639 | 112,750,085 | G | C | 0.4753 | 0.4452 | 1.165 | 0.000427 |
| rs884448 | 112,700,328 | A | T | 0.4736 | 0.4442 | 1.126 | 0.000572 |
| rs17174870 | 112,665,201 | T | C ^d | 0.2219 | 0.2469 | 0.87 | 0.000607 |
| rs1400322 | 112,670,185 | G | A | 0.4758 | 0.4466 | 1.125 | 0.000637 |
| rs1400321 | 112,670,046 | A | C | 0.2241 | 0.2491 | 0.871 | 0.000649 |
| rs3761700 | 112,705,185 | C | A | 0.473 | 0.4444 | 1.122 | 0.000854 |
| rs1400323 | 112,670,461 | C | A | 0.4749 | 0.4471 | 1.118 | 0.001179 |
| rs4848901 | 112,710,828 | A | G | 0.472 | 0.4444 | 1.118 | 0.001222 |

a. SNP positions are relative to the Human February 2009 (GRC37/hg19) assembly.

b. MAF = minor allele frequency.

c. The odds ratio applies to the minor allele. d. These alleles are inferred from data obtained from sequencing the opposite strand but are presented as CT to maintain consistency with the remainder of the study.

doi:10.1371/journal.pgen.1005853.t001

GRCh37/hg19 build). Amplicons for each individual were pooled at equimolar amounts and sequenced. As it was hypothesised that this strategy would identify a large number of variants, many of which would not be associated with MS susceptibility, we also included a number of individuals homozygous for other identified haplotypes to allow for prioritisation of variants for follow-up association testing (Table 3).

As targeted sequencing strategies based on amplification and using paired-end next-generation sequencing technologies are not ideal for detection of large insertions/deletions (in-dels) and other large structural variants, we also undertook whole-genome sequencing (WGS) of a single individual homozygous for the risk haplotype.

Both strategies produced high quality data, with a sequencing depth of 35-40x (WGS) and 50x for >96% bases and 100x for >90% bases (targeted strategy), and the vast majority of variants (>99%) were identified in both methods. The WGS strategy was successful in identifying two variants that failed to map using the targeted method. The first of these variants was a long repeat expansion within intron 1 (chr2:112,682,854; build hg19) from the reference TA₈T₂₁ to TA₂₁T_{>26<200}. The second was a retrotransposon insertion polymorphism (RIP) involving an insertion of an AluYf4 retrotransposon in intron 4 (chr2:112,716,560; hg19). Overall we identified 580 variants (SNPs, in-dels and larger variants) within or nearby the *MERTK* gene in individuals homozygous for the risk haplotype (Table 4). As our resequencing strategy was focused upon the risk haplotype, it is not surprising that a comparison of the variation pattern compared with reference sequence showed a significant number of variants within this group (Fig 3). In contrast, the haplotype 3 group, despite sharing many alleles with haplotype 5 in our

Table 2. Gene model association of rs13414207 with Multiple Sclerosis.

| Test | Minor Allele | Major Allele | Affected | Not affected | <i>p</i> -value |
|-----------|--------------|--------------|-------------|--------------|------------------------|
| Genotype | A | G | 14/284/2890 | 3/207/3246 | 4.84x10 ⁻⁰⁷ |
| Trend | A | G | 312/6064 | 213/6699 | 1.24x10 ⁻⁰⁷ |
| Allelic | A | G | 312/6064 | 213/6699 | 8.50x10 ⁻⁰⁸ |
| Dominant | A | G | 298/2890 | 210/3246 | 5.36x10 ⁻⁰⁷ |
| Recessive | A | G | 14/3174 | 3/3453 | 0.0045 |

doi:10.1371/journal.pgen.1005853.t002

| Haplotype Number | rs17174870 | rs13414207 | rs6710189 | Frequency Cases | Frequency Controls | p-value | |
|------------------|-------------------------------|------------|-----------|-----------------|--------------------|---------|-----------------------|
| 1. | ACACAACCGCATAAGGAGCGAAGAGAAA | | | .298 | .300 | .303 | 0.6773 |
| 2. | GTGAAACAAAATAGGAGGGGAGTAGACGA | | | .227 | .217 | .241 | 0.0012 |
| 3. | ACACGCGCGCGACAAGAGCGAAGAGAAAG | | | .213 | .221 | .209 | 0.0963 |
| 4. | ACACGCGCGCGACAAGAGCGAAGAGAAA | | | .199 | .201 | .201 | 0.9551 |
| 5. | ACACGCGCGCGACAAGAACGAAGAGAAAG | ▲ | | .038 | .047 | .031 | 8.53x10 ⁻⁷ |

Fig 2. SNPs within MERTK define both risk and protective haplotypes associated with MS susceptibility. 28 SNPs within the MERTK gene form a single block of very high LD ($D' > 0.99$, $LOD \geq 2$). The five most frequent haplotypes (population frequency >1%) are shown in this schematic, along with the p-value of association of each haplotype with MS susceptibility as determined using a Chi-square test. Arrowhead indicates the haplotype-tagging allele of rs13414207 in haplotype 5. The alleles presented for rs17174870 are inferred from data obtained from sequencing the opposite strand but are presented as CT to maintain consistency with the remainder of the study.

doi:10.1371/journal.pgen.1005853.g002

initial analysis of 28 SNPs (Fig 2) does not overall share many variants with the risk haplotype in the expanded resequencing analysis (Fig 3). Conversely, the haplotype 2 group also contains many non-reference alleles, many of which are shared with the risk haplotype (Fig 3).

We then used a number of methods to prioritise variants for downstream functional analysis and association testing. As we were, *a priori*, attempting to identify polymorphisms in MERTK that showed population level association with MS susceptibility, all private mutations were excluded from further analysis. Secondly, any SNPs previously tested in other large data sets, including our fine-mapping data set, and found not to be associated with MS susceptibility, were excluded. We then used our control groups, particularly the haplotype 2 group, to exclude a further set of variants that showed a high degree of sharing between the risk and non-risk haplotypes. At the conclusion of this prioritisation strategy, we developed a final list of 74 variants for further analysis and association testing.

Low frequency and common variants within MERTK are independently associated with MS susceptibility

Following the prioritisation of variants for association testing, we then designed genotyping strategies. A number of SNPs failed at the design or QC stage and were unable to be tested for association. Failed variants included the two novel variants identified via WGS. The T_nT_n proved to be highly variable in length, with longer expansions correlating with the risk haplotype and the presence of the lead SNP (S2 Table), however the repetitive nature of the

Table 3. Individuals used for resequencing of MERTK.

| Haplotype | rs13414207 genotype | Cases | Healthy controls |
|-----------|---------------------|-------|------------------|
| 2 | GG | 0 | 10 |
| 3 | GG | 20 | 12 |
| 4 | GG | 0 | 6 |
| 5 | AA | 14 | 3 |

doi:10.1371/journal.pgen.1005853.t003

Table 4. Summary of variants identified in *MERTK*.

| Variant Type | Method of Identification | All | Intronic/ Exonic | Novel (exonic) | Private mutations |
|-----------------------|---|-----|------------------|----------------|-------------------|
| SNP | WGS ^b /Targeted NGS ^c | 337 | 332/5 | 88 (0) | 44 |
| In-Dels ^a | WGS/Targeted NGS | 241 | 241/0 | 201 (0) | 29 |
| Long Repeat expansion | WGS | 1 | 1/0 | 1(0) | 0 |
| Large In-Del | WGS | 1 | 1/0 | 1(0) | 0 |
| TOTAL | | 580 | 575/5 | 291 (0) | 73 |

- a. In-del = Insertion-Deletion.
- b. WGS = Whole Genome Sequencing.
- c. NGS = Next-Generation Sequencing

doi:10.1371/journal.pgen.1005853.t004

expansion was refractory to both sequencing and cloning. Although we showed that the RIP AluYf4 insertion was in perfect LD with the lead SNP (S3 Table), the design of our association testing for newly identified variants (see below) did not allow independent association testing of this variant. At the conclusion of the design process a total of 52 variants (SNPs and in-dels) were taken to association testing.

A total of 1500 cases and an equivalent number of controls were randomly selected from the original fine-mapping data set, excluding the samples used for identification of variants, plus a small number of newly acquired samples. A completely independent sample was not available for association testing, as the original dataset comprised a substantial portion of all available MS cases in Australia and New Zealand. Given these limitations, and the need to specifically exclude all known homozygotes for our original lead SNP (and thus the AluYf4 RIP) it was not possible to independently confirm association of this lead SNP with MS susceptibility, although both rs13414207 and rs17174870 were included in the testing for examination of haplotype structure.

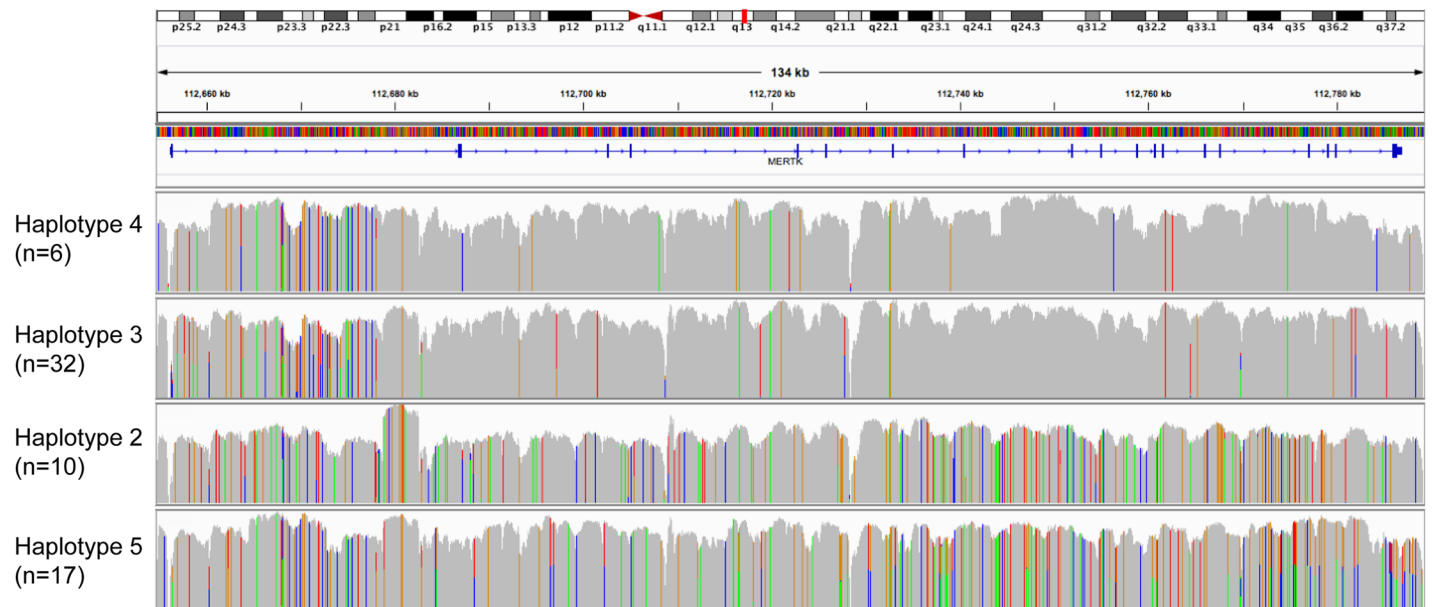


Fig 3. Heat map of variants found in *MERTK* grouped according to haplotype. The sequence of each group following resequencing was compared with the reference genome (GRCh37/hg19). Coloured lines indicate a base that is variant compared with the reference genome. Mapping of the groups shows that haplotype groups 3 and 4 were most closely related to the reference sequence, showing many invariant nucleotides. Conversely haplotype groups 2 and 5 showed the greatest differences to the reference sequence and an apparently close relationship, sharing many variants.

doi:10.1371/journal.pgen.1005853.g003

Table 5. Results of the association testing for variants identified in *MERTK*.

| SNP ID | Position ¹ | Minor Allele | Major Allele | MAF | Affected | Unaffected | Chi-square | p-value |
|------------|-----------------------|--------------|--------------|-------|-------------|-------------|------------|---------|
| rs56361454 | 112774105 | T | C | 0.34 | 171/704/615 | 173/638/683 | 7.96 | 0.01868 |
| rs13419523 | 112781917 | C | T | 0.083 | 16/214/1261 | 7/239/1254 | 7.041 | 0.02959 |
| rs7422195 | 112775064 | A | G | 0.374 | 199/717/531 | 200/661/602 | 6.974 | 0.03059 |
| rs6755828 | 112787215 | C | G | 0.083 | 16/216/1257 | 7/236/1250 | 6.635 | 0.03625 |
| rs72825667 | 112779732 | T | G | 0.052 | 25/114/1353 | 11/124/1361 | 6.554 | 0.03775 |
| rs10198880 | 112787805 | T | A | 0.083 | 15/215/1259 | 7/237/1254 | 5.995 | 0.0499 |

doi:10.1371/journal.pgen.1005853.t005

Given that our variant identification strategy was particularly focused on low frequency and novel variants, we first tested association under the genotypic model (2 d.f.). Under this model we observed a number of SNPs, both low frequency and common variants, which showed significant association with MS susceptibility (Table 5). The low frequency SNPs that show association are either contained within the same haplotype block or are connected across blocks (Fig 4), and all have a clear excess of minor allele homozygotes in the affected group (Table 5), suggestive of a recessive effect. Testing these SNPs under a recessive model showed a significant association of rs72825667 with MS susceptibility ($p = 0.019$, OR = 2.3) and this SNP also tags a significantly associated haplotype (Fig 4, $p = 0.046$).

Given that *MERTK* is expressed on a number of immune cells which also express MHC II molecules, and which have a well characterised association with MS susceptibility, we wished to determine if any of the *MERTK* variants identified through resequencing showed an interaction with *DR15*, the predominant risk allele within the HLA locus. We therefore tested all 52 SNPs for interaction with *DR15* and in addition to the low frequency variants associated with MS risk, we observed an apparently independent effect of other common SNPs that also showed a statistically significant interaction with *DR15* (Table 6). We therefore separately assessed the association of these SNPs in the *DR15* negative and *DR15* homozygote population and found that whilst these SNPs were both associated in the *DR15* negative population one of these SNPs, rs7422195, was associated in both populations, but the association was discordant, with the opposite allele associated with risk in the *DR15* negative versus *DR15* positive group [Table 6, *DR15* negative $p = 0.0383$ (A-allele); *DR15* homozygous $p = 0.0387$ (G-allele)]. This SNP also tags a significantly associated haplotype (Fig 4, $p = 0.049$), but importantly tags a different haplotype to that tagged by rs72825667, suggesting an independent effect. When we examined the disease frequency in populations stratified by genotype at rs7422195, it is clear that the minor allele is associated with risk in the *DR15* negative population, but in the smaller *DR15* homozygote population, where the baseline disease rate is quite high, two copies of the minor allele has a clear protective effect (Fig 5).

MS susceptibility variants in *MERTK* are associated with altered expression in human monocytes

The data above clearly link polymorphisms within the *MERTK* gene to MS susceptibility, but due to the multiple independent association signals and high LD within the region, resequencing has not allowed clear determination of a direct disease causing variant. As a complementary approach to dissecting the association of *MERTK* with MS susceptibility, we used an expression quantitative trait loci (eQTL) mapping study to determine the effect of genetic variants upon *MERTK* gene expression in immune cells. We collected peripheral blood mononuclear cells from participants and purified CD14⁺ monocytes, CD19⁺ B cells, CD4⁺ T cells, CD8⁺ T cells and CD56⁺CD3⁻ Natural Killer cells and used ImmunoChip, which includes

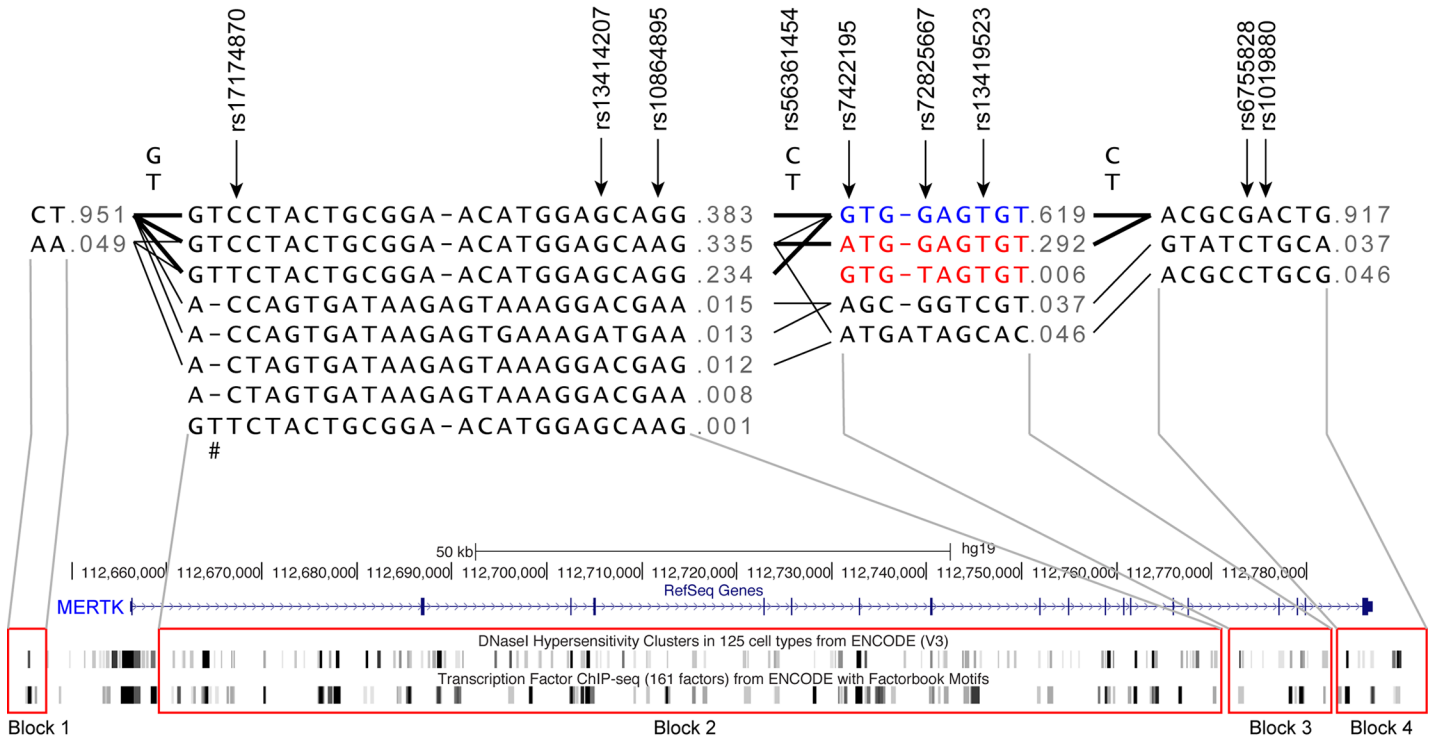


Fig 4. The haplotype structure of variants identified in *MERTK*. The 52 variants in *MERTK* genotyped for association with MS susceptibility fall into 4 separate blocks. Haplotype blocks are connected with thick lines if connections are observed in >10% samples and thin lines if connections are observed in >1% samples. A schematic of the *MERTK* gene is shown underneath indicating the relationship of the blocks to the physical structure of *MERTK*. The haplotypes coloured in red are significantly associated with MS susceptibility ($p < 0.05$) and the haplotypes coloured in blue is associated with protection ($p < 0.05$). The p -value of association was determined using a Chi-square test. #This variant represents a tri-nucleotide in-del (T/- = TGG; -)

doi:10.1371/journal.pgen.1005853.g004

the *MERTK* risk-associated SNP rs17174870, to stratify expression based upon *MERTK* genotype. We found that in purified monocytes, but not in the other immune cell types we studied, expression of the *MERTK* gene is strongly correlated with genotype (Table 7, $p = 2.2 \times 10^{-5}$, FDR $p_{adj} = 0.006$). In CD4⁺ve T-cells there is suggestive association of genotype with *MERTK*

Table 6. Association of *MERTK* SNPs in populations stratified by DR15 status.

| SNP ID | Position ¹ | DR15 Interaction p -value | Population | MAF cases | MAF controls | p -value | Odds Ratio |
|------------|-----------------------|-----------------------------|-------------------|-----------|--------------|-----------------------------|------------|
| rs7422195 | 112775064 | 0.0296 | All subjects | 0.3853 | 0.3626 | 0.06516 | |
| | | | DR15 negative | 0.3935 | 0.3563 | 0.0383 (CHISQ) | 1.172 |
| | | | | | | 0.00522 (Interaction Model) | 1.228 |
| | | | DR15 heterozygous | 0.3862 | 0.3698 | 0.4539 (CHISQ) | 1.072 |
| | | | | | | 0.8547 (Interaction Model) | 1.015 |
| rs10864895 | 112764394 | 0.0286 | DR15 homozygous | 0.3387 | 0.4722 | 0.03872 (CHISQ) | 0.5725 |
| | | | | | | 0.1594 (Interaction Model) | 0.7906 |
| | | | All subjects | 0.3922 | 0.3743 | 0.1841 | |
| | | | DR15 negative | 0.4 | 0.3665 | 0.05 (CHISQ) | 1.152 |
| | | | | | | 0.01631 (Interaction Model) | 1.187 |
| | | | DR15 heterozygous | 0.3956 | 0.3919 | 0.8649 (CHISQ) | 1.016 |
| | | | | | | 0.5595 (Interaction Model) | 1.047 |
| | | | DR15 homozygous | 0.3373 | 0.4583 | 0.05981 (CHISQ) | 0.6015 |
| | | | | | | 0.1082 (Interaction Model) | 0.7688 |

doi:10.1371/journal.pgen.1005853.t006

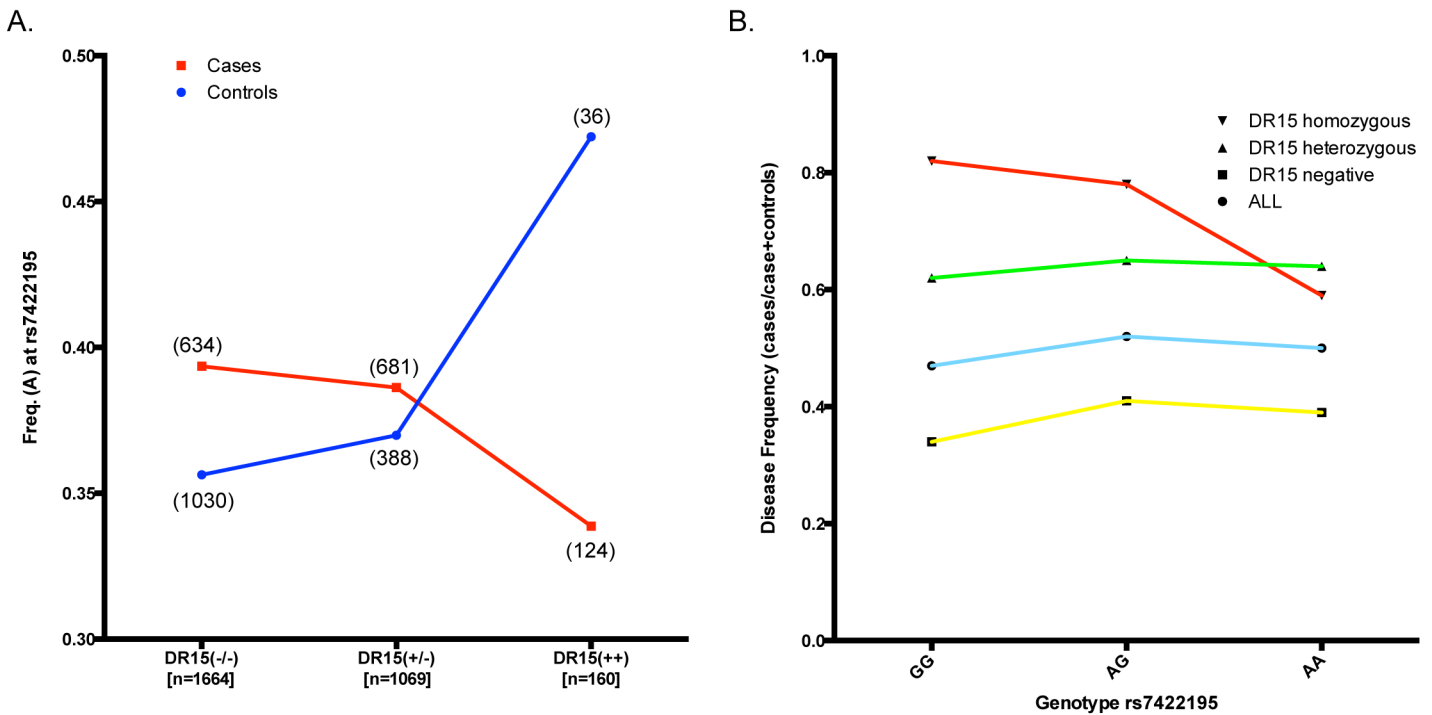


Fig 5. Discordant effect of rs7422195 in the presence or absence of HLA-DRB1*15:01. All samples (n = 3000) were first stratified according to the number of DR15 alleles then by genotype at rs7422195. (A) The frequency of the A-allele of rs7422195 was calculated for cases and controls within each DR15 genotype group, showing a clear decrease in the frequency of the A-allele with increasing copies of DR15 within MS cases, and the opposite effect in healthy controls. The total number of samples within each DR15 genotype group is included below the group name on the x-axis, with the number of individuals used to calculate each point represented in brackets on the graph. (B) Disease frequency for each group was calculated as the number of MS cases divided by the total number of cases and healthy controls for each genotype. The minor allele at rs7422195 shows an increase in the disease risk in the absence of DR15, but a clear decrease in the disease frequency amongst individuals carrying two copies of DR15.

doi:10.1371/journal.pgen.1005853.g005

expression (Table 7, $p = 7.6 \times 10^{-4}$, $p_{adj} = 0.091$), although as no enrichment for T cells was performed beyond selection for CD4 positivity, the signal in this group could potentially be from CD4⁺ve monocytes. In contrast, expression was not correlated with phenotype in this population in any cell type (Table 7, $p > 0.05$). The risk genotype was associated with higher expression in monocytes, with a clear allele dosage effect (Fig 6A).

In order to better define potential functional variants within the MERTK gene we then combined our expression data with genotype information obtained from our resequencing strategy. Given that each haplotype block contained multiple potential regulatory regions (Fig 4) we first stratified our samples by haplotype blocks to determine which region was most associated with altered MERTK expression. We then compared expression in individuals homozygous for the most frequent haplotypes in blocks 2 (from intron 1 to intron 15) and 3 (from intron 15 to

Table 7. rs17174870 genotype dependent expression of MERTK in immune cell subtypes.

| Cell type | Number of samples | Unadjusted p-value | FDR q-value | Genotype-Phenotype Interaction p-value |
|-----------------------------|-----------------------|------------------------|-------------|--|
| Monocytes | 67 cases; 98 controls | 2.215×10^{-5} | 0.006 | 0.4551 |
| B cells | 38 cases; 89 controls | 0.8052 | 0.99 | 0.4756 |
| CD4 ⁺ ve T cells | 43 cases; 88 controls | 7.614×10^{-4} | 0.091 | 0.9277 |
| CD8 ⁺ ve T cells | 56 cases; 74 controls | 0.06279 | 0.69 | 0.5467 |
| Natural Killer cells | 56 cases; 93 controls | 0.0385 | 0.69 | 0.7777 |

doi:10.1371/journal.pgen.1005853.t007

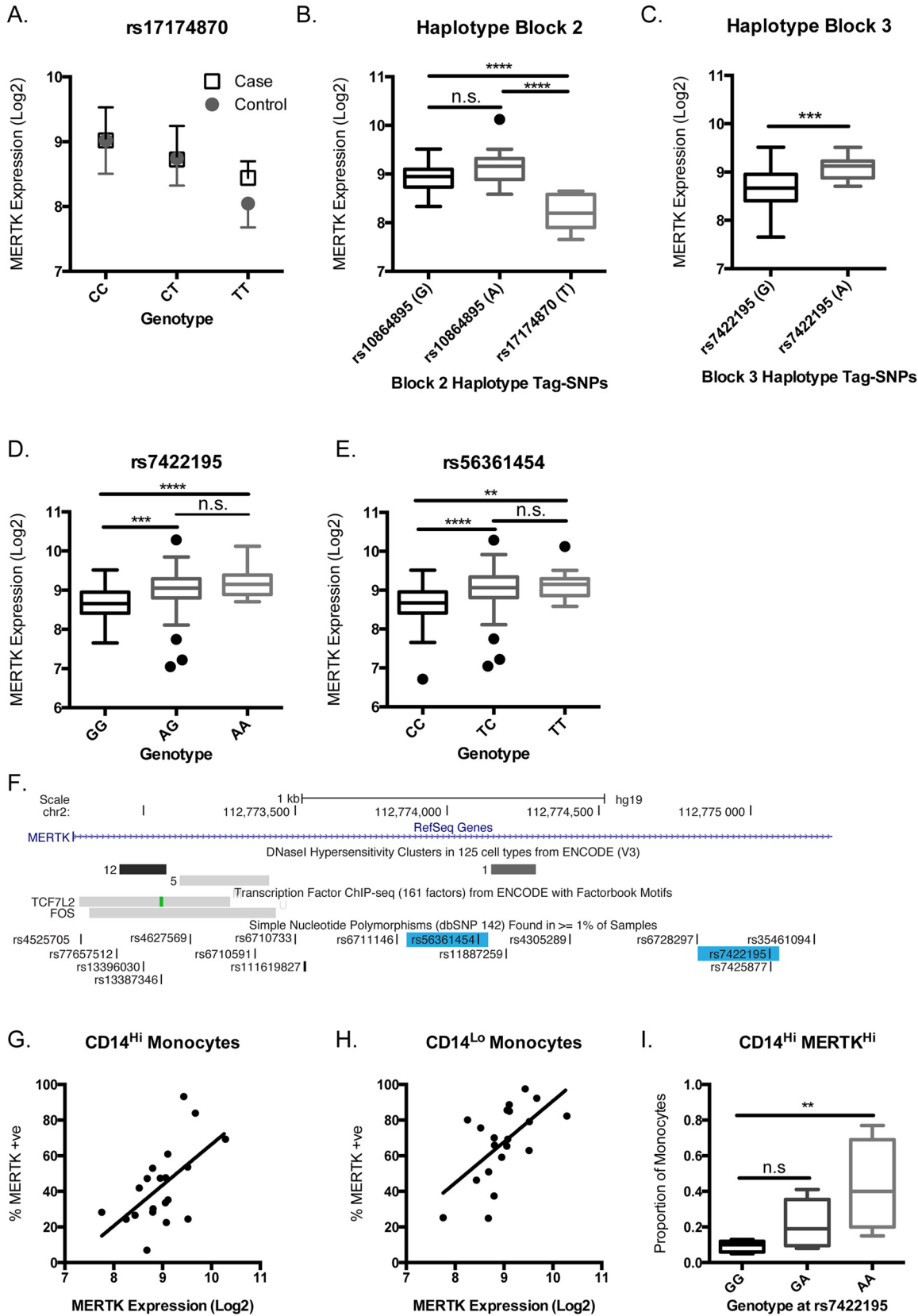


Fig 6. Expression of MERTK in monocytes is genotype dependent. Immune cell subsets were purified from peripheral blood mononuclear cells obtained from MS cases and healthy controls using magnetic cell sorting. (A) Gene expression was measured using the Affymetrix Human ST1.0 array. The genotype for each participant was determined using Immunochip (Illumina) and expression data stratified by genotype at rs17174870. Expression of the *MERTK* gene in monocytes was significantly associated with genotype ($p = 2.215 \times 10^{-5}$, $p_{adj} = 0.006$) but not with phenotype ($p > 0.05$). We then stratified individuals carrying various combinations of the haplotype blocks identified in association testing and stratified expression for individuals homozygous for those in block 2 (B) and block 3 (C), with the tag-SNP and relevant allele shown for each haplotype. (B) Individuals homozygous for the haplotype tagged by rs17174870(T) showed significantly lower *MERTK* expression compared with haplotypes A or B ($p < 0.0001$). (C) Individuals homozygous for the haplotype tagged by rs7422195(A) showed significantly increased expression of *MERTK* compared with the haplotype tagged by the alternative (G) allele. (D) When samples are stratified by rs7422195 expression of *MERTK* is increased with increased copies of the minor (A) allele [Mean expression \pm SD: 8.654 \pm 0.369 (GG), 9.012 \pm 0.5514 (AG) $p < 0.001$ vs GG, 9.186 \pm 0.3434 (AA) $p < 0.0001$ vs GG] (E) When samples are stratified by rs56361454 expression of *MERTK* is increased with increased copies of the minor (T) allele [Mean expression \pm SD: 8.655 \pm 0.4489 (CC), 9.041 \pm 0.5529 (CT) $p < 0.0001$ vs CC, 9.139 \pm 0.3603 (TT) $p < 0.01$ vs CC]. (F) Schematic of the genomic region surrounding rs7422195 and rs56361454 showing transcription factor binding sites and DNase sensitive regions. *MERTK* expression on the surface of monocytes was determined using flow cytometric analysis of whole blood and correlated with *MERTK* gene expression. *MERTK* surface expression was significantly correlated with gene expression in (G) CD14^{Hi} ($r^2 = 0.3434$, $p = 0.0066$) and (H) CD14^{Lo} ($r^2 = 0.3624$, $p = 0.005$) monocytes. (I) The proportion of CD14^{Hi}*MERTK*^{Hi} monocytes is increased with increasing dose of the minor (A) allele of rs7422195 ($p < 0.01$ GG vs AA). All grouped expression data are plotted as Tukey box and whiskers.

doi:10.1371/journal.pgen.1005853.g006

intron 18) (Fig 4). We were unable to compare other blocks or less frequent haplotypes due to insufficient sample numbers. The tag-SNPs within each block, irrespective of their marginal association with MS-risk, were identified and used to stratify haplotypes. When stratified by block 2, we observed significantly lower expression associated with the haplotype tagged by the minor allele (T) at rs17174870 (Fig 6B, $p < 0.0001$), but no differences in expression between the two haplotypes tagged by the alleles at rs1084895 (Fig 6B, $p > 0.05$). This data suggests firstly that rs1084895 is not likely to be the causal factor for expression differences; and secondly, that the non-risk associated allele at rs17174870 is associated with lower expression, either as a tag-SNP or potentially as the biologically relevant variant.

Conversely, in block 3 (Fig 4), the major haplotype tagged by the minor allele at rs7422195 is associated with significantly higher expression of the *MERTK* gene (Fig 6C, $p < 0.001$), implicating this SNP as the functionally relevant variant associated with increased expression of *MERTK*. When all samples were stratified by genotype at rs7422195, we observed the minor allele (A) was significantly associated with increased *MERTK* gene expression (Fig 6D, $p < 0.0001$). However, rs7422195 is in very strong LD ($r^2 = 0.99$) with rs56361454, a SNP not contained within any block, and when samples are stratified by this SNP, the minor allele (T) is similarly associated with significantly increased expression of *MERTK* (Fig 6E). These data therefore strongly implicate either rs7422195 or rs56361454 as the functionally relevant variant altering *MERTK* expression within monocytes. An examination of the genomic region containing these variants shows that both are within the same 2kb region that contains known transcription factor binding sites for TCF7L2 and FOS, as well as other genomic features associated with transcriptional activity such as DNase hypersensitivity sites, (Fig 6F). However, we cannot formally exclude that rs7422195 may be acting as a tag-SNP for another variant directly affecting *MERTK* transcription, including the TA_nT_n novel repeat expansion identified in this study and for which we could not design a genotyping assay, as the A-allele at rs7422195 appeared to be associated with the presence of larger expansions (S1 Fig).

The data above clearly show that variants within *MERTK* are significantly associated with changes in *MERTK* gene expression. We used flow cytometric analysis to explore whether changes in transcription of the *MERTK* gene were reflected in alterations in the expression of the *MERTK* receptor on the surface of monocytes. We found that the expression of *MERTK* gene was significantly correlated with the percentage of *MERTK*-positive cells in both the classical (CD14^{Hi}) monocyte population (Fig 6G, $r^2 = 0.34$, $p = 0.0066$), and the non-classical (CD14^{Lo}) monocyte population (Fig 6H, $r^2 = 0.36$, $p = 0.005$). When we stratified the classical (CD14^{Hi}) monocyte population by genotype at rs7422195 and determined the proportion of monocytes that were *MERTK*^{Hi}, we found that the minor allele was significantly associated

with a 4.5 fold increase in the proportion of CD14^{Hi}MERTK^{Hi} monocytes (Fig 6L, $p < 0.001$), consistent with the increased transcription of *MERTK* associated with this allele.

The *MERTK* gene contains a novel alternative final exon, but exon usage is not altered by MS susceptibility variants in *MERTK*

As the initially identified low frequency risk associated SNP (rs13414207) was in perfect LD with an AluYf4 insertion, and such insertions have been shown in other diseases to be associated with exon-skipping [28,29], we wished to test whether risk-associated SNPs within *MERTK* were associated with differential exon usage in monocytes. We therefore purified monocytes from MS cases ($n = 5$) all of whom were homozygous for rs13414207(A), and which were also homozygous for the AluYf4 RIP. In addition, due to haplotype structure in the region, all patients were also homozygous for the rs7422195(A) allele associated with increased *MERTK* gene expression but homozygous for the low expression associated C-allele at rs56361454. We also purified monocytes from healthy controls ($n = 3$) all of whom were homozygous for the opposite alleles for the aforementioned SNPs [ie. rs13414207(G)-rs7422195(G)-rs56361454(T)] and who were negative for the AluYf4 RIP. We then extracted mRNA from the purified monocytes and performed RNA sequencing (RNAseq). Whole transcriptome analysis for differential gene expression revealed that *MERTK* transcripts were increased 3.63 fold ($p = 3.7 \times 10^{-5}$, FDR $p_{adj} = 0.03$) in the group homozygous for the rs7422195 allele previously associated with high expression, confirming the association of this allele with increased *MERTK* expression. Conversely, as this group were all homozygous for the (T) allele at rs56361454, which we were previously unable to separate from rs7422195 due to high LD, this data suggests that the minor (A) allele at rs7422195 is the biologically relevant variant linked with *MERTK* gene expression.

In addition to assessing overall expression effects, we also analysed the transcriptome for altered RNA splicing. We observed no differences in the location of splice junctions in *MERTK* in either the high or low *MERTK* expressing group and the majority of junctions aligned with canonical 19 exons within the *MERTK* gene (Fig 7A). The only exception to this was that all samples contained a junction from the 3' end of exon 18 to a small putative alternative final exon that excluded the canonical final exon 19 (Fig 7A). Alignment of the transcript reads showed the putative final exon to be approximately 1273bp at position 112,796,928–112,798,200 (genome build GRCh37/hg19). We confirmed the inclusion of this alternative exon in some *MERTK* transcripts using reverse transcription PCR (Fig 7B). The inclusion of this exon, and the exclusion of the canonical final exon, would lead to an early stop signal within the tyrosine kinase domain of MERTK and potentially the production of a membrane-bound non-signalling MERTK receptor. However, the inclusion or exclusion of the alternative final exon does not appear to be altered by polymorphisms within the *MERTK* gene, as we observed no significant differences in exon usage between the two groups. Although overall expression of each exon was higher in the high expressing group (Fig 7C), once expression was normalised to account for the 3.63 fold overall expression increase in this group, the pattern of exon usage was the same in the two groups, independent of genotype (Fig 7D).

MERTK risk variants may alter disease course in established MS

We have previously shown that differential expression of the TAM ligand PROS is associated with altered severity in established MS [26]. We therefore wished to investigate whether the genotype dependent expression changes have an ongoing role in modulating severity in established MS. The onset of progression following a relapsing course of MS is one of the key determinants of clinical outcome [30]. We assessed a subset of our samples ($n = 874$), all recruited

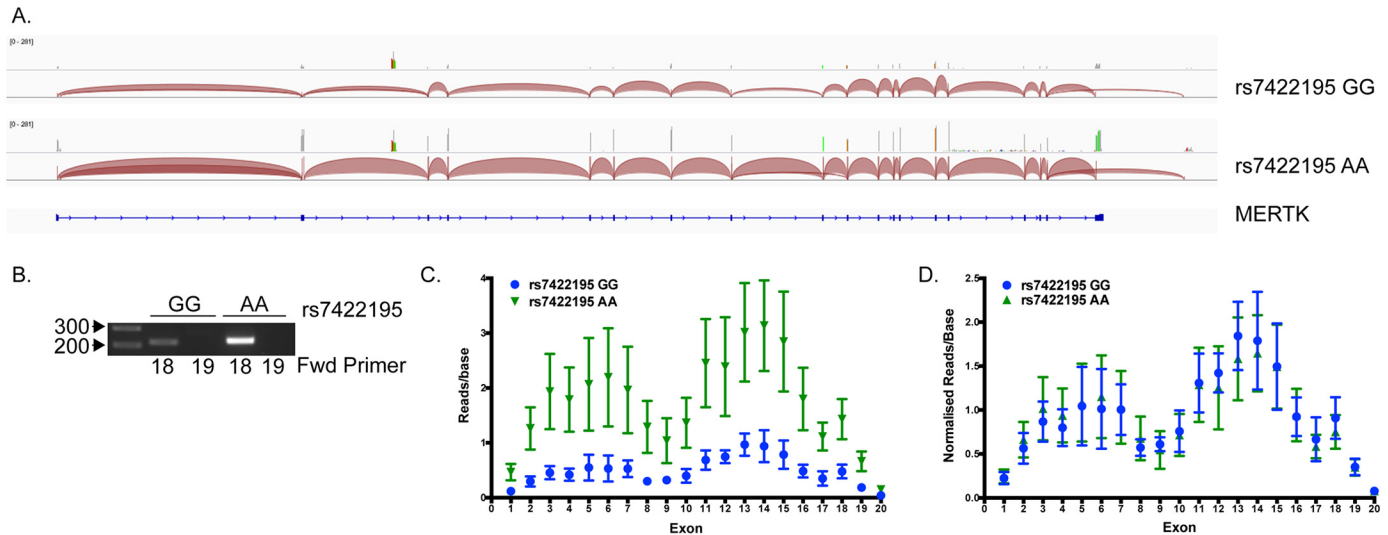


Fig 7. The *MERTK* gene contains a novel alternative final exon but usage is not genotype-dependent. (A) Exon junctions in RNA sequencing data were visualised using IGV_2.3.35. Representative junction maps for a low (rs7422195 GG) and high (rs7422195 AA) expressing sample are shown. Each shows the presence of a junction from exon 18 to a putative novel alternative final exon excluding exon 19. (B) RT-PCR analysis of a high and low expressing sample show the presence of this exon only in combination with exon 18 and not exon 19. (C) Exon usage analysis shows overall increased expression of each exon in samples homozygous for the rs7422195 minor (A) allele, but no difference in exon usage following normalisation for overall expression level (D).

doi:10.1371/journal.pgen.1005853.g007

in the same centre (Victorian MS cohort), for the cumulative probability of MS progression over time. We stratified our data by genotype at rs7422195 and divided the cohort into *DR15* negative and *DR15* homozygous groups. We found that in both groups, there was a strong trend towards altered probability of progression dependent upon genotype at rs7422195 (Fig 8) but that, consistent with the association data, the opposite allele was associated with altered

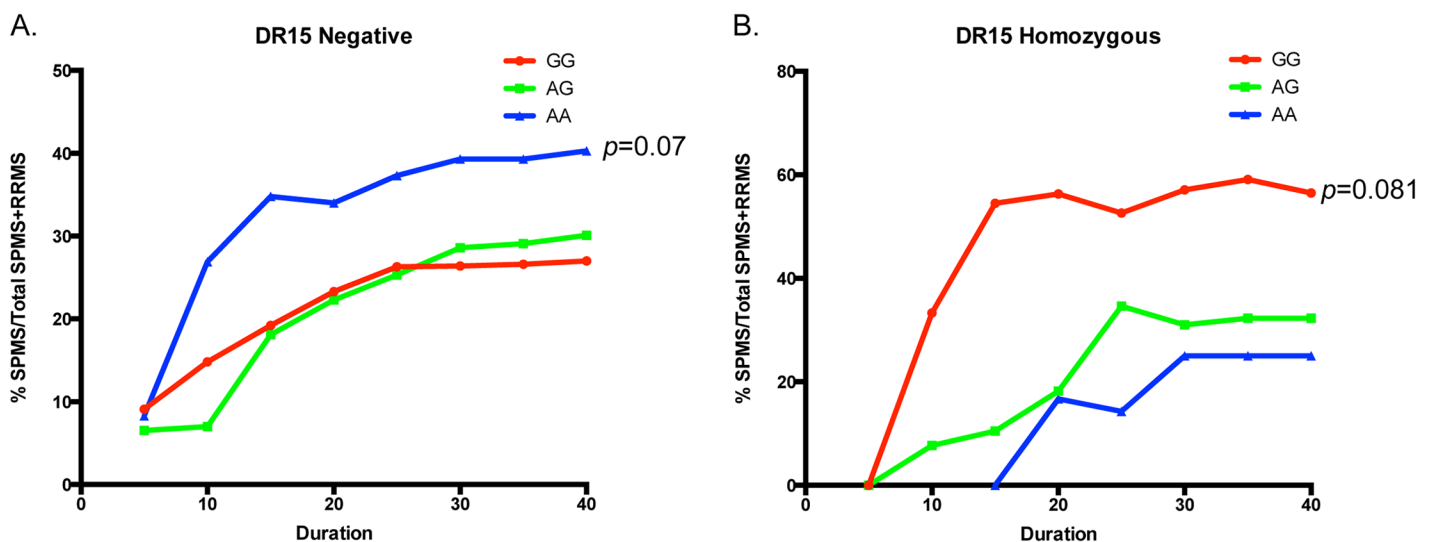


Fig 8. Disease course is altered in the presence of *MERTK* susceptibility-associated variants. Individuals initially presenting with a relapsing-remitting course of MS were stratified by both *DR15* status and genotype at rs7422195. (A) In the presence of the minor (A) allele of rs7422195, *DR15* negative individuals (n = 370) showed a strong trend towards increased probability of progression (p = 0.07) (B) In the presence of the major (G) allele of rs7422195 *DR15* homozygous individuals (n = 68) showed a strong trend towards increased probability of progression (p = 0.081)

doi:10.1371/journal.pgen.1005853.g008

progression, such that in the *DR15* negative group, patients homozygous for the risk-associated (A) allele have an increased probability of progression, although the effect does not reach statistical significance (Fig 8A, $p = 0.07$, OR = 1.9, 95% CI 0.948 to 3.87). Conversely, in the *DR15* homozygous group, where the (G) allele is associated with risk, patients homozygous for this allele have an increased probability of progression (Fig 8B, $p = 0.08$, OR = 5.6, 95% CI 0.811 to 38.2).

Discussion

In this study we have refined the association of *MERTK* with MS susceptibility to independent signals from both common and low frequency variants. We have shown that one of the associated variants, which is an eQTL for *MERTK* expression, is in *trans* with the *HLA-DRB1* locus, and shows discordant association dependent upon *DR15* status. In addition, we have identified a number of low-frequency variants, all contained within the same haplotype, which are associated with MS susceptibility and operate in a recessive manner. Finally, we have shown that polymorphisms within *MERTK* affect not only MS susceptibility, but may also affect severity in established MS.

The main focus of this study was to refine the association of *MERTK* with MS susceptibility and to identify potential causal variants. In the process of this refinement, we identified both common and low frequency variants within *MERTK* independently associated with the risk of developing MS. The variants identified in this study are all in LD with the common variant within *MERTK*, rs17174870, previously identified by us, and replicated by the IMSCG, as associated with MS susceptibility [13,24]. The majority of variants captured in GWAS studies are common (MAF >0.05), and those found to be associated with disease are often intronic and outside any obvious regulatory regions, leading to the speculation that the signals detected in GWAS are in fact the result of synthetic associations between rare variants and common variants [31]. However, a recent study has cast doubt upon this hypothesis, and found limited support for the influence of rare coding sequence variants upon disease susceptibility in a combined analysis of six common autoimmune diseases, including MS [32]. In contrast, it has recently been shown that a rare null mutation in the P2X7 receptor is strongly associated with protection against MS [33]. This study of *MERTK* suggests that, at least in some cases, associations from low frequency variants may underlie the signal observed in GWAS analysis of common variants, and that careful selection of individuals for resequencing is crucial for the detection of the true underlying signal, as has previously been suggested [34].

The lead SNP in our fine-mapping studies, rs13414207, was a low-frequency variant located between exons 7 and 8 within the *MERTK* gene, and was not within any clear regulatory region such as a transcription factor binding site. Resequencing of the *MERTK* gene has successfully identified a number of variants, all in LD with the lead SNP and showing a similar recessive mode of effect. However, we were unable from this study to determine which of the variants identified from the resequencing strategy was the biologically relevant variant. The failure to do so was partially due to the strong LD within the region, and partially due to technical limitations in our ability to genotype individuals for many of the novel SNPs and larger variations such as the AluYf4 RIP and the TA_nT_n expansion. However, although we did not identify a clear causal variant in this region, homozygosity for the risk-associated haplotype containing these low frequency variants shows a substantial increase in the risk of developing MS, with double the risk of MS amongst homozygous individuals. This increased risk appears to be independent of the expression of *MERTK*, with these recessive-effect SNPs found on haplotypes linked with both low and high *MERTK* expression. Further work will be required to determine the biological effect of these variants and whether they act independently or if MS risk is

associated with overall burden of these low frequency alleles. The two larger variants in particular warrant further investigation, as these types of variants have been linked with other human diseases. For example, a pathogenic retrotransposon insertion in the 3'UTR of the Fukutin gene leads to the development of Fukuyama-type congenital muscular dystrophy [29], whereas an AT_n dinucleotide repeat polymorphism within the *CTLA-4* gene has been shown to be protective against development of Graves' Disease in childhood [35].

In addition to the recessive low frequency variants, we also identified other more common variants associated with MS susceptibility, one of which showed discordant association depending upon the *DR15* status of the individual. Discordant associations have been previously reported across different autoimmune diseases (reviewed in [36]), but to our knowledge this is the first such association described within a single disease. In this case, the minor allele at rs7422195 is associated with MS susceptibility in the absence of *DR15*, but this is converted to a protective effect on a *DR15* homozygous background.

What might mediate this discordant effect of rs7422195? We have shown that in monocytes, but not other immune cell types, this SNP is associated with altered expression of MERTK, at both the gene and protein level, and that the minor allele of rs7422195 is associated with increased expression of MERTK. Monocytes are the precursors of a number of cell types, including macrophages and dendritic cells, that have been shown to be central to the etiology of MS (reviewed in [37,38]). We further found that there was suggestive genotype dependent expression of *MERTK* in CD4^{+ve} cells, the majority of which are T cells. Although this association would need to be validated in order to exclude the possibility that the detected altered expression was not the result of contaminating CD4^{+ve} monocytes, it has recently been shown that *Mertk* is expressed in the Th17^{+ve} subset of CD4^{+ve} T cells in mice following induction of experimental autoimmune encephalomyelitis, a mouse model of MS [39].

MERTK is an important regulator of immune activation, and the expression of MERTK is essential to the maintenance of immune homeostasis—maintaining the balance of immune activation when required and immune suppression following challenge. In animal models it has been shown that the relationship of MERTK to autoimmune disease is complex, and in some cases dependent upon genetic background. For example in the NOD (non-obese diabetic) mouse model of spontaneous diabetes, knockdown of *MERTK* results in resistance to the development of diabetes, and this effect appears to be mediated by bone-marrow derived dendritic cells [40]. In contrast in a different NOD genetic background, in this case in the presence of a transgenic T-cell receptor, deficiency of *Mertk* leads to an exacerbation of the rate of spontaneous disease [41]. In humans, MERTK expressed on dendritic cells has been shown to be an important negative regulator of T cell activation, whereby MERTK expressed by tolerogenic dendritic cells suppresses T cell activation and proliferation [42]. The ability of MERTK to suppress activated T cells may extend to previously activated memory T cells [42], providing a clear and plausible link between increased MERTK expression and protection against MS susceptibility, as observed in our *DR15* homozygous population: a population in which increased expression of the antigen presenting molecules encoded by the *DR15* haplotype is hypothesised to lead to more efficient presentation of encephalitogenic peptides and increased activation of autoreactive T cells [43]. What is not clear is why this link breaks down in the *DR15* negative population, where increased MERTK expression is associated with MS risk. In this negative population, where antigen presentation and subsequent T cell activation may not be such a clear driving force for susceptibility, it is possible that other factors may be at work, perhaps involving similar biological processes to that observed in NOD mice, where deficiency of *Mertk* reduces susceptibility to spontaneous diabetes.

One of the overarching objectives of studies attempting to define disease susceptibility variants is to identify genes and pathways for intervention. In the absence of good predictors of

disease susceptibility, the pathways most amenable to intervention are those still active in controlling clinical course in established disease. In this study we have presented evidence that, in addition to disease susceptibility, MERTK expression associated variants may also be related to severity measures, specifically the rate of conversion from the relapsing-remitting phase of RRMS to progression. We found that, consistent with the discordant association in the presence or absence of *DR15*, the allele associated with high expression of MERTK was associated with a decreased prevalence of MS in *DR15* positive homozygotes, and a higher prevalence of MS in the absence of *DR15*. These data highlight the potential of MERTK as a therapeutic target, although the *DR15* status of the patient would likely determine whether activation or repression of MERTK signalling would be the appropriate intervention.

Materials and Methods

Ethics statement

Recruitment of subjects and collection of tissue and DNA was approved by the Melbourne Health Human Research Ethics Committee (Project number: 2013.111), the Eastern Health Human Research and Ethics committee (Reference number: SERP27/1314) and the Australian Bone Marrow Donor Registry Ethics Committee (Project number: 2006/02). All Human Research Ethics Committees which provided approval for this research are guided by national standards as outlined in the National Statement on Ethical Conduct in Human Research (<https://www.nhmrc.gov.au/guidelines-publications/e72>) issued by the National Health and Medical Research Council (Australia). All cases and controls provided written consent for the use and storage of DNA and tissue samples.

Study subjects and DNA samples

The 3268 MS cases and 3579 healthy controls genotyped for the fine-mapping component of this study formed part of a larger ANZgene MS loci fine-mapping study, and were phenotyped according to established criteria [27]. To assess for potential population stratification, principal component analysis was performed and genomic inflation was determined to be 1.10, and outlier samples removed as previously described [14]. We estimated the power of the sample used for fine mapping using the online genetic power calculator (<http://pngu.mgh.harvard.edu/~purcell/gpc/>). The sample was estimated to have high power (>90%) for both variants of moderate frequency with moderate risk (eg. MAF = 0.3, marker = 0.3, $D' = 0.99$, disease prevalence = 0.001 and relative risk = 1.2; $\alpha = 0.05$), as well as for variants of low frequency with a stronger risk (MAF = 0.05, marker = 0.05, $D' = 0.99$, disease prevalence = 0.001 and relative risk = 1.6; $\alpha = 0.05$).

A subset of these samples (1500 cases and 1500 controls) were used for association testing of the variants identified in the resequencing component of the study. The subjects used for the resequencing component of the study were excluded from association analysis of identified variants. We used the online genetic power calculator (<http://pngu.mgh.harvard.edu/~purcell/gpc/>) with the following assumptions and calculated a minimum sample size for 80% power (at $\alpha = 0.05$) of 1465 cases: MAF 0.02 (and "marker" at the same frequency since we predicted that re-sequencing will identify biologically relevant variants that we directly test); $D' = 1$, disease prevalence = 0.001 and relative risk = 1.618. A small subset of samples used in resequencing were re-recruited for RNA sequencing analysis ($n = 5$ cases; $n = 3$ controls).

Subjects ($n = 67$ MS cases and 98 healthy controls) were recruited for the analysis of expression of MS risk-associated variants as part of a larger study and according to the criteria described previously [44]. These samples were also genotyped as part of the associating testing following variant identification.

Whole genome sequencing

A sequence-ready DNA library of short sequences for whole genome sequencing was prepared using the TruSeq PCR-free library preparation kit (Illumina, San Diego, CA). The sample library was uniquely barcoded and sequenced on a single lane of an Illumina HiSeq 2000 sequencer (Illumina, San Diego CA).

Amplicon design and targeted resequencing

PCR amplicons were designed to tile completely the genomic region of the MERTK gene (*GRCh37/hg19* region chr2:112,645,298–112,789,127). Illumina short read sequencing libraries were constructed for each individual DNA sample after targeted capture and amplification of the MERTK locus based on the amplicon tiling design. Libraries for sequencing were prepared by the Australian Genome Research Facility (AGRF) and uniquely barcoded. All libraries were then sequenced in a multiplexed fashion within a single lane of an Illumina MiSeq sequencer by AGRF.

Variant discovery

Sequencing output was demultiplexed and base calling quality scores were verified using FastQC software which confirmed that reads were of uniformly high quality ($Q > 30$). We mapped all reads to the human reference genome build GRCh37/hg19 using the BWA aligner [45]. Across all samples a minimum of 90% of sequence reads mapped successfully to the reference genome, and this resulted in an average read depth of at least 40X in the target (*MERTK*) locus, giving more than sufficient depth to make robust sequence variant calls. We used Picard (<http://picard.sourceforge.net>) to remove PCR and optical duplicate reads. To call sequence variants [SNPs and insertions-deletions (in-dels)] we used GATK v3.1 [46] and implemented the GATK DNA-sequence variant calling best practice guidelines [47,48].

Genotyping

Genotyping of the full sample set for the fine-mapping phase was performed using 1536 custom GoldenGate assay according to manufacturer's instructions [27]. Target specific primers for KASP (Kompetitive Allele Specific PCR) genotyping were designed for short variants (SNPs and in-dels) identified during the variant discovery phase and chosen for association testing, with each assay validated using samples of known genotypes. Assays that failed at either the design phase or during validation were then redesigned for the Sequenom MassArray system using iPLEX Gold chemistry, and assays validated using samples of known genotypes. Assays that also failed redesign were discarded. KASP assays were conducted by LGC genomics (Teddington, UK) and Sequenom MassArray genotyping was performed by the Garvan Molecular Genetics Service (Darlinghurst, Australia). All assays were plotted using cluster analysis software [KRAKEN (LGC Genomics, Teddington, UK)] and scored visually to ensure genotypes were correctly assigned. Two large variants not suitable for KASP genotyping (AluYf4 retrotransposon insertion and TA_nT_n repeat expansion) were assessed using PCR in a subset of samples and not included in association analysis. Sequences of primers were as follows: AluYf4 retrotransposon insertion forward (ATCACTGGGCCTGAAATCTG), reverse (CATGCCTTGGCATCACTTTT); TA_nT_n repeat expansion forward (GGGTCTAGCACCTAACCTG), reverse (CCACGAAACCTACCCTGAAA).

Association analysis

Prior to testing for association, all markers were assessed for Hardy-Weinberg equilibrium (HWE). Any variants that deviated from HWE ($p < 0.001$; S1 Table) in the control or case

group were then carefully re-assessed for quality of genotyping by cluster plot analysis and comparison of called genotypes to known genotypes from sequencing data, or to HLA typing where available in the case of *HLA-DRB1*15:01*. Markers that showed evidence of poor quality genotyping were excluded from further analysis.

Association of variants (SNPs and in-dels) was measured using the allelic association test [1 degree of freedom (d.f.) or the genotyping test (2 d.f.) as appropriate using PLINK (v1.07; <http://pngu.mgh.harvard.edu/~purcell/plink/>).

We used standard logistic regression (R v3.1.2; <https://www.r-project.org/>) to identify potential interactions with *DR15* in the context of association. To test for statistical interaction between rs7422195 genotype and *HLA-DR15* status in the context of MS disease association, we constructed a standard logistic regression model with a response (output) term for MS disease status, and covariate (input) terms for rs7422195 genotype, *HLA-DR15* status and the corresponding multiplicative interaction term between these two covariates (the rs7422195-*DR15* interaction term). The interaction *p*-value is the *p*-value associated with the rs7422195-*DR15* interaction term in this logistic regression model. A significant interaction *p*-value implies that the disease risk profile of *DR15* homozygous individuals across the possible rs7422195 genotypes (GG, AG, AA) is significantly different to the disease risk profile of *DR15* negative and heterozygous individuals across these rs7422195 genotypes.

Haplotype construction and association analysis

Haplotypes were constructed and analysed for association using Haploview (v4.2; <https://www.broadinstitute.org/scientific-community/science/programs/medical-and-population-genetics/haploview/haploview>) using the confidence intervals algorithm. As default settings exclude $MAF < 0.05$, all analyses were altered to include $MAF > 0.01$. All blocks identified using this algorithm were tested for association within Haploview using chi-square tests.

Cell subset purification

Immune cell subsets for RNA isolation were purified from Peripheral Blood Mononuclear Cells (PBMCs) using whole blood collected between 9am and 12pm. PBMCs were isolated from MS patients and controls using histopaque (Sigma-Aldrich, St Louis, MO) density gradient separation. $CD4^{+ve}$ cells, $CD8^{+ve}$ cells and B lymphocytes ($CD19^{+ve}$) were purified using magnetic bead separation (positive selection) using Human Microbeads directed against the indicated cell surface markers as per the manufacturer's instructions (Miltenyi Biotec, Macquarie Park, Australia). For $CD14^{+ve}$ monocyte purification, a monocyte enrichment kit (Stemcell Technologies, Tullamarine, Australia) was used prior to selection of $CD14^{+ve}$ cells with human CD14 Microbeads (Miltenyi Biotec, Macquarie Park, Australia) and magnetic bead purification. For Natural Killer (NK) cell ($CD3^{-ve}CD56^{+ve}$) purification, an NK enrichment kit (Stemcell Technologies, Tullamarine, Australia) was used as per manufacturer's instructions prior to positive selection using human CD56 Microbeads (Miltenyi Biotec, Macquarie Park, Australia). Purified subsets were stored in RLT buffer (Qiagen) for subsequent RNA extraction. Purity of the subsets was determined by flow cytometry.

Flow cytometric analysis

Purity of immune cell subtypes was assessed by labeling purified fractions with the antibodies CD4-PerCp (VIT4; Miltenyi Biotec, Macquarie Park, Australia), CD8-FITC (BW135/80; Miltenyi Biotec, Macquarie Park, Australia), CD20-PE (B lymphocytes; LT20; Miltenyi Biotec, Macquarie Park, Australia), CD14-PE (TUK4) and CD3-FITC (HIT3a; BD Pharmingen, Sparks, MD)/CD56-APC (AF12-7H3; Miltenyi Biotec, Macquarie Park, Australia) for NK cells. Flow

cytometry of labeled PBMC and purified cell subsets was performed using a CyAn ADP analyzer (Beckman Coulter) and the data analysed using WEASEL (v3.0). Purified fractions for each of the cell subsets were only used in subsequent analyses if purity was 90% or greater.

In order to assess MERTK expression on the surface of monocytes, PBMCs were isolated from whole blood and monocytes identified using antibodies directed against the markers CD14-PE [TUK4 (Miltenyi Biotec, Macquarie Park, Australia)] and CD16-FITC [VEP13 (Miltenyi Biotec, Macquarie Park, Australia)] as previously described [44]. Cell surface MERTK protein was detected using human Mer APC-conjugated antibody [Clone #125518 (R&D Systems, Minneapolis, MN)] and compared with the appropriate isotype control [APC-conjugated Mouse IgG1, IS5-21F5 (Miltenyi Biotec, Macquarie Park, Australia)].

Expression analysis of immune cell subsets

We extracted RNA from purified immune cell subsets and expression microarray hybridizations were performed using the WT Expression kit (Life Technologies, CA, USA), WT Terminal Labelling and Controls Kit (Affymetrix, CA, USA) and Affymetrix Human Gene_1.0ST arrays. The probed arrays were washed and stained using the GeneChip Hybridization Wash and Stain Kit (Affymetrix, CA, USA) and scanned using the GeneChip Scanner 3000. Images (.dat files) were processed using GeneChip Command Console (Affymetrix, CA, USA) and the CEL files generated were used for further analysis. Expression data was linearised by transformation to a \log_2 scale and normalised using the removal of unwanted variation, 2-step (RUV-2) method [49]. Combined case and control datasets were used to identify *cis* eQTL associations across each cell type using an additive linear model. Statistically significant eQTL associations were defined as having $p < 0.05$ following correction for multiple testing (ie. $P < 0.05$ and $FDR < 0.05$).

MERTK expression analysis in monocytes using RNA sequencing (RNAseq)

Total RNA was isolated from purified monocytes using the Qiagen RNeasy minikit (Qiagen, Hilden, Germany) according to manufacturer's instructions. We then enriched the samples for mRNA using the Ambion polyA purist kit (ThermoFisher Scientific, Waltham, MA) according to manufacturer's instructions. Libraries for sequencing were prepared by the Australian Genome Research Facility (AGRF) from 200ng mRNA, with the mRNA from each individual ligated with a unique multiplex tag. Libraries were then pooled and divided across 3 lanes of the Illumina HiSeq sequencer (Illumina San Diego, CA), sequenced with 100bp single end reads and read quality assessed using FastQC (<http://www.bioinformatics.bbsrc.ac.uk/projects/fastqc/>). Untrimmed reads were aligned to human GRCh37/hg19 genome using Subjunc aligner within the Subread software package [50]. Sequencing data was summarized into reads per transcript using FeatureCounts [51] against the GENCODE 19 gene/isoform models for the human GRCh37/hg19 reference genome (July 2013 freeze) [52].

Normalisation and statistical analysis on the count data were executed using edgeR [53], keeping only those genes with > 10 counts per million (CPM) in all samples of at least one of the two sample groups. Library sizes were between 83M and 91M reads and all samples were included in the analysis. Differential expression analysis was adjusted by edgeR for varying sequencing depths, and all normalisation factors were between 0.97 and 1.02 indicating that the data set was well-balanced. The data was scaled using trimmed mean of M-values (TMM) [54] and differentially expressed genes were called between the two sample groups if Benjamini-Hochberg false discovery rate ($FDR < 0.05$). Annotation was added using the Ensembl human gene annotation using the R biomaRt package [55]. To visualise intron-exon

boundaries and exon-exon junctions, mapped sequences were imported in the Integrative Genomics Viewer (IGV v.2.3.35; <https://www.broadinstitute.org/software/igv/home>).

Reverse transcription PCR

Total RNA from monocytes was prepared as for expression analysis and reverse transcribed into cDNA using a Taqman Reverse Transcription kit according to manufacturer's instructions (Applied Biosystems, Scoresby, Australia). A reverse primer located within the putative alternative final exon 20 (GACAATGATTGGGATAGAAACC) was used in conjunction with either a forward primer for the canonical exon 18 (GAAATAGCTACGCGGGGAAT) or a forward primer in the canonical exon 19 (GTGTATATCATGGAAAAAGACAAGGAT). Amplification of cDNA was performed for 35 cycles with primer annealing at 60°C and products visualised on a 2% (w/v) agarose gel.

Calculation of disease course

The prevalence of SPMS was determined using logistic regression analyses, whereby each patient was assigned a known duration of MS from diagnosis to time of collection, and at that same time was assessed as either RRMS or SPMS according to established criteria [14]. In conjunction with their genotype at rs7422195, regression analyses were performed to determine whether the rate of change of SPMS (ie the % of SPMS cases/total cases at any given duration of MS) was different dependent on genotype at rs7422195.

Statistical analysis

Gene expression data were analysed using either Student's *t*-test (for 2 groups) or one-way ANOVA (for >2 groups) followed by Tukey's multiple comparison correction (GraphPad PRISM v.6.0b; <http://www.graphpad.com/scientific-software/prism/>). Linear regression was used to analyse the relationship between *MERTK* gene expression and *MERTK* expression by monocytes (GraphPad PRISM v.6.0b). The proportion of monocytes expressing *MERTK* was performed using the Kruskal-Wallis test followed by Dunn's multiple comparison correction (GraphPad PRISM v.6.0b). All grouped expression data are plotted as Tukey box and whiskers. The relationship between *MERTK* genotype and Multiple Sclerosis severity was analysed using logistic regression (STATA v.12.1; <http://www.stata.com/>).

Supporting Information

S1 Fig. The rs7422195(A)-allele is associated with increased length of the TA_nT_n repeat expansion in intron 1. The size of the amplified PCR product including the TA_nT_n repeat within intron 1 was significantly increased in individuals homozygous for the rs7422195(A)-allele ($p < 0.0001$ GG vs AA). For technical reasons only the shortest allele present in any individual was amplified.

(PDF)

S1 Table. Hardy-Weinberg tests.

(PDF)

S2 Table. Apparent size of TA_nT_n repeat expansion in tested samples.

(PDF)

S3 Table. Analysis of linkage between rs13414207 and the intron 4 AluYf4 insertion in two populations.

(PDF)

Acknowledgments

We thank all participants in this study for their support of this research. We also thank Jim Stankovic and Alison Hamlett for technical assistance, and the Bioinformatics Core at the Florey for technical advice.

Australia and New Zealand Multiple Sclerosis Genetics Consortium (ANZGene) members: Alan Baxter, Allan G Kermode, Bruce Taylor, David R Booth, Deborah Mason, Graeme J Stewart, Helmut Butzkueven, Jac Charlesworth, James Wiley, Jeannette Lechner-Scott, Judith Field, Lotti Tajouri, Lyn Griffiths, Mark Slee, Matthew A Brown, Pablo Moscato, Rodney J Scott, Simon Broadley, Steve Vucic, Trevor J Kilpatrick, William M Carroll

Author Contributions

Conceived and designed the experiments: MDB SF JF TJK AGB HB. Performed the experiments: MDB DM LJJ LG SEC RA GZMM AAP MMG LL MJFP MAJ JF. Analyzed the data: MDB ADF DM SEC GF TS MAJ JF. Contributed reagents/materials/analysis tools: MJFP HB JF MAJ AGB SF. Wrote the paper: MDB ADF TJK JF.

References

1. Ebers GC, Bulman DE, Sadovnick AD, Paty DW, Warren S, et al. (1986) A population-based study of multiple sclerosis in twins. *N Engl J Med* 315: 1638–1642. doi: [10.1056/NEJM198612253152603](https://doi.org/10.1056/NEJM198612253152603) PMID: [3785335](https://pubmed.ncbi.nlm.nih.gov/3785335/)
2. Ebers GC, Sadovnick AD, Risch NJ (1995) A genetic basis for familial aggregation in multiple sclerosis. Canadian Collaborative Study Group. *Nature* 377: 150–151. doi: [10.1038/377150a0](https://doi.org/10.1038/377150a0) PMID: [7675080](https://pubmed.ncbi.nlm.nih.gov/7675080/)
3. Sadovnick AD, Ebers GC, Dyment DA, Risch NJ (1996) Evidence for genetic basis of multiple sclerosis. The Canadian Collaborative Study Group. *Lancet* 347: 1728–1730. PMID: [8656905](https://pubmed.ncbi.nlm.nih.gov/8656905/)
4. Hansen T, Skytthe A, Stenager E, Petersen HC, Brønnum-Hansen H, et al. (2005) Concordance for multiple sclerosis in Danish twins: an update of a nationwide study. *Multiple Sclerosis Journal* 11: 504–510. PMID: [16193885](https://pubmed.ncbi.nlm.nih.gov/16193885/)
5. O’Gorman C, Lin R, Stankovich J, Broadley SA (2013) Modelling genetic susceptibility to multiple sclerosis with family data. *Neuroepidemiology* 40: 1–12. doi: [10.1159/000341902](https://doi.org/10.1159/000341902) PMID: [23075677](https://pubmed.ncbi.nlm.nih.gov/23075677/)
6. Jersild C, Fog T (1972) Histocompatibility (HL-A) antigens associated with multiple sclerosis. *Acta Neurol Scand, Suppl*: 51: 377.
7. Jersild C, Svejgaard A, Fog T (1972) HL-A antigens and multiple sclerosis. *Lancet* 1: 1240–1241.
8. Naito S, Namerow N, Mickey MR, Terasaki PI (1972) Multiple sclerosis: association with HL-A3. *Tissue Antigens* 2: 1–4. PMID: [5077731](https://pubmed.ncbi.nlm.nih.gov/5077731/)
9. Hauser SL, Fleischnick E, Weiner HL, Marcus D, Awdeh Z, et al. (1989) Extended major histocompatibility complex haplotypes in patients with multiple sclerosis. *Neurology* 39: 275–277. PMID: [2783768](https://pubmed.ncbi.nlm.nih.gov/2783768/)
10. Allen M, Sandberg-Wollheim M, Sjögren K, Erlich HA, Petterson U, et al. (1994) Association of susceptibility to multiple sclerosis in Sweden with HLA class II DRB1 and DQB1 alleles. *Hum Immunol* 39: 41–48. PMID: [8181961](https://pubmed.ncbi.nlm.nih.gov/8181961/)
11. Haegert DG, Francis GS (1993) HLA-DQ polymorphisms do not explain HLA class II associations with multiple sclerosis in two Canadian patient groups. *Neurology* 43: 1207–1210. PMID: [7909591](https://pubmed.ncbi.nlm.nih.gov/7909591/)
12. Consortium IMMSG, Hafler DA, Compston A, Sawcer S, Lander ES, et al. (2007) Risk alleles for multiple sclerosis identified by a genomewide study. *N Engl J Med* 357: 851–862. doi: [10.1056/NEJMoa073493](https://doi.org/10.1056/NEJMoa073493) PMID: [17660530](https://pubmed.ncbi.nlm.nih.gov/17660530/)
13. International Multiple Sclerosis Genetics Consortium, Wellcome Trust Case Control Consortium 2, Sawcer S, Hellenthal G, Pirinen M, et al. (2011) Genetic risk and a primary role for cell-mediated immune mechanisms in multiple sclerosis. *Nature* 476: 214–219. doi: [10.1038/nature10251](https://doi.org/10.1038/nature10251) PMID: [21833088](https://pubmed.ncbi.nlm.nih.gov/21833088/)
14. Australia and New Zealand Multiple Sclerosis Genetics Consortium (ANZgene) (2009) Genome-wide association study identifies new multiple sclerosis susceptibility loci on chromosomes 12 and 20. *Nat Genet* 41: 824–828. doi: [10.1038/ng.396](https://doi.org/10.1038/ng.396) PMID: [19525955](https://pubmed.ncbi.nlm.nih.gov/19525955/)
15. Beecham AH, Patsopoulos NA, Xifara DK, Davis MF, Kempainen A, et al. (2013) Analysis of immune-related loci identifies 48 new susceptibility variants for multiple sclerosis. *Nat Genet* 45: 1353–1360. doi: [10.1038/ng.2770](https://doi.org/10.1038/ng.2770) PMID: [24076602](https://pubmed.ncbi.nlm.nih.gov/24076602/)

16. Cirulli ET, Goldstein DB (2010) Uncovering the roles of rare variants in common disease through whole-genome sequencing. *Nat Rev Genet* 11: 415–425. doi: [10.1038/nrg2779](https://doi.org/10.1038/nrg2779) PMID: [20479773](https://pubmed.ncbi.nlm.nih.gov/20479773/)
17. Lai C, Lemke G (1991) An extended family of protein-tyrosine kinase genes differentially expressed in the vertebrate nervous system. *Neuron* 6: 691–704. PMID: [2025425](https://pubmed.ncbi.nlm.nih.gov/2025425/)
18. O'Bryan JP, Frye RA, Cogswell PC, Neubauer A, Kitch B, et al. (1991) *axl*, a transforming gene isolated from primary human myeloid leukemia cells, encodes a novel receptor tyrosine kinase. *Molecular and Cellular Biology* 11: 5016–5031. PMID: [1656220](https://pubmed.ncbi.nlm.nih.gov/1656220/)
19. Rescigno J, Mansukhani A, Basilico C (1991) A putative receptor tyrosine kinase with unique structural topology. *Oncogene* 6: 1909–1913. PMID: [1840679](https://pubmed.ncbi.nlm.nih.gov/1840679/)
20. Nagata K, Ohashi K, Nakano T, Arita H, Zong C, et al. (1996) Identification of the product of growth arrest-specific gene 6 as a common ligand for Axl, Sky, and Mer receptor tyrosine kinases. *Journal of Biological Chemistry* 271: 30022–30027. PMID: [8939948](https://pubmed.ncbi.nlm.nih.gov/8939948/)
21. Ohashi K, Nagata K, Toshima J, Nakano T, Arita H, et al. (1995) Stimulation of sky receptor tyrosine kinase by the product of growth arrest-specific gene 6. *Journal of Biological Chemistry* 270: 22681–22684. PMID: [7559388](https://pubmed.ncbi.nlm.nih.gov/7559388/)
22. Stitt TN, Conn G, Goret M, Lai C, Bruno J, et al. (1994) The anticoagulation factor protein S and its relative, Gas6, are ligands for the Tyro 3/Axl family of receptor tyrosine kinases. *Cell* 80: 661–670. doi: [10.1016/0092-8674\(95\)90520-0](https://doi.org/10.1016/0092-8674(95)90520-0)
23. Binder MD, Cate HS, Prieto AL, Kemper D, Butzkueven H, et al. (2008) Gas6 deficiency increases oligodendrocyte loss and microglial activation in response to cuprizone-induced demyelination. *J Neurosci* 28: 5195–5206. doi: [10.1523/JNEUROSCI.1180-08.2008](https://doi.org/10.1523/JNEUROSCI.1180-08.2008) PMID: [18480276](https://pubmed.ncbi.nlm.nih.gov/18480276/)
24. Ma GZM, Stankovich J, Australia and New Zealand Multiple Sclerosis Genetics Consortium (ANZgene), Kilpatrick TJ, Binder MD, et al. (2011) Polymorphisms in the receptor tyrosine kinase MERTK gene are associated with multiple sclerosis susceptibility. *PLoS ONE* 6: e16964. doi: [10.1371/journal.pone.0016964](https://doi.org/10.1371/journal.pone.0016964) PMID: [21347448](https://pubmed.ncbi.nlm.nih.gov/21347448/)
25. Weinger JG, Omari KM, Marsden K, Raine CS, Shafit-Zagardo B (2009) Up-regulation of soluble Axl and Mer receptor tyrosine kinases negatively correlates with Gas6 in established multiple sclerosis lesions. *The American Journal of Pathology* 175: 283–293. doi: [10.2353/ajpath.2009.080807](https://doi.org/10.2353/ajpath.2009.080807) PMID: [19541935](https://pubmed.ncbi.nlm.nih.gov/19541935/)
26. Ma GZ, Giuffrida LL, Gresle MM, Haartsen J, Laverick L, et al. (2015) Association of plasma levels of Protein S with disease severity in multiple sclerosis. *Multiple Sclerosis Journal—Experimental, Translational and Clinical* 1.
27. Cortes A, Field J, Glazov EA, Hadler J, Hadler J, et al. (2013) Resequencing and fine-mapping of the chromosome 12q13-14 locus associated with multiple sclerosis refines the number of implicated genes. *Hum Mol Genet* 22: 2283–2292. doi: [10.1093/hmg/ddt062](https://doi.org/10.1093/hmg/ddt062) PMID: [23406874](https://pubmed.ncbi.nlm.nih.gov/23406874/)
28. Kaer K, Speek M (2013) Retroelements in human disease. *Gene* 518: 231–241. doi: [10.1016/j.gene.2013.01.008](https://doi.org/10.1016/j.gene.2013.01.008) PMID: [23333607](https://pubmed.ncbi.nlm.nih.gov/23333607/)
29. Taniguchi-Ikeda M, Kobayashi K, Kanagawa M, Yu C-C, Mori K, et al. (2011) Pathogenic exon-trapping by SVA retrotransposon and rescue in Fukuyama muscular dystrophy. *Nature* 478: 127–131. doi: [10.1038/nature10456](https://doi.org/10.1038/nature10456) PMID: [21979053](https://pubmed.ncbi.nlm.nih.gov/21979053/)
30. Scalfari A, Neuhaus A, Daumer M, Muraro PA, Ebers GC (2014) Onset of secondary progressive phase and long-term evolution of multiple sclerosis. *J Neurol Neurosurg Psychiatry* 85: 67–75. doi: [10.1136/jnnp-2012-304333](https://doi.org/10.1136/jnnp-2012-304333) PMID: [23486991](https://pubmed.ncbi.nlm.nih.gov/23486991/)
31. Dickson SP, Wang K, Krantz I, Hakonarson H, Goldstein DB (2010) Rare variants create synthetic genome-wide associations. *PLoS Biol* 8: e1000294. doi: [10.1371/journal.pbio.1000294](https://doi.org/10.1371/journal.pbio.1000294) PMID: [20126254](https://pubmed.ncbi.nlm.nih.gov/20126254/)
32. Hunt KA, Mistry V, Bockett NA, Ahmad T, Ban M, et al. (2013) Negligible impact of rare autoimmune-locus coding-region variants on missing heritability. *Nature* 498: 232–235. doi: [10.1038/nature12170](https://doi.org/10.1038/nature12170) PMID: [23698362](https://pubmed.ncbi.nlm.nih.gov/23698362/)
33. Gu BJ, Field J, Duterte S, Ou A, Kilpatrick TJ, et al. (2015) A rare P2X7 variant Arg307Gln with absent pore formation function protects against neuroinflammation in multiple sclerosis. *Hum Mol Genet*. doi: [10.1093/hmg/ddv278](https://doi.org/10.1093/hmg/ddv278)
34. Wang K, Dickson SP, Stolle CA, Krantz ID, Goldstein DB, et al. (2010) Interpretation of association signals and identification of causal variants from genome-wide association studies. *Am J Hum Genet* 86: 730–742. doi: [10.1016/j.ajhg.2010.04.003](https://doi.org/10.1016/j.ajhg.2010.04.003) PMID: [20434130](https://pubmed.ncbi.nlm.nih.gov/20434130/)
35. Chong KKL, Chiang SWY, Wong GWK, Tam POS, Ng T-K, et al. (2008) Association of CTLA-4 and IL-13 gene polymorphisms with Graves' disease and ophthalmopathy in Chinese children. *Invest Ophthalmol Vis Sci* 49: 2409–2415. doi: [10.1167/iops.07-1433](https://doi.org/10.1167/iops.07-1433) PMID: [18296657](https://pubmed.ncbi.nlm.nih.gov/18296657/)

36. Parkes M, Cortes A, van Heel DA, Brown MA (2013) Genetic insights into common pathways and complex relationships among immune-mediated diseases. *Nat Rev Genet* 14: 661–673. doi: [10.1038/nrg3502](https://doi.org/10.1038/nrg3502) PMID: [23917628](https://pubmed.ncbi.nlm.nih.gov/23917628/)
37. Bogie JFJ, Stinissen P, Hendriks JJA (2014) Macrophage subsets and microglia in multiple sclerosis. *Acta Neuropathol* 128: 191–213. doi: [10.1007/s00401-014-1310-2](https://doi.org/10.1007/s00401-014-1310-2) PMID: [24952885](https://pubmed.ncbi.nlm.nih.gov/24952885/)
38. Ganguly D, Haak S, Sisirak V, Reizis B (2013) The role of dendritic cells in autoimmunity. *Nat Rev Immunol* 13: 566–577. doi: [10.1038/nri3477](https://doi.org/10.1038/nri3477) PMID: [23827956](https://pubmed.ncbi.nlm.nih.gov/23827956/)
39. Hoppmann N, Graetz C, Paterka M, Poisa-Beiro L, Larochelle C, et al. (2015) New candidates for CD4 T cell pathogenicity in experimental neuroinflammation and multiple sclerosis. *Brain*. doi: [10.1093/brain/awu408](https://doi.org/10.1093/brain/awu408)
40. Wallet MA, Flores RR, Wang Y, Yi Z, Kroger CJ, et al. (2009) MerTK regulates thymic selection of autoreactive T cells. *Proceedings of the National Academy of Sciences* 106: 4810–4815. doi: [10.1073/pnas.0900683106](https://doi.org/10.1073/pnas.0900683106)
41. Wallet MA, Sen P, Flores RR, Wang Y, Yi Z, et al. (2008) MerTK is required for apoptotic cell-induced T cell tolerance. *Journal of Experimental Medicine* 205: 219–232. doi: [10.1084/jem.20062293](https://doi.org/10.1084/jem.20062293) PMID: [18195070](https://pubmed.ncbi.nlm.nih.gov/18195070/)
42. Cabezón R, Carrera-Silva EA, Flórez-Grau G, Errasti AE, Calderón-Gómez E, et al. (2015) MERTK as negative regulator of human T cell activation. *Journal of Leukocyte Biology* 97: 751–760. doi: [10.1189/jlb.3A0714-334R](https://doi.org/10.1189/jlb.3A0714-334R) PMID: [25624460](https://pubmed.ncbi.nlm.nih.gov/25624460/)
43. Rasmussen HB, Kelly MA, Clausen J (2001) Additive effect of the HLA-DR15 haplotype on susceptibility to multiple sclerosis. *Multiple Sclerosis Journal* 7: 91–93. PMID: [11424637](https://pubmed.ncbi.nlm.nih.gov/11424637/)
44. Field J, Shahjani F, Schibeci S, Australia and New Zealand MS Genetics Consortium (ANZgene), Johnson L, et al. (2015) The MS Risk Allele of CD40 Is Associated with Reduced Cell-Membrane Bound Expression in Antigen Presenting Cells: Implications for Gene Function. *PLoS ONE* 10: e0127080. doi: [10.1371/journal.pone.0127080](https://doi.org/10.1371/journal.pone.0127080) PMID: [26068105](https://pubmed.ncbi.nlm.nih.gov/26068105/)
45. Li H, Durbin R (2009) Fast and accurate short read alignment with Burrows-Wheeler transform. *Bioinformatics* 25: 1754–1760. doi: [10.1093/bioinformatics/btp324](https://doi.org/10.1093/bioinformatics/btp324) PMID: [19451168](https://pubmed.ncbi.nlm.nih.gov/19451168/)
46. McKenna A, Hanna M, Banks E, Sivachenko A, Cibulskis K, et al. (2010) The Genome Analysis Toolkit: a MapReduce framework for analyzing next-generation DNA sequencing data. *Genome Res* 20: 1297–1303. doi: [10.1101/gr.107524.110](https://doi.org/10.1101/gr.107524.110) PMID: [20644199](https://pubmed.ncbi.nlm.nih.gov/20644199/)
47. DePristo MA, Banks E, Poplin R, Garimella KV, Maguire JR, et al. (2011) A framework for variation discovery and genotyping using next-generation DNA sequencing data. *Nat Genet* 43: 491–498. doi: [10.1038/ng.806](https://doi.org/10.1038/ng.806) PMID: [21478889](https://pubmed.ncbi.nlm.nih.gov/21478889/)
48. Van der Auwera GA, Carneiro MO, Hartl C, Poplin R, Del Angel G, et al. (2013) From FastQ data to high confidence variant calls: the Genome Analysis Toolkit best practices pipeline. *Curr Protoc Bioinformatics* 11: 11.10.1–11.10.33. doi: [10.1002/0471250953.bi1110s43](https://doi.org/10.1002/0471250953.bi1110s43)
49. Gagnon-Bartsch JA, Speed TP (2012) Using control genes to correct for unwanted variation in microarray data. *Biostatistics* 13: 539–552. doi: [10.1093/biostatistics/kxr034](https://doi.org/10.1093/biostatistics/kxr034) PMID: [22101192](https://pubmed.ncbi.nlm.nih.gov/22101192/)
50. Liao Y, Smyth GK, Shi W (2013) The Subread aligner: fast, accurate and scalable read mapping by seed-and-vote. *Nucleic Acids Research* 41: e108. doi: [10.1093/nar/gkt214](https://doi.org/10.1093/nar/gkt214) PMID: [23558742](https://pubmed.ncbi.nlm.nih.gov/23558742/)
51. Liao Y, Smyth GK, Shi W (2014) featureCounts: an efficient general purpose program for assigning sequence reads to genomic features. *Bioinformatics* 30: 923–930. doi: [10.1093/bioinformatics/btt656](https://doi.org/10.1093/bioinformatics/btt656) PMID: [24227677](https://pubmed.ncbi.nlm.nih.gov/24227677/)
52. Harrow J, Denoeud F, Frankish A, Reymond A, Chen C-K, et al. (2006) GENCODE: producing a reference annotation for ENCODE. *Genome Biol* 7 Suppl 1: S4.1–S4.9. doi: [10.1186/gb-2006-7-s1-s4](https://doi.org/10.1186/gb-2006-7-s1-s4)
53. Robinson MD, McCarthy DJ, Smyth GK (2010) edgeR: a Bioconductor package for differential expression analysis of digital gene expression data. *Bioinformatics* 26: 139–140. doi: [10.1093/bioinformatics/btp616](https://doi.org/10.1093/bioinformatics/btp616) PMID: [19910308](https://pubmed.ncbi.nlm.nih.gov/19910308/)
54. Robinson MD, Oshlack A (2010) A scaling normalization method for differential expression analysis of RNA-seq data. *Genome Biol* 11: R25. doi: [10.1186/gb-2010-11-3-r25](https://doi.org/10.1186/gb-2010-11-3-r25) PMID: [20196867](https://pubmed.ncbi.nlm.nih.gov/20196867/)
55. Durinck S, Spellman PT, Birney E, Huber W (2009) Mapping identifiers for the integration of genomic datasets with the R/Bioconductor package biomaRt. *Nat Protoc* 4: 1184–1191. doi: [10.1038/nprot.2009.97](https://doi.org/10.1038/nprot.2009.97) PMID: [19617889](https://pubmed.ncbi.nlm.nih.gov/19617889/)