

**the earth will expose the blood shed on it and conceal the
murdered no longer**

Author

Mosely, Timothy

Published

2019

Version

Version of Record (VoR)

Rights statement

© 2019 Tim R. Mosely. The attached file is reproduced here with permission of the copyright holder. For further information please contact the author. See: <https://www.timmosely.com/>

Downloaded from

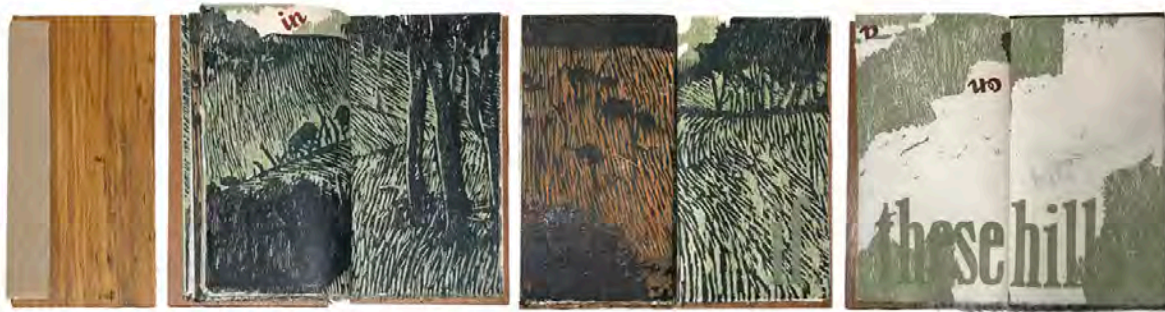
<http://hdl.handle.net/10072/391133>

Link to published version

<https://www.neram.com.au/event/the-residents/>

Griffith Research Online

<https://research-repository.griffith.edu.au>



artists book, codex; a triptych of single segment folios between plywood covers, colour reduction woodblocks and letterpress on Awagami Kozo, plywood, 52 x 68 cm (open), 2019, (variable edition of 3)

“the earth will expose the blood shed on it and conceal the murdered no longer” (artists book) 2018

made in conjunction with

“on a windy day towards ben lomond in the new england tablelands” (print triptych) 2018

these works were produced during a 2018 Packsaddle Artists in Residency at NERAM & MOP, both have been accepted for the New England Regional Art Museum Collection,

exhibited in, *the Residents* New England Regional Art Museum, Armidale, NSW, 2019



print triptych, colour reduction woodblocks prints and letterpress on Awagami Kozo, 300 x 64 cm, 2018, (variable edition of 3)



Informational text panel on the wall to the right of the artwork.

Small informational text panel on the wall below the artwork.

