

**The impact of reduction in intensity of mechanical ventilation upon venovenous ECMO initiation on radiographically assessed lung edema scores: A retrospective observational study**

Author

Worku, ET, Yeung, F, Anstey, C, Shekar, K

Published

2022

Journal Title

Frontiers in Medicine

Version

Version of Record (VoR)

DOI

[10.3389/fmed.2022.1005192](https://doi.org/10.3389/fmed.2022.1005192)

Rights statement

© 2022 Worku, Yeung, Anstey and Shekar. This is an open-access article distributed under the terms of the Creative Commons Attribution License (CC BY). The use, distribution or reproduction in other forums is permitted, provided the original author(s) and the copyright owner(s) are credited and that the original publication in this journal is cited, in accordance with accepted academic practice. No use, distribution or reproduction is permitted which does not comply with these terms.

Downloaded from

<http://hdl.handle.net/10072/421683>

Griffith Research Online

<https://research-repository.griffith.edu.au>



## OPEN ACCESS

## EDITED BY

Denise Battaglini,  
San Martino Hospital (IRCCS), Italy

## REVIEWED BY

Yi Yang,  
Southeast University, China  
Songqiao Liu,  
Southeast University, China

## \*CORRESPONDENCE

Elliott T. Worku  
elliott.worku@health.qld.gov.au

## SPECIALTY SECTION

This article was submitted to  
Intensive Care Medicine and  
Anesthesiology,  
a section of the journal  
Frontiers in Medicine

RECEIVED 28 July 2022

ACCEPTED 26 August 2022

PUBLISHED 20 September 2022

## CITATION

Worku ET, Yeung F, Anstey C and  
Shekar K (2022) The impact of  
reduction in intensity of mechanical  
ventilation upon venovenous ECMO  
initiation on radiographically assessed  
lung edema scores: A retrospective  
observational study.  
*Front. Med.* 9:1005192.  
doi: 10.3389/fmed.2022.1005192

## COPYRIGHT

© 2022 Worku, Yeung, Anstey and  
Shekar. This is an open-access article  
distributed under the terms of the  
[Creative Commons Attribution License  
\(CC BY\)](https://creativecommons.org/licenses/by/4.0/). The use, distribution or  
reproduction in other forums is  
permitted, provided the original  
author(s) and the copyright owner(s)  
are credited and that the original  
publication in this journal is cited, in  
accordance with accepted academic  
practice. No use, distribution or  
reproduction is permitted which does  
not comply with these terms.

# The impact of reduction in intensity of mechanical ventilation upon venovenous ECMO initiation on radiographically assessed lung edema scores: A retrospective observational study

Elliott T. Worku <sup>1,2\*</sup>, Francis Yeung<sup>1</sup>, Chris Anstey<sup>2,3</sup> and Kiran Shekar<sup>1,2,4</sup>

<sup>1</sup>Adult Intensive Care Services, The Prince Charles Hospital, Brisbane, QLD, Australia, <sup>2</sup>Faculty of Medicine, University of Queensland, Brisbane, QLD, Australia, <sup>3</sup>School of Medicine, Griffith University, Sunshine Coast Campus, Birtinya, QLD, Australia, <sup>4</sup>Institute of Health and Biomedical Innovation, Queensland University of Technology, Brisbane, QLD, Australia

**Background:** Patients with severe acute respiratory distress syndrome (ARDS) typically receive ultra-protective ventilation after extracorporeal membrane oxygenation (ECMO) is initiated. While the benefit of ECMO appears to derive from supporting “lung rest”, reductions in the intensity of mechanical ventilation, principally tidal volume limitation, may manifest radiologically. This study evaluated the relative changes in radiographic assessment of lung edema (RALE) score upon venovenous ECMO initiation in patients with severe ARDS.

**Methods:** Digital chest x-rays (CXR) performed at baseline immediately before initiation of ECMO, and at intervals post (median 1.1, 2.1, and 9.6 days) were reviewed in 39 Adult ARDS patients. One hundred fifty-six digital images were scored by two independent, blinded radiologists according to the RALE (Radiographic Assessment of Lung Edema) scoring criteria. Ventilatory data, ECMO parameters and fluid balance were recorded at corresponding time points. Multivariable analysis was performed analyzing the change in RALE score over time relative to baseline.

**Results:** The RALE score demonstrated excellent inter-rater agreement in this novel application in an ECMO cohort. Mean RALE scores increased from 28 (22–37) at baseline to 35 (26–42) ( $p < 0.001$ ) on D1 of ECMO; increasing RALE was associated with higher baseline APACHE III scores [ $\beta$  value +0.19 (0.08, 0.30)  $p = 0.001$ ], and greater reductions in tidal volume [ $\beta$  value –2.08 (–3.07, –1.10)  $p < 0.001$ ] after ECMO initiation. Duration of mechanical ventilation, and ECMO support did not differ between survivors and non-survivors.

**Conclusions:** The magnitude of reductions in delivered tidal volumes correlated with increasing RALE scores (radiographic worsening) in ARDS

patients receiving ECMO. Implications for patient centered outcomes remain unclear. There is a need to define appropriate ventilator settings on venovenous ECMO, counterbalancing the risks vs. benefits of optimal “lung rest” against potential atelectrauma.

#### KEYWORDS

acute respiratory distress syndrome, extracorporeal membrane oxygenation, mechanical ventilation (lung protection) strategy, radiographic assessment scoring systems, RALE

## Introduction

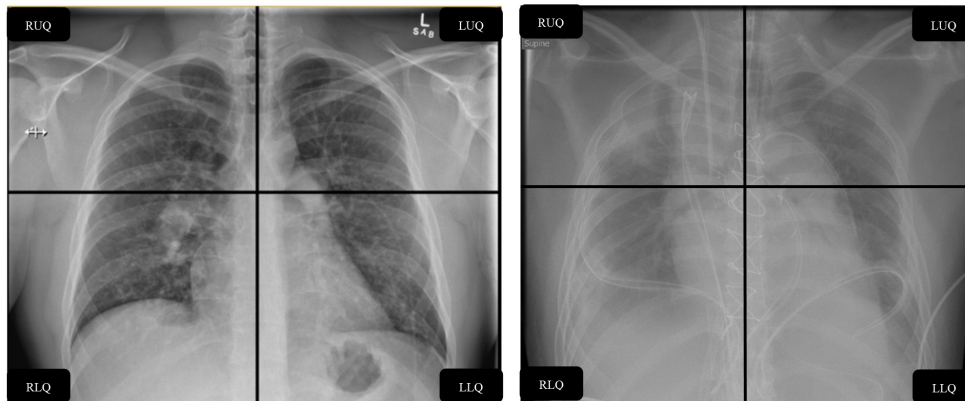
ARDS accounts for some 10% of intensive care admissions, and 20% of those requiring invasive ventilation (1), yet our understanding of this heterogeneous syndrome and its management continues to evolve. Venovenous extracorporeal membrane oxygenation, provides life-saving support to patients with severe acute respiratory distress syndrome (2), and recent RCT data suggests that earlier implementation is associated with improved survival (3). Reduced tidal volumes, respiratory rates, and driving pressures are commonly adopted after the commencement of ECMO (4–8), yet consensus is lacking regarding how best to apportion ventilation of the native and membrane lungs, respectively (8, 9). Under ECMO, one may drastically “drop” the native lung, enforcing ultra-protective ventilation (10, 11).

However, this may engender atelectasis, worsening intrapulmonary shunt (12). Maintenance of adequate extracorporeal blood flows (13) upon which oxygenation will depend when the native lung is “rested”, typically necessitates fluid administration, with increasing fluid balance and extravascular lung water, which may prolong mechanical ventilation (14) and increase mortality on ECMO (15). Increases in lung opacification are anecdotally known to occur shortly after commencing venovenous ECMO (16), and may correlate with mortality based on observational data. The immediacy of this radiological change may result from “dropping the lung” on ECMO (17), exogenous fluid administration, and potential biological injuries inflicted by the extracorporeal circuit (18–20). Bilateral radiographic opacities are intrinsic to the Berlin diagnostic criteria for ARDS diagnosis (21), yet radiological assessment is not objectively standardized. In a study by Rubinfeld et al. there was only moderate agreement achieved in radiological determination of ARDS diagnosis against the predecessor definition of ARDS (kappa 0.55) (22) with as much as a two-fold difference in diagnostic rates as determined (36 vs. 71%) by individual clinicians. In another study, interrater agreement of radiological interpretation was extremely poor between critical care physicians (Kappa 0.05) (23). In the absence of a primary pneumonic cause with florid

bilateral consolidation, 13.6% of patients may not even reach a consensus diagnosis of ARDS, yet the mortality in this contented group remains as high as in confirmed ARDS cases (24). The radiographic assessment of lung edema (RALE) score was recently developed to better communicate radiographic changes and has been validated in ARDS cohorts (25), including patients with COVID-19 RDS (26, 27). The score provides a semi-quantitative measure of gravimetric lung edema, and has consistently shown excellent interrater agreement (25, 28), accurately discriminates ARDS from other causes of respiratory failure, and predicts the need for mechanical ventilation arising (27). While the relationship between baseline RALE scores and mortality is inconsistent, there is evidence in COVID-19 that the trend in RALE score in the days following intubation has prognostic relevance (27). As first described by Warren and colleagues (25), the lung fields are divided into quadrants and assigned scores describing the extent and degree of radiological consolidation with a maximum score of 48 (Figure 1). This score has consistently demonstrated excellent interobserver agreement (25, 28), and may improve the utility of CXR, a low cost, and widely available imaging modality that has obvious logistical benefits to CT imaging, especially in light of the unprecedented global pandemic. In this retrospective, single center observational study, we described evolution of radiographic consolidation after the commencement of ECMO. We hypothesized that native lung opacification may be influenced by the degree of lung rest enforced under ECMO, such that RALE scores would increase with reductions in delivered tidal volumes and PEEP, higher fluid balance, and greater ECMO blood flows.

## Methods

We performed a retrospective search of patients at our ELSO (Extracorporeal Life Support Organisation) accredited center, to identify all patients with a diagnosis of ARDS (recorded in our electronic admission and clinical information system) who received VVECMO over a 7-year period between January 1st 2012 and December 31st 2019.



**Left radiograph (baseline pre-ECMO)**

Score	RUQ	RLQ	LUQ	LLQ	Total
Consolidation	3	3	2.5	3	
Density	1	1.5	1	1	
Quadrant score	3 (3 × 1)	4.5 (3 × 1.5)	2.5 (2.5 × 1)	3 (3 × 1)	13

**Right radiograph (first CXR during ECMO)**

Score	RUQ	RLQ	LUQ	LLQ	Total
Consolidation	3.5	3.5	3.5	4	
Density	3	2.5	2.5	3	
Quadrant score	10.5 (3 × 3.5)	8.75 (3.5 × 2.5)	8.75 (3.5 × 2.5)	12 (4 × 3)	40

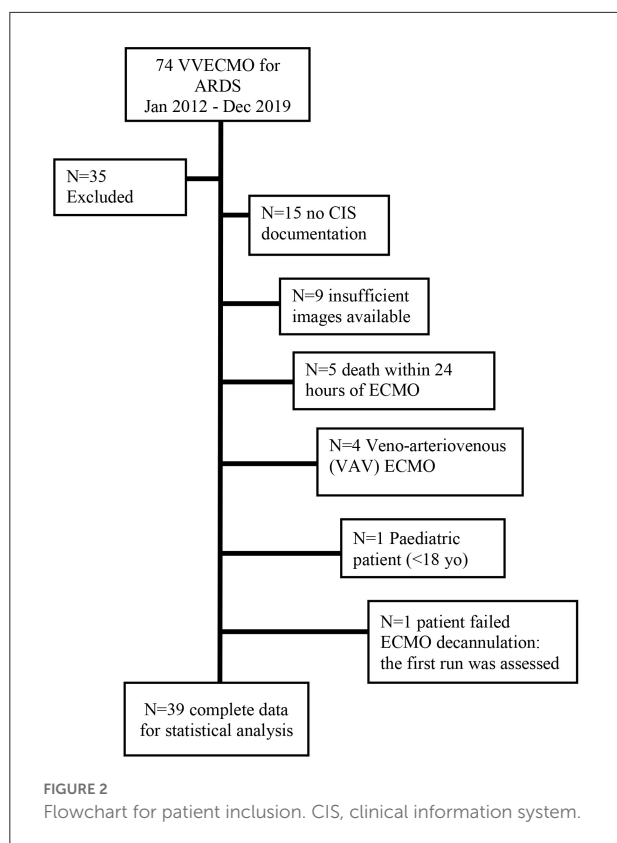
**FIGURE 1**  
Example calculation of RALE score. RALE, radiographic assessment of lung edema; RUQ, right upper quadrant; RLQ, right lower quadrant; LUQ, left upper quadrant; LLQ, left lower quadrant; CXR, chest X-ray; ECMO, extracorporeal membrane oxygenation.

A total of 74 VVECMO runs were conducted for ARDS during the study period, of which 39 individual runs were eligible for inclusion and analysis, satisfying the following criteria: adult patient, >24 h of ECMO, at least 3 digital CXR images available for analysis, and data fully accessible via the clinical information system (Figure 2). Demography and illness severity, also retrieved from the electronic record system were documented. De-identified digital chest x-rays were collected from the electronic radiology information system, for patients immediately pre, and post (Median 1.1, 2.1, and 9.6 days) (Supplementary material), initiation of ECMO. These were reviewed by two independent radiologists, blinded to the study hypothesis. The change in lung volumes before and after ECMO were quantified on digitally processed chest radiographs according to the RALE criteria (see below). At each time point, cumulative fluid balance, ventilatory (tidal volume/respiratory frequency/positive end expiratory pressure/FiO<sub>2</sub>) and ECMO parameters: extracorporeal blood flow rates, pump speed, and sweep gas flow and composition were also captured from the

clinical information system (Metavision<sup>®</sup>, iMDSoft, Israel). Ethical approval was sought from The Prince Charles Hospital Human Research Ethics Committee (EC00168), and granted with a waiver of consent (project ID 48432).

**Radiographic scoring—RALE score**

The RALE score (25), was calculated as the product of consolidation (0–4) and density scores (1–3) for each of 4 radiographic quadrants (right upper/lower and left upper/lower). The maximum score attainable was 12 per quadrant, and thus 48 in total, which would correspond to dense consolidation occupying > 75% of each radiographic quadrant. Two trained, specialist radiologists: AJW and TR, blinded to the study hypothesis (blinding to ECMO status was not possible due to the presence of radio-apparent cannula) independently scored all deidentified chest radiographs, across all time points (see Figure 1 for example).



## Interobserver agreement for RALE scores

The RALE scores of the two independent reviewers were compared. There was excellent inter-rater agreement as reflected by Cohen's Kappa values of 77.8% (pre-ECMO CXR), 75.5% (day 1 CXR), 83.8% (day 2 CXR), 82.6% (day 6+ CXR). As a result, mean RALE scores were considered acceptable for use in subsequent data analysis.

## Statistics

Summary statistics are presented as number (%) for binary and categorical data, mean (SD) for normally distributed continuous data and median (IQR) for non-normal continuous data. Normality was assessed using the Shapiro-Wilk test. Where appropriate, differences were tested using either a standard *t*-test for normally distributed data or a Wilcoxon rank-sum test for non-normal data. Categorical and binary data were analyzed using Fisher's exact test. ANOVA was used on normally distributed data to test whether the samples originated from the same distribution whereas the Kruskal-Wallis H test was used for non-normal data.

For regression analysis, the data constituted a longitudinal study (panel set) with measurements taken from several patients over time and were analyzed as such with the patients forming the panel series and the day of RALE assessment forming the time element. Regression slope ( $\beta$ ) was reported with its 95% confidence interval and *p*-value. Ultimately, model fit was documented using the  $R^2$  value. Throughout the level of significance was set at  $\alpha < 0.05$ . STATA™ (version 15.0) was used for all analyses.

## Outcome measures

The primary outcome was the change in RALE score over time, from baseline CXR (the most recent taken immediately prior to ECMO institution), and then at a median of 1.1, 2.1, and 9.6 days post initiation of ECMO therapy (see [Supplementary material](#)).

## Results

Thirty-nine adult patients (53.9% male), with a median age of 39 years (IQR 30, 57), receiving venovenous ECMO for ARDS were included ([Table 1](#)). In total, 6 patients died (15.4% mortality), and median ICU length of stay (LOS) was 548 (279,947) hours, with 428 (165,913), and 212 (113,460) ventilator and ECMO hours, respectively ([Table 1](#)). Patient demography, illness severity—as measured by APACHE II, APACHE III, and SOFA (sequential organ failure assessment) scores did not differ significantly between survivors and non-survivors, nor did ICU and hospital LOS or ventilation hours/ECMO duration. With respect to ventilation changes over time, both ventilator  $FiO_2$  and PEEP decreased from Day 2 onward and tidal volume decreased from baseline to Day 2 then increased thereafter ([Tables 2, 3](#)). Absolute RALE scores increased significantly from baseline across the first two time points ( $p = 0.018$ ), with a reduction seen thereafter to below baseline values at the final timepoint ( $p < 0.001$ ) ([Table 3](#); [Figure 3](#)). All changes reached statistical significance. Percentage changes in RALE scores compared to baseline values are described in [Table 4](#). Multivariate analysis was performed with mean RALE score as the dependent variable using two models which incorporated demographic, ventilatory and ECMO data (model 1, [Supplementary material](#)), and one which omitted ECMO parameters (model 2, [Supplementary material](#)). In both models increases in RALE score demonstrated a significant association with increased severity of illness (APACHEIII score) at baseline, and with reductions in tidal volume after the initiation of ECMO. No significant interactions between other ventilator parameters, ECMO variables and RALE score were appreciated.

TABLE 1 Patient demography.

Variable	All data	Died	Survived	<i>p</i> -value
<i>N</i>	39	6 (15.4%)	33 (84.6%)	–
<b>Demographics</b>				
Age (yrs)	39 (30, 57)	46 (36, 62)	37 (28, 57)	0.275
Male sex	21 (53.9%)	5 (83.3%)	16 (48.5%)	0.190
Weight (kg)	77 (69, 85)	80 (72, 85)	77 (69, 83)	0.613
<b>Length of stay (hrs)</b>				
ICU LoS	548 (279, 947)	785 (165, 1,008)	530 (281, 881)	0.117
Hospital LoS	930 (509, 1,164)	795 (177, 1,008)	930 (550, 1,229)	0.199
<b>Severity of illness</b>				
APA2	21 (18, 26)	23 (17, 29)	21 (18, 25)	0.668
APA3	71 (60, 85)	64 (52, 96)	73 (62, 84)	0.697
APA2 ROD	0.39 (0.29, 0.47)	0.31 (0.24, 0.41)	0.39 (0.30, 0.51)	0.348
APA3 ROD	0.26 (0.15, 0.42)	0.21 (0.08, 0.41)	0.26 (0.16, 0.42)	0.496
SOFA D1	9 (7, 11)	9 (4, 11)	9 (8, 11)	0.481
SOFA D3	8 (6, 10)	9 (4, 12)	8 (6, 9)	0.724
SOFA D5	7 (5, 9)	7 (5, 12)	7 (5, 9)	0.716
<b>Ventilation and ECMO times (hrs)</b>				
Ventilation	428 (165, 913)	785 (165, 1,006)	424 (180, 855)	0.436
ECMO	212 (113, 460)	638 (165, 885)	205 (113, 353)	0.139

APA, Acute physiology assessment; ROD, Risk of death; SOFA, Sequential organ function assessment; ECMO, Extracorporeal membrane oxygenation.

## Model 1: 71 data points $R^2$ 0.54

APACHE III:  $\beta$  value +0.19 (0.08, 0.30)  $p = 0.001$

Vt/Kg:  $\beta$  value –2.08 (–3.07, –1.10)  $p < 0.001$

## Model 2: 93 data points $R^2$ 0.41

APACHE III:  $\beta$  value +0.19 (0.09, 0.29)  $p < 0.001$

Vt/Kg:  $\beta$  value –1.53 (–2.28, –0.79)  $p < 0.001$

## Discussion

To our knowledge, the current study is the first to report changes in RALE score under the conditions of venovenous ECMO for ARDS. The key finding was a significant increase in radiological edema within 1.1 days of ECMO, independently associated with the severity of illness at admission (APACHE III score), and the magnitude reductions in tidal volumes enforced after ECMO initiation. However, RALE scores were not significantly correlated with ECMO blood flow rate or fluid balance, and while median PEEP was significantly reduced from 17 cm H<sub>2</sub>O to 10 cmH<sub>2</sub>O soon after ECMO initiation, this also failed to associate with increasing radiological opacification. This does not preclude interaction in individual patients, and the initial PEEP levels are higher than previously reported in RALE

literature, reflecting the high severity of our study population (25, 28, 29). Despite the initial worsening of RALE score, there was a significant reduction in scores at the final timepoint (median 9.6 days post cannulation) compared to baseline. This may have resulted from resolving ARDS, or pulmonary re-expansion resulting from the significant increase in delivered tidal from median 2.5 ml/Kg (1.7–4.2) immediately post ECMO initiation, to 5.6 ml/Kg (3.8–7.1) at the later time point  $p = 0.001$  (Table 3).

All 39 patients can be considered extremely high severity by virtue of requiring ECMO support; the relatively low mortality of 15.4% is suggestive of a mature ECMO service (30). Within our study RALE score did not correlate with mortality; perhaps the discriminatory potential of the score is lost in patients requiring ECMO, or as this study was primarily descriptive, it lacked power to assess these clinical outcomes.

In a prospective study by Kotok et al. reductions in RALE score of >50% by day 7, associated with reduced 90 d mortality, and with early liberation from mechanical ventilation. These findings suggest that the trajectory of radiographic opacification may be prognostically relevant (28). However, RALE score quartiles demonstrated no association with tidal volume, driving pressure or PEEP, and no patients received ECMO, rendering comparison to our cohort unwise. In the initial validation study by Warren et al. a restrictive fluid strategy was associated with a reduction in RALE score over the first 3 days (25), and each 5 point drop in the RALE score corresponded to an 8.4 mmHg

TABLE 2 Ventilatory and ECMO variables by nominal day.

Variable	Pre ECMO	Day 1	Day 2	Day 6+
<b>Ventilatory</b>				
Resp rate (bpm)	28 (20, 30)	14 (10, 19)	15 (10, 23)	23 (20, 28)
Vt (ml)	370 (300, 400)	200 (130, 300)	200 (140, 350)	400 (280, 500)
Vt (ml/kg)	4.5 (4.0, 5.3)	2.5 (1.7, 4.2)	2.5 (1.7, 4.9)	5.6 (3.8, 7.1)
FiO <sub>2</sub>	1.0 (0.75, 1.0)	0.5 (0.4, 0.5)	0.5 (0.4, 0.5)	0.45 (0.4, 0.5)
PS (cmH <sub>2</sub> O)	10 (10, 10)	10 (10, 10)	10 (10, 13)	10 (10, 14)
PEEP (cmH <sub>2</sub> O)	17 (14, 20)	10 (10, 15)	11 (10, 15)	10 (10, 12)
iNO (ppm)	20 (20, 20)	20 (18, 20)	20 (18, 20)	15 (8, 20)
<b>ECMO</b>				
Flow (lpm)	–	4.8 (3.5, 5.4)	4.7 (3.6, 5.4)	4.0 (3.3, 4.8)
RPM	–	3,340 (2,845, 3,570)	3,388 (2,873, 3,575)	3,030 (2,598, 3,356)
FGF (lpm)	–	6.25 (4.25, 8.00)	6.50 (3.25, 8.00)	0.00 (0.00, 0.75)
FiO <sub>2</sub>	–	1.00 (0.90, 1.00)	0.90 (0.75, 1.00)	0.31 (0.21, 1.00)
CFB (ml)	+297 (–348, +1,583)	+2,197 (+39, +4,020)	+2,585 (+691, +4,525)	+3,111 (–323, +5,979)

Vt, Tidal volume; FiO<sub>2</sub>, fraction of inspired oxygen; PS, Pressure support; PEEP, Positive end-expiratory pressure; iNO, inhaled nitric oxide; RPM, revolutions per minute; FGF, Fresh gas flow (Sweep); CFB, cumulative fluid balance.

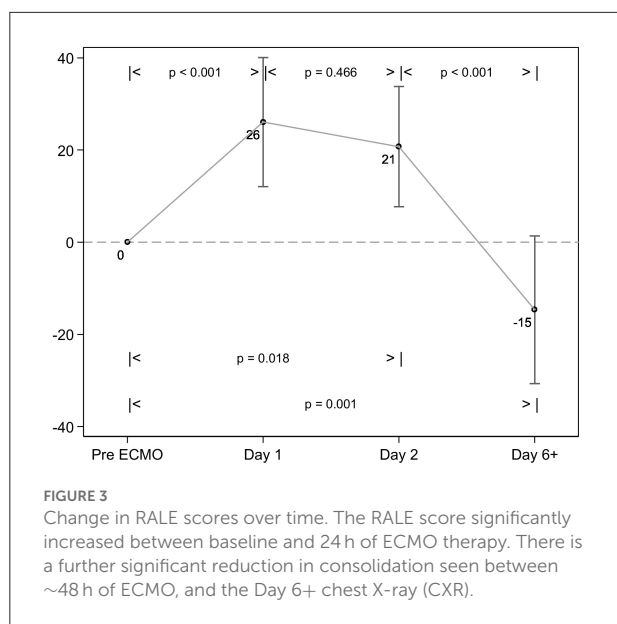
TABLE 3 RALE score and ventilation parameters over time.

Variable	Baseline (pre ECMO)	Day 1	Day 2	Day 6+	<i>p</i> -value
RALE	28 (22, 37)	35 (26, 42)	32 (22, 42)	19 (14, 26)	0.001
FiO <sub>2</sub>	1.00 (0.75, 1.00)	0.50 (0.40, 0.50)	0.50 (0.40, 0.50)	0.45 (0.40, 0.50)	0.001
Vt (ml per kg)	4.5 (4.0, 5.3)	2.5 (1.7, 4.2)	2.5 (1.7, 4.9)	5.6 (3.8, 7.1)	0.001
PEEP	17 (14, 20)	10 (10, 15)	11 (10, 15)	10 (10, 12)	0.001

RALE, Radiological assessment of lung edema; FiO<sub>2</sub>, fraction of inspired oxygen; Vt, Tidal volume; PEEP, Positive end-expiratory pressure.

increase in the PaO<sub>2</sub>; FiO<sub>2</sub> ratio (25), suggesting that the score may be used to inform fluid management in ARDS patients and monitor response to diuresis (31). Interestingly, neither cumulative fluid balance nor ECMO blood flow rate appeared to influence the degree of lung edema in our study. Without detailed assessment of individual patient cardiac output, and the corresponding “dose” of ECMO, it is unclear what this means. Previous association of fluid balance during VVECMO and survival shown by Schmidt et al. may reflect patients with greater severity of disease exhibiting higher reliance on ECMO for gas exchange, thus receiving greater fluid loading to sustain the requisite ECMO blood flow (15). ARDS is a heterogeneous entity, and dichotomous responses to ventilation (32), prone positioning and fluid management have been demonstrated (33) by etiology, biological profile, radiological morphology, and histological findings (34). While overlap exists (35), extrapulmonary ARDS associates with diffuse radiological abnormalities, and a hyperinflammatory phenotype. This is also associated with higher mortality (36), duration of mechanical ventilation, and elevated markers of sRAGE (37), a biomarker of lung epithelial injury (25, 29). From the median RALE

scores reported in our study, one might anticipate more diffuse radiological lung injury, supportive of which RALE score was significantly associated with the baseline APACHE III score; this is speculative without prospective individual patient data. In the LIVE study, Constantin et al. studied individualized ventilation, personalized to the radiological morphology of ARDS, using more liberal tidal volumes and modest PEEP in patients with focal infiltrates (38–41), and emphasizing lower tidal volume and higher PEEP and prone positioning in diffuse ARDS which has a greater potential for recruitment (38, 42–47). Radiological misclassification occurred in a fifth of patients. Where personalized ventilation was correctly aligned with phenotype, individualized care was beneficial, the converse was true with a misaligned ventilation strategy (39). In the same study RALE score values did not correlate with driving pressures, static lung compliance or PEEP (39). In other words, opacification did not alter with reduction in ventilation intensity, thus there is an apparent discrepancy with our findings which may be due to differences in severity of illness, or may suggest that the rapid change in RALE we report are attributable to the ECMO circuit and biological injury



**TABLE 4** Comparison of RALEs scores at intervals compared to baseline CXR.

Day	Mean, SE (%)	P-value	Median (%)	IQR (%)
1	26 (9)	<0.001	12	0;28
2	21 (9)	0.466	10	-8;33
6+	-15 (11)	<0.001	-30	-57;8

Results described as Mean (SD), with significance described following Wilcoxon rank sum test. The  $\Delta$ RALE Score was calculated as (Post ECMO - Pre ECMO)/Pre ECMO and expressed as a percentage.

from the non-endothelialised circuit (18, 20). Lastly, we must consider the temporal association between ARDS development and clinical outcome. Early onset ARDS may be associated with greater shock severity, larger transfusion burden, and significantly elevated sRAGE (48) suggesting pathophysiological differences from later onset disease. In a recent study, late onset ARDS (>48 h post admission) was a major risk factor for mortality (49). We did not include duration of admission prior to ECMO in our study, thus may have incorporated patients with heterogeneous onset, and varying durations of mechanical ventilation to ECMO. The RALE score has consistently demonstrated excellent interobserver reliability, and so may offer reliable means of diagnosing ARDS (50) and tracking radiological progression. While CT imaging may better inform the proportion of recruitable lung (42, 45, 47, 51), it is logistically less feasible to perform at regular intervals in critically ill patients undergoing ECMO, particularly in the context of a global pandemic.

## Limitations

The current study is limited by reporting a small, retrospective cohort from a single center. ARDS sub-phenotype for individual patients was not reported, thus important interactions between PEEP and RALE score by morphological subtype may have been obscured. Nor was this study powered to assess interaction between the observed radiological changes during ECMO and clinical outcomes. While tidal volume demonstrated an important interaction with RALE score, we cannot infer whether this was mediated by the anticipated driving pressure reductions. Unfortunately, the data required to calculate driving pressures is not included in our local data clinical information system. Fluid management and ventilator strategies on ECMO were not protocolised, and the timing of chest radiographs was not prospectively mandated. During the 7-year span of the study there is likely to have been evolution in oxygen saturation targets, ventilatory management, and transfusion thresholds during ECMO support (3, 6, 52), all of which may influence the degree of radiological opacification. While the interobserver agreement was considered sufficient such that mean RALE scores could be relied upon; higher degrees of correlation have been seen in previous studies (25, 28, 29, 53), perhaps reflecting more formalized radiologist training. Prospective study should attempt to clarify whether the increase in RALE score post ECMO is a phenomenon attributable to the “dose” of ECMO, or due to the aggressiveness of lung protection. Predictive enrichment (54–56) could incorporate radiological morphology and measurement of plasma biomarkers to better address clinical heterogeneity through identification of sub-phenotypes. There is a need to prospectively evaluate various strategies to minimize harm during ECMO, whilst protecting the integrity of native lung function.

## Conclusion

Optimal integration of the membrane and native lungs is elusive. The initiation of ECMO was associated with rapid, and significant increases in radiological consolidation, which correlated with the reductions in delivered tidal volume enforced under ECMO. There is need for external validation of the RALE score in ECMO cohorts to determine its utility in informing clinical management.

## Data availability statement

The raw data supporting the conclusions of this article will be made available by the authors, without undue reservation.

## Ethics statement

The studies involving human participants were reviewed and approved by The Prince Charles Hospital Human Research Ethics Committee (EC00168), and granted with a waiver of consent (project ID 48432). Written informed consent for participation was not required for this study in accordance with the national legislation and the institutional requirements.

## Author contributions

KS and FY conceived the study. FY performed the data collection and ethics application. CA performed all statistical analyses. EW and FY produced the initial draft of the manuscript. EW developed the manuscript and led the revisions process, to which all authors contributed. The final manuscript was approved by all authors.

## Acknowledgments

The authors would like to thank Drs. Allan John Wesley (AJW), and Taryn Reddy (TR) for performance of the RALE score on the chest radiographs included in this study.

## References

- Bellani G, Laffey JG, Pham T, Fan E, Brochard L, Esteban A, et al. Epidemiology, patterns of care, and mortality for patients with acute respiratory distress syndrome in intensive care units in 50 countries. *JAMA*. (2016) 315:788–800. doi: 10.1001/jama.2016.0291
- Munshi L, Walkey A, Goligher E, Pham T, Uleryk EM, Fan E. Venovenous extracorporeal membrane oxygenation for acute respiratory distress syndrome: a systematic review and meta-analysis. *Lancet Respir Med*. (2019) 7:163–72. doi: 10.1016/S2213-2600(18)30452-1
- Combes A, Hajage D, Capellier G, Demoule A, Lavoue S, Guerville C, et al. Extracorporeal membrane oxygenation for severe acute respiratory distress syndrome. *N Engl J Med*. (2018) 378:1965–75. doi: 10.1056/NEJMoa1800385
- Schmidt M, Pham T, Arcadipane A, Agerstrand C, Ohshimo S, Pellegrino V, et al. Mechanical ventilation management during extracorporeal membrane oxygenation for acute respiratory distress syndrome. An international multicenter prospective cohort. *Am J Respir Crit Care Med*. (2019) 200:1002–12. doi: 10.1164/rccm.201806-1094OC
- Abrams D, Schmidt M, Pham T, Beitler JR, Fan E, Goligher EC, et al. Mechanical ventilation for ARDS during extracorporeal life support: research and practice. *Am J Respir Crit Care Med*. (2019) 201:514–25. doi: 10.1164/rccm.201907-1283CI
- Serpa Neto A, Schmidt M, Azevedo LC, Bein T, Brochard L, Beutler G, et al. Associations between ventilator settings during extracorporeal membrane oxygenation for refractory hypoxemia and outcome in patients with acute respiratory distress syndrome: a pooled individual patient data analysis:

## Conflict of interest

Author KS is a member of the ECMONet scientific committee, the Asia-Pacific ELSO educational committee, and Australia and New Zealand's Intensive Care Society COVID-19 working group; he is also the lead of an ECMOed research working group and KS acknowledges research support from Metro North Hospital and Health Service.

The remaining authors declare that the research was conducted in the absence of any commercial or financial relationships that could be construed as a potential conflict of interest.

## Publisher's note

All claims expressed in this article are solely those of the authors and do not necessarily represent those of their affiliated organizations, or those of the publisher, the editors and the reviewers. Any product that may be evaluated in this article, or claim that may be made by its manufacturer, is not guaranteed or endorsed by the publisher.

## Supplementary material

The Supplementary Material for this article can be found online at: <https://www.frontiersin.org/articles/10.3389/fmed.2022.1005192/full#supplementary-material>

- mechanical ventilation during ECMO. *Intensive Care Med*. (2016) 42:1672–84. doi: 10.1007/s00134-016-4507-0
- Patroniti N, Bonatti G, Senussi T, Robba C. Mechanical ventilation and respiratory monitoring during extracorporeal membrane oxygenation for respiratory support. *Ann Transl Med*. (2018) 6:386. doi: 10.21037/atm.2018.10.11
  - Marhong JD, Telesnicki T, Munshi L, Del Sorbo L, Detsky M, Fan E. Mechanical ventilation during extracorporeal membrane oxygenation. An international survey. *Ann Am Thorac Soc*. (2014) 11:956–61. doi: 10.1513/AnnalsATS.201403-100BC
  - Quintel M, Busana M, Gattinoni L. Breathing and ventilation during extracorporeal membrane oxygenation: how to find the balance between rest and load. *Am J Respir Crit Care Med*. (2019) 200:954–6. doi: 10.1164/rccm.201906-1164ED
  - Rozencwajg S, Guihot A, Franchineau G, Lescroart M, Brechot N, Hekimian G, et al. Ultra-protective ventilation reduces biotrauma in patients on venovenous extracorporeal membrane oxygenation for severe acute respiratory distress syndrome. *Crit Care Med*. (2019) 47:1505–12. doi: 10.1097/CCM.0000000000003894
  - Araos J, Alegria L, Garcia P, Cruces P, Soto D, Erranz B, et al. Near-apneic ventilation decreases lung injury and fibroproliferation in an acute respiratory distress syndrome model with extracorporeal membrane oxygenation. *Am J Respir Crit Care Med*. (2019) 199:603–12. doi: 10.1164/rccm.201805-0869OC
  - Shekar K, Schmidt M. Integrating mechanical ventilation and extracorporeal membrane oxygenation in severe acute respiratory distress syndrome. *Am J Respir Crit Care Med*. (2019) 200:265–6. doi: 10.1164/rccm.201903-0594LE

13. Schmidt M, Tachon G, Devilliers C, Muller G, Hekimian G, Brecht N, et al. Blood oxygenation and decarboxylation determinants during venovenous ECMO for respiratory failure in adults. *Intensive Care Med.* (2013) 39:838–46. doi: 10.1007/s00134-012-2785-8
14. Mallory PP, Selewski DT, Askenazi DJ, Cooper DS, Fleming GM, Paden ML, et al. Acute kidney injury, fluid overload, and outcomes in children supported with extracorporeal membrane oxygenation for a respiratory indication. *ASAIO J.* (2020) 66:319–26. doi: 10.1097/MAT.0000000000001000
15. Schmidt M, Bailey M, Kelly J, Hodgson C, Cooper DJ, Scheinkestel C, et al. Impact of fluid balance on outcome of adult patients treated with extracorporeal membrane oxygenation. *Intensive Care Med.* (2014) 40:1256–66. doi: 10.1007/s00134-014-3360-2
16. Jamadar DA, Kazerooni EA, Cascade PN, Fazzalari FL, Vydareny KH, Bartlett RH. Extracorporeal membrane oxygenation in adults: radiographic findings and correlation of lung opacity with patient mortality. *Radiology.* (1996) 198:693–8. doi: 10.1148/radiology.198.3.8628856
17. Schlesinger AE, Cornish JD, Null DM. Dense pulmonary opacification in neonates treated with extracorporeal membrane oxygenation. *Pediatr Radiol.* (1986) 16:448–51. doi: 10.1007/BF02387954
18. Passmore MR, Ki KK, Chan CHH, Lee T, Bouquet M, Wood ES, et al. The effect of hyperoxia on inflammation and platelet responses in an ex vivo extracorporeal membrane oxygenation circuit. *Artif Organs.* (2020) 44:1276–85. doi: 10.1111/aor.13771
19. Hayes RA, Shekar K, Fraser JF. Is hyperoxaemia helping or hurting patients during extracorporeal membrane oxygenation? Review of a complex problem. *Perfusion.* (2013) 28:184–93. doi: 10.1177/0267659112473172
20. Millar JE, Fanning JP, McDonald CI, McAuley DF, Fraser JF. The inflammatory response to extracorporeal membrane oxygenation (ECMO): a review of the pathophysiology. *Crit Care.* (2016) 20:387. doi: 10.1186/s13054-016-1570-4
21. Force ADT, Ranieri VM, Rubenfeld GD, Thompson BT, Ferguson ND, Caldwell E, et al. Acute respiratory distress syndrome: the Berlin Definition. *JAMA.* (2012) 307:2526–33. doi: 10.1001/jama.2012.5669
22. Rubenfeld GD, Caldwell E, Granton J, Hudson LD, Matthay MA. Interobserver variability in applying a radiographic definition for ARDS. *Chest.* (1999) 116:1347–53. doi: 10.1378/chest.116.5.1347
23. Beards SC, Jackson A, Hunt L, Wood A, Frerk CM, Brear G, et al. Interobserver variation in the chest radiograph component of the lung injury score. *Anaesthesia.* (1995) 50:928–32. doi: 10.1111/j.1365-2044.1995.tb05921.x
24. Sjoding MW, Hofer TP, Co I, McSparron JI, Iwashyna TJ. Differences between patients in whom physicians agree and disagree about the diagnosis of acute respiratory distress syndrome. *Ann Am Thorac Soc.* (2019) 16:258–64. doi: 10.1513/AnnalsATS.201806-434OC
25. Warren MA, Zhao Z, Koyama T, Bastarache JA, Shaver CM, Semler MW, et al. Severity scoring of lung edema on the chest radiograph is associated with clinical outcomes in ARDS. *Thorax.* (2018) 73:840–6. doi: 10.1136/thoraxjnl-2017-211280
26. Ebrahimi S, Homayounieh F, Rockenbach M, Putha P, Raj T, Dayan I, et al. Artificial intelligence matches subjective severity assessment of pneumonia for prediction of patient outcome and need for mechanical ventilation: a cohort study. *Sci Rep.* (2021) 11:858. doi: 10.1038/s41598-020-79470-0
27. Valk CMA, Zimatore C, Mazzinari G, Pierrakos C, Sivakorn C, Dechsanga J, et al. The prognostic capacity of the radiographic assessment for lung edema score in patients with COVID-19 acute respiratory distress syndrome—an international multicenter observational study. *Front Med.* (2021) 8:772056. doi: 10.3389/fmed.2021.772056
28. Kotok D, Yang L, Evankovich JW, Bain W, Dunlap DG, Shah F, et al. The evolution of radiographic edema in ARDS and its association with clinical outcomes: a prospective cohort study in adult patients. *J Crit Care.* (2020) 56:222–8. doi: 10.1016/j.jcrc.2020.01.012
29. Jabaudon M, Audard J, Pereira B, Jaber S, Lefrant JY, Blondonnet R, et al. Early changes over time in the radiographic assessment of lung edema score are associated with survival in ARDS. *Chest.* (2020) 158:2394–403. doi: 10.1016/j.chest.2020.06.070
30. Barbaro RP, Odetola FO, Kidwell KM, Paden ML, Bartlett RH, Davis MM, et al. Association of hospital-level volume of extracorporeal membrane oxygenation cases and mortality. Analysis of the extracorporeal life support organization registry. *Am J Respir Crit Care Med.* (2015) 191:894–901. doi: 10.1164/rccm.201409-1634OC
31. National Heart L, Blood Institute Acute Respiratory Distress Syndrome Clinical Trials N, Wiedemann HP, Wheeler AP, Bernard GR, Thompson BT, et al. Comparison of two fluid-management strategies in acute lung injury. *N Engl J Med.* (2006) 354:2564–75. doi: 10.1056/NEJMoa062200
32. Jabaudon M, Blondonnet R, Audard J, Fournet M, Godet T, Sapin V, et al. Recent directions in personalised acute respiratory distress syndrome medicine. *Anaesth Crit Care Pain Med.* (2018) 37:251–8. doi: 10.1016/j.accpm.2017.08.006
33. Famous KR, Delucchi K, Ware LB, Kangelaris KN, Liu KD, Thompson BT, et al. Acute respiratory distress syndrome subphenotypes respond differently to randomized fluid management strategy. *Am J Respir Crit Care Med.* (2017) 195:331–8. doi: 10.1164/rccm.201603-0645OC
34. Shaver CM, Bastarache JA. Clinical and biological heterogeneity in acute respiratory distress syndrome: direct versus indirect lung injury. *Clin Chest Med.* (2014) 35:639–53. doi: 10.1016/j.ccm.2014.08.004
35. Brun-Buisson C, Minelli C, Bertolini G, Brazzi L, Pimentel J, Lewandowski K, et al. Epidemiology and outcome of acute lung injury in European intensive care units. Results from the ALIVE study. *Intensive Care Med.* (2004) 30:51–61. doi: 10.1007/s00134-003-2022-6
36. Bos LD, Schouten LR, van Vught LA, Wiewel MA, Ong DSY, Cremer O, et al. Identification and validation of distinct biological phenotypes in patients with acute respiratory distress syndrome by cluster analysis. *Thorax.* (2017) 72:876–83. doi: 10.1136/thoraxjnl-2016-209719
37. Mrozek S, Jabaudon M, Jaber S, Paugam-Burtz C, Lefrant JY, Rouby JJ, et al. Elevated plasma levels of sRAGE are associated with nonfocal CT-based lung imaging in patients with ARDS: a prospective multicenter study. *Chest.* (2016) 150:998–1007. doi: 10.1016/j.chest.2016.03.016
38. Puybasset L, Gusman P, Muller JC, Cluzel P, Coriat P, Rouby JJ. Regional distribution of gas and tissue in acute respiratory distress syndrome. III. Consequences for the effects of positive end-expiratory pressure. CT Scan ARDS Study Group. Adult Respiratory Distress Syndrome. *Intensive Care Med.* (2000) 26:1215–27. doi: 10.1007/s001340051340
39. Constantin JM, Jabaudon M, Lefrant JY, Jaber S, Quenot JP, Langeron O, et al. Personalised mechanical ventilation tailored to lung morphology versus low positive end-expiratory pressure for patients with acute respiratory distress syndrome in France (the LIVE study): a multicentre, single-blind, randomised controlled trial. *Lancet Respir Med.* (2019) 7:870–80. doi: 10.1016/S2213-2600(19)30138-9
40. Jabaudon M, Blondonnet R, Lutz J, Roszyk L, Bouvier D, Guerin R, et al. Net alveolar fluid clearance is associated with lung morphology phenotypes in acute respiratory distress syndrome. *Anaesth Crit Care Pain Med.* (2016) 35:81–6. doi: 10.1016/j.accpm.2015.11.006
41. Sinha P, Delucchi KL, Thompson BT, McAuley DF, Matthay MA, Calfee CS, et al. Latent class analysis of ARDS subphenotypes: a secondary analysis of the statins for acutely injured lungs from sepsis (SAILS) study. *Intensive Care Med.* (2018) 44:1859–69. doi: 10.1007/s00134-018-5378-3
42. Cressoni M, Cadringer P, Chiurazzi C, Amini M, Gallazzi E, Marino A, et al. Lung inhomogeneity in patients with acute respiratory distress syndrome. *Am J Respir Crit Care Med.* (2014) 189:149–58. doi: 10.1164/rccm.201308-1567OC
43. Gattinoni L. Ultra-protective ventilation and hypoxemia. *Crit Care.* (2016) 20:130. doi: 10.1186/s13054-016-1310-9
44. Gattinoni L, Marini JJ, Pesenti A, Quintel M, Mancebo J, Brochard L. The “baby lung” became an adult. *Intensive Care Med.* (2016) 42:663–73. doi: 10.1007/s00134-015-4200-8
45. Puybasset L, Cluzel P, Chao N, Slutsky AS, Coriat P, Rouby JJ. A computed tomography scan assessment of regional lung volume in acute lung injury. The CT Scan ARDS Study Group. *Am J Respir Crit Care Med.* (1998) 158 (5 Pt 1):1644–55. doi: 10.1164/ajrccm.158.5.9802003
46. Gattinoni L, Caironi P, Cressoni M, Chiumello D, Ranieri VM, Quintel M, et al. Lung recruitment in patients with the acute respiratory distress syndrome. *N Engl J Med.* (2006) 354:1775–86. doi: 10.1056/NEJMoa052052
47. Puybasset L, Cluzel P, Gusman P, Grenier P, Preteux F, Rouby JJ. Regional distribution of gas and tissue in acute respiratory distress syndrome. I. Consequences for lung morphology. CT Scan ARDS Study Group. *Intensive Care Med.* (2000) 26:857–69. doi: 10.1007/s001340051274
48. Reilly JP, Bellamy S, Shashaty MG, Gallop R, Meyer NJ, Lanken PN, et al. Heterogeneous phenotypes of acute respiratory distress syndrome after major trauma. *Ann Am Thorac Soc.* (2014) 11:728–36. doi: 10.1513/AnnalsATS.201308-280OC
49. Liao KM, Chen CW, Hsueh TR, Lin WC. Timing of acute respiratory distress syndrome onset is related to patient outcome. *J Formos Med Assoc.* (2009) 108:694–703. doi: 10.1016/S0929-6646(09)60392-2
50. Bellani G, Laffey JG, Pham T, Fan E, Investigators LS, the ETG. The LUNG SAFE study: a presentation of the prevalence of ARDS according to the Berlin Definition! *Crit Care.* (2016) 20:268. doi: 10.1186/s13054-016-1443-x
51. Cressoni M, Chiumello D, Chiurazzi C, Brioni M, Algieri I, Gotti M, et al. Lung inhomogeneities, inflation and [18F]2-fluoro-2-deoxy-D-glucose

uptake rate in acute respiratory distress syndrome. *Eur Respir J.* (2016) 47:233–42. doi: 10.1183/13993003.00885-2015

52. Ramanathan K, MacLaren G, Combes A, Brodie D, Shekar K. Blood transfusion strategies and ECMO during the COVID-19 pandemic - Authors' reply. *Lancet Respir Med.* (2020) 8:e41. doi: 10.1016/S2213-2600(20)30174-0

53. Padhye A, Hsu S, Ordonez A, Gotur D. Rale score as a prognostication tool for patients with COVID-19 on ECMO. *Chest.* (2021) 160:A1131. doi: 10.1016/j.chest.2021.07.1036

54. Matthay MA, Arabi YM, Siegel ER, Ware LB, Bos LDJ, Sinha P, et al. Phenotypes and personalized medicine in the acute respiratory distress syndrome. *Intensive Care Med.* (2020) 46:2136–52. doi: 10.1007/s00134-020-06296-9

55. Beitler JR. Lung protection in acute respiratory distress syndrome: what should we target? *Curr Opin Crit Care.* (2019) 26:26–34. doi: 10.1097/MCC.0000000000000692

56. Goligher EC, Amato MBP, Slutsky AS. Applying precision medicine to trial design using physiology. Extracorporeal CO<sub>2</sub> removal for acute respiratory distress syndrome. *Am J Respir Crit Care Med.* (2017) 196:558–68. doi: 10.1164/rccm.201701-0248CP