

**Leptospirosis: An important zoonosis acquired through work, play and travel**

**Author**

Lau, Colleen L, Townell, Nicola, Stephenson, Eloise, van den Berg, Debra, Craig, Scott B

**Published**

2018

**Journal Title**

Australian Journal of General Practice

**Version**

Version of Record (VoR)

**Rights statement**

Colleen L Lau et al., Leptospirosis: An important zoonosis acquired through work, play and travel. Australian Journal of General Practice 2018, 47 (3), pp. 105-110. Available at <https://www1.racgp.org.au/ajgp/2018/march/leptospirosis>

**Downloaded from**

<http://hdl.handle.net/10072/387594>

**Link to published version**

<https://www1.racgp.org.au/ajgp/2018/march/leptospirosis>

**Griffith Research Online**

<https://research-repository.griffith.edu.au>



**Colleen L Lau**, Nicola Townell,  
Eloise Stephenson, Debra van den Berg,  
Scott B Craig

### Background

Leptospirosis is one of the most common zoonotic diseases worldwide. Infection occurs through contact with infected animals, or soil or water that has been contaminated by the urine of infected animals. Risk factors include occupational and recreational exposures, contact with floodwaters, and travel to areas with a high risk of leptospirosis, particularly tropical, developing countries. With climate change, flood-related outbreaks are becoming more common.

### Objectives

This article aims to improve awareness of leptospirosis, and provide an update for general practitioners on its epidemiology, risk factors, clinical presentation, laboratory diagnosis, management and prevention.

### Discussion

Leptospirosis is sometimes misdiagnosed because clinical presentation can be non-specific and overlap with many other causes of acute febrile illnesses. In patients with risk factors for leptospirosis, a high index of clinical suspicion is important to ensure early diagnosis and treatment. Delays in treatment could increase the risk of severe complications, including pulmonary haemorrhage, acute renal failure and acute liver failure.

# Leptospirosis

*An important zoonosis acquired through work, play and travel*

**LEPTOSPIROSIS IS CAUSED** by bacteria of the genus *Leptospira*, which has >250 known pathogenic serovars.<sup>1</sup> *Leptospira* colonise the kidneys of infected mammals and are released through urine into the environment, where they can survive for weeks. Humans become infected through direct contact with infected animals, including rodents, wildlife, livestock, and pets, or contact with soil or water contaminated by the urine of infected animals. Risk factors for infection depend on interactions between humans, animals and the environment (Figure 1).

Globally, leptospirosis is an emerging infectious disease with a rising incidence, increasing frequency and severity of outbreaks, and evolving climatic, sociodemographic and environmental drivers of transmission.<sup>2</sup> Recently, unprecedented outbreaks have occurred as a result of the combined forces of climate change, flooding, population growth, urbanisation (typically associated with poverty and slums in developing countries), and agricultural intensification to meet the increasing demands for food.<sup>3</sup>

### Epidemiology and risk factors

Leptospirosis is responsible for about one million severe cases and 60,000 deaths per year worldwide.<sup>4</sup> The incidence of leptospirosis is highest in tropical and subtropical areas, and disease burden is particularly high in Oceania.<sup>5</sup> Summary statistics of cases reported to the National Notifiable Disease Surveillance System (NNDSS) in Australia are shown in Figure 2. The average notification rate from 2007 to 2016 was 0.55 cases per 100,000

population per year,<sup>6</sup> ranging from 1.85 cases per 100,000 population per year in Queensland, to 0.94 cases per 100,000 population per year in the Northern Territory, and <0.3 cases per 100,000 population per year in the other states and territories. Queensland had the greatest infection burden, particularly in the Cairns and Hinterland region,<sup>7</sup> and the spike in cases in 2011 was attributed to an outbreak after unprecedented flooding across Queensland.<sup>8,9</sup> Most cases occurred in the summer months, and in young and middle-aged males.<sup>6</sup>

In Australia, occupational exposure is the predominant source of infection, particularly in livestock and dairy farmers, abattoir and meat workers, and banana workers (through exposure to rodents).<sup>10</sup> Infection through recreational exposure is also common, mostly from white water rafting, kayaking, ecotourism and other outdoor activities.<sup>11</sup> International travel, particularly to tropical, developing countries, is an important source of occupational and recreational exposure.<sup>11</sup>

In tropical, developing countries, including Australia's neighbours in the Asia Pacific region, environmental and climatic drivers are important. Tropical climates provide ideal conditions for *Leptospira* to survive, and transmission is exacerbated during high rainfall and flooding, when bacteria are widely disseminated.<sup>3</sup> Exposure is even more intense in places with poor sanitation, inadequate drainage and abundance of rodents (eg urban slums). Many post-flooding outbreaks have therefore occurred in densely populated developing countries, including Brazil,<sup>12</sup> India<sup>13</sup> and the Philippines.<sup>14</sup>

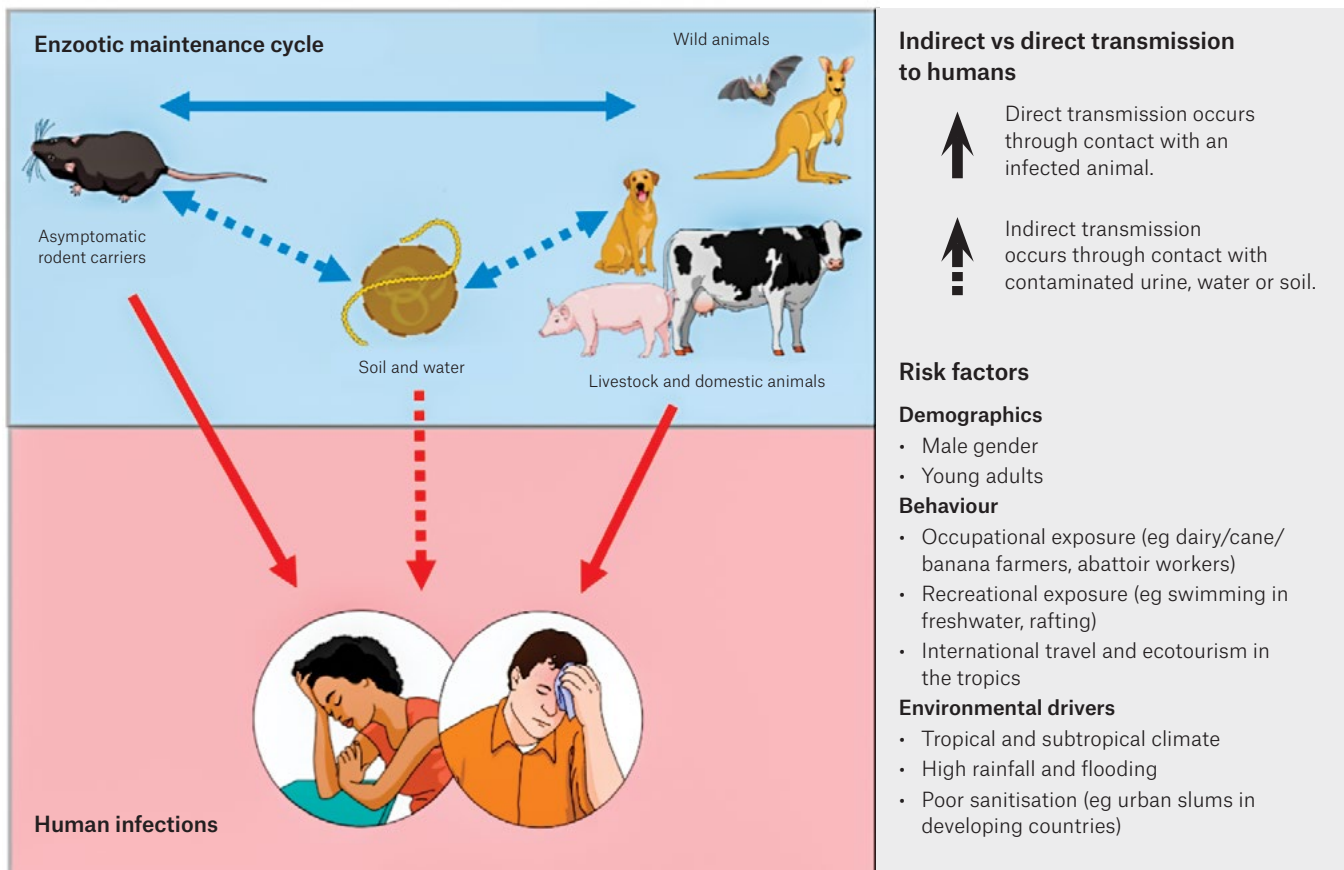


Figure 1. Transmission pathways and risk factors for leptospirosis

## Pathophysiology, clinical features and complications

Clinical presentations of leptospirosis range from mild, non-specific febrile illnesses to life-threatening complications. After an incubation period of two to 30 days (usually five to 14 days), leptospirosis manifests as a biphasic illness with an acute/bacteraemic phase (seven to 10 days from symptom onset), characterised by sudden onset of fever, myalgia and headache.<sup>2</sup> Calf tenderness and conjunctival suffusion are characteristic but not always present. Other non-specific symptoms include anorexia, nausea, vomiting, abdominal pain, dizziness, lethargy, arthralgia, eye pain, photophobia and rashes. This is followed by a late/immune phase (>7 days from symptom onset), when immunologically mediated organ

damage occurs, and severe complications include acute renal failure, pulmonary haemorrhage, myocarditis, arrhythmias, shock, liver failure, coagulopathy and neurological complications.<sup>2</sup> Weil's disease is the classic triad of jaundice, renal failure and haemorrhage, but these manifestations do not always occur together. Aseptic meningitis, encephalitis, convulsions, Guillain-Barré syndrome, transverse myelitis and other neurological syndromes have also been reported.<sup>2</sup> Leptospirosis can also present with acute or chronic optic manifestations, including subconjunctival and retinal haemorrhages, optic neuritis and chronic uveitis.

## Differential diagnosis

Leptospirosis can be difficult to clinically distinguish from other causes

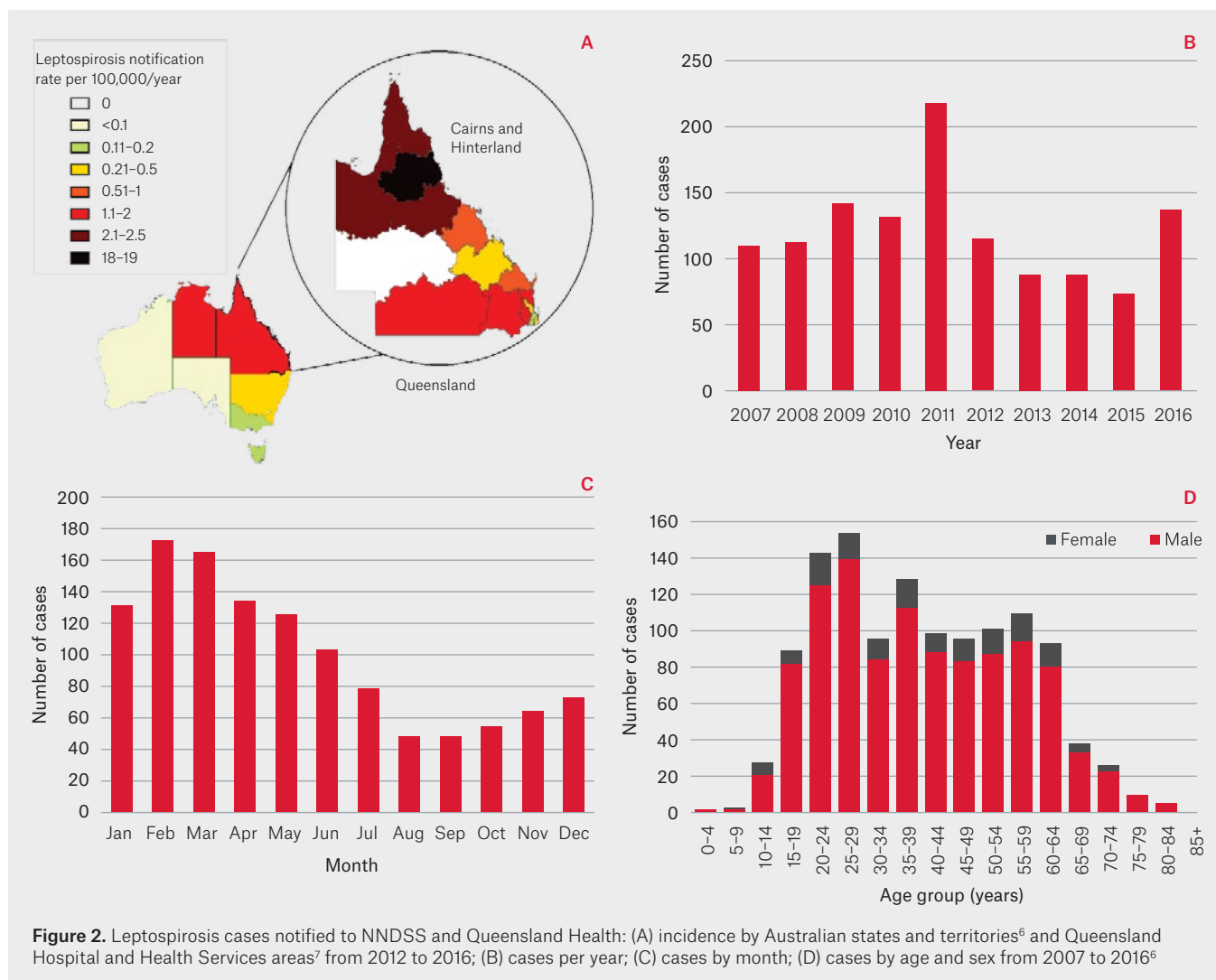
## Box 1. Case definition of leptospirosis<sup>17</sup>

A 'confirmed case' requires definitive laboratory evidence of leptospirosis infection by one of the following:

- Isolation of pathogenic *Leptospira* species
- A fourfold or greater rise in *Leptospira* MAT titre between acute- and convalescent-phase sera obtained at least two weeks apart, and preferably conducted at the same laboratory
- A single *Leptospira* MAT titre  $\geq 400$ , supported by a positive ELISA IgM result.

*Note. A positive IgM ELISA or positive PCR alone are considered probable rather than confirmatory according to the National Notifiable Diseases Surveillance System definitions*

*ELISA, enzyme-linked immunosorbent assay; MAT, microscopic agglutination test; PCR, polymerase chain reaction*



**Figure 2.** Leptospirosis cases notified to NNDSS and Queensland Health: (A) incidence by Australian states and territories<sup>6</sup> and Queensland Hospital and Health Services areas<sup>7</sup> from 2012 to 2016; (B) cases per year; (C) cases by month; (D) cases by age and sex from 2007 to 2016<sup>6</sup>

of acute febrile illnesses or their severe complications; diagnosis may therefore be missed or delayed. A detailed history is important for identifying patients who have undertaken activities that place them at risk of exposure to infection. A travel history is also important for delineating possible diagnoses.

Differential diagnoses of leptospirosis include influenza, pneumonia, arboviral infections (ie dengue, chikungunya, Zika virus, Ross River virus), malaria, typhoid, rickettsia, Q fever, acute viral hepatitis, pyelonephritis and meningitis. Haemorrhagic complications can also mimic meningococcaemia or severe dengue.<sup>15</sup> Co-infections have also been reported,<sup>16</sup> particularly in post-flooding

settings, when outbreaks of multiple diseases (eg leptospirosis, dengue, typhoid) can occur at the same time.

### Laboratory diagnosis

Multiple diagnostic tests are available, and it is important to order the appropriate test(s) and understand their interpretation for each phase of the illness. Tests that detect the presence of bacteria (eg polymerase chain reaction [PCR], culture) will only yield positive results in the acute/bacteraemic phase. Tests that detect antibodies will produce positive results later, from days six to eight from illness onset for immunoglobulin M (IgM) enzyme-linked immunosorbent assay

(ELISA), and from day 10 to 12 from illness onset for microscopic agglutination test (MAT). The NNDSS definition of a confirmed case (Box 1) is based on culture or MAT, the gold standard tests in the acute/bacteraemic and late/immune phases respectively.<sup>17</sup> Positive PCR alone or IgM ELISA alone are considered probable rather than confirmatory, but are nevertheless valuable for guiding clinical diagnosis in patients who present with suspected leptospirosis.

In the acute/bacteraemic phase, blood should be collected for PCR (in a serum-separating tube) and IgM ELISA before commencing antibiotics. During the early acute/bacteraemic phase, IgM ELISA has lower sensitivity, compared with PCR,<sup>18</sup>

but the results are helpful in determining the phase of illness. Blood cultures should be taken if the specific culture medium is available (Ellinghausen–McCullough–Johnson–Harris medium).<sup>19</sup> However, it is important to check the availability of the culture medium with the local pathology laboratory, and whether they are able to conduct cultures. Cultures are examined for six weeks by dark-field microscopy, so this method is generally not useful for informing immediate clinical management.

During the late/immune phase, when antibodies are present, both IgM ELISA and MAT tests should be requested. Reactive IgM ELISAs are sent to reference laboratories for confirmation by MAT. A convalescent sample should be collected 14 days later to confirm rising MAT titres, particularly if the initial IgM ELISA was reactive but MAT was found to be non-reactive. MAT combines diluted serum with a panel of serovars from different serogroups.<sup>1,19</sup> The World Health Organization’s (WHO’s) Leptospirosis Reference Laboratory in Brisbane, Queensland,<sup>20</sup> uses a routine panel of 22 serovars, which includes a representative from each major serogroup.

Any history of overseas travel by the patient should be communicated to the laboratory so that appropriate serovars are included in the panel.

Depending on the clinical presentation, other relevant investigations should include full blood count, biochemistry, arterial blood gases, electrocardiography (ECG), chest X-ray and lumbar puncture. The most common laboratory findings in a patient with leptospirosis are neutrophilia and mildly abnormal liver function tests. Other possible investigation findings, depending on severity and complications, are summarised in Table 1.

### Clinical management

If leptospirosis is suspected on the basis of the clinical presentation and risk factors for recent exposure, empirical antibiotics should be given early and continued for at least seven days. For mild disease, doxycycline (100 mg twice daily) is the preferred antibiotic for empirical treatment because it is also effective against rickettsial infections, which can have a similar

presentation.<sup>21</sup> Other options include amoxicillin and erythromycin. Intravenous benzylpenicillin 1.2 g six-hourly or ceftriaxone 1 g daily should be used for severe infection.<sup>21</sup> Jarish–Herxheimer reactions can occur one to 48 hours after starting antibiotics.<sup>15,22</sup> Common features include sudden onset of shivers or rigors, fever and hypotension. Jarish–Herxheimer is caused by an acute inflammatory response mediated by the release of large amounts of cytokines in response to the sudden and rapid death of *Leptospira*.

Patients with suspected leptospirosis who present with life-threatening complications and/or evidence of end-organ failure (eg massive pulmonary haemorrhage, acute respiratory distress syndrome, renal failure, shock) should be referred to a hospital because of the risk of further deterioration.

Depending on the complications, management might include intravenous fluids and inotropes, ventilation, haemodialysis, and treatment of arrhythmias and coagulopathies. Currently, corticosteroids are not recommended because there is conflicting evidence

**Table 1. Possible investigation findings in leptospirosis, depending on severity and complications**

Investigations	Findings
Full blood count	Leucocytosis, neutrophilia with left shift, lymphopenia, normochromic anaemia, thrombocytopenia
Urea, electrolytes, creatinine	Raised urea and creatinine if renal impairment. Potassium is usually normal or low, high potassium is associated with poor outcomes (an indicator of impaired renal function, and might lead to arrhythmias). Low sodium
Liver function tests	Raised bilirubin (mainly direct), may take time to resolve. Normal or raised liver enzymes. Aspartate aminotransferase and alanine aminotransferase are typically three to five times above normal, but could be much higher in cases with fulminant hepatic failure
Urinalysis	Proteinuria, microscopic haematuria, pyuria, granular casts
Creatine phosphokinase	Raised in patients with myalgia
Coagulation	Prothrombin time, partial thromboplastin time and international normalised ratio may be raised because of impaired liver function
Arterial blood gases	Low partial pressure of O <sub>2</sub> (PaO <sub>2</sub> ), arterial O <sub>2</sub> saturation (SaO <sub>2</sub> ), ratio of partial pressure arterial oxygen and fraction of inspired oxygen (PaO <sub>2</sub> /FiO <sub>2</sub> ) ratio, metabolic acidosis (ie low pH, low HCO <sub>3</sub> )
Electrocardiograph	Atrial fibrillation, supraventricular or ventricular extrasystoles, atrioventricular block, other arrhythmias
Chest X-ray	Variable findings, including alveolar infiltrates, nodular densities and consolidation. Changes could be diffuse or lobar, unilateral or bilateral. Findings could represent a range of pathology, including alveolar haemorrhage, acute respiratory distress syndrome, pulmonary oedema
Lumbar puncture	Neutrophilic or lymphocytic pleocytosis, mild elevations in protein, normal glucose

about their effectiveness, and their use has been associated with increased risk of nosocomial infections in patients with severe leptospirosis.<sup>23</sup>

### CASE

A mining engineer, 38 years of age, presented to a general practitioner with a one-week history of fevers, rigors, nausea, vomiting, headache, myalgia and malaise. He had returned two weeks previously from a one-month work trip to Papua New Guinea (PNG), where he walked in jungles and creeks, sustained cuts and lacerations, and received multiple insect bites. He drank filtered water, ate cooked or processed food, and denied any recent sexual contact. He was up to date with routine immunisations, and hepatitis A and typhoid immunisations. He had no significant medical history, and was not on any medications.

On examination, he was icteric, febrile (39.9°C) and tachycardic (110 beats/min). His blood pressure was 140/80 mmHg, respiratory rate was 20 breaths/min and O<sub>2</sub> saturation was 98% on air. Cardiorespiratory examinations were unremarkable. Right upper quadrant abdominal tenderness and mild hepatomegaly were noted. There was no rash or lymphadenopathy. He was referred to an emergency department, where initial investigations revealed:

- normal haemoglobin – 163 g/L
- marked leukopenia –  $2.7 \times 10^9/L$  (reference range:  $4.5\text{--}11 \times 10^9/L$ )
- lymphopenia –  $0.36 \times 10^9/L$  (reference range:  $1\text{--}4 \times 10^9/L$ )
- thrombocytopenia –  $93 \times 10^9/L$  (reference range:  $150\text{--}400 \times 10^9/L$ )
- acute kidney injury –
  - creatinine: 120  $\mu\text{mol/L}$
  - estimated glomerular filtration rate: 46 mL/min/1.73 m<sup>2</sup>
- acute hepatitis –
  - total serum protein: 61 g/L (reference range: 65–85 g/L)
  - aspartate aminotransferase: 400 U/L (reference range: 10–45 U/L)
  - alanine aminotransferase: 364 U/L (reference range: 5–45 U/L)
  - bilirubin: 112  $\mu\text{mol/L}$  (reference range: <20  $\mu\text{mol/L}$ )

- elevated lactate – 3.4 mmol/L (reference range: <2 mmol/L)
- elevated C-reactive protein – 232 mg/L (reference range: <5 mg/L).

International normalised ratio and chest X-ray were normal. An abdominal ultrasound showed a mildly enlarged liver consistent with acute hepatitis, but was otherwise normal. Blood cultures and laboratory tests for malaria, dengue, human immunodeficiency virus, cytomegalovirus, Zika virus, flavivirus, rickettsia and hepatitis C were all negative. Test results also showed immunity to Epstein–Barr virus, and hepatitis A and B. *Leptospira* IgM ELISA was reactive, but MAT was negative (titre <1:50).

He was admitted to hospital and commenced on doxycycline 100 mg twice daily for presumed leptospirosis. Over three days, his fever and symptoms resolved, and blood markers improved. He was discharged home to complete a course of doxycycline, and made a full recovery.

Follow-up serology showed persistently reactive IgM ELISA, but only low MAT titres (1:100 against serovar Celledoni), suggestive, but not definitive, of recent infection. *Leptospira* DNA was detected by PCR performed retrospectively on the initial specimen. The inconclusive serology results most likely represent infection with an unusual or yet unidentified serovar from PNG.

This case illustrates a classic presentation of severe leptospirosis after high-risk exposure in a tropical, developing country, and the challenges of confirming infections with exotic serovars. The patient presented at one week after symptom onset (at the transition between acute/bacteraemic and late/immune phase), and a more timely diagnosis could have been made if both PCR and serology were initially requested.

### Surveillance, prevention and control

Leptospirosis is a notifiable disease, and reporting to NNDSS is mandatory. Cases are investigated by the public health units

of the specific state and territory, and risk factors and potential infection sources are explored.

Infection risk can be reduced by avoiding direct contact with contaminated soil or water (especially floodwaters), and animals or animal products. Those at occupational risk, such as farmers, abattoir and meat workers, banana workers and military personnel, should be provided with educational materials about preventive measures<sup>24</sup> and advised to wear protective gear (eg boots, goggles, aprons, gloves). Open wounds should be cleaned and covered. Thorough washing is recommended after exposure to contaminated soil, water, animals or animal products. Travellers to tropical developing countries should be advised to avoid floodwaters, or swimming in rivers and waterfalls after heavy rainfall. Those at high risk of infection should be advised to seek medical care promptly if they develop a febrile illness.

Infection risk can also be reduced by control measures aimed at minimising environmental contamination, including livestock vaccination, segregating infected animals, rodent control, flood mitigation and reducing garbage, which attracts rodents and blocks drains. Sources of infection identified through case investigations should be managed appropriately to reduce the risk of further cases. During high-risk periods (eg post-flooding), public health warnings and alerts should be issued.

Doxycycline has been considered for prophylaxis, but a systematic review concluded that regular use at 200 mg weekly was associated with nausea and vomiting, and there was no clear benefit for reducing the risk of leptospirosis.<sup>25</sup> Routine use is therefore not recommended, but might be considered if short-term intense exposures are anticipated (eg soldiers, outbreak response personnel, recreational exposure) or after high-risk exposures (eg floodwaters). Doxycycline can also provide protection against other infectious disease (eg malaria, rickettsia). For travellers to malaria-endemic areas who may be at risk of leptospirosis, using doxycycline for malaria prophylaxis (in preference

to other antimalarial medications) could be considered. Human vaccines are rarely used (none are available in Australia) because of limited effectiveness, adverse reactions and short duration of protection.<sup>26</sup>

## Key points

- For patients with risk factors, leptospirosis should be considered as a differential diagnosis of undifferentiated febrile illness and the complications discussed above.
- A high index of clinical suspicion is required to ensure early diagnosis and treatment, and to minimise the risk of complications.
- Patients involved in high-risk activities should be advised to seek medical care promptly if they develop a fever.
- Diagnosis is confirmed by serology or culture, but PCR is valuable in the early phase of the infection.
- Severe cases and complications should be referred to a hospital for inpatient management.

## Resources

- eTG, Antibiotic, <https://tgldcdp.tg.org.au/etgAccess>
- WHO/FAO/OIE Leptospirosis Reference Laboratory, Health Support Queensland, [www.health.qld.gov.au/qhcss/lepto](http://www.health.qld.gov.au/qhcss/lepto)
- Queensland Health's guidelines for public health units, including laboratory diagnosis, case definitions, preventative measures, [www.health.qld.gov.au/cdgc/index/lepto](http://www.health.qld.gov.au/cdgc/index/lepto)
- Prevention and control of leptospirosis (educational materials for farmers), <http://saferfarms.org.nz/guides/prevention-and-control-of-leptospirosis>
- World Health Organization, Leptospirosis, [www.who.int/topics/leptospirosis/en](http://www.who.int/topics/leptospirosis/en)
- US Centres for Disease Control and Prevention, Leptospirosis, [www.cdc.gov/leptospirosis](http://www.cdc.gov/leptospirosis)

## Authors

Colleen L Lau MBBS, MPH&TM, PhD, FRACGP, NHMRC Fellow, Department of Global Health, Research School of Population Health, Australian National University, Canberra, ACT; Travel Medicine Consultant, Travel Medicine Alliance Clinics Australia. [colleen.lau@anu.edu.au](mailto:colleen.lau@anu.edu.au)

Nicola Townell MBChB, BSc, FRCPA, FRACP, Infectious Disease Physician, Infectious Disease Department, Mater Hospital Brisbane, Mater Health, South Brisbane, Qld

Eloise Stephenson MSc, BSc, PhD candidate and sessional academic, Environmental Futures Research Institute, Griffith University, Brisbane, Qld

Debra van den Berg MPH, RN, Public Health Officer, Communicable Disease Surveillance, North Coast Public Health Unit, Lismore, NSW

Scott B Craig PhD, MSc, BSc(Hon), BSSc, Senior Supervising Scientist, WHO Collaborating Centre for Reference and Research on Leptospirosis, Queensland Health Forensic and Scientific Services, Qld

Competing interests: None.

Provenance and peer review: Commissioned, externally peer reviewed.

Funding: CLL was supported by an Australian National Health and Medical Research Council Fellowship (1109035).

## References

1. Faine S, Adler B, Bolin C, Perolat P. *Leptospira* and leptospirosis. 2nd edn. Melbourne, Australia: MediSci, 1999.
2. Bharti AR, Nally JE, Ricaldi JN, et al. Leptospirosis: A zoonotic disease of global importance. *Lancet Infect Dis* 2003;3(12):757-71.
3. Lau CL, Smythe LD, Craig SB, Weinstein P. Climate change, flooding, urbanisation and leptospirosis: Fuelling the fire? *Trans R Soc Trop Med Hyg* 2010;104(10):631-38.
4. Costa F, Hagan JE, Calcagno J, et al. Global morbidity and mortality of leptospirosis: A systematic review. *PLoS Negl Trop Dis* 2015;9(9):e0003898.
5. Lau C. Human leptospirosis in Oceania. In Loukas A, editor. *Neglected tropical diseases*. Oceania: Springer, 2016; p. 177-92.
6. Department of Health. National notifiable diseases: Surveillance system. Canberra: DoH, 2017. Available at [www9.health.gov.au/cda/source/cda-index.cfm](http://www9.health.gov.au/cda/source/cda-index.cfm) [Accessed 5 December 2017].
7. Queensland Health. Notifiable conditions annual reporting. Brisbane: Queensland Health, 2017. Available at [www.health.qld.gov.au/clinical-practice/guidelines-procedures/diseases-infection/surveillance/reports/notifiable/annual](http://www.health.qld.gov.au/clinical-practice/guidelines-procedures/diseases-infection/surveillance/reports/notifiable/annual) [Accessed 5 December 2017].
8. Wynwood SJ, Craig SB, Graham GC, et al. The emergence of *Leptospira borgpetersenii* serovar Arborea as the dominant infecting serovar following the summer of natural disasters in Queensland, Australia 2011. *Trop Biomed* 2014;31(2):281-85.
9. Smith JK, Young MM, Wilson KL, Craig SB. Leptospirosis following a major flood in Central Queensland, Australia. *Epidemiol Infect* 2013;141(3):585-90.
10. Lau CL, Skelly C, Dohnt M, Smythe LD. The emergence of *Leptospira borgpetersenii* serovar Arborea in Queensland, Australia, 2001 to 2013. *BMC Infect Dis* 2015;15(1):230.
11. Lau C, Smythe L, Weinstein P. Leptospirosis: An emerging disease in travellers. *Travel Med Infect Dis* 2010;8(1):33-39.
12. Ko AI, Galvão Reis M, Ribeiro Dourado CM, Johnson WD Jr, Riley LW. Urban epidemic of severe leptospirosis in Brazil. Salvador Leptospirosis Study Group. *Lancet* 1999;354(9181):820-25.
13. Sehgal SC, Sugunan AP, Vijayachari P. Outbreak of leptospirosis after the cyclone in Orissa. *Natl Med J India* 2002;15(1):22-23.
14. Amilasan AS, Ujiie M, Suzuki M, et al. Outbreak of leptospirosis after flood, the Philippines, 2009. *Emerg Infect Dis* 2012;18(1):91-94.
15. Lau CL, DePasquale JM. Leptospirosis, diagnostic challenges, American Samoa. *Emerg Infect Dis* 2012;18(12):2079-81.
16. Sharp TM, Bracero J, Rivera A, et al. Fatal human co-infection with *Leptospira* spp. and dengue virus, Puerto Rico, 2010. *Emerg Infect Dis* 2012;18(5):878-80.
17. Department of Health. Australian national notifiable diseases case definitions - Leptospirosis. Canberra: DoH, 2004. Available at [www.health.gov.au/internet/main/publishing.nsf/Content/cda-surveil-nndss-casedefs-cd\\_lepto.htm](http://www.health.gov.au/internet/main/publishing.nsf/Content/cda-surveil-nndss-casedefs-cd_lepto.htm) [Accessed 5 December 2017].
18. Craig S, Lau C, Tulsiani SM, Graham GC, Smythe L. Leptospirosis. *Aust Fam Physician* 2011;40(1-2):9.
19. Tulsiani SM, Lau CL, Graham GC, et al. Emerging tropical diseases in Australia. Part 1. Leptospirosis. *Ann Trop Med Parasitol* 2010;104(7):543-56.
20. Queensland Health. Leptospirosis reference laboratory. Brisbane: Queensland Health, updated 2016. Available at [www.health.qld.gov.au/qhcss/lepto](http://www.health.qld.gov.au/qhcss/lepto) [Accessed 5 December 2017].
21. Therapeutic Guidelines Limited. Leptospirosis [revised 2014 Nov]. eTG Complete. Melbourne: Therapeutic Guidelines Limited, 2017.
22. Guerrier G, D'Ortenzio E. The Jarisch-Herxheimer reaction in leptospirosis: A systematic review. *PLoS One* 2013;8(3):e59266.
23. Rodrigo C, Lakshitha de Silva N, Goonaratne R, et al. High dose corticosteroids in severe leptospirosis: A systematic review. *Trans R Soc Trop Med Hyg* 2014;108(12):743-50.
24. Worksafe New Zealand. Prevention and control of leptospirosis. Wellington: Worksafe New Zealand, 2017. Available at <https://worksafe.govt.nz/topic-and-industry/working-with-animals/prevention-and-control-of-leptospirosis> [Accessed 5 December 2017].
25. Brett-Major DM, Lipnick RJ. Antibiotic prophylaxis for leptospirosis. *Cochrane Database Syst Rev* 2009;(3):CD007342.
26. Adler B. Vaccines against leptospirosis. In: Adler B ed. *Leptospira and leptospirosis*. Current topics in microbiology and immunology, vol 387. Berlin, Heidelberg: Springer, 2015.

correspondence [ajgp@racgp.org.au](mailto:ajgp@racgp.org.au)