

**A stable isotope ratio approach to investigate the origins of illicit
methamphetamine in Queensland, Australia**

Author

Meikle, Joe, Cresswell, Sarah L, Boyd, Sue E, Carter, James F, Collett, Simon P

Published

2019

Journal Title

Forensic Chemistry

Version

Accepted Manuscript (AM)

DOI

[10.1016/j.forc.2019.100174](https://doi.org/10.1016/j.forc.2019.100174)

Rights statement

© 2019 Elsevier. Licensed under the Creative Commons Attribution-NonCommercial-NoDerivatives 4.0 International Licence, which permits unrestricted, non-commercial use, distribution and reproduction in any medium, providing that the work is properly cited.

Downloaded from

<http://hdl.handle.net/10072/393936>

Griffith Research Online

<https://research-repository.griffith.edu.au>

Forensic Chemistry

A stable isotope ratio approach to investigate the origins of illicit methylamphetamine in Queensland, Australia

--Manuscript Draft--

Manuscript Number:	
Article Type:	Full Length Article
Section/Category:	Technology Readiness Level 3
Keywords:	Isotope ratio mass spectrometry; Likelihood ratios; Methamphetamine; Methylamphetamine; Probability statistics
Corresponding Author:	James F Carter Queensland Health Brisbane, Australia
First Author:	Joe Meikle
Order of Authors:	Joe Meikle Sarah L. Cresswell Sue E. Boyd James F Carter Simon P. Collett
Abstract:	<p>This project determined the stable isotopic compositions ($\delta^2\text{H}$ / $\delta^{13}\text{C}$ / $\delta^{15}\text{N}$) of 181 samples of high purity illicit methylamphetamine seized in Queensland between July 2015 and February 2017. The project was undertaken to augment existing stable isotopic composition data for methylamphetamine samples seized at Australian borders.</p> <p>Based on a rule-of-thumb developed by the National Measurements Institute of Australia a majority of Queensland samples (~ 88%) were classified as being manufactured from synthetic ephedrine/pseudo-ephedrine (e.g. from 1-phenyl-1-propanone). A much smaller number of samples (~ 12%) were initially classified as being manufactured from natural ephedrine/pseudo-ephedrine (from <i>Ephedra sinica</i>). Subsequent analysis of samples classified as having a natural precursor found them to be enantiomerically pure l-methylamphetamine and, therefore, most likely manufactured from phenylpropan-2-one. In contrast to border seizures, no methylamphetamine seizures from Queensland had isotopic compositions consistent with being manufactured from semi-synthetic ephedrine/pseudo-ephedrine (fermentation of benzaldehyde and pyruvic acid).</p> <p>A small number of enantiomerically pure d-methylamphetamine samples with $\delta^{15}\text{N}$ values intermediate between natural and synthetic classification were also assumed to be derived from phenylpropan-2-one. These samples were isotopically similar to seizures reported in Japan that had been imported from Eurasia.</p> <p>The combination of $\delta^2\text{H}$, $\delta^{13}\text{C}$ and $\delta^{15}\text{N}$ measurements was used to create a searchable database that identified a number of isotopically similar samples of methylamphetamine seized at different locations and different times. A kernel density estimate model was used to assign "moderately-strong" to "strong" support that these samples came from the same synthetic batch.</p>
Suggested Reviewers:	Jennifer R Mallette USDoJ Jennifer.R.Mallette@usdoj.gov Paul Kirkbride Flinders University paul.kirkbride@flinders.edu.au Russell Frew

	University of Otago r.d.frew@otago.ac.nz
Opposed Reviewers:	

Highlights

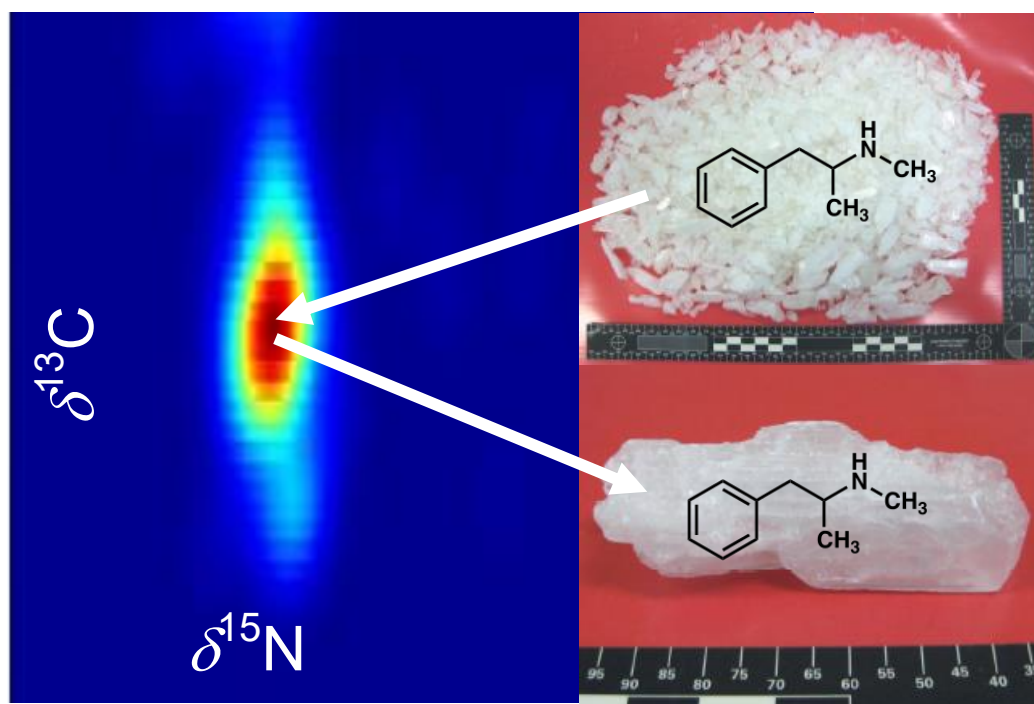
181 samples of methylamphetamine seized in Qld, Australia were analysed

Qld MA was initially classified as prepared from natural or synthetic pseudoephedrine

Samples classified as natural were subsequently found to be l-MA derived from P2P

Seizures at Australian borders were not representative of Qld seizures

Stable isotope data linked seizures from different times and locations in Qld



1 A stable isotope ratio approach to investigate the origins
2
3 of illicit methylamphetamine in Queensland, Australia.
4
5
6
7
8

9 Joe Meikle^a, Sarah L. Cresswell^a, Sue E. Boyd^a,
10 James F. Carter^{b,*}, Simon P. Collett^b
11

12
13
14 ^a School of Environment and Science, Griffith University, Nathan, Qld 4111, Australia
15

16 ^b Queensland Health Forensic and Scientific Services, Coopers Plains, Qld 4108, Australia
17

18
19 * corresponding author.
20

21 *E-mail* address: Jim.Carter@health.qld.gov.au (JF Carter).
22
23
24
25
26
27
28
29
30
31
32
33
34
35
36
37
38
39
40
41
42
43
44
45
46
47
48
49
50
51
52
53
54
55
56
57
58
59
60
61
62
63
64
65

1
2
3
4
5
6
7
8
9
10
11
12
13
14
15
16
17
18
19
20
21
22
23
24
25
26
27
28
29
30
31
32
33
34
35
36
37
38
39
40
41
42
43
44
45
46
47
48
49
50
51
52
53
54
55
56
57
58
59
60
61
62
63
64
65

1 A B S T R A C T

2 This project determined the stable isotopic compositions ($\delta^2\text{H}$ / $\delta^{13}\text{C}$ / $\delta^{15}\text{N}$) of 181 samples of high purity
3 illicit methylamphetamine seized in Queensland between July 2015 and February 2017. The project was
4 undertaken to augment existing stable isotopic composition data for methylamphetamine samples seized
5 at Australian borders.

6 Based on a rule-of-thumb developed by the National Measurements Institute of Australia a majority of
7 Queensland samples (~ 88 %) were classified as being manufactured from synthetic ephedrine/pseudo-
8 ephedrine (e.g. from 1-phenyl-1-propanone). A much smaller number of samples (~ 12 %) were initially
9 classified as being manufactured from natural ephedrine/pseudo-ephedrine (from *Ephedra sinica*).
10 Subsequent analysis of samples classified as having a natural precursor found them to be enantiomerically
11 pure l-methylamphetamine and, therefore, most likely manufactured from phenylpropan-2-one. In contrast
12 to border seizures, no methylamphetamine seizures from Queensland had isotopic compositions consistent
13 with being manufactured from semi-synthetic ephedrine/pseudo-ephedrine (fermentation of benzaldehyde
14 and pyruvic acid).

15 A small number of enantiomerically pure d-methylamphetamine samples with $\delta^{15}\text{N}$ values intermediate
16 between natural and synthetic classification were also assumed to be derived from phenylpropan-2-one.
17 These samples were isotopically similar to seizures reported in Japan that had been imported from Eurasia.

18 The combination of $\delta^2\text{H}$, $\delta^{13}\text{C}$ and $\delta^{15}\text{N}$ measurements was used to create a searchable database that
19 identified a number of isotopically similar samples of methylamphetamine seized at different locations and
20 different times. A kernel density estimate model was used to assign “moderately-strong” to “strong” support
21 that these samples came from the same synthetic batch.

- 22 *Keywords:*
23 Isotope ratio mass spectrometry
24 Likelihood ratios
25 Methamphetamine
26 Methylamphetamine
27 Probability statistics
28

1. Introduction

During the 1990s worldwide production of amphetamine-type stimulants (ATS) increased as they became the fashionable drugs of choice for party goers [1] and today they are the second most widely used drugs after cannabis [2]. Manufacturers or “cooks” of ATS such as methylamphetamine (MA) aka methamphetamine, methamphet or ice have become increasingly skilled in producing pure products and/or removing unwanted by-products and impurities so that street level drugs are now often described as “pharmaceutical grade” [3]. In many cases, low purity products sold at street level result from the addition of cutting agents, such as methylsulfonylmethane (MSM) or isopropylbenzylamine, rather than poor synthetic chemistry. One unfortunate consequence of pharmaceutical grade illicit drugs is that traditional, chromatographic methods of profiling have become ineffective as the amounts of side-products, unreacted precursors etc have decreased [4]. For this reason, researchers have started to consider other methods to characterise synthetic drugs including determining the stable isotopic composition [5].

A number of studies has have demonstrated that a combination of $\delta^{13}\text{C}$ / $\delta^{15}\text{N}$ measurements provided a characteristic isotopic profile of synthetic drugs such as; MA, 3,4-methylenedioxymethylamphetamine (MDMA) and 3,4-methylenedioxyamphetamine (MDA), both commonly known as “ecstasy” [6-9]. The data generated by studies such as these have proved valuable in linking tablets or powders seized at different locations and/or at different times to a common synthetic batch [10-12]. When considering links between MA from multiple seizures, comparisons of $\delta^{13}\text{C}$ / $\delta^{15}\text{N}$ compositions were also found to highlight different grouping patterns compared to conventional profiling techniques [13].

Early research demonstrated that batches of MA, manufactured by reductive amination of 1-phenylpropan-2-one (aka phenylacetone or P2P), using identical reagents and equipment had markedly different $\delta^{15}\text{N}$ compositions [14]. Further, systematic research into the preparation of MDMA by reductive amination found significant isotopic variation with changing reaction conditions; $\delta^2\text{H}$ values were most affected by imine stir time; $\delta^{13}\text{C}$ values were most affected by the overall efficiency (completeness) of the reaction; $\delta^{15}\text{N}$ values were most affected by an excess of methylamine [15]. This line of research concluded that the isotopic compositions of ATS

1
2
3
4 30 prepared by reductive amination were characteristic of individual reaction batches more so than
5
6 31 the precursor materials.
7

8
9 32 In contrast, other research has found that samples of MA, prepared from ephedrine/pseudo-
10 33 ephedrine (Eph/PSE) retained the $\delta^2\text{H}$, $\delta^{13}\text{C}$ and $\delta^{15}\text{N}$ compositions of the starting materials [16-
11 34 18]. This relationship has been demonstrated for a number of synthetic routes (*Nagal* [hydroiodic
12 35 acid/red phosphorus], *Moscow* [red phosphorus/iodine], *Hypo* [hypophosphorus acid/iodine] or
13 36 *Emde* [thionyl chloride]) and has also been shown to be unaffected by variations in the reaction
14 37 conditions [16]. This line of research concluded that the isotopic composition of MA could be used
15 38 to identify the source of Eph/PSE precursors as being; *natural* (*Ephedra sinica*), *semi-synthetic*
16 39 (fermentation of benzaldehyde and pyruvic acid) or fully *synthetic* (e.g. 1-phenyl-1-propanone aka
17 40 propiophenone) [19].
18

19 41 Complementary research into some physiochemical processes used during MA manufacture, such
20 42 as enantiomeric resolution [20] and crystallization [21], found some evidence for isotopic
21 43 fractionation, but concluded that the isotopic profile of the final MA-HCl product retained useful
22 44 information about its provenance.
23
24

25 45 In Australia, the Australian Federal Police (AFP) Forensic Drug Intelligence team operates a drug
26 46 profiling capability through the National Measurements Institute (NMIA). The information is used
27 47 for operational intelligence, i.e. to link different seizures, with the aim of disrupting drug
28 48 trafficking networks. In 2013 the NMIA reported stable isotopic composition data ($\delta^2\text{H}$ / $\delta^{13}\text{C}$ /
29 49 $\delta^{15}\text{N}$) for 782 samples of MA seized at Australian borders and compared these to samples of MA
30 50 synthesized in-house from well characterized starting materials [19]. The study presented here
31 51 aimed to compare and contrast these data with high purity MA seized within Queensland,
32 52 Australia.
33

34 53 **2. Materials and methods**

35 54 *2.1. Methylamphetamine samples*

36 55 A total of 181 MA samples were sub-sampled from exhibits submitted by the Queensland Police
37 56 Service (QPS) to the Queensland Health Forensic and Scientific Services (QHFSS) Illicit Drugs
38 57 Group between July 2015 and February 2017. The identity of the active ingredient (MA) was
39 58 confirmed by gas chromatography mass spectrometry (GC/MS) and the percentage purity was
40
41
42
43
44
45
46
47
48
49
50
51
52
53
54
55
56
57
58
59
60
61
62
63
64
65

1
2
3
4 59 determined by high-performance liquid chromatography (HPLC) according to NATA (ISO/IEC
5 60 17025:2005) accredited laboratory methods. Sample purities (expressed as free-base) ranged from
6 61 60.2 to 82.2 % with an average purity of 76.6 %, equivalent to 95.0 % expressed as MA-HCl.
7
8
9

10 62 The QHFSS Illicit Drugs Group does not routinely undertake drug profiling analyses, such as
11 63 acquiring chemical or elemental compositions. This project was undertaken to assess what
12 64 evidential and intelligence value that might be obtained from stable isotopic analysis.
13
14
15
16

17 65 *2.2. Stable isotopic analysis*

18
19 66 All isotope ratio measurements were performed using a Delta V^{PLUS} Isotope Ratio Mass
20 67 Spectrometer (Thermo Scientific, Bremen, Germany) coupled to a ConFlo IV interface for
21 68 working gas introduction and sample dilution. Data were collected using ISODAT 3 software.
22
23
24

25 69 For carbon and nitrogen analysis, samples were crimped into tin capsules (4 × 3.2 mm, IVA
26 70 Analysentechnik, Meerbusch, Germany). Samples were analysed using a Flash 2000 elemental
27 71 analyser (EA) (Thermo Scientific) in flash combustion mode at 950 °C, with a helium flow of 100
28 72 mL/min, followed by a post reactor GC column at 110 °C. The reactor was packed with chromium
29 73 (II) oxide, electrolytic copper and silvered cobaltous (II, III) oxide (IVA). A sulfur trap (silver
30 74 wool) and a water trap (magnesium perchlorate) were placed between the reactor and the GC
31 75 column. For nitrogen analysis an additional CO₂ trap (Carbosorb™ and magnesium perchlorate)
32 76 was installed following the water trap. Carbon measurements were normalised to the VPDB scale
33 77 using IAEA-CH-7 (International Atomic Energy Agency [IAEA], Vienna, Austria) and glucose
34 78 solutions calibrated against the reference materials NBS 19 and LSVEC [22]. Nitrogen
35 79 measurements were normalised to the N_{AIR} scale using ammonium sulphate reference materials
36 80 IAEA-N-1, IAEA-N-2, and USGS25 (IAEA).
37
38
39
40
41
42
43
44
45
46
47

48 81 For hydrogen analysis, samples were crimped into silver capsules (4 × 3.2 mm, IVA). Samples
49 82 were analysed using a TC/EA elemental analyser (Thermo Scientific) at 1400 °C with a helium
50 83 flow of 90 mL/min via a bottom-feed adaptor. The glassy carbon reactor tube was replaced with a
51 84 custom-made alumina tube (IVA) (12 mm o.d., 6 mm i.d., length 420 mm). The reactor packing
52 85 comprised glassy carbon (IVA) and chromium (Aldrich, Darmstadt, Germany) in the upper 50 mm
53 86 and glassy carbon and manganese (Aldrich) in the lower 50 mm. Samples were introduced into the
54 87 reactor via a Zero-Blank auto-sampler (Costech Analytical Technologies Inc., Valencia, CA,
55
56
57
58
59
60
61
62
63
64
65

1
2
3
4 88 USA). Hydrogen measurements were normalised to the VSMOW scale using silver encapsulated
5
6 89 waters GISP, VSMOW and UC03 (United States Geological Survey [USGS], Reston, VA, USA).
7
8
9 90 A sample of phenacetin (N-(4-ethoxyphenyl)-acetamide), with well characterised isotopic
10
11 91 composition [23, 24] was analysed at the beginning of each acquisition sequence and after every
12
13 92 five samples for quality control purposes. These data are presented in the supplementary material.

14 93 *2.3 Chiral analysis*

15
16
17 94 The separation and identification of MA enantiomers was achieved using the derivatizing reagent
18
19 95 N-trifluoroacetyl-(S)-propyl chloride (Sigma, Castle Hill, NSW, Australia) [25] prepared as a 0.1
20
21 96 M solution in dichloromethane.

22
23 97 Approximately 1 mg of sample was dissolved in 1 mL of ammonia infused hexane in a 2 mL
24
25 98 autosampler vial and 20 μ L of the derivatising reagent added. Reference samples of d-MA and
26
27 99 d,l-MA (Cerilliant, Kinesis Australia, Redland Bay, QLD, Australia) were prepared in the same
28
29 100 way.

30
31 101 Samples were analysed using an Agilent 7890B GC/MS equipped with a 30m, 0.25 mm, HP-
32
33 102 1MS column. The column was programmed from 65 °C (1 min hold) to 300 °C (3.3 min hold) at
34
35 103 a rate of 40 °C/min. The injector and transfer line were maintained at 280 °C. The MS was
36
37 104 operated at 70eV electron ionization with a scan range from 35-500 *m/z*.

38 105 *2.4. Data analysis*

39
40
41 106 Scatter plots and k-means clustering were performed using SYSTAT 12 statistical and graphics
42
43 107 software (Systat Software, Inc. San Jose, CA, USA). Expectation maximization clustering was
44
45 108 performed using SPSS Statistics 24 with AMOS 23 (IBM, Chicago, Illinois, USA). Spatial plots,
46
47 109 kernel density estimations and likelihood ratios were calculated using R 3.3.3 software
48
49 110 environment for statistical computing and graphics (www.r-project.org).

50 51 111 52 53 112 **3. Results and discussion**

54 55 113 *3.1. Notes on δ^2H analysis*

56
57
58 114 Hydrogen isotopic analyses were performed using an alumina inner reactor tube packed with a
59
60 115 mixture of glassy carbon, metallic chromium and metallic manganese as described above. This

1
2
3
4
5
6
7
8
9
10
11
12
13
14
15
16
17
18
19
20
21
22
23
24
25
26
27
28
29
30
31
32
33
34
35
36
37
38
39
40
41
42
43
44
45
46
47
48
49
50
51
52
53
54
55
56
57
58
59
60
61
62
63
64
65

116 packing was based on recently published research that addressed problems in the high temperature
117 conversion of organic molecules containing hetero-atoms such as nitrogen, chlorine or sulfur to
118 H₂ gas [26, 27]. High temperature conversion using only glassy carbon, was reported to form
119 compounds such as HCN and HCl so that the final yield of H₂ did not reflect the isotopic
120 composition of the hydrogen present in the parent molecule. Complete conversion of organic
121 hydrogen to H₂ was considered essential for the analysis MA-HCl that contained a relatively high
122 proportion of both nitrogen and chlorine and, potentially, sulfur from MSM as a cutting agent.

123 Initial trials of this reactor packing using a conventional glassy carbon inner reactor tube (12 mm
124 o.d., 7 mm i.d., length 356 mm) produced broad, tailing peaks approximately 57 s wide. This was
125 attributed to interactions with the chromium/manganese packing. In addition, after a period of use
126 the chromium/glassy carbon packing became rigid and difficult to remove without damaging the
127 glassy carbon tube. To overcome these problems, the glassy carbon tube was replaced with an
128 alumina tube with a 6 mm i.d. (bottom drilled to 7 mm to fit the bottom feed adaptor) to increase
129 the linear velocity of the carrier gas. Using this inner reactor tube, peak widths were typically 42
130 s and comparable to peak widths produced using only glassy carbon as a packing. After calibrating
131 the instrument with silver encapsulated waters, organic reference materials IAEA-CH-7 (-100.3
132 ‰ ± 2.0) and NBS 22 (-116.9 ‰ ± 0.9) were analysed to test the performance of the reactor to
133 organic materials. Both reference materials gave results within the certified uncertainties
134 (<http://www.ciaaw.org/hydrogen-references.htm> accessed Feb. 2018). This reactor composition
135 proved to have a further advantage because it did not exhibit memory effects associated with glassy
136 carbon reactors [28] *i.e.* the measured isotopic composition of a sample was not affected by the
137 isotopic composition of the previous samples. Because the alumina reactor tube had a smaller i.d.
138 than the conventional glassy carbon tube it was necessary to reduce the size of the graphite
139 crucibles by filing the corners using fine abrasive paper. Using this reactor configuration it was
140 possible to analyse three batches of samples, approximately 120 individual capsules per batch,
141 before the reactor packing had to be replaced. This was equivalent to approximately 60 samples
142 analysed in triplicate with corresponding calibration and quality control materials per reactor.

143 To assess if extrinsic hydrogen was present, due to moisture absorbed or adsorbed by the samples,
144 the $\delta^2\text{H}$ compositions of five samples of MA-HCl, with purities ranging from 69 to 80.4 %, were
145 measured before and after four days of drying under vacuum (60 °C and 10 mbar). These data are

1
2
3
4
5
6
7
8
9
10
11
12
13
14
15
16
17
18
19
20
21
22
23
24
25
26
27
28
29
30
31
32
33
34
35
36
37
38
39
40
41
42
43
44
45
46
47
48
49
50
51
52
53
54
55
56
57
58
59
60
61
62
63
64
65

146 given in Appendix A. The average change in isotopic composition over four days was -1.5 ‰ and,
147 it was concluded that heating/vacuum treatment was not necessary for routine samples.

148 3.2. Synthetic origins of Queensland MA

149 Based on published research, summarized in Table 1, the NMIA has developed a rule-of-thumb
150 (RoT) to characterize the Eph/PSE precursors of MA as *natural* (*Ephedra sinica*), *semi-synthetic*
151 (fermentation of benzaldehyde) or fully *synthetic* (e.g. propiophenone). The NMIA also used k-
152 means and expectation maximisation (EM) clustering techniques to assign seized samples to these
153 three classes with 95.5 % agreement between the two statistical methods [19]. Both methods also
154 showed close agreement with the RoT.

155 Table 2 shows the results of the three classification techniques applied to the Queensland survey
156 data together with the original NMIA/AFP results. Initial RoT classification found that none of the
157 Queensland survey samples had an isotopic composition consistent with manufacture from *semi-*
158 *synthetic* Eph/PSE and, therefore, subsequent k-means and EM clustering methods were applied
159 to the Queensland survey data using a two-class model (*natural* versus *synthetic*).

160

1
2
3
4
5
6
7
8
9
10
11
12
13
14
15
16
17
18
19
20
21
22
23
24
25
26
27
28
29
30
31
32
33
34
35
36
37
38
39
40
41
42
43
44
45
46
47
48
49
50
51
52
53
54
55
56
57
58
59
60
61
62
63
64
65

161 **Table 1**

162 The expected isotopic composition range for MA derived from known precursors based on a
163 number of heuristic assessments.

precursor	isotopic composition		
	$\delta^{13}\text{C}_{\text{VPDB}}$	$\delta^{15}\text{N}_{\text{AIR}}$	
natural Eph/PSE	-26.5 to -30 ‰	> +2.5 ‰	Salouros <i>et al.</i> 2013
semi-synthetic Eph/PSE ^a	> -26.5 ‰		Makino <i>et al.</i> 2005
synthetic Eph/PSE	< -26.5 ‰	< +2.5 ‰	Salouros <i>et al.</i> 2013
P2P	-32 ‰	+5 ‰	Collins & Salouros 2015

164 ^a samples prepared from semi-synthetic Eph/PSE were also characterized by positive $\delta^2\text{H}$ values (Collins
165 *et al.* 2009)

166 **Table 2**

167 The percentage classification of MA precursors by rule-of-thumb (RoT), k-means and expectation
168 maximization (EM) methods.

Eph/PSE precursor	classification method		
	RoT	k-means	EM
	Queensland data		
semi-synthetic	0	NA	NA
synthetic	88	66	86
natural	12	34	14
	NMIA/AFP data		
semi-synthetic	34	37	39
synthetic	24	22	23
natural	42	41	38

169

1
2
3
4
5
6
7
8
9
10
11
12
13
14
15
16
17
18
19
20
21
22
23
24
25
26
27
28
29
30
31
32
33
34
35
36
37
38
39
40
41
42
43
44
45
46
47
48
49
50
51
52
53
54
55
56
57
58
59
60
61
62
63
64
65

170 The results in Table 2 showed that the majority (~ 88%) of Queensland MA had isotopic
171 compositions consistent with preparation from *synthetic* Eph/PSE with a much smaller number
172 consistent with *natural* Eph/PSE.

173 Australian Government reports have identified PSE, extracted from “cold and flu” medicines, as
174 the predominant precursor used to produce MA in Queensland for many years [2]. More recently,
175 however, there has been a significant increase in the amount of imported MA with an estimated
176 70 % originating in China [29]. In addition, half of the precursor chemicals seized in Australia and
177 New Zealand also originated in China and, to a lesser extent India [29]. Although the term Eph/PSE
178 is used throughout this report, to denote a precursor that may be either ephedrine or pseudo-
179 ephedrine, pharmaceutical PSE is typically manufactured from synthetic precursors such as
180 propiophenone [30]. Fermentation of benzaldehyde (the *semi-synthetic* method) yields a mixture
181 of Eph/PSE which may not be desirable in a commercial process.

182 Although the main finding from the Queensland survey was unsurprising a proportion, albeit small,
183 of the Queensland survey MA appeared to have been manufactured from Ephedra. There was also
184 a notable disagreement between assigned precursors using k-means or EM clustering, in contrast
185 to the NMIA/AFP results that showed close agreement between the two methods.

186 To investigate these findings further, the QHFSS Illicit Drugs Group undertook analyses to
187 determine the chiral form of MA samples with positive $\delta^{15}\text{N}$ values, which included all of the
188 samples classified as derived from *natural* Eph/PSE. Eph/PSE sourced from pharmaceutical
189 products (l-Eph or d-PSE) can be used to prepare enantiomerically pure d-MA, the physiologically
190 active form of the drug. In Mexico, however, large quantities of MA are prepared by reductive
191 amination of P2P which yields racemic MA that undergoes an optical resolution process to
192 separate the d and l forms of the drug [20] (as noted above, optical resolution is reported not to
193 have a significant effect on the isotopic composition of the final product). Although it has been
194 reported that 80 % of precursor chemicals used by Mexican cartels are sourced in China [29]
195 differences in the isotopic compositions of P2P and Eph/PSE derived MA should still be apparent.

196 The most ^{15}N enriched samples in the Queensland survey (+13.35 to +14.99 ‰) were all found to
197 be enantiomerically pure l-MA (samples #108 to 121). The majority of these samples came from
198 a single Police operation in North Booval that seized 14 exhibits, each weighing approximately
199 one kg. Two other samples of enantiomerically pure l-MA, with similar $\delta^{15}\text{N}$ compositions

1
2
3
4 200 (samples #31 and #145), were seized several weeks earlier at different locations and weighed only
5
6 201 a few grams. All other samples of MA with positive $\delta^{15}\text{N}$ values (+0.88 to +8.46 ‰) were found
7
8 202 to be enantiomerically pure d-MA. None of the samples in this survey were found to comprise
9
10 203 mixtures of the two enantiomers.

11
12 204 Samples of MA with $\delta^{15}\text{N}$ values intermediate between *synthetic* and *natural* Eph/PSE
13
14 205 classifications (+0.88 to +8.46 ‰) were initially assumed to be mixtures of MA produced from
15
16 206 *synthetic* and *natural* Eph/PSE. A previous report by the Japanese National Research Institute of
17
18 207 Police Science (JRIPS) identified MA seizures derived from several batches of MA, with different
19
20 208 sources of precursors, mixed together [31]. Considering both isotopic and chiral analysis, however,
21
22 209 it was apparent that the samples, consistent with *natural* Eph/PSE characteristics were more likely
23
24 210 to have been manufactured from P2P and it appeared likely that the d-MA samples with
25
26 211 intermediate $\delta^{15}\text{N}$ values (0 to +10 ‰) were also manufactured from P2P. These samples had $\delta^{13}\text{C}$
27
28 212 values (approximately -30 and -28 ‰) and $\delta^2\text{H}$ values (approximately -100 to -22 ‰) consistent
29
30 213 with data previously reported for P2P ($\delta^{13}\text{C} = -31.6$ to -28 ‰ and $\delta^2\text{H} = -71$ to -53 ‰) [32].

31 214 3.3. Queensland and Australian borders

32
33
34 215 The full dataset from the Queensland survey is presented in Appendix A of this manuscript. The
35
36 216 range of isotopic compositions in this study were; $\delta^2\text{H}_{\text{VSMOW}}$ -147.6 to -22.2, $\delta^{13}\text{C}_{\text{VPDB}}$ -30.01 to -
37
38 217 26.27 and $\delta^{15}\text{N}_{\text{AIR}}$ -10.18 to +14.99 ‰. The median standard deviations for these measurements
39
40 218 were; $\delta^2\text{H} = 0.7$, $\delta^{13}\text{C} = 0.04$ and $\delta^{15}\text{N} = 0.09$ ‰ (n=3). The range of isotopic compositions of the
41
42 219 Queensland survey was significantly narrower, for all three elements, than reported by NMIA
43
44 220 ($\delta^2\text{H}_{\text{VSMOW}}$ -249.9 to +103.0, $\delta^{13}\text{C}_{\text{VPDB}}$ -31.5 to -23.4 and $\delta^{15}\text{N}_{\text{AIR}}$ -14.9 to +19.4). Notably,
45
46 221 hydrogen and carbon data reported by NMIA spanned more than twice the range observed in the
47
48 222 Queensland survey.

49
50 223 Comparisons between Queensland and NMIA/AFP data can easily be visualized in the scatter-
51
52 224 plots shown in Figure 1. The delineation between *natural*, *semi-synthetic* and *synthetic* Eph/PSE
53
54 225 shown in Figure 1 is based on the RoT summarized in Table 1. The size of the circles in Figure 1
55
56 226 has no statistical significance, they simply approximate the characteristics of the three precursors
57
58 227 classifications.

1
2
3
4
5
6
7
8
9
10
11
12
13
14
15
16
17
18
19
20
21
22
23
24
25
26
27
28
29
30
31
32
33
34
35
36
37
38
39
40
41
42
43
44
45
46
47
48
49
50
51
52
53
54
55
56
57
58
59
60
61
62
63
64
65

228 From Figure 1a it was, again, apparent that the majority of samples in the Queensland survey had
229 $\delta^{13}\text{C}$ values below -26.5 ‰ and $\delta^{15}\text{N}$ values below $+2.5\text{ ‰}$, consistent with manufacture from
230 *synthetic* Eph/PSE. None of the Queensland survey samples had isotopic compositions consistent
231 with having been manufacture from *semi-synthetic* Eph/PSE. This finding was in contrast to the
232 NMIA/AFP data for which *semi-synthetic* and *natural* Eph/PSE were identified as the dominant
233 precursors. Relatively few of the samples from the Queensland survey had $\delta^{13}\text{C} / \delta^{15}\text{N}$ values
234 consistent with manufacture from *natural* Eph/PSE and most of these samples were subsequently
235 identified as enantiomerically pure l-MA and, therefore, most likely manufactured from P2P.

236 Figure 1b shows a plot of $\delta^2\text{H}$ versus $\delta^{15}\text{N}$ composition that displays similar trends to those shown
237 in Figure 1a, *i.e.* the majority of samples from the Queensland survey were shown to be derived
238 from *synthetic* Eph/PSE and none from *semi-synthetic* Eph/PSE. The absence of *semi-synthetic*
239 Eph/PSE derived MA was evident as this MA precursor is characterized by positive $\delta^2\text{H}$ values
240 [Collins et al. 2009].

241 In Figure 1b it was noticed that the $\delta^2\text{H}$ values for Queensland survey *synthetic* class appear
242 depleted with respect to the equivalent NMIA/AFP data which may be a bona fide difference or
243 may be due to different reactor materials used for measurements in the two laboratories. It has
244 been proposed that $\delta^2\text{H}$ measurements obtained using different reactor materials can be
245 standardized by reporting data for reference materials alongside sample data [33]. The data
246 obtained for the QC material (phenacetin) used in this study are presented in Appendix A (this
247 material is commercially available from LGC Standards, UK).

3.4. Queensland and Japanese data

249 Figure 2 shows a scatter plot of $\delta^{13}\text{C}$ versus $\delta^{15}\text{N}$ for MA from the Queensland survey compared
250 with MA samples seized in Japan and analysed by the JRIPS [Iwata 2008, Tsuj 2012]. The JRIPS
251 states that there are virtually no clandestine MA laboratories operating in Japan and, therefore, the
252 majority of seizures come from numerous locations around the world [18]. The Japanese data,
253 shown in Figure 2, are believed to represent MA from Eurasia although police intelligence only
254 knows the country from which the smuggled MA departed, not the country in which it was
255 manufactured. It is interesting to note that many of the Japanese MA samples, with $\delta^{15}\text{N}$ value
256 intermediate between the *synthetic* and *natural* classifications, had $\delta^{13}\text{C} / \delta^{15}\text{N}$ profiles very similar

1
2
3
4
5
6
7
8
9
10
11
12
13
14
15
16
17
18
19
20
21
22
23
24
25
26
27
28
29
30
31
32
33
34
35
36
37
38
39
40
41
42
43
44
45
46
47
48
49
50
51
52
53
54
55
56
57
58
59
60
61
62
63
64
65

257 to Queensland survey samples (Figure 2, triangle, green). The JRIPS state that they do not believe
258 that these samples originated in Australia and a conclusion may be that MA was smuggled to both
259 Japan and Australia from the same source in/or via Eurasia. Subsequent analyses of individual MA
260 crystals by the JRIPS found that MA seizures with intermediate $\delta^{15}\text{N}$ values were the result of
261 mixing several batches of MA from different precursor sources [31]. Samples tested as part of the
262 Queensland survey were homogenized prior to isotopic characterization and no evidence for a
263 mixed source was found. The JRIPS attributed samples with more depleted $\delta^{13}\text{C}$ values (Figure 2,
264 square, black) to a P2P precursor.

3.5. Finding links and weighing the evidence

266 Although a knowledge of synthetic precursors is important in understanding the operations of
267 clandestine MA laboratories, the stable isotopic composition of MA also provides a means to
268 associate or differentiate batches of MA seized at different times and locations. To facilitate this,
269 the average $\delta^2\text{H}$, $\delta^{13}\text{C}$ and $\delta^{15}\text{N}$ values for each sample from the Queensland survey were compiled
270 into a spreadsheet, including; the date and location of each seizure and the weight and purity of
271 the MA seized. These data are presented in Appendix A. Isotopic values in the “database” were
272 auto-scaled (Eq.1) so that $\delta^2\text{H}$, $\delta^{13}\text{C}$ and $\delta^{15}\text{N}$ data all had a similar range. Two samples (SAMP1
273 and SAMP2) were then compared using a simple Euclidean distance calculation (Eq.2). The
274 smaller the comparison distance, the greater the similarity between samples.

$$1 \quad \textit{autoscaled data} = \frac{\textit{data} - \textit{average}}{\textit{standard deviation}}$$

$$2 \quad \textit{comparison} = (\delta^2\text{H}_{\text{SAMP1}} - \delta^2\text{H}_{\text{SAMP2}})^2 + (\delta^{13}\text{C}_{\text{SAMP1}} - \delta^{13}\text{C}_{\text{SAMP2}})^2 + (\delta^{15}\text{N}_{\text{SAMP1}} - \delta^{15}\text{N}_{\text{SAMP2}})^2$$

280 Applying this comparison method to the Queensland survey data identified similarities between a
281 number of seizures from different locations, for example; Gympie (QLD 4570) and Mt. Tamborine
282 (QLD 4271) (samples #27 and #45) separated by a distance of approximately 242 km but seized
283 on the same date or Beerwah (QLD 4519) and Tewantin (QLD 4565) (sample #31 and #145)
284 separated by a distance of approximately 70 km and seized two days apart.

1
2
3
4
5
6
7
8
9
10
11
12
13
14
15
16
17
18
19
20
21
22
23
24
25
26
27
28
29
30
31
32
33
34
35
36
37
38
39
40
41
42
43
44
45
46
47
48
49
50
51
52
53
54
55
56
57
58
59
60
61
62
63
64
65

285 To test the strength of evidence that might be affirmed from a match in isotopic composition the
286 data were transformed into a three-dimensional kernel density estimate (KDE) matrix. The R script
287 for this process is given in Appendix B to this manuscript. To explain this process Figure 3 shows
288 an image of a simpler, two dimensional KDE of $\delta^{13}\text{C}$ and $\delta^{15}\text{N}$ data. Each cell of this matrix
289 represents the probability that a sample of MA has a given combination of $\delta^{13}\text{C} / \delta^{15}\text{N}$
290 compositions. Figure 3 has been colour coded so that combinations with low probability appear
291 dark blue and combinations with high probability appear red. This KDE matrix is a numeric
292 expression of the information presented in Figure 1a *i.e.* there is a high probability that samples
293 are derived from *synthetic* Eph/PSE, with a small region of $\delta^{13}\text{C} / \delta^{15}\text{N}$ combination being
294 extremely likely (Figure 3 “A”), and much lower probabilities for other combinations, *e.g.* (Figure
295 3 “B”). The KDE matrix allows the calculation of a likelihood ratio (LHR) based on the assumption
296 that two samples have identical (or very similar) $\delta^{13}\text{C} / \delta^{15}\text{N}$ compositions because they are from
297 the same batch rather than by random chance. This method was previously described for
298 polyethylene films [34] for which only $\delta^2\text{H}$ and $\delta^{13}\text{C}$ measurements were possible. In the present
299 study, a three-dimensional KDE matrix was calculated for $\delta^2\text{H} / \delta^{13}\text{C} / \delta^{15}\text{N}$ using bin sizes of 2.0,
300 0.2 and 0.2 ‰ respectively to produce a matrix with 142,884 cells.

301 For the examples above, seizures from Gympie and Mt. Tamborine shared a relatively common
302 $\delta^{13}\text{C} / \delta^{15}\text{N}$ *synthetic* precursor composition (Figure 3 “A”) and the LHR of these samples
303 originating from the same batch was calculated as 375. In contrast, the samples from Beerwah and
304 Tewantin shared a less common precursor composition (Figure 3 “B”), more enriched in ^{15}N , and
305 the LHR of these samples originating from the same batch was calculated as 3,959. The verbal
306 equivalent for these LHRs would be “moderately strong support” (LHR: 375) and “strong support”
307 (LHR: 3,959) respectively for the two pairs of samples having originated from the same batch [35].

308 Stable isotopic compositions have been used to predict information about the geographic origins
309 of drugs [36-38], but, to date, not synthetic drugs. It was hoped that spatial plots of $\delta^2\text{H}$, $\delta^{13}\text{C}$ or
310 $\delta^{15}\text{N}$ values might reveal patterns in manufacture, trafficking or supply of MA within Queensland.
311 These plots did not, however, appear to show any useful trends or distributions. Figure 4 shows a
312 spatial plot (or *ice-o-scape*) of the Queensland MA seizures colour coded according to the assigned
313 synthetic source of the precursor. The distribution of points on this map reflected the population
314 density of Queensland *i.e.* largely centred in Brisbane and the immediate surrounds. One feature,

1
2
3
4
5
6
7
8
9
10
11
12
13
14
15
16
17
18
19
20
21
22
23
24
25
26
27
28
29
30
31
32
33
34
35
36
37
38
39
40
41
42
43
44
45
46
47
48
49
50
51
52
53
54
55
56
57
58
59
60
61
62
63
64
65

315 however, was that only one P2P derived MA seizures occurred outside the Brisbane metropolitan
316 area, all other regional seizures were derived from *synthetic* Eph/PSE. Combining this type of data
317 from other Australian states or countries in the region may provide useful information about the
318 importation, manufacturing and trafficking of MA.

319 **4. Conclusions**

320 Stable isotopic analysis of 181 samples of MA seized in Queensland between July 2015 and
321 February 2017 allowed an assessment of the synthetic precursors by comparison with published
322 data. Excluding l-MA, the weight of the seizures in this survey ranged from 2.3 to 139.2 g and
323 they were considered typical of dealer-level amounts in Queensland.

324 The majority of Queensland samples (~ 88 %) were classified as being manufactured from
325 *synthetic* Eph/PSE including all but one seizure from regional Queensland. A smaller number of
326 samples were most likely derived from P2P and seized mainly in the Brisbane metropolitan area.
327 A number of the P2P derived samples were found to be enantiomerically pure l-MA. The size and
328 nature of these seizures (an essentially worthless enantiomer) led to speculation that this
329 importation was used to test a smuggling route into Australia.

330 This survey provided some insight into the synthetic origins of MA seized in Queensland but the
331 geographic origins of these samples remained ambiguous since a large proportion of both precursor
332 chemicals (Eph/PSE) and finished product (MA) are reported to originate in China. It seems
333 unlikely that isotopic analysis can distinguish MA manufactured locally from MA manufactured
334 in China using the same precursor chemicals.

335 Although a large proportion of precursor chemicals available in Mexico are also reported to be
336 sourced in China, the majority of MA is manufactured from P2P. Despite a common origin, in
337 China, it appeared possible to distinguish MA derived from either Eph/PSE or P2P based in
338 isotopic composition.

339 A searchable database created from the combination of $\delta^2\text{H}$ / $\delta^{13}\text{C}$ / $\delta^{15}\text{N}$ measurements from this
340 survey proved valuable in linking seizures from different times and locations within Queensland.
341 Having identified possible links between MA samples, KDE provided an estimate of the LHR that
342 these samples came from the same synthetic batch. The results from this survey showed that a

1
2
3
4
5
6
7
8
9
10
11
12
13
14
15
16
17
18
19
20
21
22
23
24
25
26
27
28
29
30
31
32
33
34
35
36
37
38
39
40
41
42
43
44
45
46
47
48
49
50
51
52
53
54
55
56
57
58
59
60
61
62
63
64
65

343 comparison of Queensland MA seizures with data from Australia border seizures would be
344 unrepresentative.

345

1
2
3
4
5
6
7
8
9
10
11
12
13
14
15
16
17
18
19
20
21
22
23
24
25
26
27
28
29
30
31
32
33
34
35
36
37
38
39
40
41
42
43
44
45
46
47
48
49
50
51
52
53
54
55
56
57
58
59
60
61
62
63
64
65

346 **Acknowledgements**

347 Griffith University, School of Natural Sciences and Queensland Health Forensic and Scientific
348 Services (QHFSS) are thanked for supporting this project and facilitating the student placement
349 for Joe Meikle (QHFSS research projects RSS17-013 and RSS19-004).

350 The following people provided valuable help during this work; Helen Salouros (National
351 Measurement Institute of Australia), Willi A. Brand (Max-Planck-Institute for Biogeochemistry,
352 Germany), Yuko T. Iwata (National Research Institute of Police Science, Japan) and the QHFSS
353 Illicit Drug and Clan Lab Groups (Queensland, Australia).

354

355 **Appendix A. Supplementary data**

356 Supplementary data associated with this article

357 **Appendix B. Programming code**

358 R script used to analyse the data for this article

359

References

- [1] G. Thomas, *This is ecstasy*, Sanctuary, London, 2002.
- [2] Australian Criminal Intelligence Commission, *Illicit Drug Data Report 2016-17*, ACIC, Canberra ACT, 2018, p. 180 pp. <https://www.acic.gov.au/publications/intelligence-products/illicit-drug-data-report-0> (accessed 2 May 2019)
- [3] H. Salouros, *Illicit drug chemical profiling: current and future state*, *Australian Journal of Forensic Sciences* 50(6) (2018) 689-696. <https://doi.org/10.1080/00450618.2018.1424244>
- [4] M. Collins, H. Salouros, *A review of some recent studies on the stable isotope profiling of methylamphetamine: Is it a useful adjunct to conventional chemical profiling?*, *Sci Justice* 55(1) (2015) 2-9. <https://doi.org/10.1016/j.scijus.2014.08.006>
- [5] M. Collins, *Illicit drug profiling: the Australian experience—revisited*, *Australian journal of forensic sciences* 49(6) (2017) 591-604. <https://doi.org/10.1080/00450618.2017.1348009>
- [6] F. Mas, B. Beemsterboer, A. Veltkamp, A. Verweij, *Determination of ‘common-batch’ members in a set of confiscated 3, 4-(methylenedioxy)-methylamphetamine samples by measuring the natural isotope abundances: a preliminary study*, *Forensic Science International* 71(3) (1995) 225-231. [https://doi.org/10.1016/0379-0738\(94\)01670-4](https://doi.org/10.1016/0379-0738(94)01670-4)
- [7] J.F. Carter, E.L. Titterton, M. Murray, R. Sleeman, *Isotopic characterisation of 3,4-methylenedioxyamphetamine and 3,4-methylenedioxymethylamphetamine (ecstasy)*, *Analyst* (Cambridge, U. K.) 127(6) (2002) 830-833. <https://doi.org/10.1039/b201496n>
- [8] F. Palhol, C. Lamoureux, N. Naulet, *¹⁵N isotopic analyses: a powerful tool to establish links between seized 3,4-methylenedioxymethamphetamine (MDMA) tablets*, *Anal. Bioanal. Chem.* 376(4) (2003) 486-490. <https://doi.org/10.1007/s00216-003-1849-6>
- [9] M. Collins, A.T. Cawley, A.C. Heagney, L. Kissane, J. Robertson, H. Salouros, *$\delta^{13}\text{C}$, $\delta^{15}\text{N}$ and $\delta^2\text{H}$ isotope ratio mass spectrometry of ephedrine and pseudoephedrine: application to methylamphetamine profiling*, *Rapid Commun. Mass Spectrom.* 23(13) (2009) 2003-2010. <https://doi.org/10.1002/rcm.4109>
- [10] F. Palhol, C. Lamoureux, M. Chabrilat, N. Naulet, *¹⁵N/¹⁴N isotopic ratio and statistical analysis: an efficient way of linking seized Ecstasy tablets*, *Anal. Chim. Acta* 510(1) (2004) 1-8. <https://doi.org/10.1016/j.aca.2003.12.069>
- [11] J.F. Carter, R. Sleeman, J.C. Hill, F. Idoine, E.L. Titterton, *Isotope ratio mass spectrometry as a tool for forensic investigation (examples from recent studies)*, *Sci. Justice* 45(3) (2005) 141-149. [https://doi.org/10.1016/S1355-0306\(05\)71648-8](https://doi.org/10.1016/S1355-0306(05)71648-8)
- [12] Y.T. Iwata, K. Kuwayama, K. Tsujikawa, H. Miyaguchi, T. Kanamori, H. Inoue, *Evaluation method for linking methamphetamine seizures using stable carbon and nitrogen isotopic compositions: a complementary study with impurity profiling*, *Rapid Commun. Mass Spectrom.* 22(23) (2008) 3816-3822. <https://doi.org/10.1002/rcm.3809>

1
2
3
4 [13] K. Tsujikawa, T. Mikuma, K. Kuwayama, H. Miyaguchi, T. Kanamori, Y.T. Iwata, H. Inoue, Profiling of
5 seized methamphetamine putatively synthesized by reductive amination of 1-phenyl-2-propanone,
6 Forensic Toxicology 30(1) (2012) 70-75. <https://doi.org/10.1007/s11419-011-0119-0>
7

8
9 [14] J.F. Carter, E.L. Titterton, H. Grant, R. Sleeman, Isotopic changes during the synthesis of
10 amphetamines, Chem. Commun. (Cambridge, U. K.) (21) (2002) 2590-2591.
11 <https://doi.org/10.1039/b207775b>
12

13 [15] H.A.S. Buchanan, N.N. Daeid, W.J. Kerr, J.F. Carter, J.C. Hill, Role of Five Synthetic Reaction
14 Conditions on the Stable Isotopic Composition of 3,4-Methylenedioxymethamphetamine, Anal. Chem.
15 (Washington, DC, U. S.) 82(13) (2010) 5484-5489. <https://doi.org/10.1021/ac1002432>
16
17

18 [16] H. Salouros, M. Collins, A. Cawley, M. Longworth, Methylamphetamine synthesis: Does an
19 alteration in synthesis conditions affect the $\delta^{13}\text{C}$, $\delta^{15}\text{N}$ and $\delta^2\text{H}$ stable isotope ratio values of the
20 product?, Drug Test. Anal. 4(5) (2012) 330-336. <https://doi.org/10.1002/dta.321>
21
22

23 [17] N. Kurashima, Y. Makino, S. Sekita, Y. Urano, T. Nagano, Determination of Origin of Ephedrine Used
24 as Precursor for Illicit Methamphetamine by Carbon and Nitrogen Stable Isotope Ratio Analysis, Anal.
25 Chem. 76(14) (2004) 4233-4236. <https://doi.org/10.1021/ac035417c>
26
27

28 [18] Y. Makino, Y. Urano, T. Nagano, Investigation of the origin of ephedrine and methamphetamine by
29 stable isotope ratio mass spectrometry: a Japanese experience, Bull Narc 57(1-2) (2005) 63-78.
30

31 [19] H. Salouros, G.J. Sutton, J. Howes, D.B. Hibbert, M. Collins, Measurement of Stable Isotope Ratios in
32 Methylamphetamine: A Link to Its Precursor Source, Anal. Chem. (Washington, DC, U. S.) 85(19) (2013)
33 9400-9408. <https://doi.org/10.1021/ac402316d>
34

35 [20] A.K. Grzechnik, A.V. George, L. Mitchell, M. Collins, H. Salouros, Enantiomeric resolution of
36 methylamphetamine and ephedrine: Does this affect the $\delta^{13}\text{C}$, $\delta^{15}\text{N}$, and $\delta^2\text{H}$ stable isotope ratios of
37 the product?, Drug Test. Anal. 10(10) (2018) 1543-1553. <https://doi.org/10.1002/dta.2409>
38
39

40 [21] G.E. David, A. Coxon, R.D. Frew, A.R. Hayman, Isotope fractionation during precipitation of
41 methamphetamine HCl and discrimination of seized forensic samples, Forensic Sci. Int. 200(1-3) (2010)
42 123-129. <https://doi.org/10.1016/j.forsciint.2010.03.043>
43
44

45 [22] J.F. Carter, B. Fry, "Do it yourself" reference materials for $\delta^{13}\text{C}$ determinations by isotope ratio
46 mass spectrometry, Anal. Bioanal. Chem. 405(14) (2013) 4959-4962. [https://doi.org/10.1007/s00216-](https://doi.org/10.1007/s00216-013-6851-z)
47 013-6851-z
48

49 [23] J.F. Carter, J.C. Hill, S. Doyle, C. Lock, Results of four inter-laboratory comparisons provided by the
50 Forensic Isotope Ratio Mass Spectrometry (FIRMS) network, Sci. Justice 49(2) (2009) 127-137.
51 <https://doi.org/10.1016/j.scijus.2008.12.002>
52
53

54 [24] LGC, Forensic Isotope Ratio Mass Spectrometry (FIRMS) Network, Round 269 main report, Issue 1,
55 LGC Standards, Lancashire UK, 2018.
56

57 [25] T. McKinnen, Separation and identification of drug enantiomers via N-TFA-(S)- propyl chloride
58 derivatization., Journal of the Clandestine Laboratory Investigating Chemists Association 2(1) (1992).
59
60
61
62
63
64
65

1
2
3
4 [26] M. Gehre, J. Renpenning, T. Gilevska, H. Qi, T.B. Coplen, H.A.J. Meijer, W.A. Brand, A.
5 Schimmelmann, On-Line Hydrogen-Isotope Measurements of Organic Samples Using Elemental
6 Chromium: An Extension for High Temperature Elemental-Analyzer Techniques, *Anal. Chem.*
7 (Washington, DC, U. S.) 87(10) (2015) 5198-5205. <https://doi.org/10.1021/acs.analchem.5b00085>
8
9

10 [27] M. Gehre, J. Renpenning, H. Geilmann, H. Qi, T.B. Coplen, S. Kuemmel, N. Ivdrá, W.A. Brand, A.
11 Schimmelmann, Optimization of on-line hydrogen stable isotope ratio measurements of halogen- and
12 sulfur-bearing organic compounds using elemental analyzer-chromium/high-temperature conversion
13 isotope ratio mass spectrometry (EA-Cr/HTC-IRMS), *Rapid Commun. Mass Spectrom.* 31(6) (2017) 475-
14 484. <https://doi.org/10.1002/rcm.7810>
15
16

17 [28] J. Olsen, I. Seierstad, B. Vinther, S. Johnsen, J. Heinemeier, Memory effect in deuterium analysis by
18 continuous flow isotope ratio measurement, *Int. J. Mass Spectrom.* 254(1-2) (2006) 44-52.
19 <https://doi.org/10.1016/j.ijms.2006.05.004>
20
21

22 [29] N. Ryan, Ice dragon: a proposal to target the supply of methamphetamine from China to Australia,
23 Indo-Pacific Strategic Papers, Australian Defence College, Canberra ACT, 2017.
24 http://www.defence.gov.au/ADC/publications/Indo-Pacific_Strategic_Digest.asp (accessed 1 May 2019)
25

26 [30] Pharmaceutical manufacturing encyclopedia, William Andrew Publishing, Norwich NY, 2007.
27 [https://www.elsevier.com/books/pharmaceutical-manufacturing-encyclopedia/william-andrew-](https://www.elsevier.com/books/pharmaceutical-manufacturing-encyclopedia/william-andrew-pUBLISHING/978-0-8155-1526-5)
28 [publishing/978-0-8155-1526-5](https://www.elsevier.com/books/pharmaceutical-manufacturing-encyclopedia/william-andrew-pUBLISHING/978-0-8155-1526-5) (accessed 9 May 2019)
29
30

31 [31] Y.T. Iwata, K. Kuwayama, K. Tsujikawa, H. Miyaguchi, T. Kanamori, H. Inoue, Seized
32 methamphetamine samples with unique profiles of stable nitrogen isotopic composition documented by
33 stable isotope ratio mass spectrometry, *Forensic Toxicology* 28(2) (2010) 119-123.
34 <https://doi.org/10.1007/s11419-010-0094-x>
35
36

37 [32] S. Schneiders, T. Holdermann, R. Dahlenburg, Comparative analysis of 1-phenyl-2-propanone (P2P),
38 an amphetamine-type stimulant precursor, using stable isotope ratio mass spectrometry Presented in
39 part as a poster at the 2nd meeting of the Joint European Stable Isotope User Meeting (JESIUM), Giens,
40 France, September 2008, *Sci. Justice* 49(2) (2009) 94-101. <https://doi.org/10.1016/j.scijus.2009.03.001>
41
42

43 [33] L.M. Reynard, S.E. Ryan, N. Tuross, The interconversion of $\delta^2\text{H}$ values of collagen between thermal
44 conversion reactor configurations, *Rapid Commun. Mass Spectrom.* 33(7) (2019) 678-682.
45 <https://doi.org/10.1002/rcm.8396>
46

47 [34] J.F. Carter, S. Doyle, B.-L. Phasumane, N. NicDaeid, The role of isotope ratio mass spectrometry as a
48 tool for the comparison of physical evidence, *Sci Justice* 54(5) (2014) 327-34.
49 <https://doi.org/10.1016/j.scijus.2014.06.010>
50
51

52 [35] Association of Forensic Science Providers, Standards for the formulation of evaluative forensic
53 science expert opinion, *Science & Justice* 49(3) (2009) 161-164.
54 <https://doi.org/10.1016/j.scijus.2009.07.004>
55

56 [36] A.L. Booth, M.J. Wooller, T. Howe, N. Haubenstein, Tracing geographic and temporal trafficking
57 patterns for marijuana in Alaska using stable isotopes (C, N, O and H), *Forensic Sci. Int.* 202(1-3) (2010)
58 45-53. <https://doi.org/10.1016/j.forsciint.2010.04.025>
59
60
61
62
63
64
65

1
2
3
4
5
6
7
8
9
10
11
12
13
14
15
16
17
18
19
20
21
22
23
24
25
26
27
28
29
30
31
32
33
34
35
36
37
38
39
40
41
42
43
44
45
46
47
48
49
50
51
52
53
54
55
56
57
58
59
60
61
62
63
64
65

[37] J.R. Ehleringer, J.F. Casale, M.J. Lott, V.L. Ford, Tracing the geographical origin of cocaine, *Nature (London)* 408(6810) (2000) 311-312. <https://doi.org/10.1038/35042680>

[38] J. Casale, E. Casale, M. Collins, D. Morello, S. Cathapermal, S. Panicker, Stable isotope analyses of heroin seized from the merchant vessel Pong Su, *J. Forensic Sci.* 51(3) (2006) 603-606. <https://doi.org/10.1111/j.1556-4029.2006.00123.x>

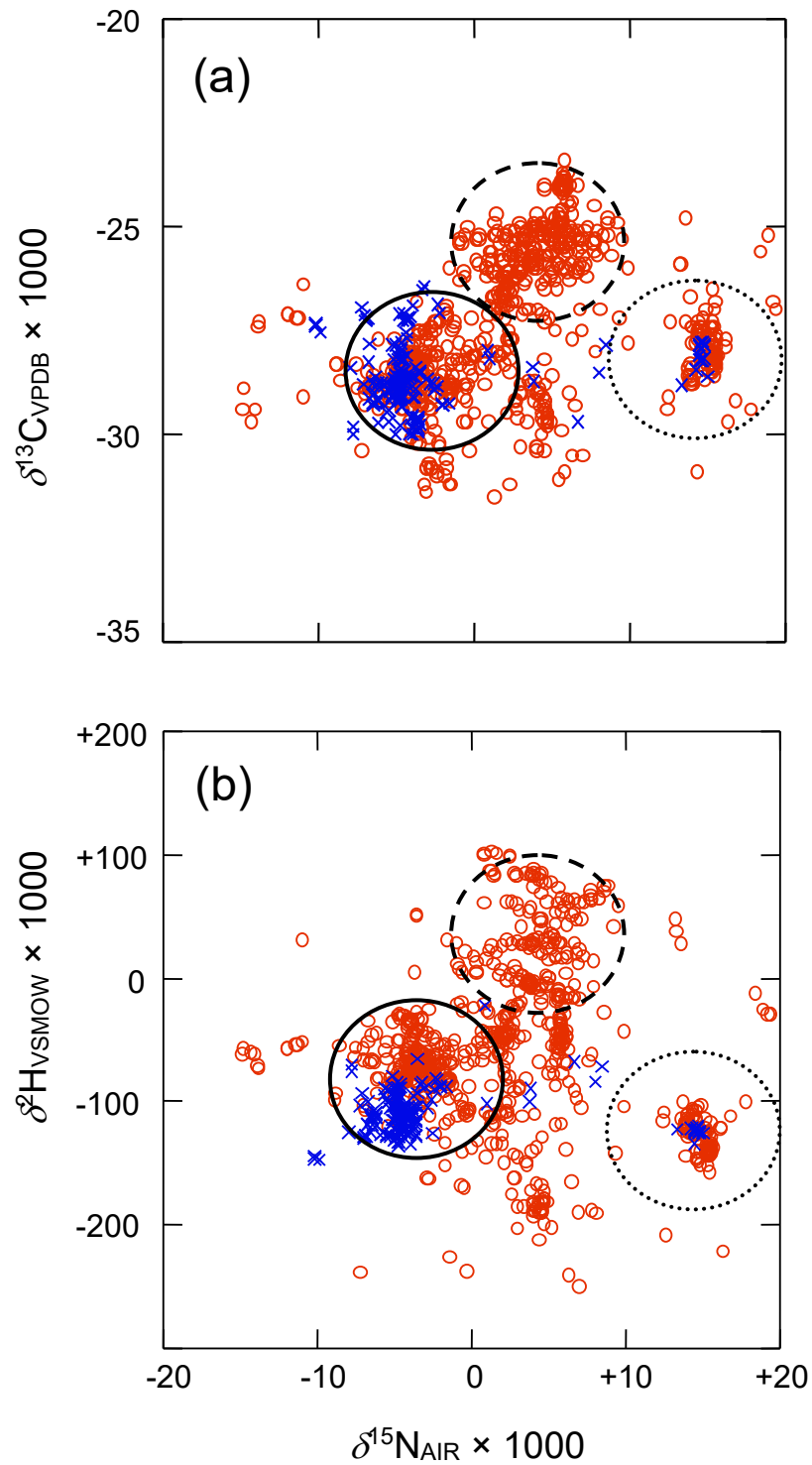


Fig. 1. Scatter plots of MA isotopic composition (a) $\delta^{13}\text{C}$ versus $\delta^{15}\text{N}$ and (b) $\delta^2\text{H}$ versus $\delta^{15}\text{N}$ showing data from NMA/AFP (circle, red) and Queensland (cross, blue). Circles show the proposed origin of the Eph/PSE, synthetic (solid), semi-synthetic (dashed) or natural (dotted). These circles have no statistical significance.

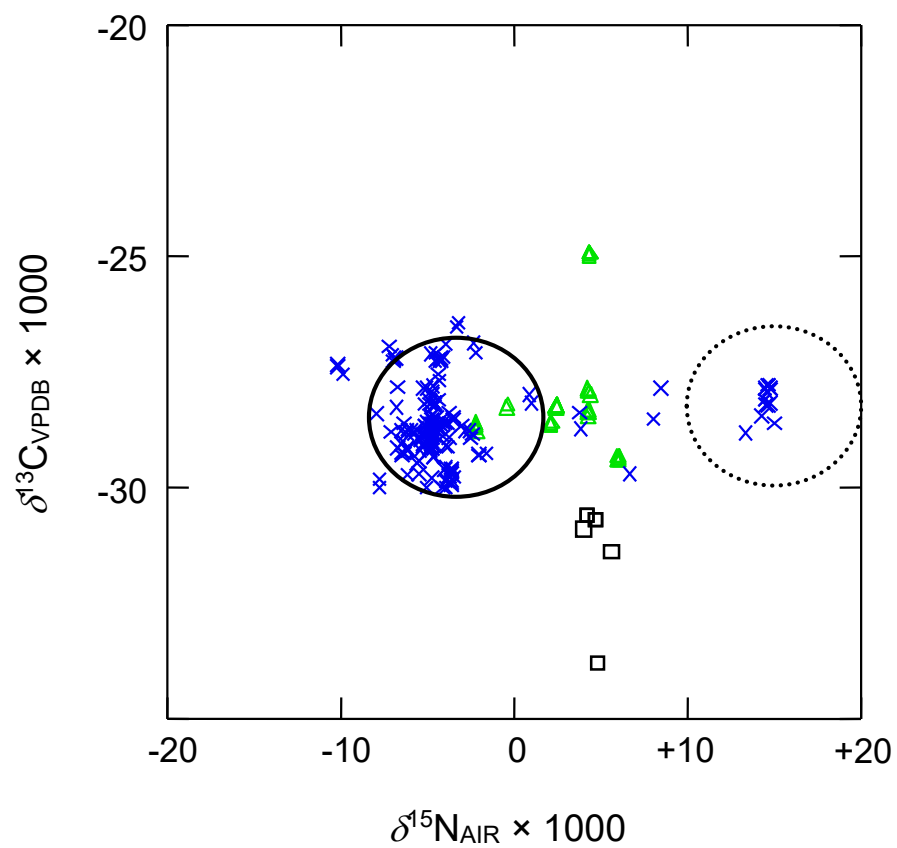


Fig. 2. Scatter plots of MA $\delta^{13}\text{C}$ versus $\delta^{15}\text{N}$ composition, showing data from Queensland (cross, blue) and Japan [Iwata 2008] (triangle, green) [TsujiKawa 2012] (square, black). Circles show the proposed origin of the Eph/PSE precursor, synthetic (solid) or natural (dotted). These circles have no statistical significance.

Figure 3

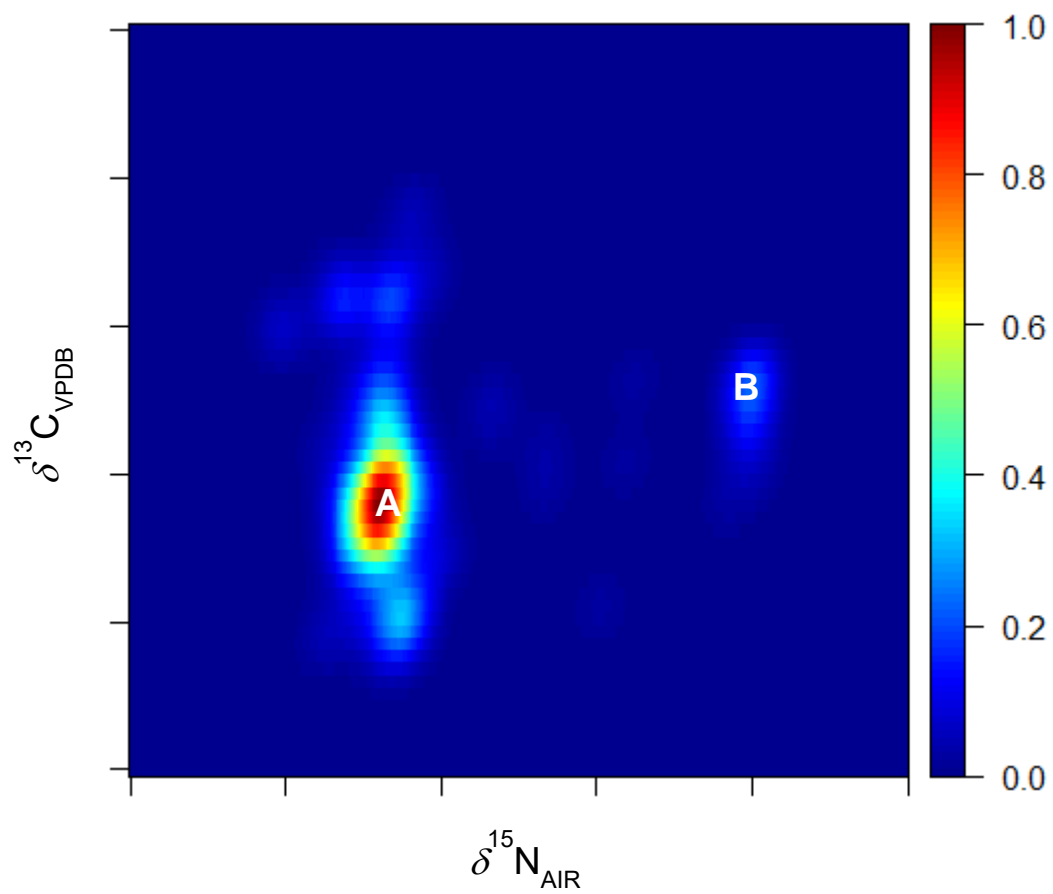


Fig. 3. Image of the kernel density estimate matrix of $\delta^{13}\text{C}$ versus $\delta^{15}\text{N}$ for Queensland MA, showing the probability of a given combination of isotopic compositions (topo.colors).

Figure 4

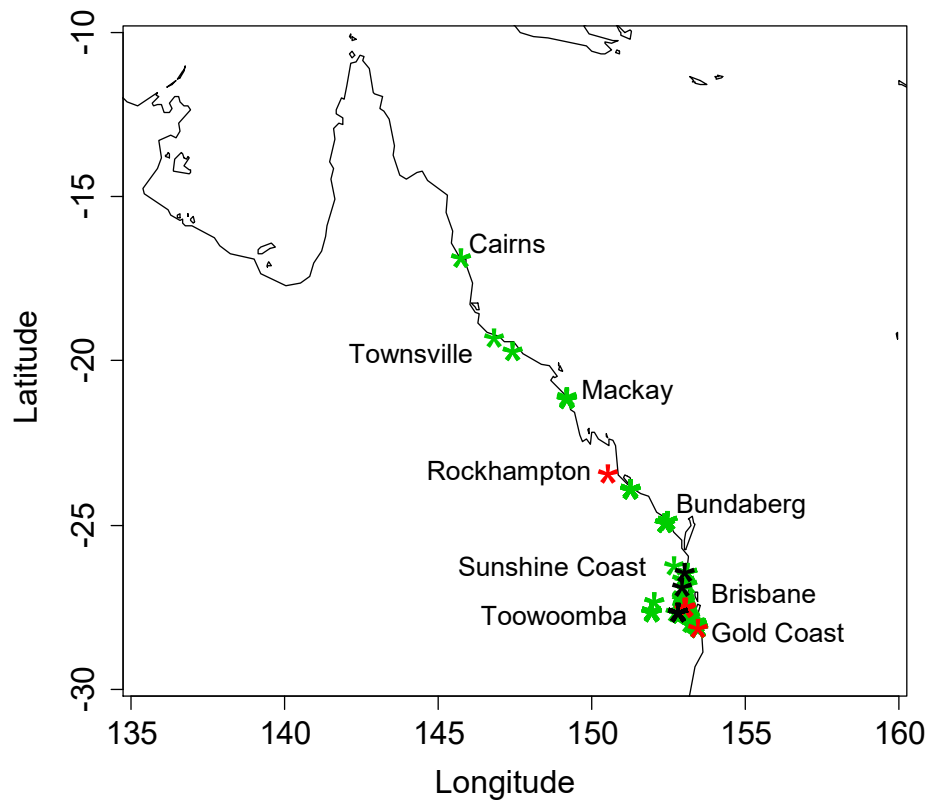


Fig. 4. Spatial plot of Queensland MA seizures showing proposed synthetic precursors (green = synthetic Eph/PSE, red = P2P d-MA and black = P2P I-MA).

AUTHOR DECLARATION

We wish to confirm that there are no known conflicts of interest associated with this publication and there has been no significant financial support for this work that could have influenced its outcome.


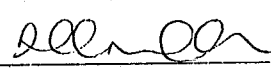
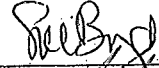
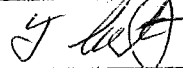

We confirm that the manuscript has been read and approved by all named authors and that there are no other persons who satisfied the criteria for authorship but are not listed. We further confirm that the order of authors listed in the manuscript has been approved by all of us.

We confirm that we have given due consideration to the protection of intellectual property associated with this work and that there are no impediments to publication, including the timing of publication, with respect to intellectual property. In so doing we confirm that we have followed the regulations of our institutions concerning intellectual property.

We further confirm that any aspect of the work covered in this manuscript that has involved either experimental animals or human patients has been conducted with the ethical approval of all relevant bodies and that such approvals are acknowledged within the manuscript.

We understand that the Corresponding Author is the sole contact for the Editorial process (including Editorial Manager and direct communications with the office). He/she is responsible for communicating with the other authors about progress, submissions of revisions and final approval of proofs. We confirm that we have provided a current, correct email address which is accessible by the Corresponding Author and which has been configured to accept email from ForensicChemistry@elsevier.com.

Signed by all authors as follows:


Name	Date	Signature
Joe Meikle	1/06/2019	
Sarah L Cresswell	6/6/2019	
Sue E Boyd	6.6.2019	
James F Carter	6/6/2019	
Simon P Collett	6/6/19	

In case more space is needed, please attach a second page.


< èbî\ ýSupplementaryPlaceholder R ýý Eílé



Click here to access/download
Supplementary Material
Appendix 2.txt



< èbî\ ýSupplementaryPlaceholder R ýý Eïlé



Click here to access/download
Supplementary Material
Appendix 1.xlsx

